

BERNINA V7.0T Update Release Notes

25 November 2015

This document contains notes on the BERNINA V7.0T Update. The Update is intended for installation with any released version (already installed) of BERNINA V7.0 EditorPlus or DesignerPlus.

Contents

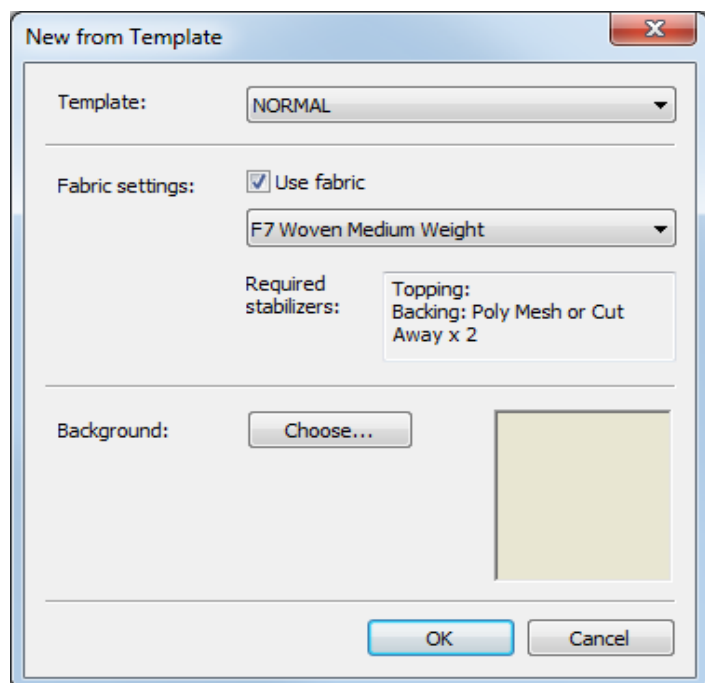
Improvements in BERNINA V7.0T	2
Fabric settings.....	2
Updated fabric settings	3
Backwards compatibility.....	5
Improvements in BERNINA V7.0R	5
Improvements in BERNINA V7.0Q.....	5
New 3D embroidery alphabets	5
Object editing	6
Design opening	7
System behavior	8
Improvements in BERNINA V7.0M.....	9
Graphics & designs.....	9
Stitch quality & effects.....	10
Lettering	13
Embroidery threads.....	14
Hoops.....	15
System improvements	18
BERNINA V7.0 Update installation notes.....	18
Solving problems in BERNINA V7.0.....	18
Getting help	18
Copyright	18
Contact	19

Improvements in BERNINA V7.0T

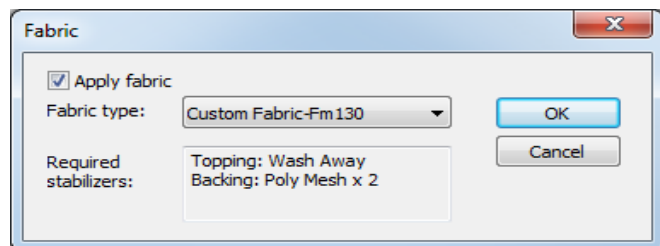
BERNINA V7.0T Update contains improvements to Auto Fabrics settings and includes Windows-10-compatible dongle drivers.

Fabric settings

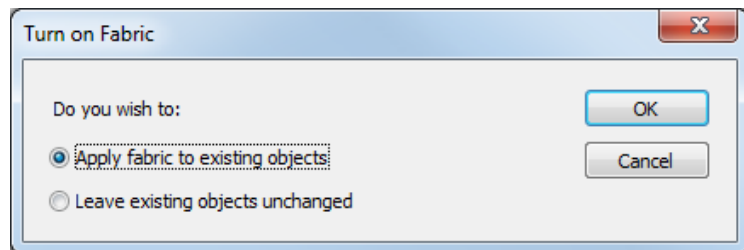
When starting a new design based on the current template, fabric settings are automatically applied. However, there are cases where you may not want this. You now have the choice of turning off the feature altogether.



If you want to turn off fabric settings in an existing design, you can now do so via the Design > Fabric dialog.



If you choose to turn fabric settings on, you are prompted as shown. Settings can be applied to existing objects or newly created objects only.



Updated fabric settings

The table below summarizes the updated settings. All measurements are in millimeters.

Fabric	Step length	Step spacing	Satin auto spacing	Underlay	Layer 1 st. len.	Layer 1 st. spac.	Layer 2 st. len.	Layer 2 st. spac.	Pull comp.
				Type					
F1 Knit Light Weight									
Lettering			92%	Center Walk	2.2				0.25
Narrow Satin			90%	Center Walk + Edge Walk	2.2		2		0.25
Wide Satin			90%	Edge Walk + Zigzag	2		5	3	0.25
Step	4	0.4		Step	3	2			0.2
F2 Knit Medium Weight									
Lettering			92%	Center Walk	2.2				0.25
Narrow Satin			90%	Center Walk + Edge Walk	2.2		2		0.25
Wide Satin			90%	Edge Walk + Zigzag	2		5	3	0.25
Step	4	0.4		Step	4	2.5			0.2
F3 Knit Heavy Weight									
Lettering			92%	Center Walk	2.2				0.35
Narrow Satin			90%	Edge Walk + Zigzag	2		5	3	0.35
Wide Satin			87%	Edge Walk + Double Zigzag	2		12.7	5	0.35
Step	3.8	0.35		Step	4	2.5			0.25
F4 Terry Medium Weight									
Lettering			92%	Center Walk	2.2				0.25
Narrow Satin			90%	Edge Walk + Zigzag	2		5	3	0.25
Wide Satin			90%	Edge Walk + Double Zigzag	2		12.7	5	0.25
Step	4	0.35		Step + Step	4	3.5	4	3.5	0.25
F5 Terry Heavy Weight									
Lettering			92%	Center Walk	2.2				0.25
Narrow Satin			90%	Edge Walk + Zigzag	2		5	3	0.25
Wide Satin			90%	Edge Walk + Double Zigzag	2		12.7	5	0.25
Step	4	0.35		Step + Step	4	3.5	4	3.5	0.25

Fabric	Step length	Step spacing	Satin auto spacing	Underlay	Layer 1 st. len.	Layer 1 st. spac.	Layer 2 st. len.	Layer 2 st. spac.	Pull comp.
				Type					
F6 Woven Light Weight									
Lettering			117%	Center Walk	2.2				0.2
Narrow Satin			108%	Edge Walk	2				0.2
Wide Satin			100%	Edge Walk + Zigzag	2		5	5	0.25
Step	4.2	0.5		Step	4.2	5			0.4
F7 Woven Medium Weight									
Lettering			90%	Center Walk	2				0.2
Narrow Satin			90%	Center Walk	2				0.2
Wide Satin			90%	Edge Walk + Zigzag	2		3.6	2	0.2
Step	4	0.4		Edge Walk + Step	2		3.6	2	0.2
F8 Woven Heavy Weight									
Lettering			98%	Center Walk	2.2				0.2
Narrow Satin			96%	Center Walk + Edge Walk	2.2		2		0.2
Wide Satin			92%	Edge Walk + Double Zigzag	2		12.7	5	0.2
Step	4	0.4		Step	4	2.5			0.17

Backwards compatibility

Note that when opening an ART70 file which has been saved in V7.0T in an older version of V7, this will result in the design loading with fabrics turned on. Should you save the design, fabrics will be re-enabled when loaded in V7.0T.

ART50 files opened in V7.0T will load with auto fabrics turned on and set to custom fabric, if originally created in BERNINA V5.0.

ART60 files opened in V7.0T will load with Auto fabrics off, if originally created in BERNINA V6.

When opening ART V4, ART V3 or ART42 files in V7.0T, fabrics will be turned on and set to custom fabrics.

Sample designs packaged with the product will load with fabrics turned off.

Improvements in BERNINA V7.0R

BERNINA V7.0R Update contains the following fixes and improvements.

3D alphabet connector properties

3D alphabets are not being tied off after every letter according to connector settings. The correct settings are now being applied and tie-offs added.

3D Drummon alphabet

The '3D Drumm' alphabet has been renamed '3D Drummon'. The name of the TrueType Font (TTF) on which this alphabet is based is 'Drummon 3D'.

3D Commonwealth alphabet

The '3D Common Wealth' alphabet has been renamed '3D Commonwealth' in keeping with the name of the corresponding TrueType font, 'Commonwealth 3D Italic'.

Improvements in BERNINA V7.0Q

BERNINA V7.0Q Update contains the following fixes and improvements.

New 3D embroidery alphabets

The V7.0Q Update includes four new 3D embroidery alphabets. These alphabets use satin fill in combination with a foam underlay for a raised '3D' appearance.



- 3D Comica
- 3D Drummon
- 3D Futurism
- 3D Commonwealth

3D alphabets include tie-offs as part of the stitching.

Object editing

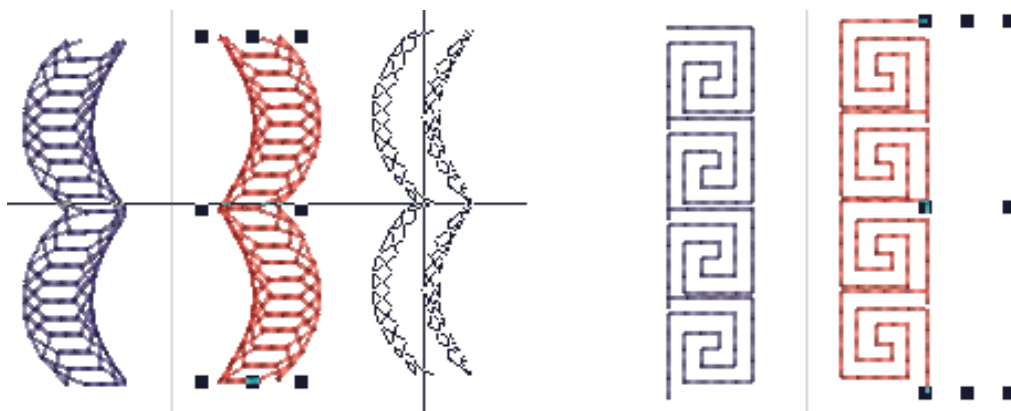
BERNINA V7.0Q Update contains the following object editing fixes and improvements.

Changing outline stitches via Object Properties

Changing outline stitching from Single to Triple, Backstitch, or Stemstitch via Object Properties is not working. Outline objects are not changing stitch type as expected. This issue has been resolved with the V7.0Q Update.

Selection handles and mirrored pattern previews

Pattern run objects are being mirrored incorrectly:

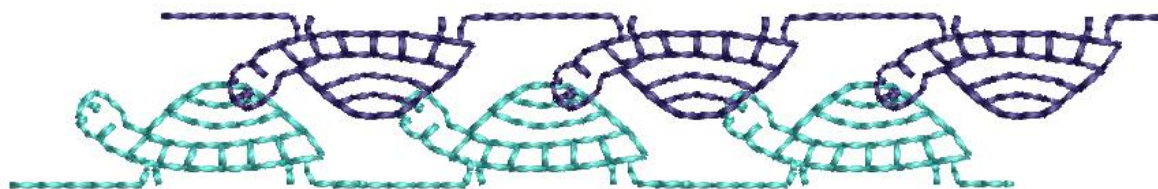


- Selection handles do not appear at the correct position.
- The pattern preview when dragging the object is incorrect – it appears mirrored.

This issue has been resolved.

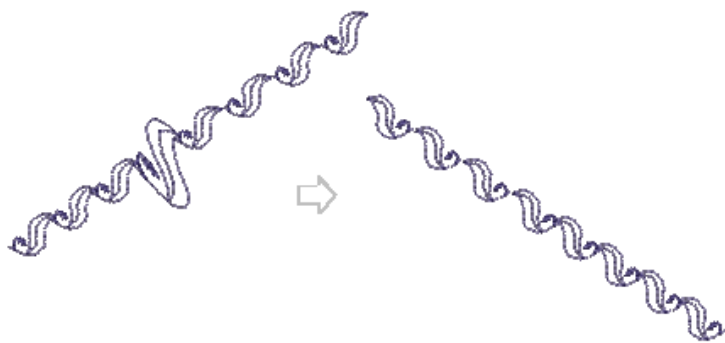
Pattern Run color and orientation

Pattern Run color and orientation change in certain designs when digitizing new objects. This issue has been resolved.



Reshaping when mirroring pattern runs

Individual pattern modifications are lost when mirroring pattern runs. This issue has been resolved.



Reshaping objects with carving stamps

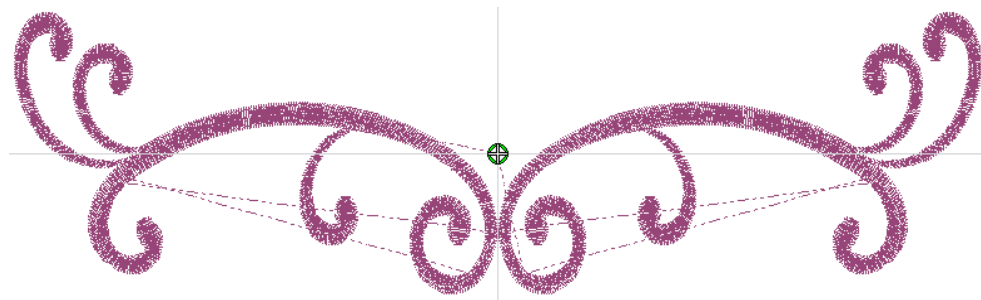
Resizing and reshaping objects with carving stamps has been found to crash the software. This issue has been resolved.

Design opening

BERNINA V7.0Q Update contains the following fixes and improvements to design opening.

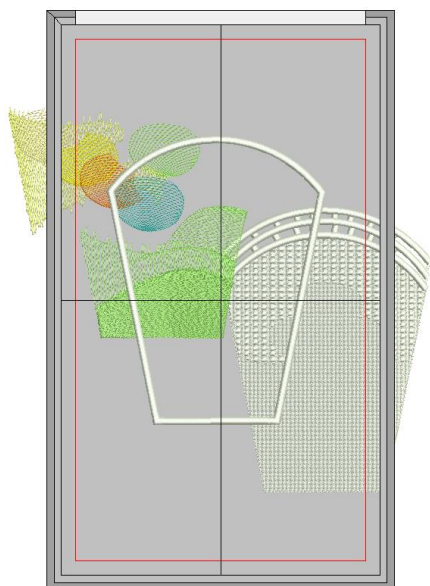
Unexpected jumps

When opening certain designs, the software is introducing unexpected Jumps. This issue has been resolved.



Loading VP3 designs

BERNINA is not loading certain VP3 designs properly. This issue has been resolved.



System behavior

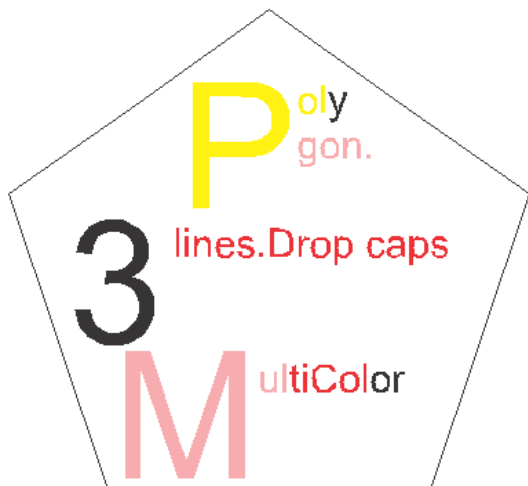
BERNINA V7.0Q Update contains the following system fixes and improvements.

Color Film behavior on closing designs

The **Color Film** is not behaving correctly when closing designs. Even when there are no designs, **Color Film** is displaying objects in the last-closed design. This issue has been resolved.

Converting text frames inside graphic objects

Text frames inside graphic objects are producing unexpected results when converted to embroidery. This issue has been resolved.



Improvements in BERNINA V7.0M

The BERNINA V7.0M Update contains the following fixes and improvements.

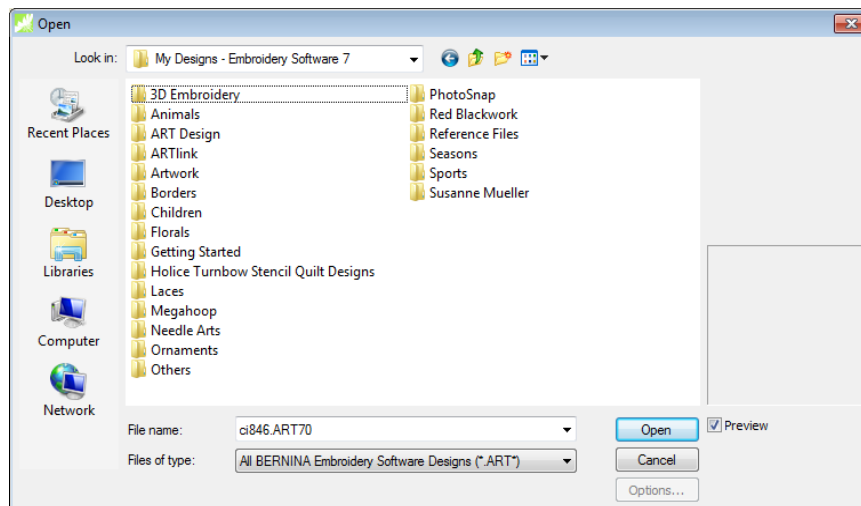
Graphics & designs

Corel graphics saved with ART70 files

Previously, you couldn't load Corel graphics from saved ART70 file containing vector graphics unsupported by BERNINA Embroidery Studio vectors – e.g. Text objects or Gradient Fills. When switching to Artwork Canvas, the Text object was converted to curves and the Gradient Fill was lost. This issue has been resolved with V7.0M Update.

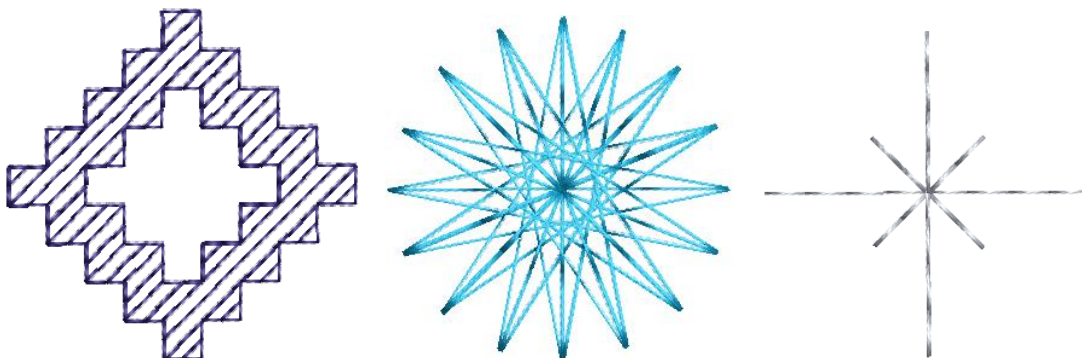
Additional BERNINA sample designs

More sample designs have been added to the BERNINA V7.0M Update. New stock designs appear under 'My Designs'.



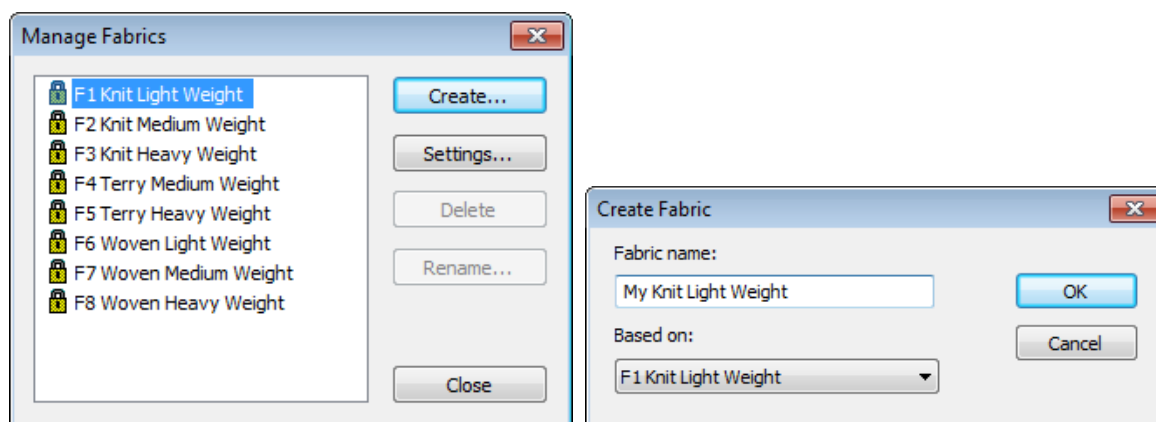
Pattern stamps using Candlewicking, Blackwork, and Lacework

The ability to pattern stamp from Candlewicking, Blackwork, and Lacework has been added to the V7.0M Update.



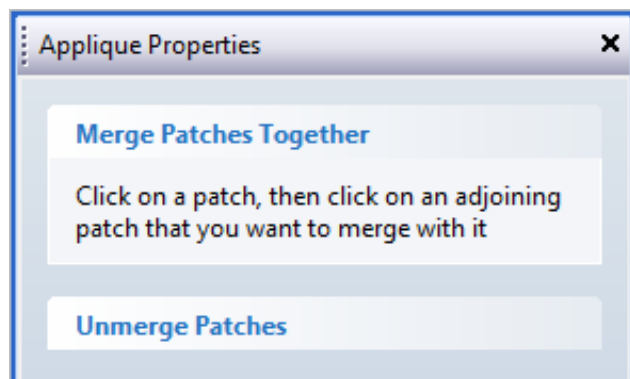
Creating custom auto-fabrics

BERNINA V7 now provides the ability to create custom auto-fabrics.



Merging patches with Advanced Applique

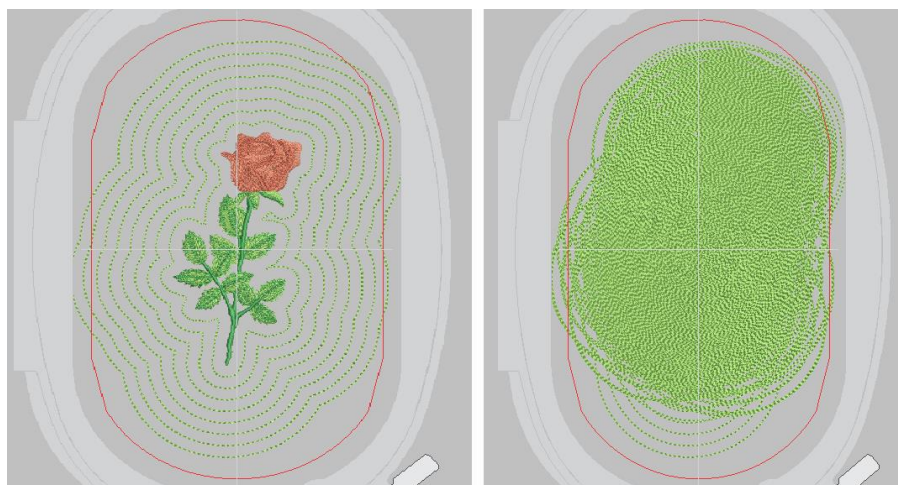
Crashes have been reported when using the **Merge Patches** function with **Advanced Applique**. This issue has been resolved with the V7.0M Update.



Stitch quality & effects

Design outlines with Trapunto

The **Outline Design** feature does not work properly after using 'Create Trapunto Outlines'. The expected result below was generated with an offset 0.25in, outline count 8, outline holes ticked, and outline type triple. The other shows the result after using 'Trapunto Outlines'. This issue has been resolved with V7.0M Update.



Stitch spacing & fabric settings

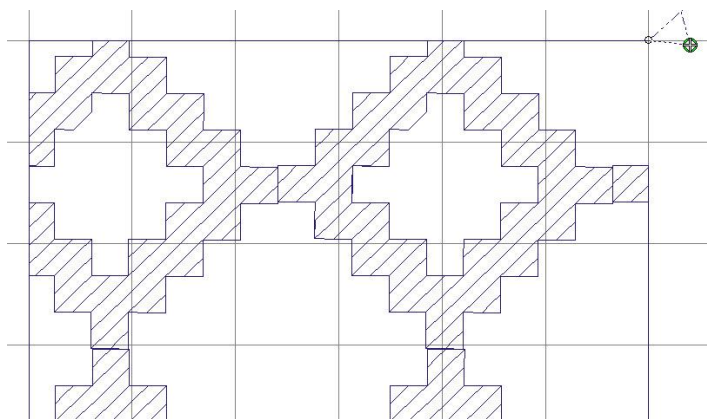
Due to fabric settings, stitch spacing changes when inserting a design via **File > Insert Embroidery**. Open step stitching is lost as the setting goes from 4mm down to .40mm (fabric default). This issue has been resolved: current spacing is no longer lost on inserting designs.

Slant angle of zigzag underlay

The slant angle of zigzag underlay defaults to 30° when opening ART V6 or earlier files in V7. This can cause the underlay to extend outside the boundary. With earlier versions, the slant angle correctly defaults to 90°. This issue has been resolved with V7.0M Update.

Blackwork runs

Blackwork Run sometimes produces unexpected results. For example, the inner point in the below sample is angled instead of pointed like the others. This issue has been resolved with V7.0M Update.

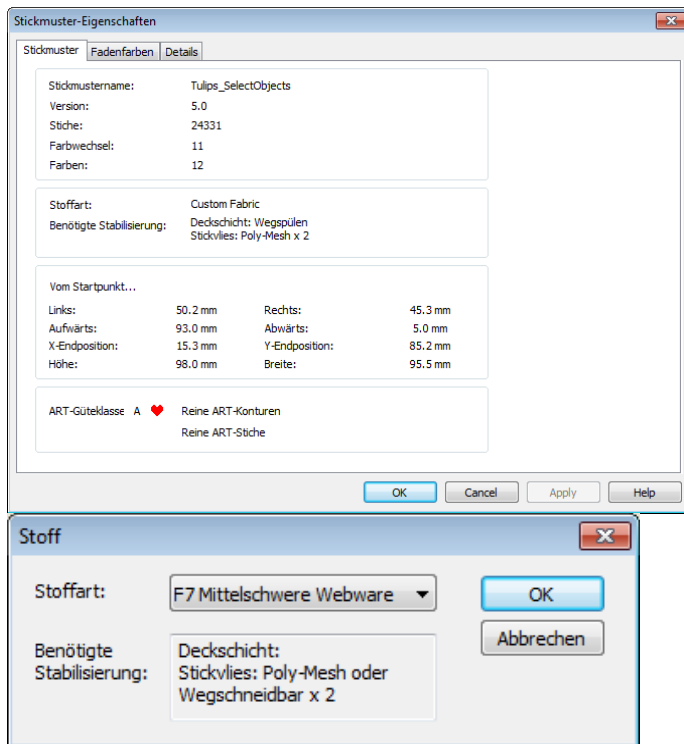


Step stitch spacing limitation

In BERNINA V6, the maximum value for step stitch spacing is 100mm. With V7, stitch spacing was given a hard limit of 12.7mm. Values exceeding the limit default to 0.45mm. However, some embroiderers like to work with Step Fill special effects using larger stitch spacing. For instance, large values are used for creating grid quilting designs. With V7.0M Update, the limitation has been removed.

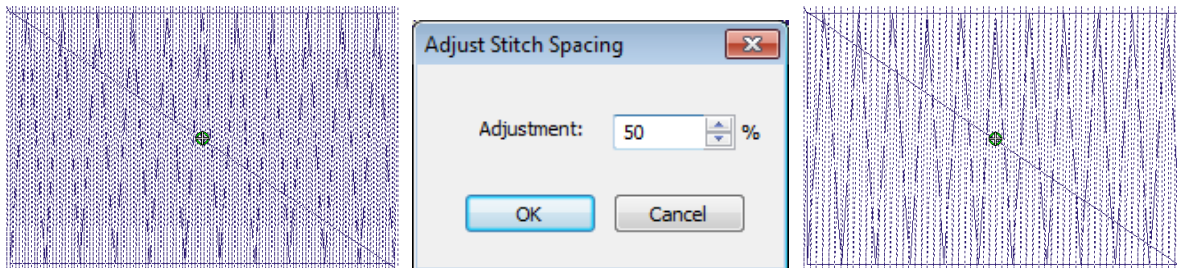
Topping and backing information

Topping & Backing information appears in English in the German **Design Properties** and **Fabric** dialogs. This issue has been resolved with the V7.0M Update.



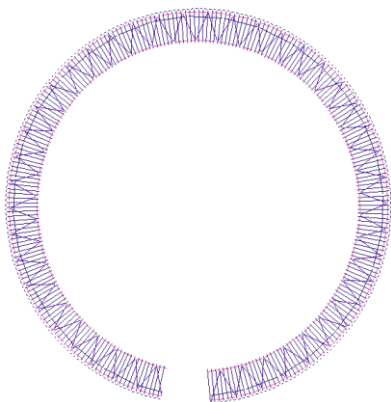
Changing stitch spacing by percentage

BERNINA V7 now provides the ability to change stitch spacing for specific stitch types by a percentage.



Pull compensation with StumpWork borders

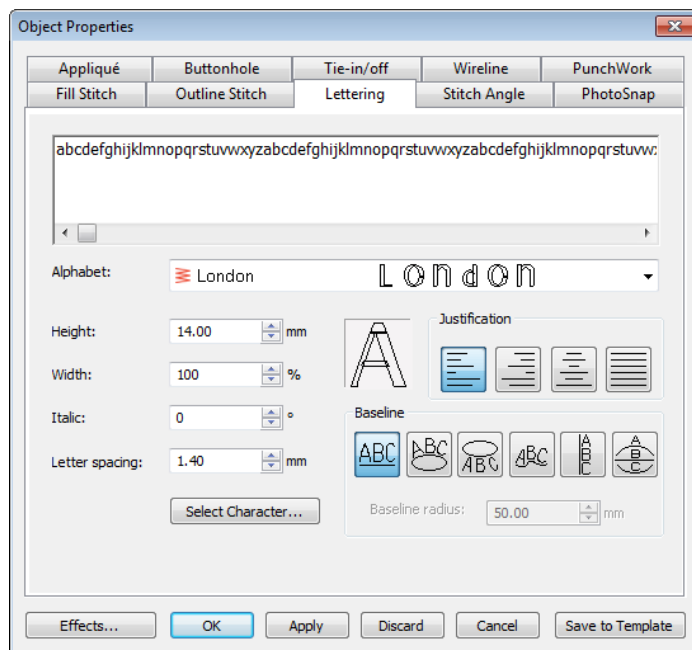
Pull Compensation is not applied by default to StumpWork Border with Wireline or Satin or Blanket embroidery. This issue has been resolved with the V7.0M Update.



Lettering

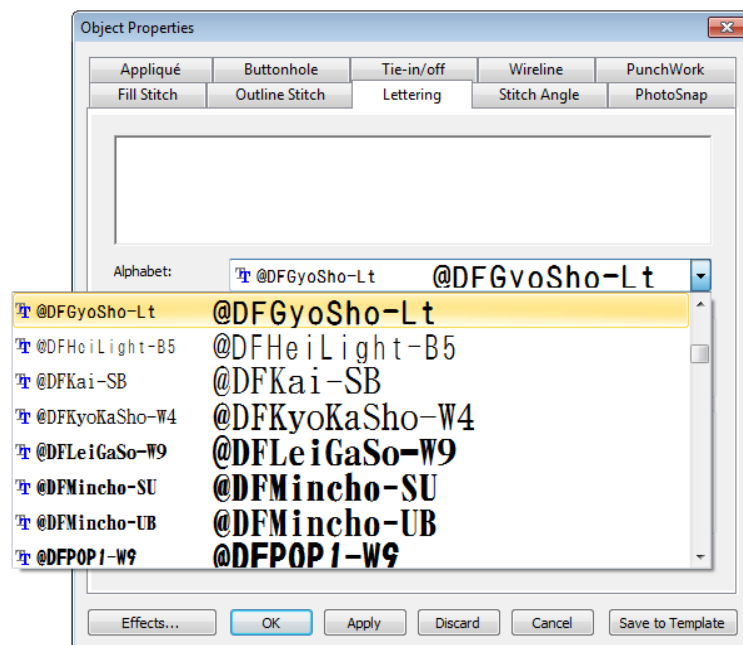
Number of characters enterable in the Lettering dialog

The **Lettering** dialog now allows a greater number of characters to be entered.



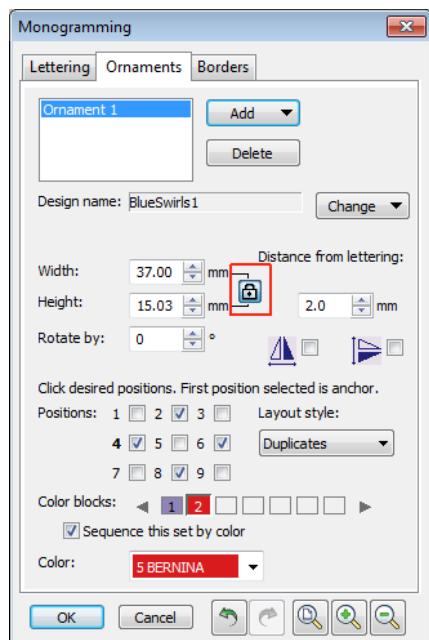
Lettering dialog crashes with large numbers of TTF fonts

Lettering dialog crashes have been reported where there are large numbers of TrueType fonts (more than 2500 TTF fonts) installed on the system. This issue has been resolved with the V7.0M Update.



Lock aspect ratio with monogram ornaments

The **Lock Aspect Ratio** function is not producing expected results for monogram ornaments. This is due to the fact that design size is limited to a maximum of 100mm in the **Ornaments** tab in X or Y directions. The 100mm limitation in sizing has been removed.



Embroidery threads

Timeless thread chart

The **Timeless** thread chart has been added to the BERNINA V7.0M Update.

Thread chart: Timeless Print... Create/Modify...

Code	Brand	Description
10100	Timeless	Pale Pink
10101	Timeless	Rose Quartz
10103	Timeless	Petal Pink
10106	Timeless	Carnation Pink

Search: ☒ Code ☐ Description

Match Assign Match & Assign All

Updated Isacord 40 thread chart

An updated Isacord 40 thread chart has been added to the BERNINA V7.0M Update. The new Isacord chart includes corrected RGB values.

Thread chart: Madeira 40 Print... Create/Modify...

Code	Brand	Description
1000	Madeira 40	Black
1001	Madeira 40	Chrome
1002	Madeira 40	Steel Gray
1003	Madeira 40	Silver Gray

Search: ☒ Code ☐ Description

Match Assign Match & Assign All

New Floriani thread chart

A new **Floriani** thread chart has been added to the V7.0M Update.

Thread chart: Floriani Print... Create/Modify...

Code	Brand	Description
700	Floriani	Mars Red
1514	Floriani	Light Bronze
702	Floriani	Fire Engine Red
703	Floriani	Ruby Red

Search: ☒ Code ☐ Description

Match Assign Match & Assign All

Hoops

Updated hoop names and display order

The order of hoops as displayed in the product has changed to better accommodate existing and new hoops. The default hoop is 'BERNINA Large Oval Hoop, 255 x 145, #26 (template violet)', (previously the 'artista 255 x 145 Oval' hoop).

Legacy hoops: Any hoop not explicitly named in the list is considered 'legacy' – this includes hoops 'w/X-Y lines' and 'w/Grid'. Such hoops are longer shown in the list, except when opening old designs, and cannot be chosen for a new design. Opening an old design with a legacy hoop will generally show the old hoop name in the list, and show the hoop itself as it was in V6.

To make sure longer names can be properly accommodated, the droplist has been widened as shown:

Hoop

☒ Show hoop

Current hoop: BERNINA B830 Jumbo 237 x 373 #44C

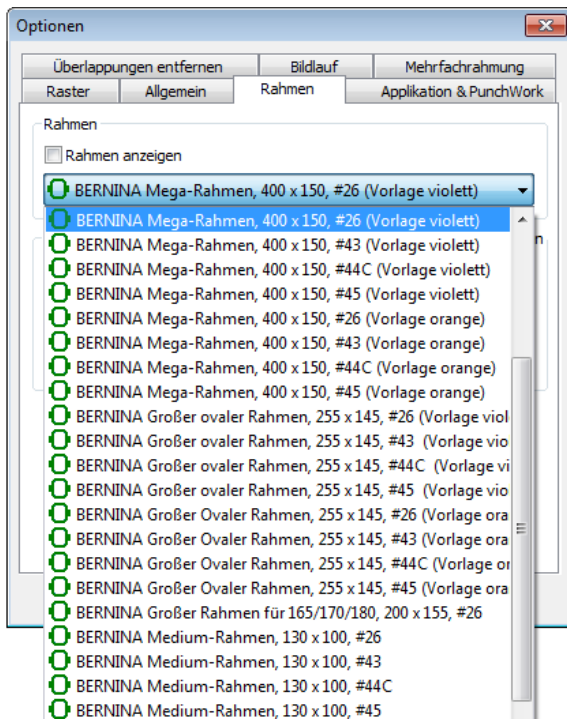
↓

Hoop

☒ Show hoop:

BERNINA Large Oval Hoop, 255 x 145, #26 (template violet)

Hoop names sometimes get truncated when switched to German. The widened droplist accommodates most names now.

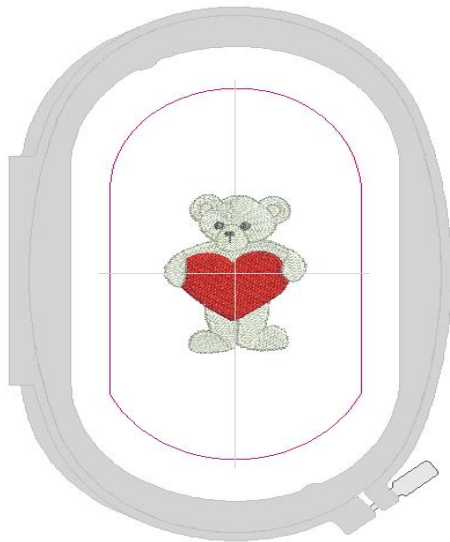


New embroidery areas for existing hoops

BERNINA has revised some embroidery areas of existing hoops due to machine issues. Different embroidery areas have also been added to some older hoops in order to deal with different foot sizes that result.

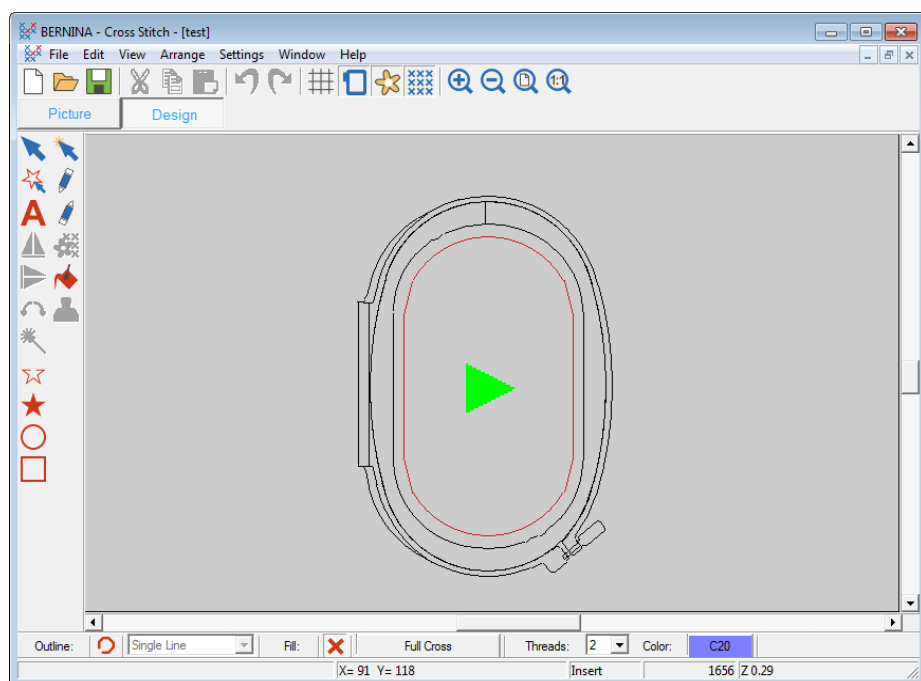
X-Y line hoops

All BERNINA hoops in V7 automatically show X-Y lines, so the distinction between 'hoop' and 'hoop w/X-Y lines' is now irrelevant. When loading the old designs containing hoops w/X-Y lines – e.g. 'artista 255 x 145 Oval w/X-Y lines' – the hoop is changed to corresponding 'normal' hoop – 'artista 255 x 145 Oval' – or its renamed equivalent. X-Y lines are shown anyway.



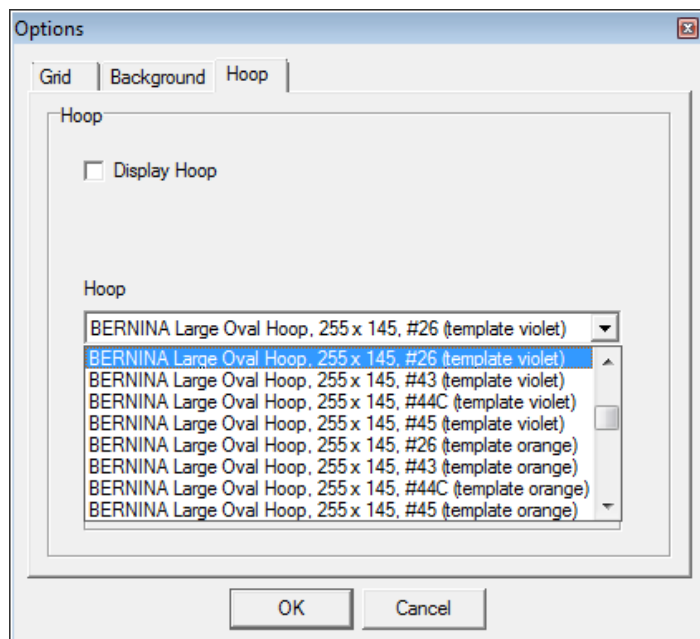
Cross stitch default hoop

The default hoop in **Cross Stitch** is incorrect and not correctly centered. This issue has been resolved with the V7.0M Update.



Hoop names in Cross Stitch

Hoop names appear truncated in **Cross Stitch**. This issue has been resolved with the V7.0M Update.



Default hoop selection

A hoop is not selected by default after installing BES V7.0M Update, preventing the software from saving the design or sending it to machine. This issue has been resolved with the V7.0M Update.

System improvements

Sending designs to Machine/Card

Problems have been reported when sending some designs via **Write to Machine/Card**. Specifically, the error message 'Failed to load XML string' appears and the design does not get saved to external media. This issue has been resolved with V7.0M Update.

V7 EditorPlus to V7 DesignerPlus upgrade

The process by which customers order access codes for a V7 EditorPlus to V7 DesignerPlus upgrade, has caused some confusion. The order form and process have been streamlined for easier use.

Updated German resource strings

Updated German resource strings are included in the V7.0M Update.

Loading XML strings when sending designs to machine

Problems when sending some designs to machine have been reported in regards to the correct loading of XML strings. This issue has been resolved with the V7.0M Update.

BERNINA V7.0 Update installation notes

The BERNINA V7.0 Update installation program is designed for Web distribution. Installation is fully automated. If you have any problems with the installation, please contact your BERNINA dealer.

Solving problems in BERNINA V7.0

If you encounter a problem, refer to the following sources for help:

- BERNINA V7.0 Reference Manual - select Help > Reference Manual
- BERNINA V7.0 Online Help - select Help > Help Topics
- Windows Online Help - select Start > Help
- Windows manual
- Documentation supplied with your hardware.

Getting help

If you are unable to solve a problem, you should contact your BERNINA Dealer. Before seeking help, check that your PC meets the system requirements, and check the Troubleshooting chapter of the Online Manual.

Copyright

Copyright 1997-2015 by Wilcom Pty Ltd, Wilcom International Pty Ltd. All rights reserved.

No parts of this publication or the accompanying software may be copied or distributed, transmitted, transcribed, stored in a retrieval system or translated into any human or computer language, in any form or by any means, electronic, mechanical, magnetic, manual, or otherwise, or disclosed to any third party without the express written permission of:

Wilcom Pty Ltd. (A.B.N. 62 062 621 943)
Level 3, 1-9 Glebe Point Rd, Glebe
Sydney, New South Wales, 2037, Australia
PO Box 1094 Broadway NSW 2007

Phone: +61 2 9578 5100
Fax: +61 2 9578 5108
Web: <http://www.wilcom.com>

Portions of the imaging technology of this product are copyrighted by AccuSoft Corporation. The EPS File Import/Export Converter used in this product is copyrighted by Access Softek, Inc.

Contact

If you have any questions, please contact your BERNINA Dealer, distributor, or BERNINA International AG CH-8266 Steckborn/Switzerland.

Tel: (41) 52-762 11 11
Fax: (41) 52-762 16 11
Web: www.bernina.com