

1

Schnittmuster ohne Größenanpassung, d.h. in tatsächlicher Größe, ausdrucken.

Größe anhand des Kontrollquadrates auf Seite 7 kontrollieren.

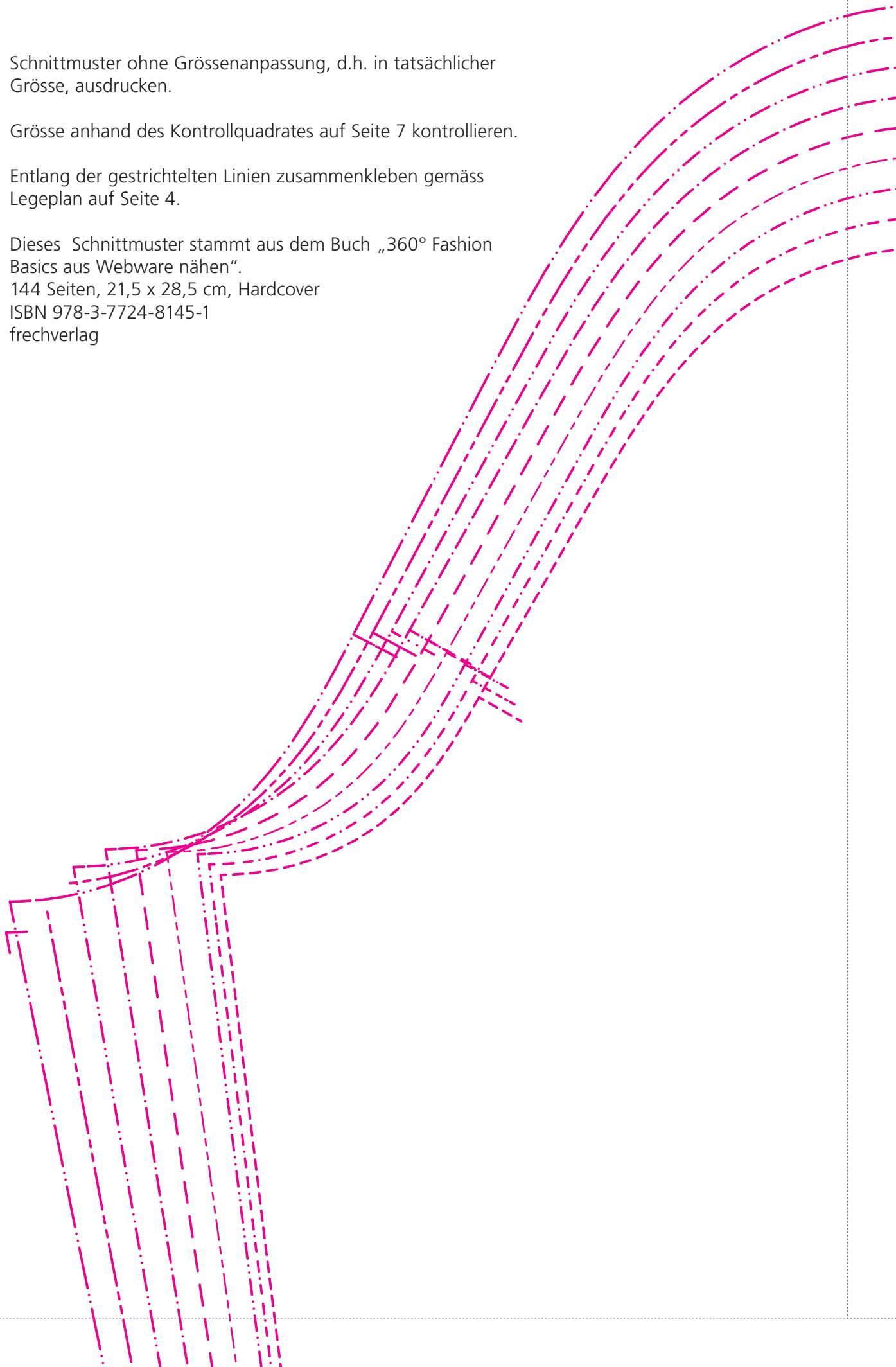
Entlang der gestrichelten Linien zusammenkleben gemäß Legeplan auf Seite 4.

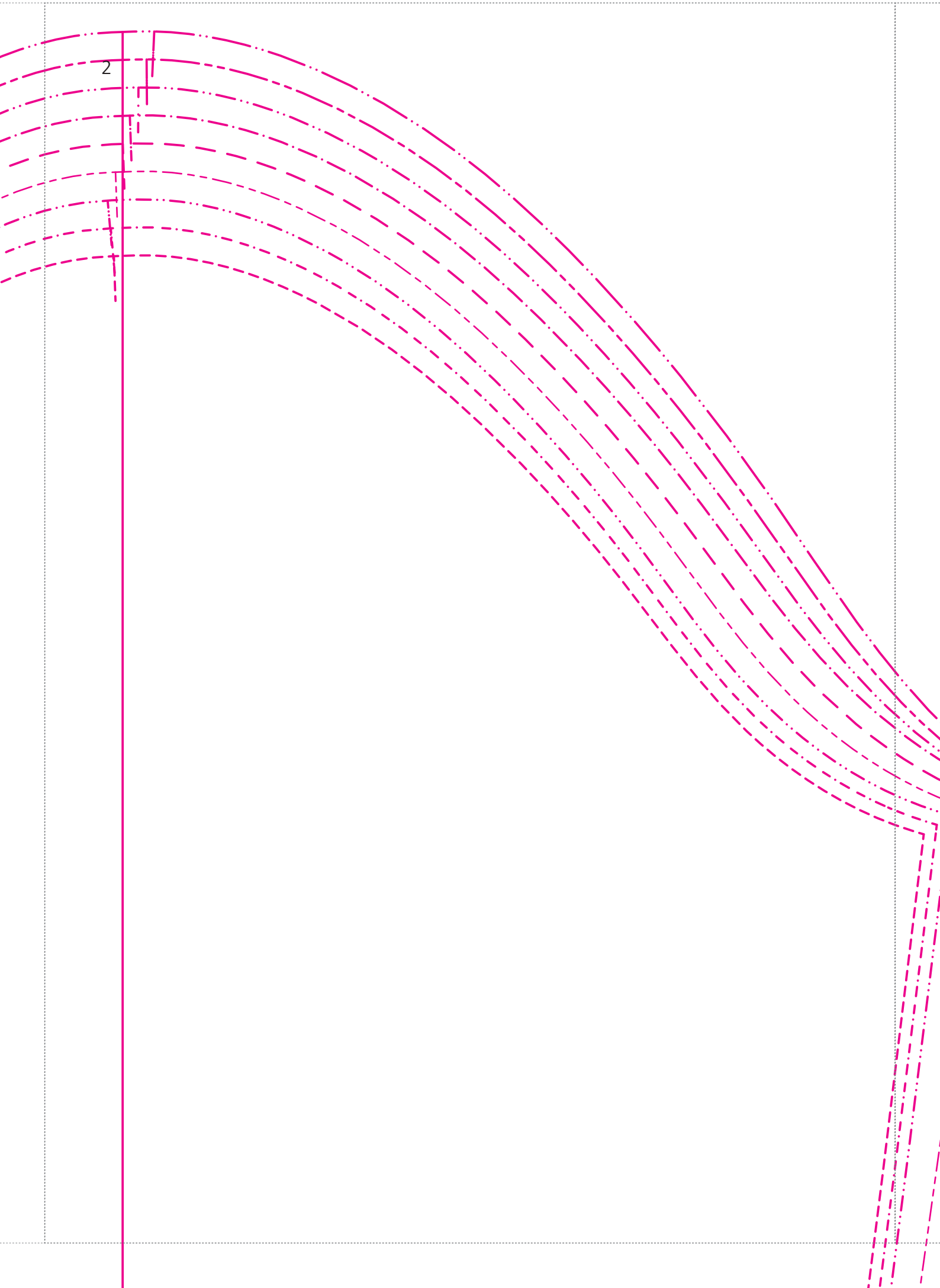
Dieses Schnittmuster stammt aus dem Buch „360° Fashion Basics aus Webware nähen“.

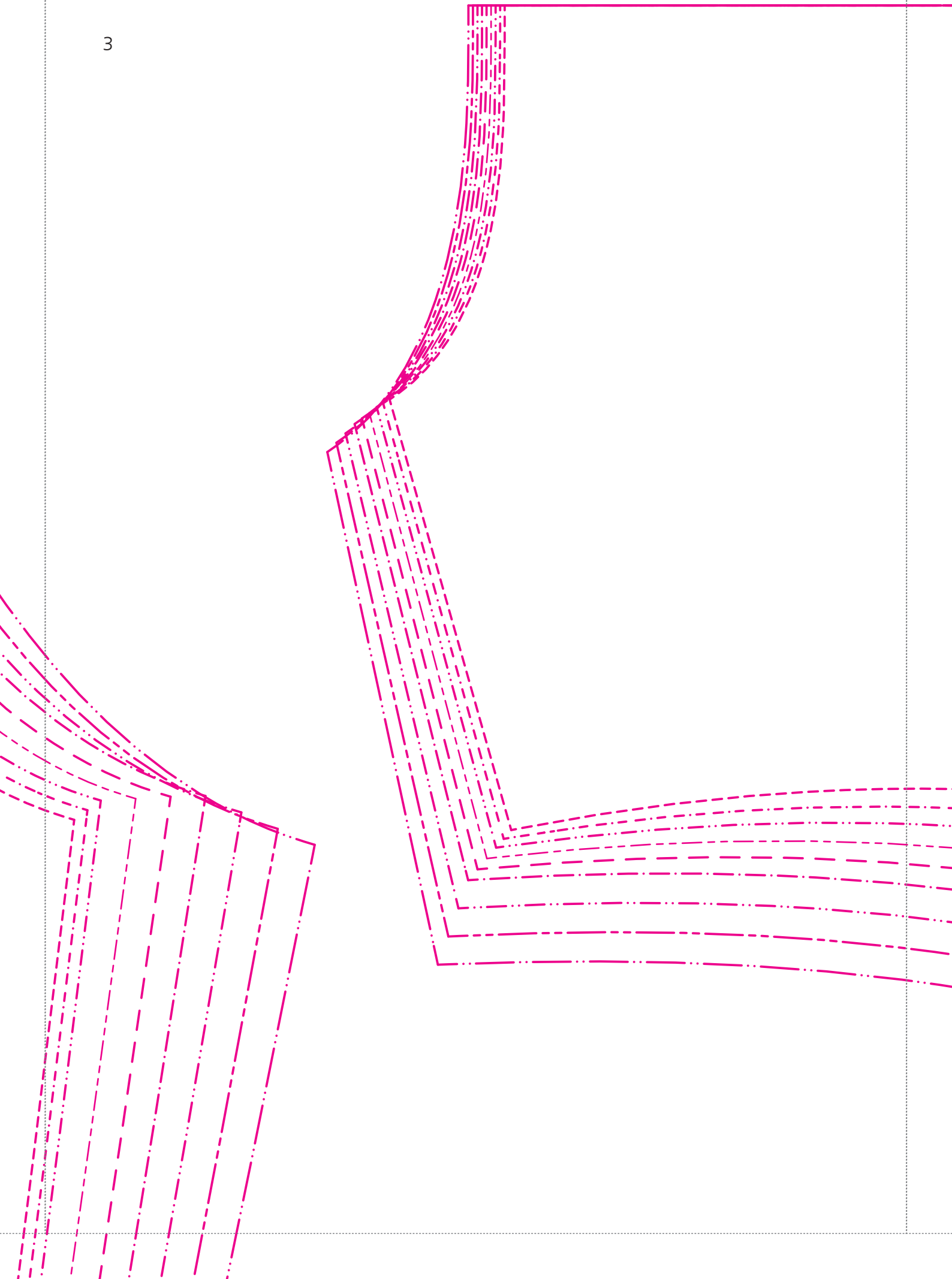
144 Seiten, 21,5 x 28,5 cm, Hardcover

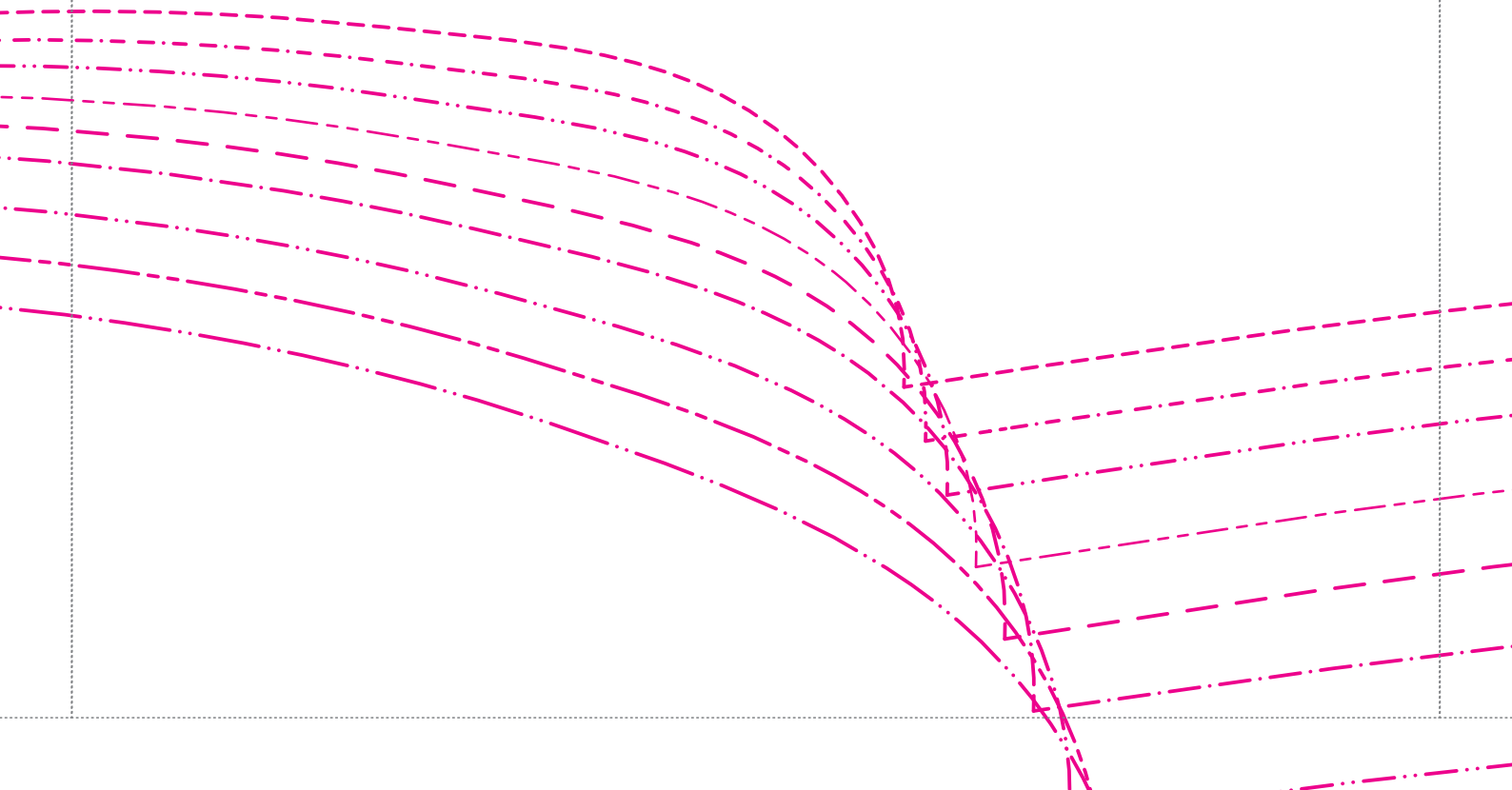
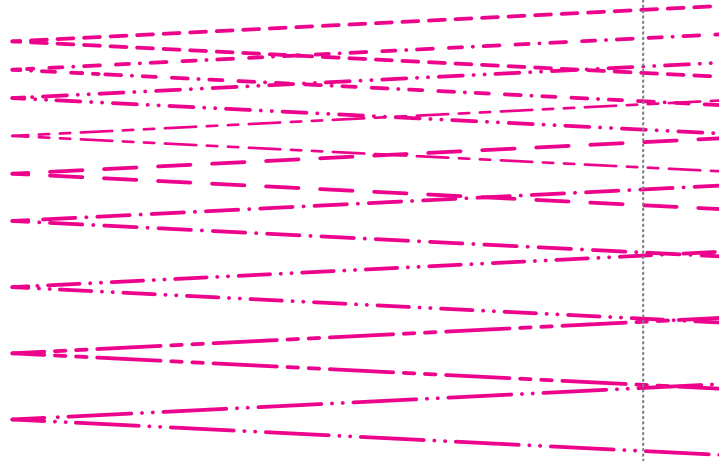
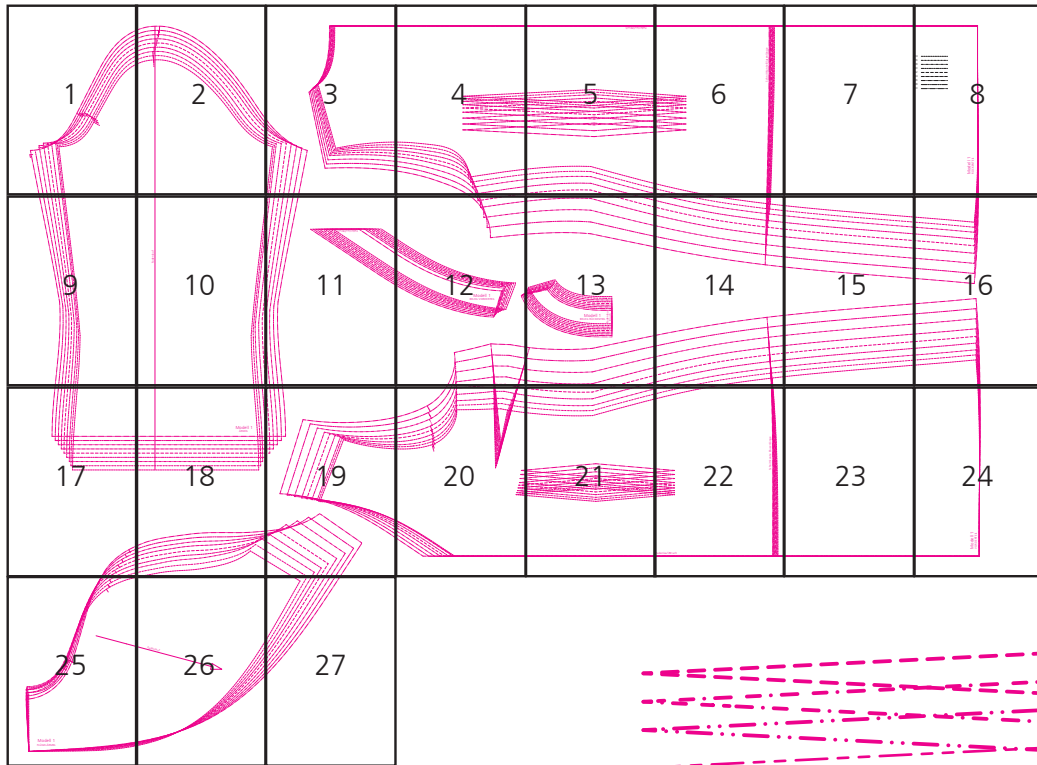
ISBN 978-3-7724-8145-1

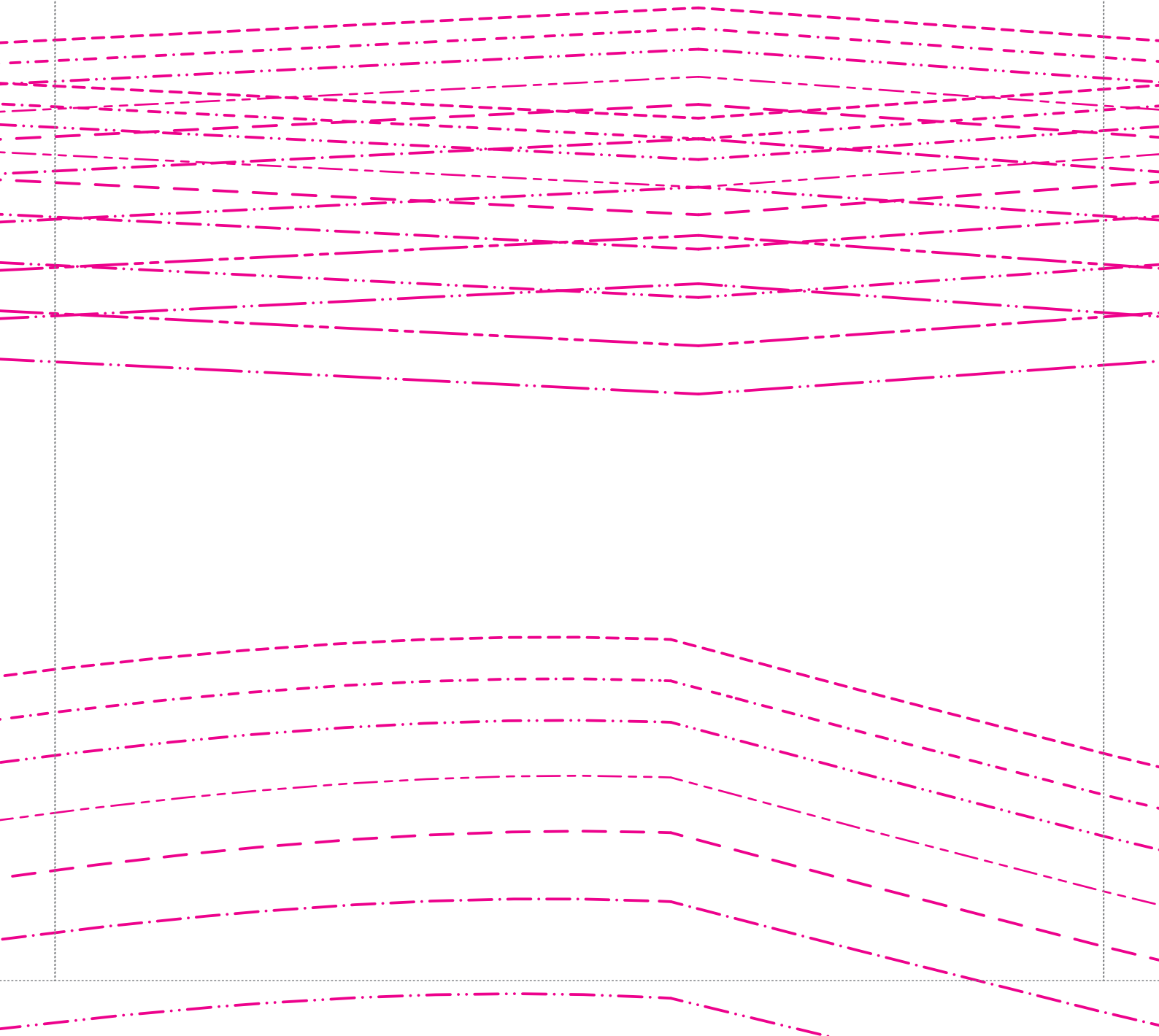
frechverlag

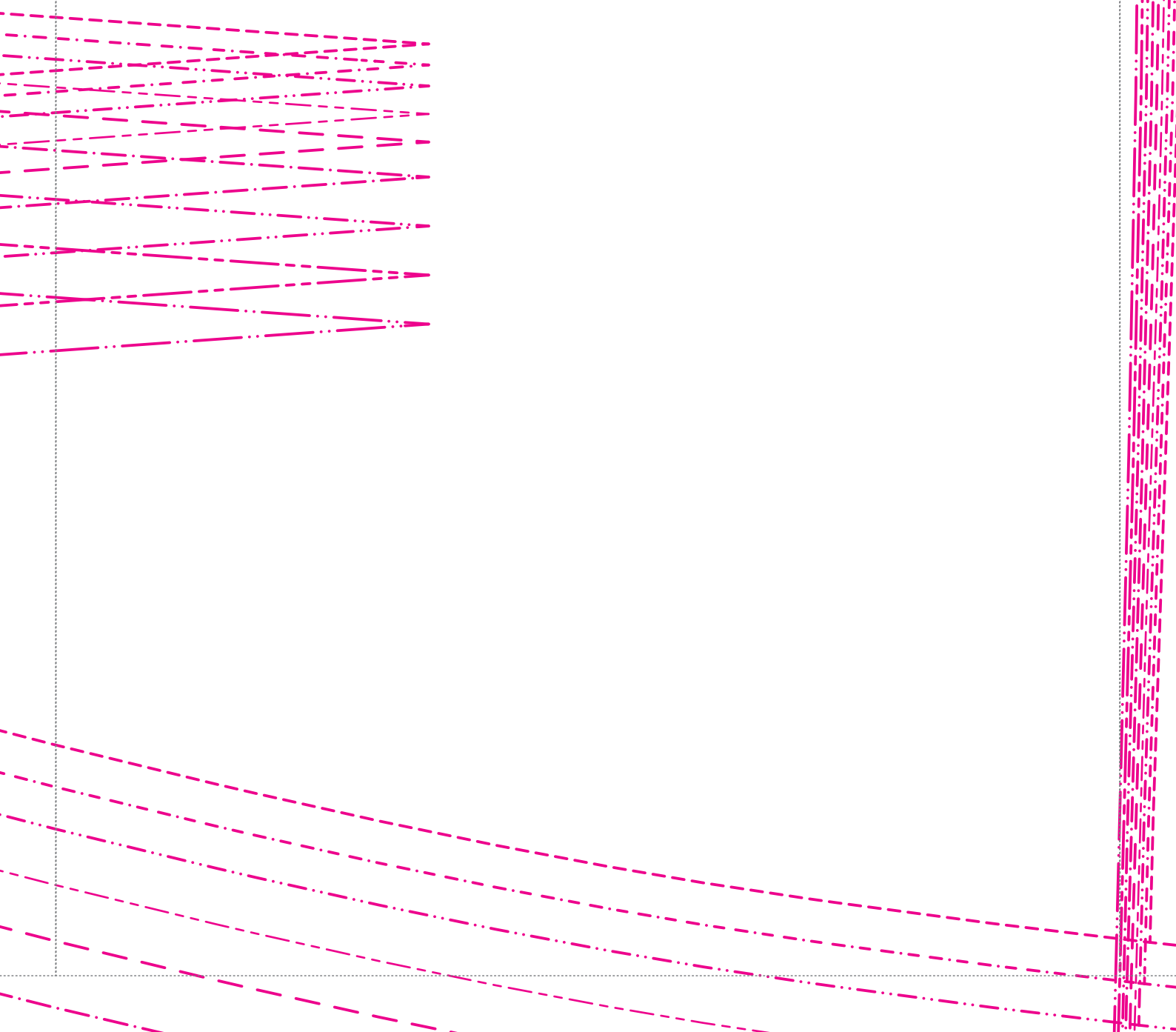










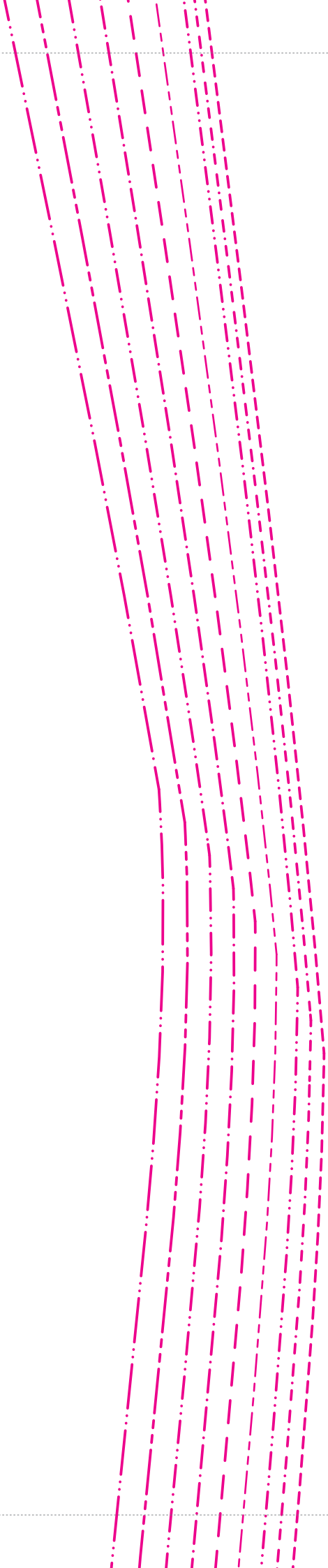


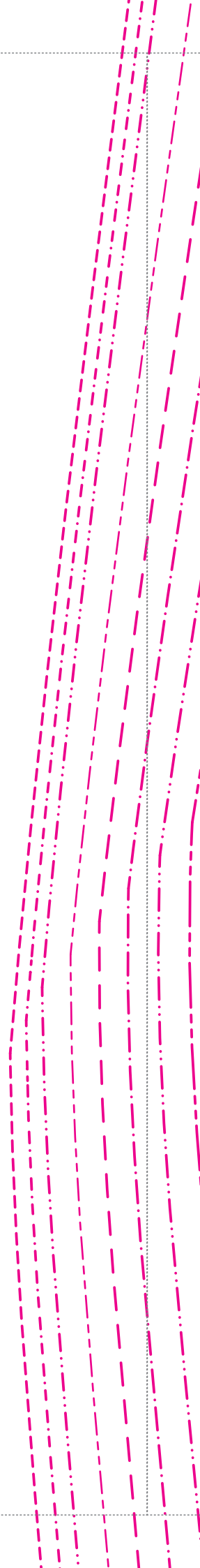
Schnittkante Blusenlänge

7

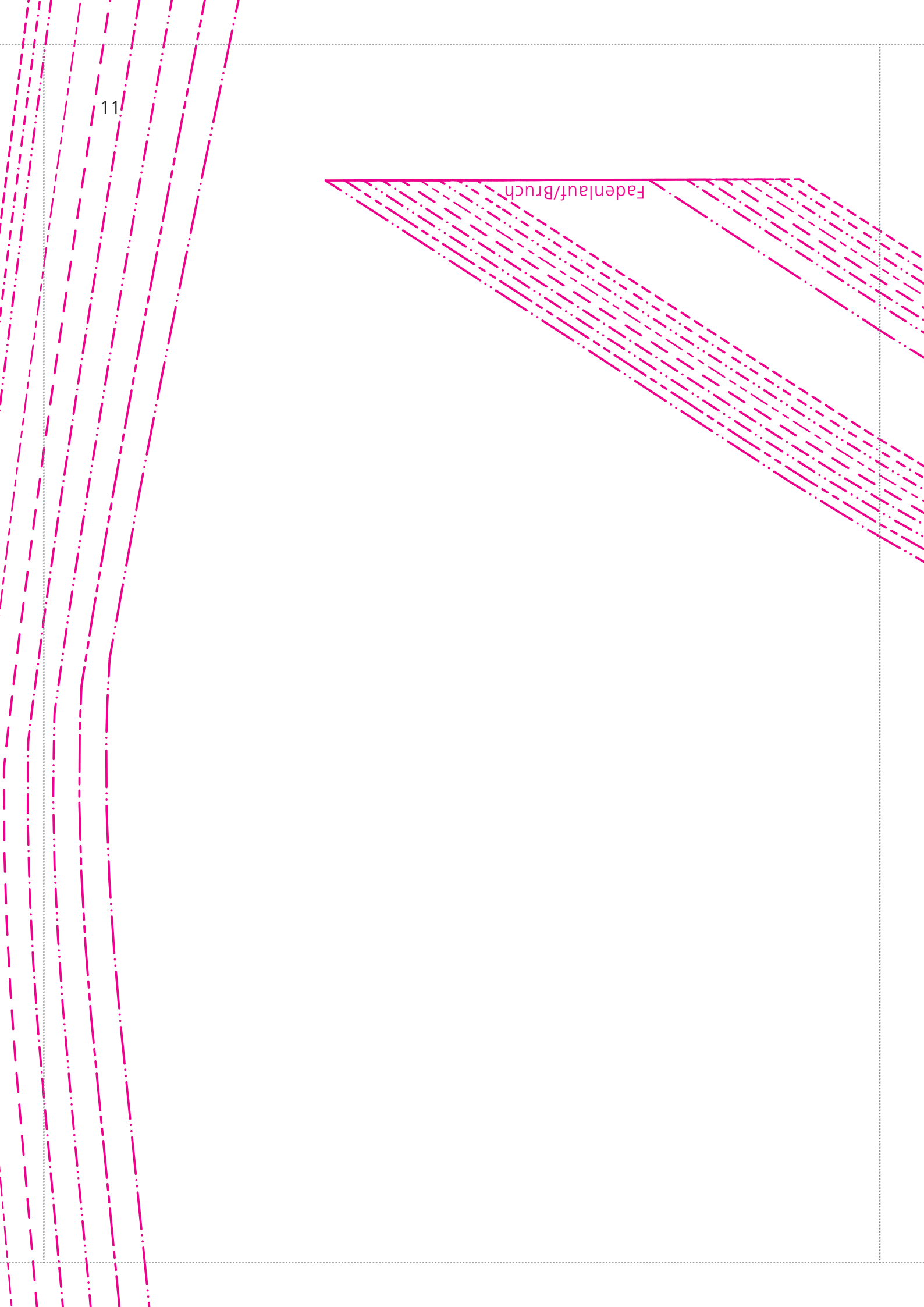
Kontrollquadrat
10x10 cm

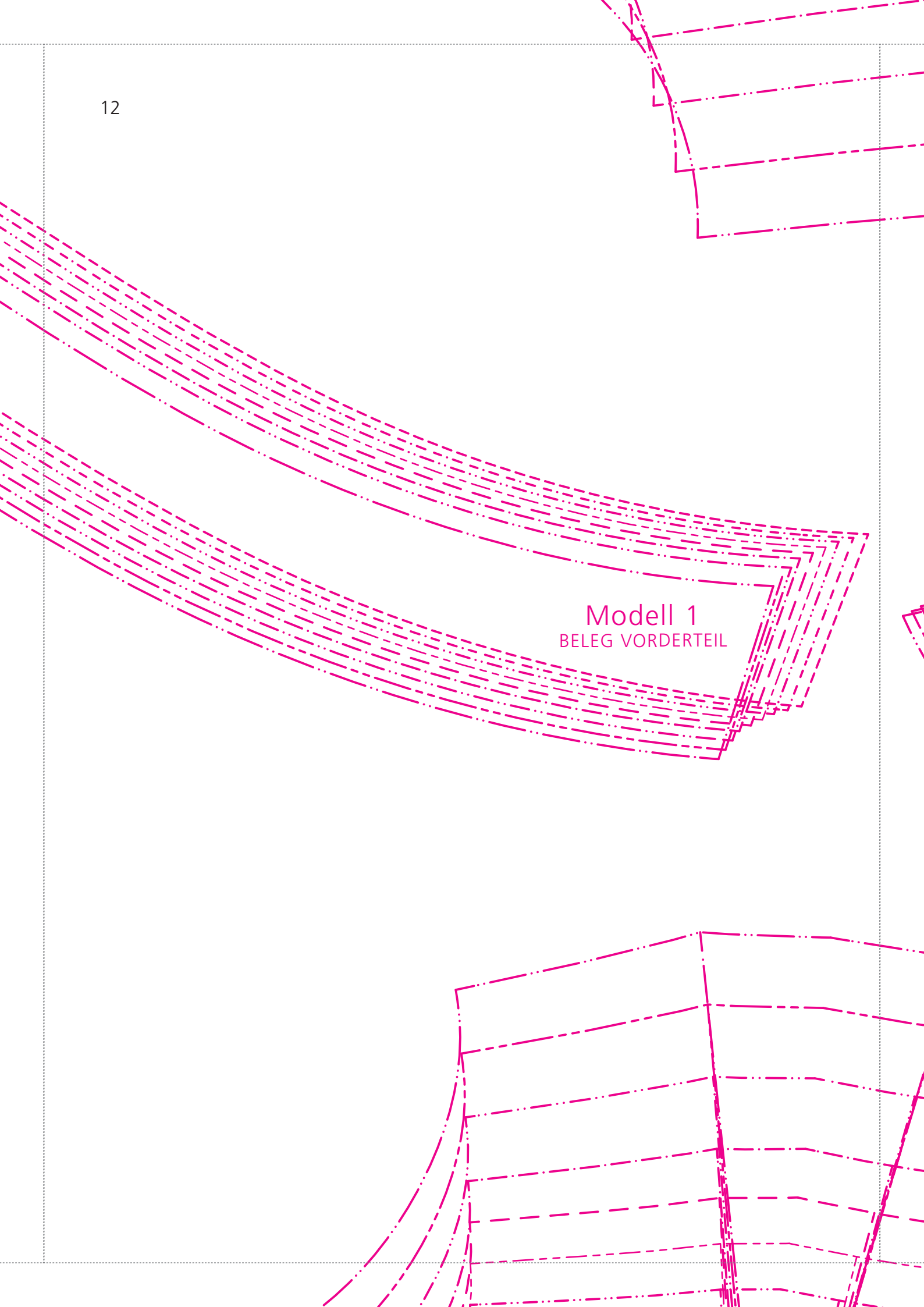
34 - - - - -
36 -
38 -
40 - - - - -
42 - - - - -
44 -
46 -
48 - - - - -
50 -



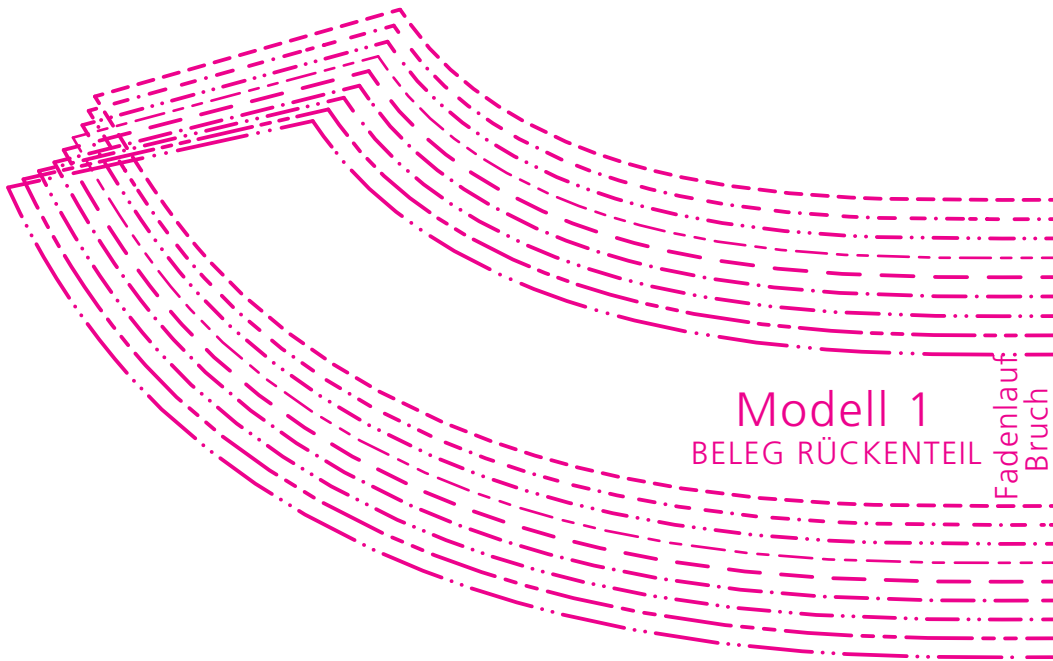


Fadenlauf/Bruch





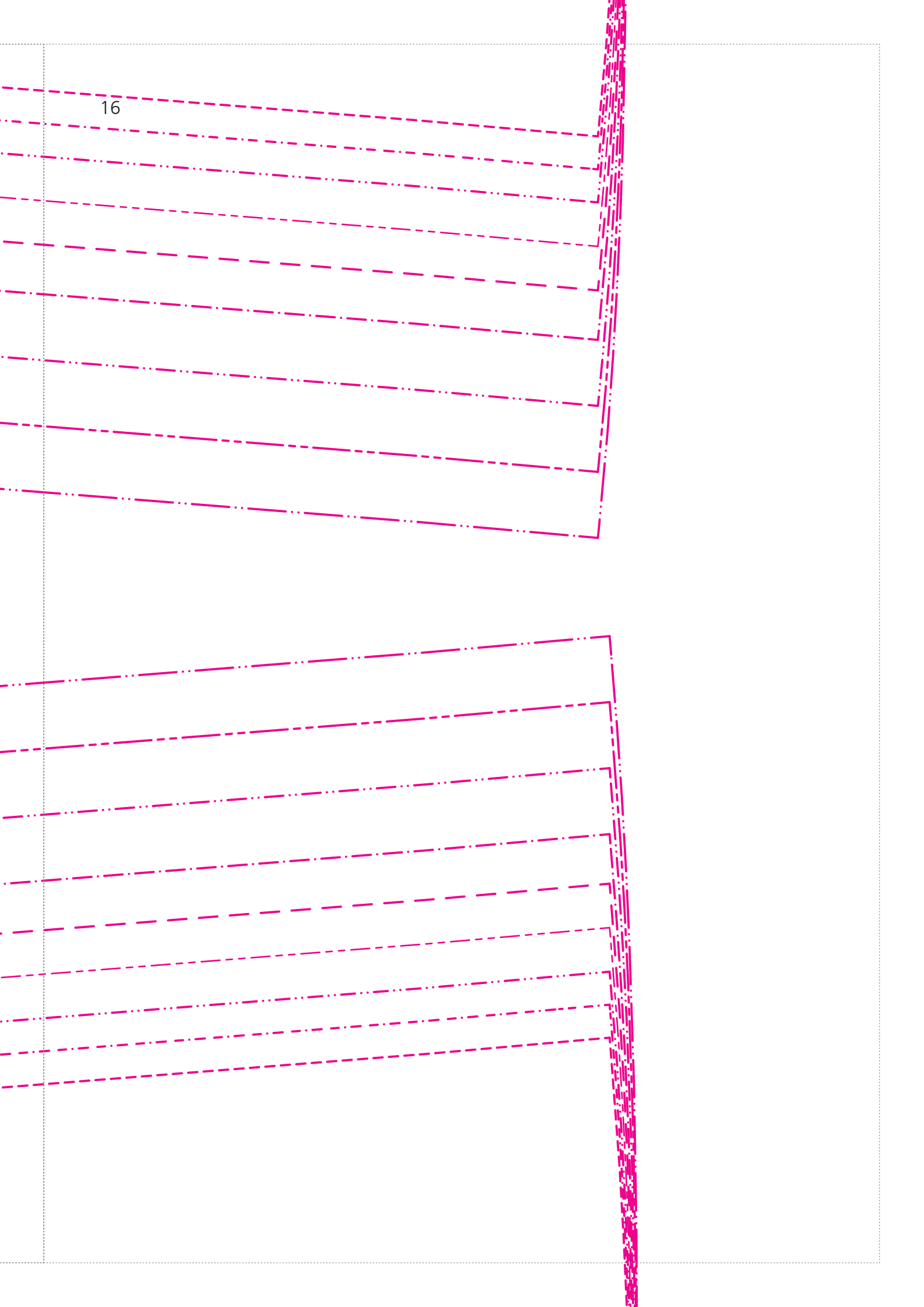
Modell 1
BELEG VORDERTEIL

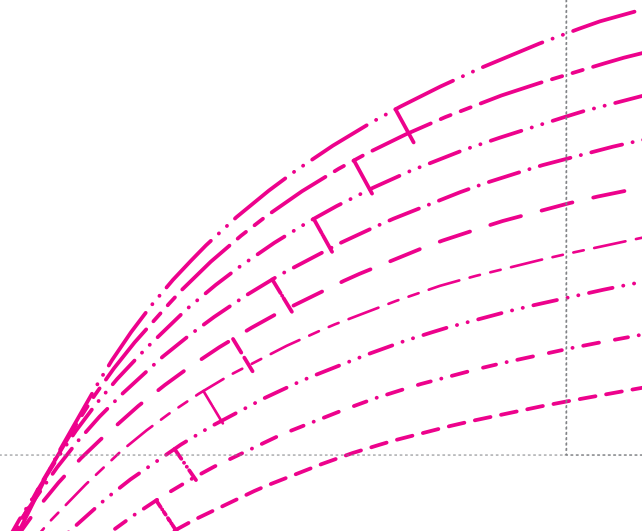
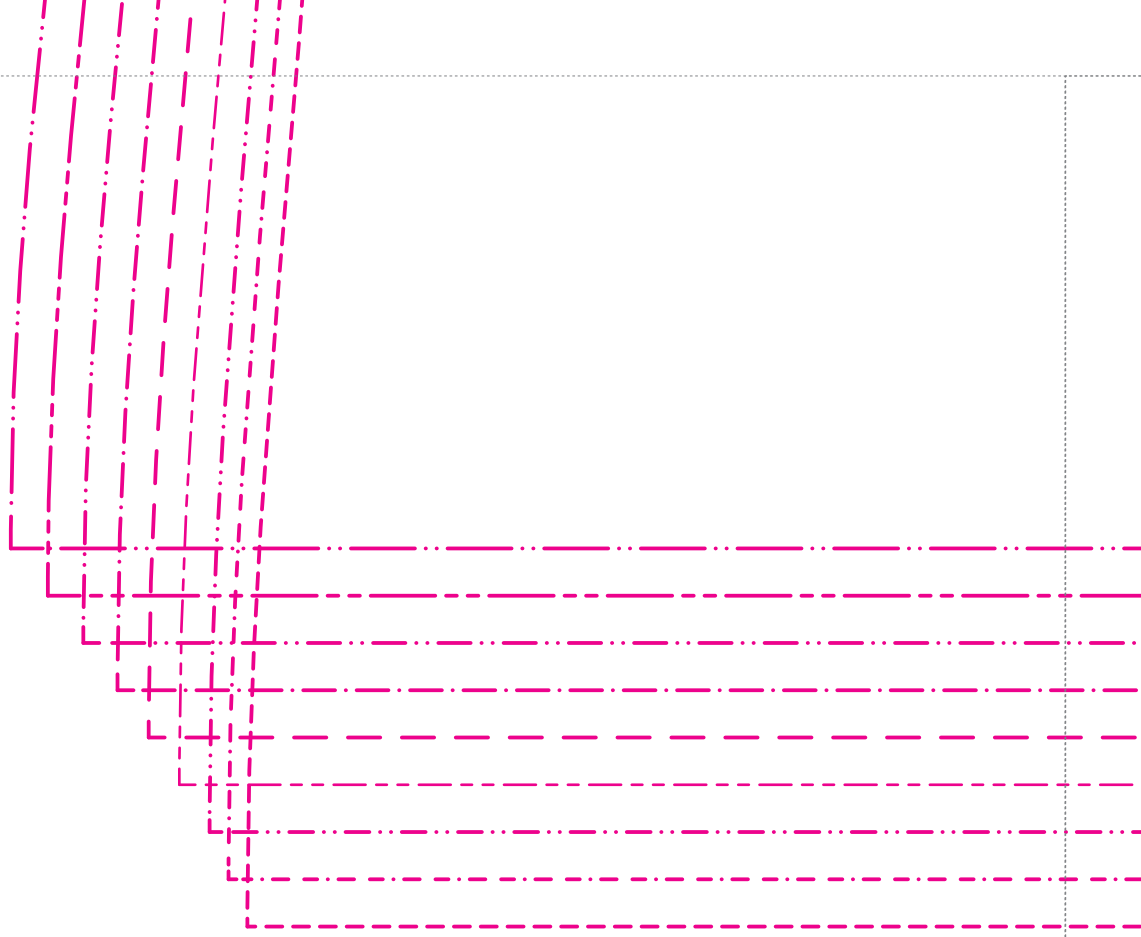


Modell 1
BELEG RÜCKENTEIL

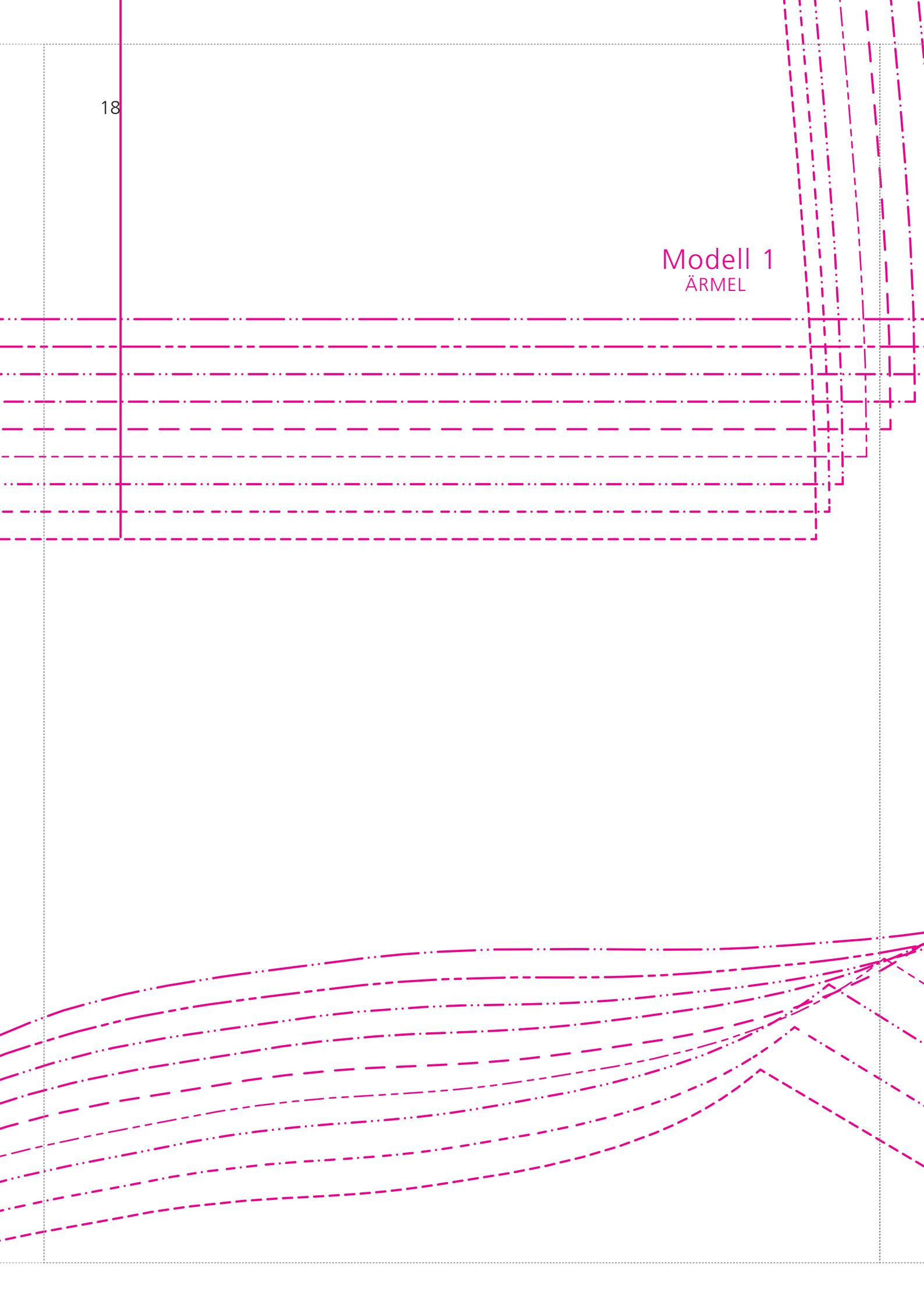
Fadenlauf:
Bruch

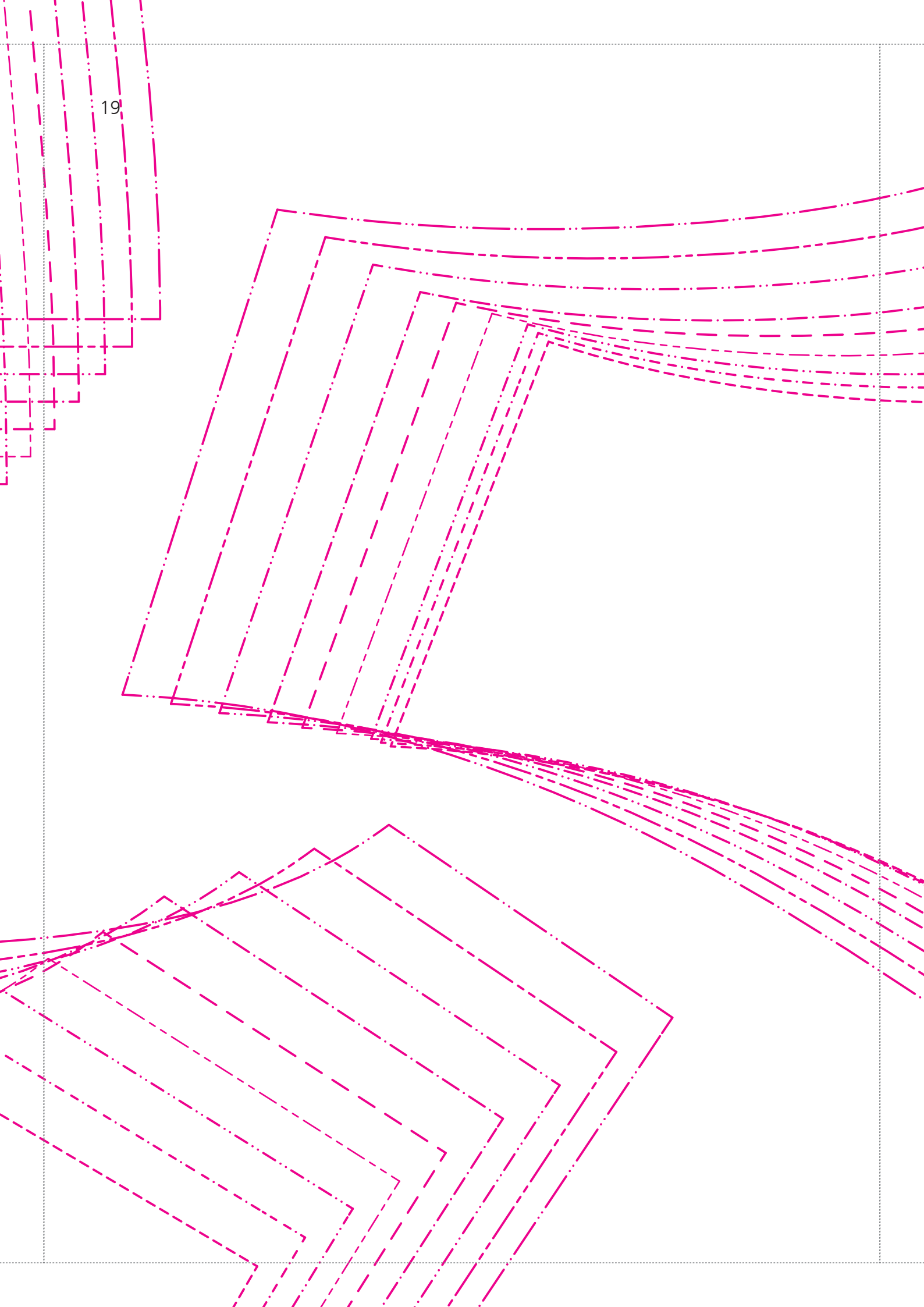
16

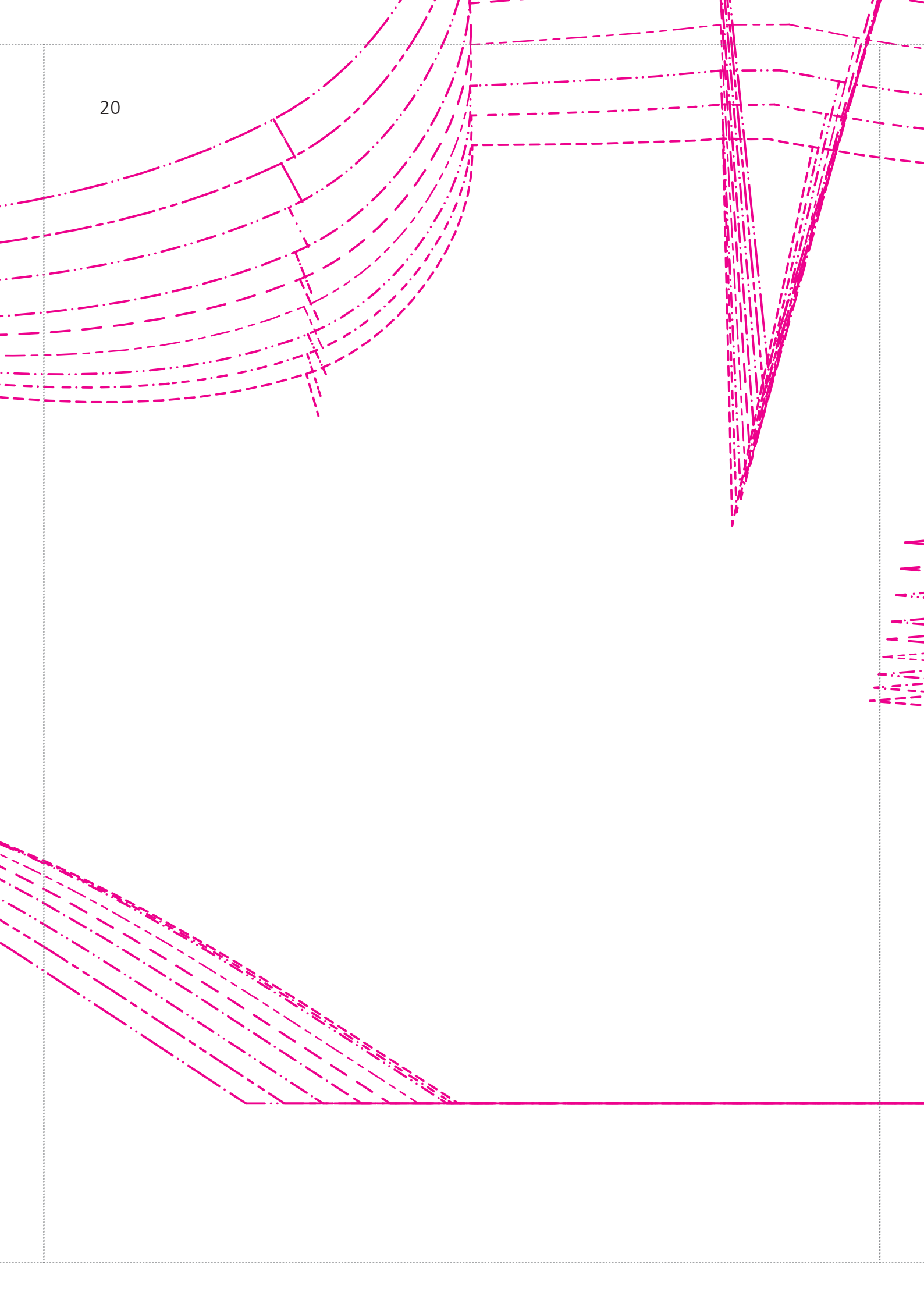


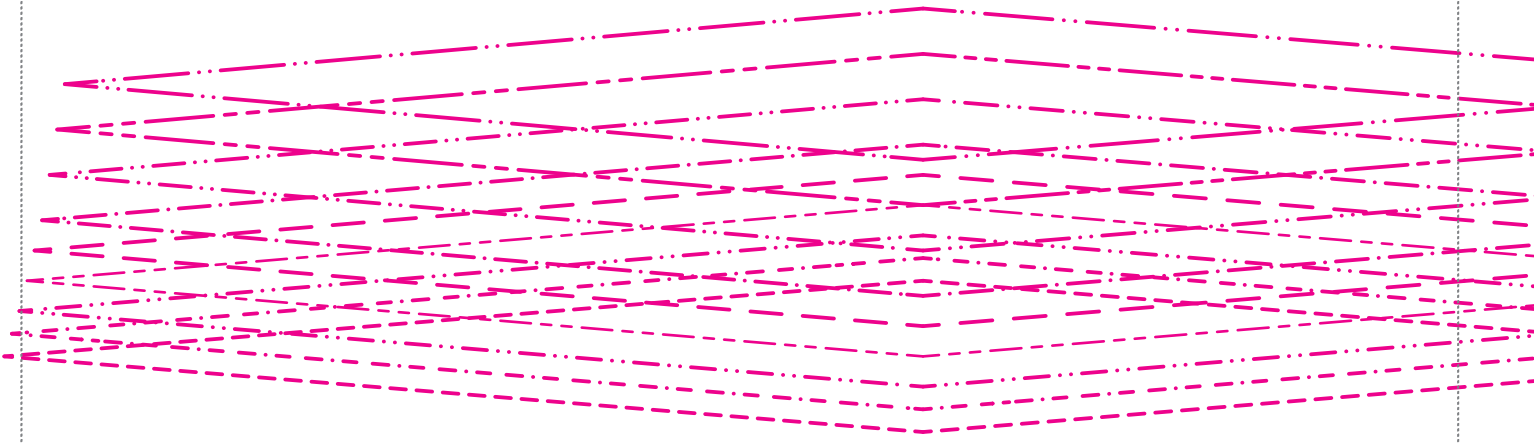


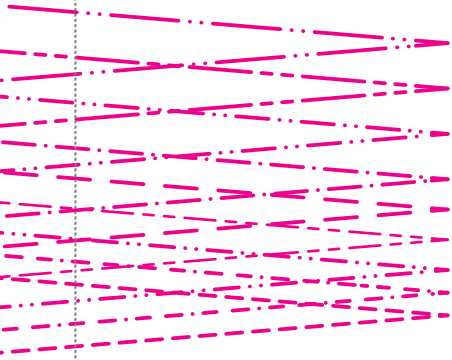
Modell 1
ÄRMEL





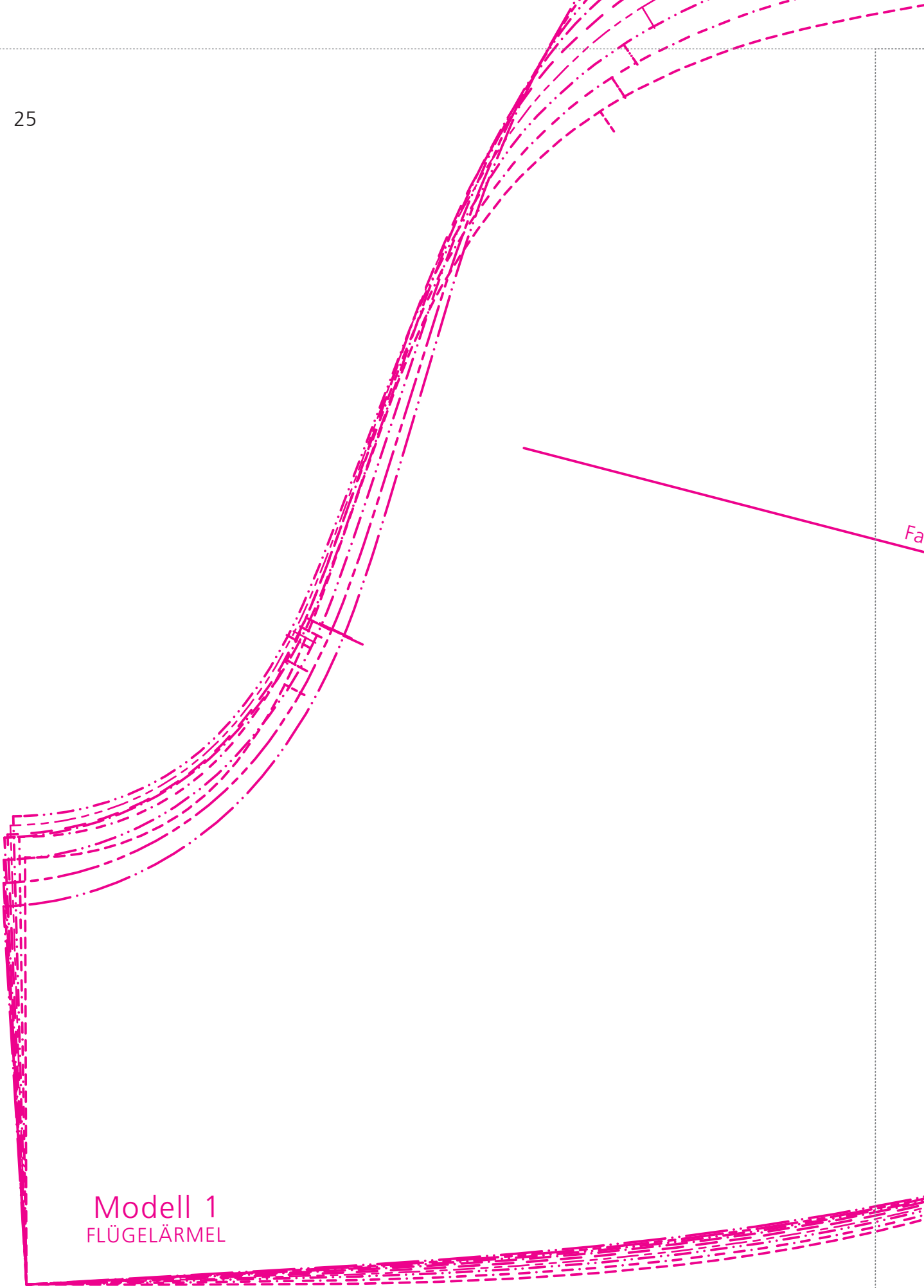






Fadenlauf/Bruch





Modell 1
FLÜGELÄRMEL

Fa

Fadenlauf

