

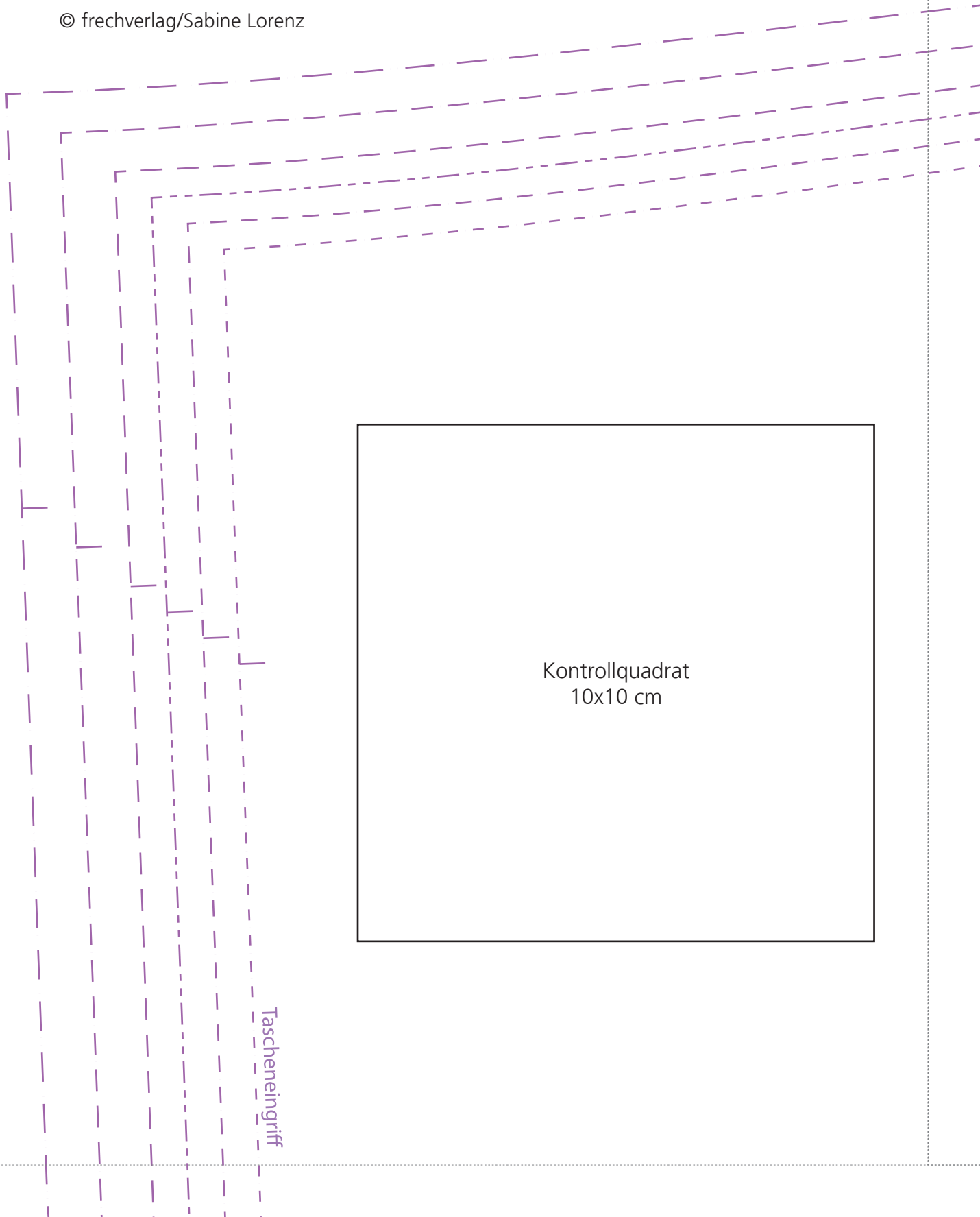
1 Schnittmuster ohne Größenanpassung, d.h. in tatsächlicher Grösse, ausdrucken.

Grösse anhand des Kontrollquadrates auf Seite 1 kontrollieren.

Entlang der gestrichelten Linien zusammenkleben gemäss Legeplan auf Seite 3.

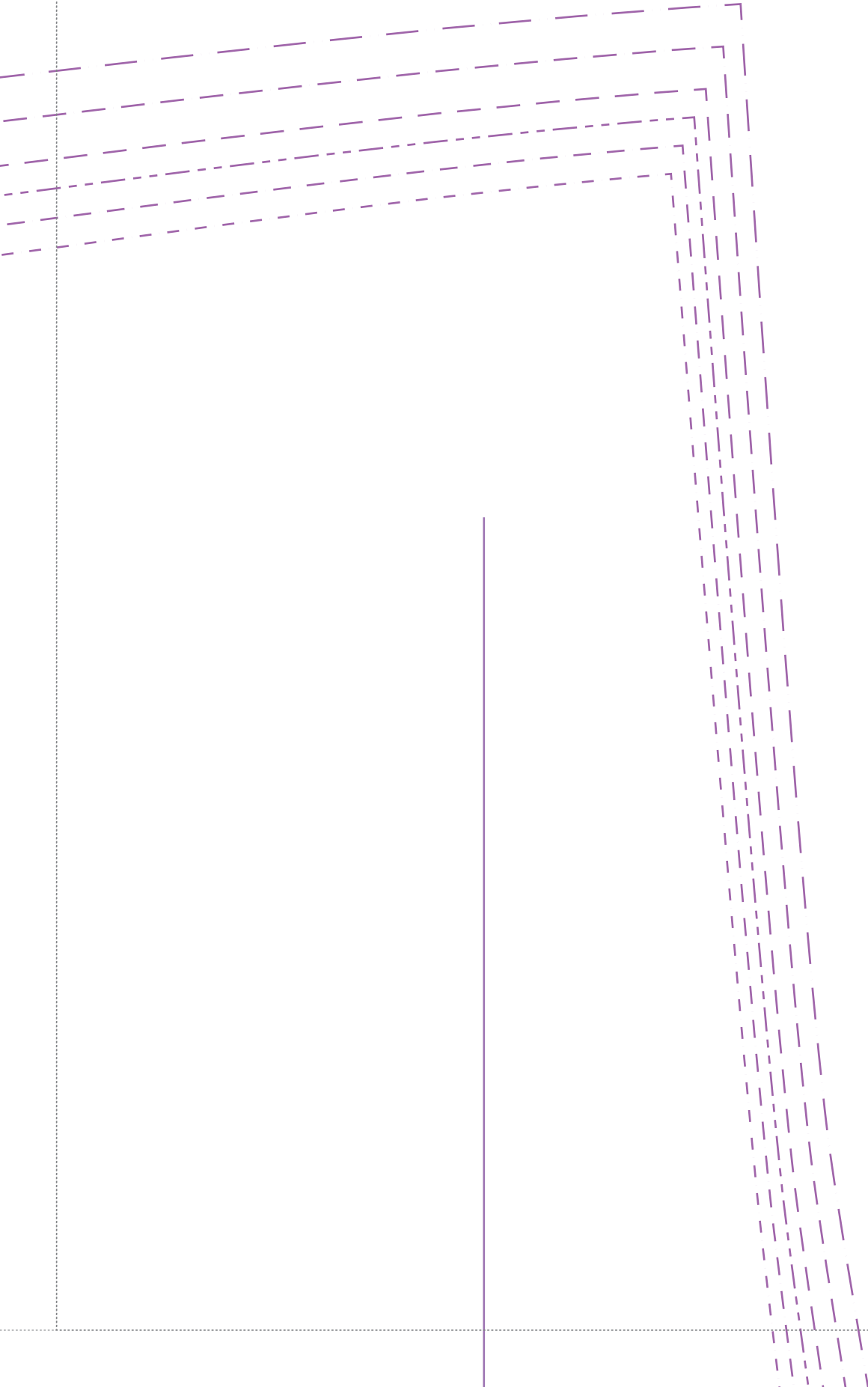
Dieses Schnittmuster stammt aus dem Buch „LeinenLooks: Lässig-leichte Mode nachhaltig selbstgenäht“

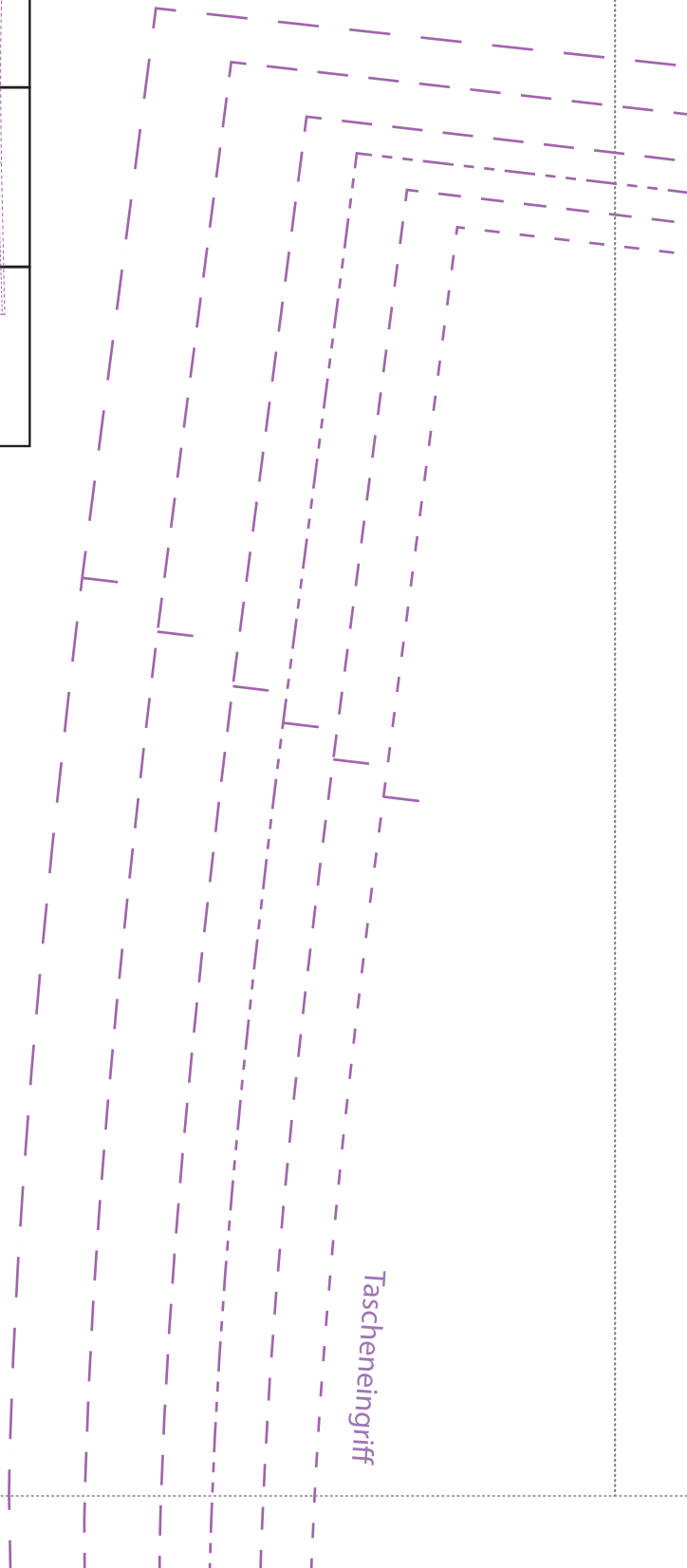
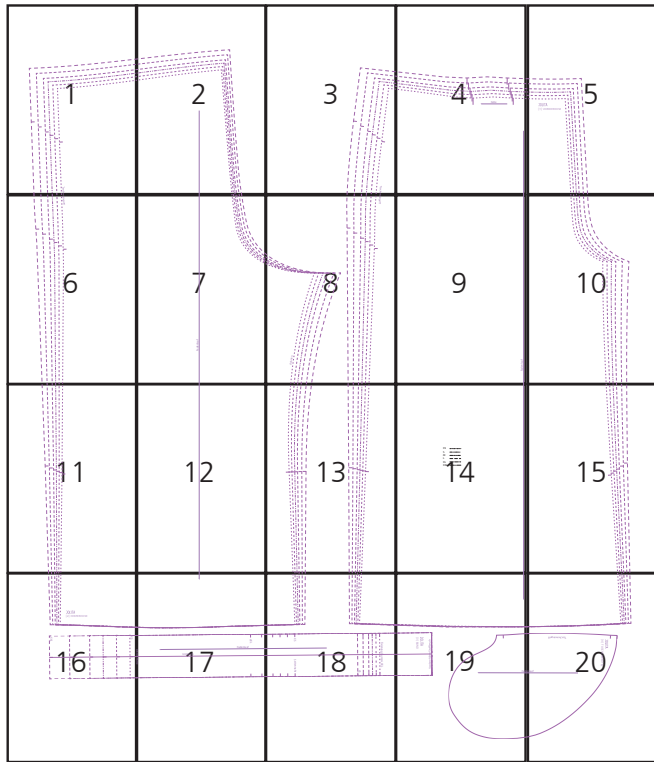
© frechverlag/Sabine Lorenz

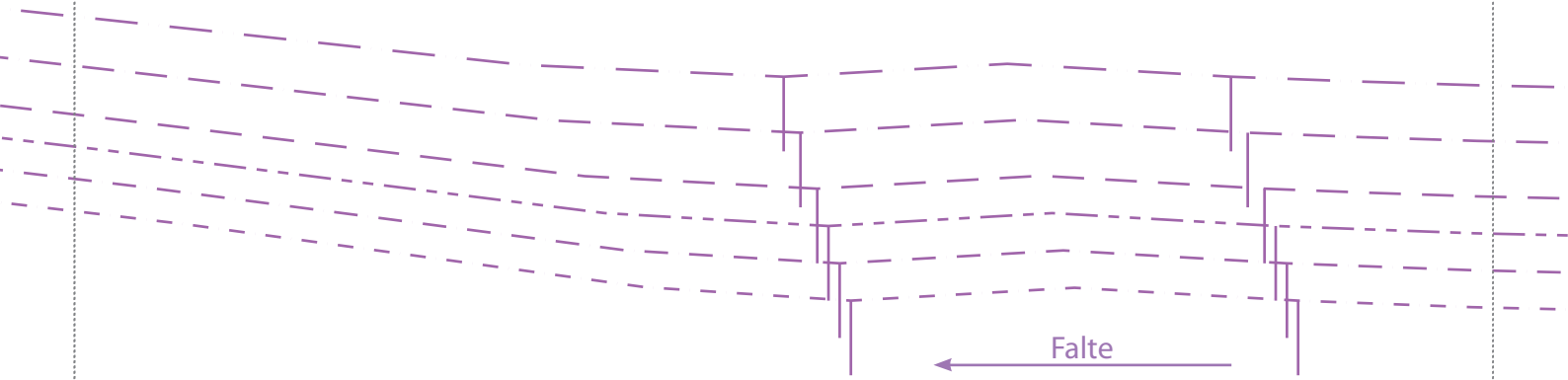


Kontrollquadrat  
10x10 cm

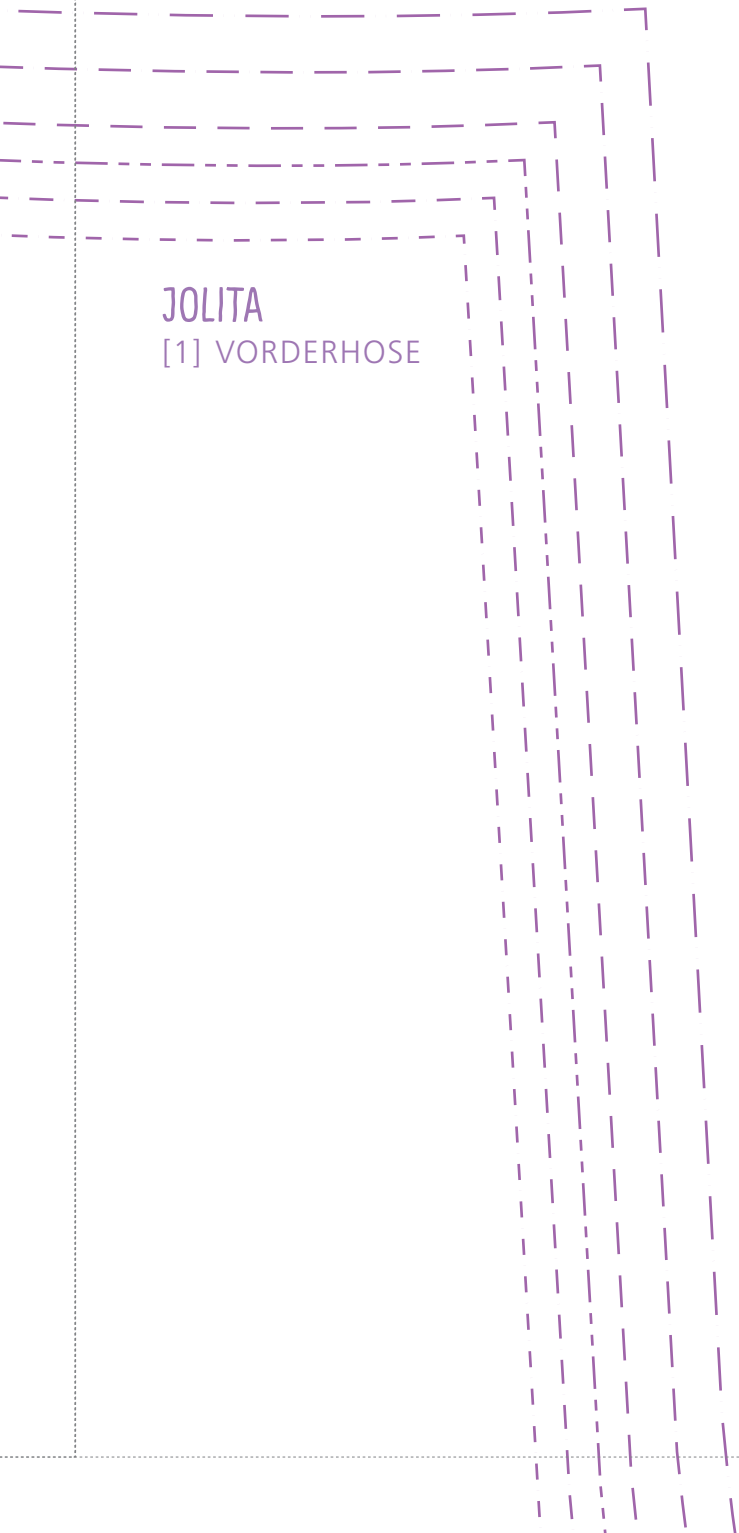
Tascheneingriff



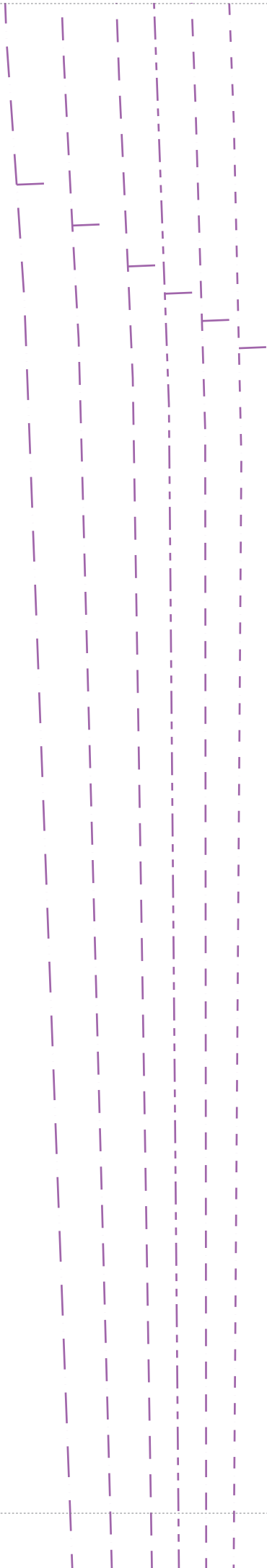




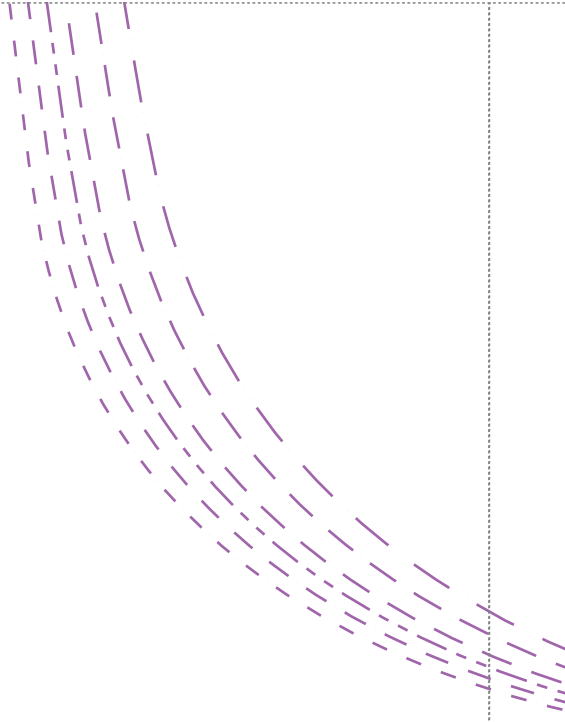
JOLITA  
[1] VORDERHOSE



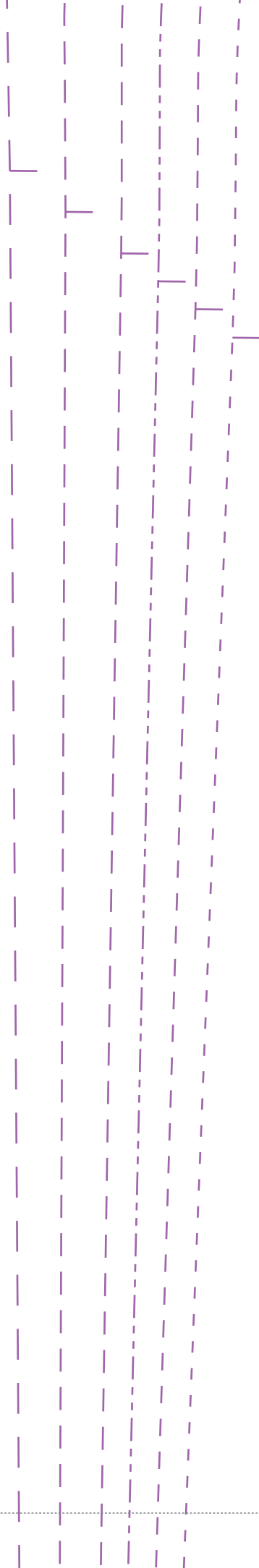
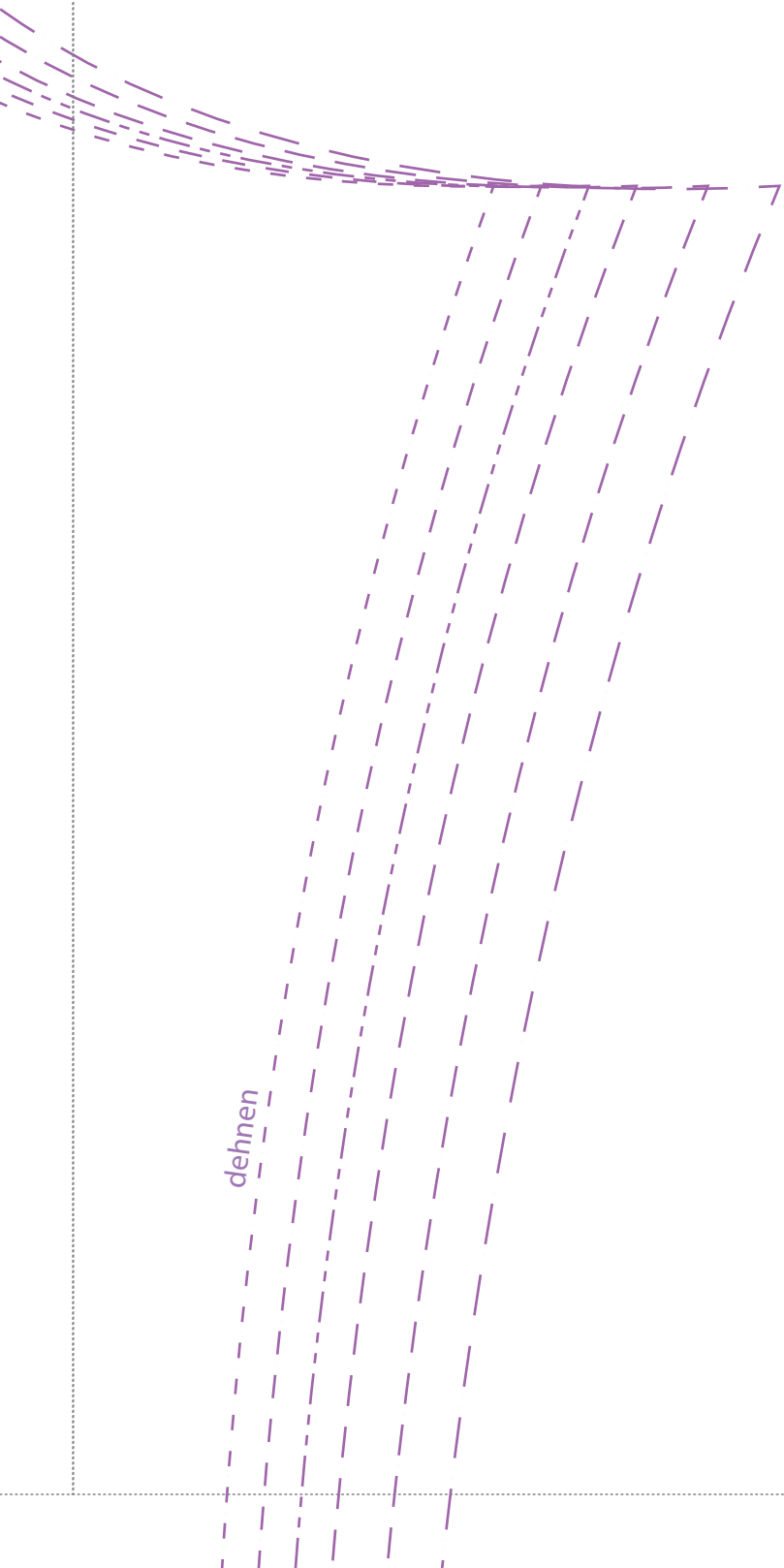
6



Fadenlauf

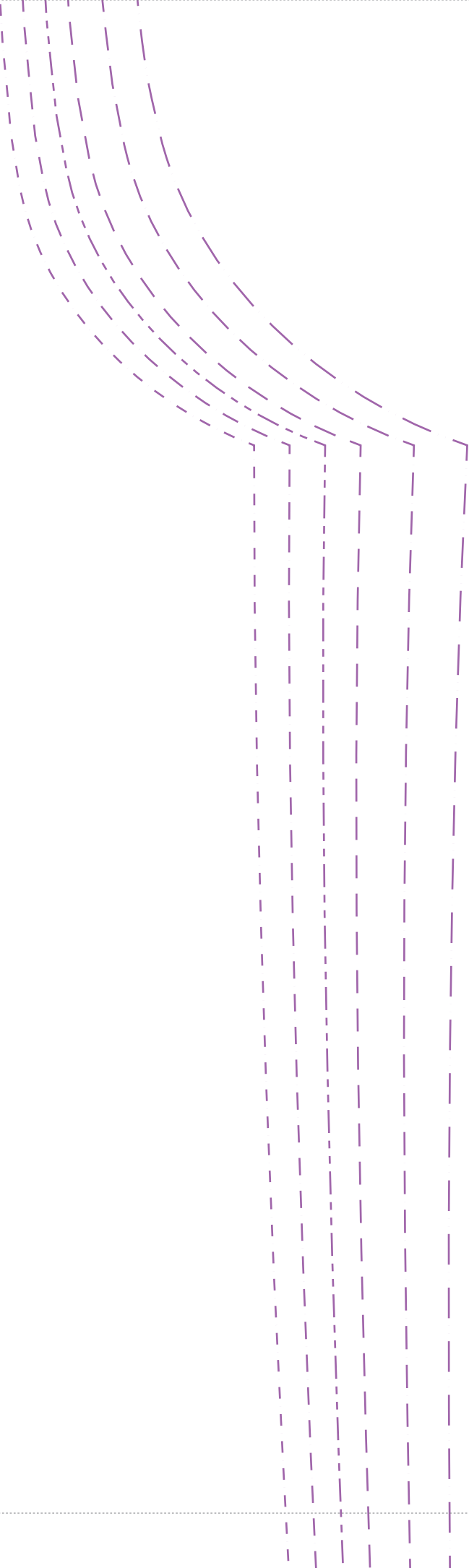


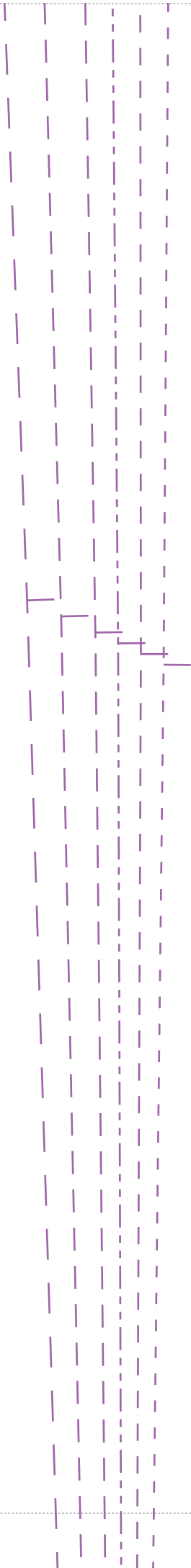
dehnen



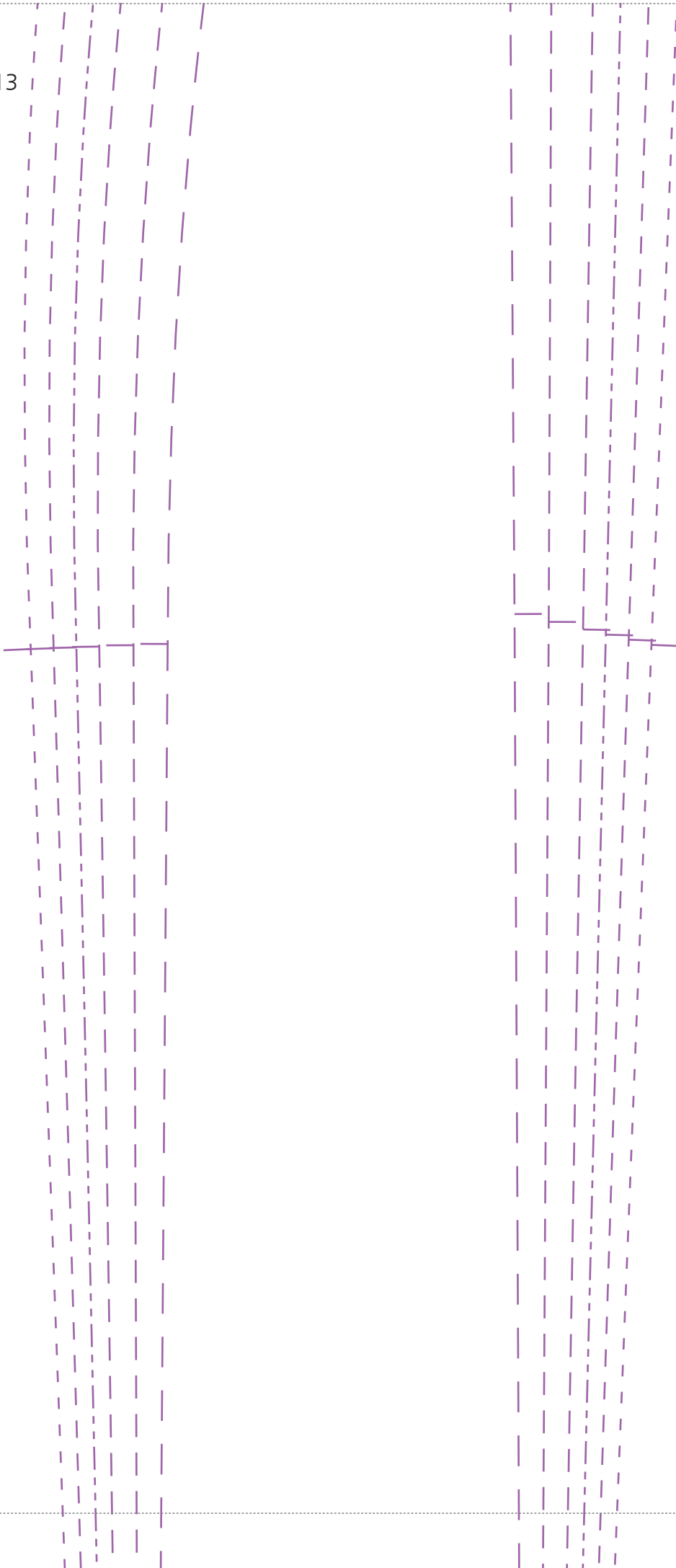




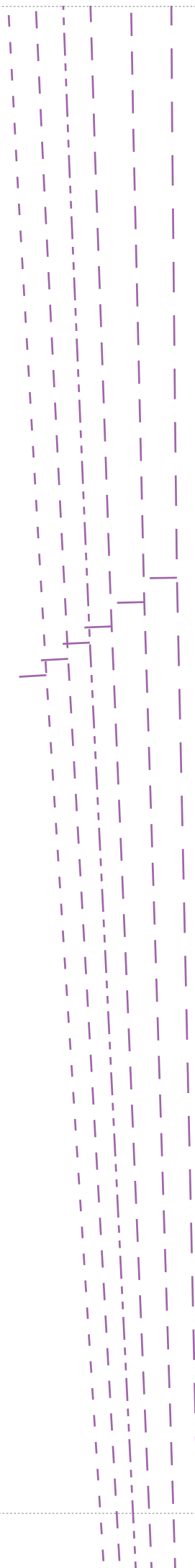








XS    - - - - -  
S     - - - - -  
M     - - - - -  
L     - - - - -  
XL    - - - - -  
XXL   - - - - -

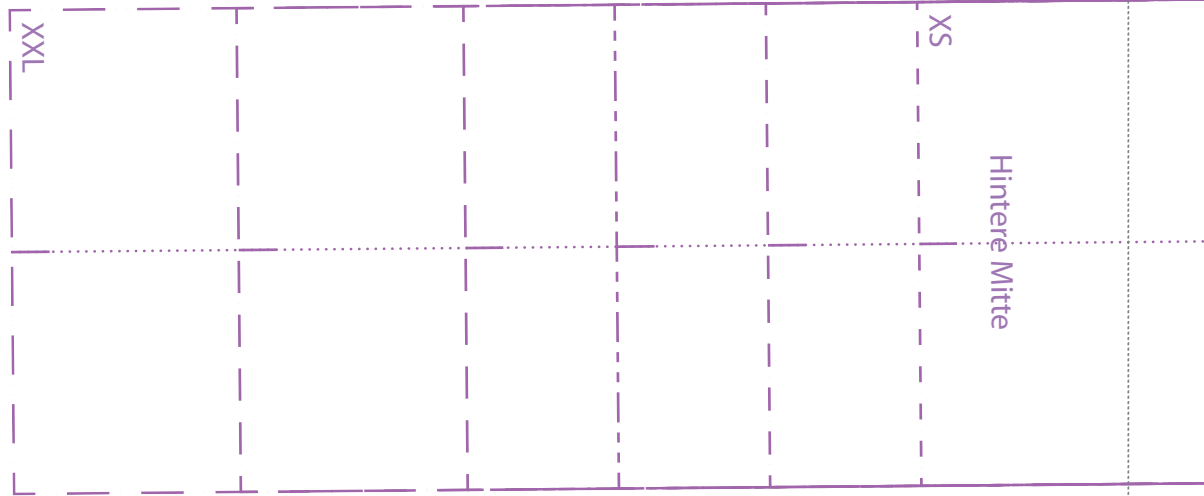


JOLITA  
[2] HINTERHOSE

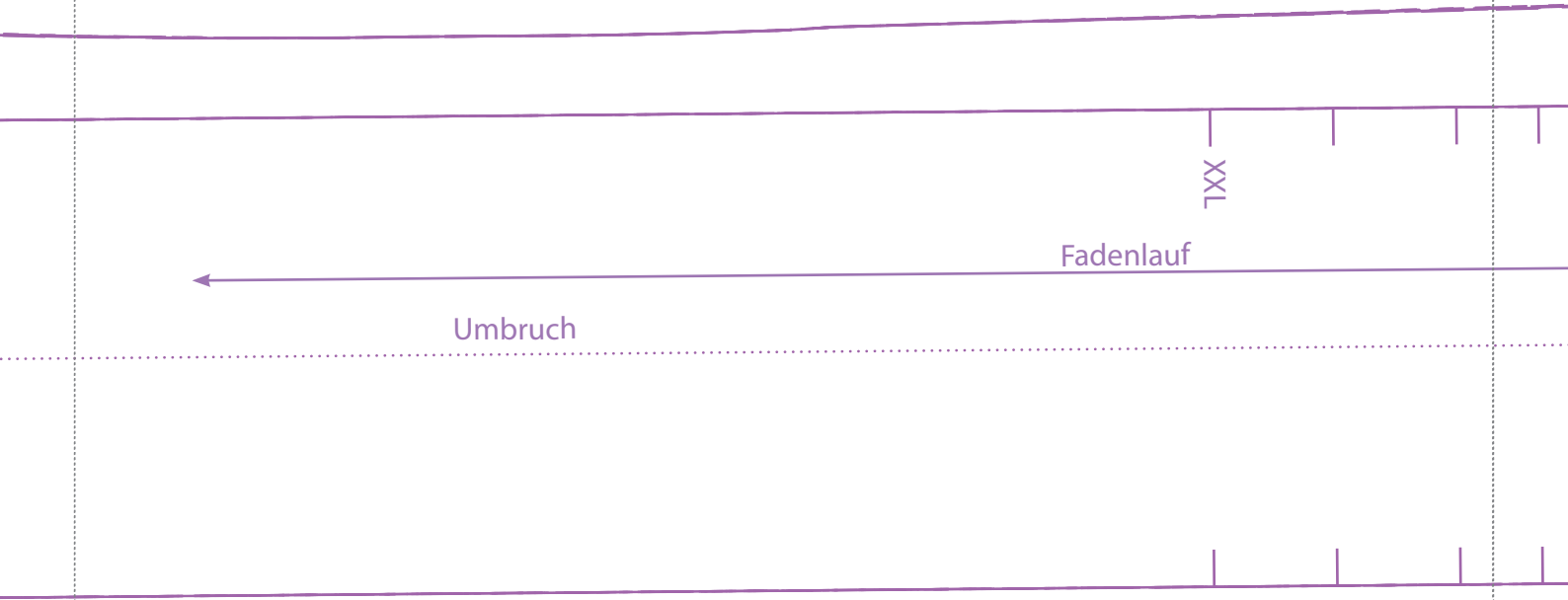
XXL

XS

Hintere Mitte







18

XS

Seitennaht

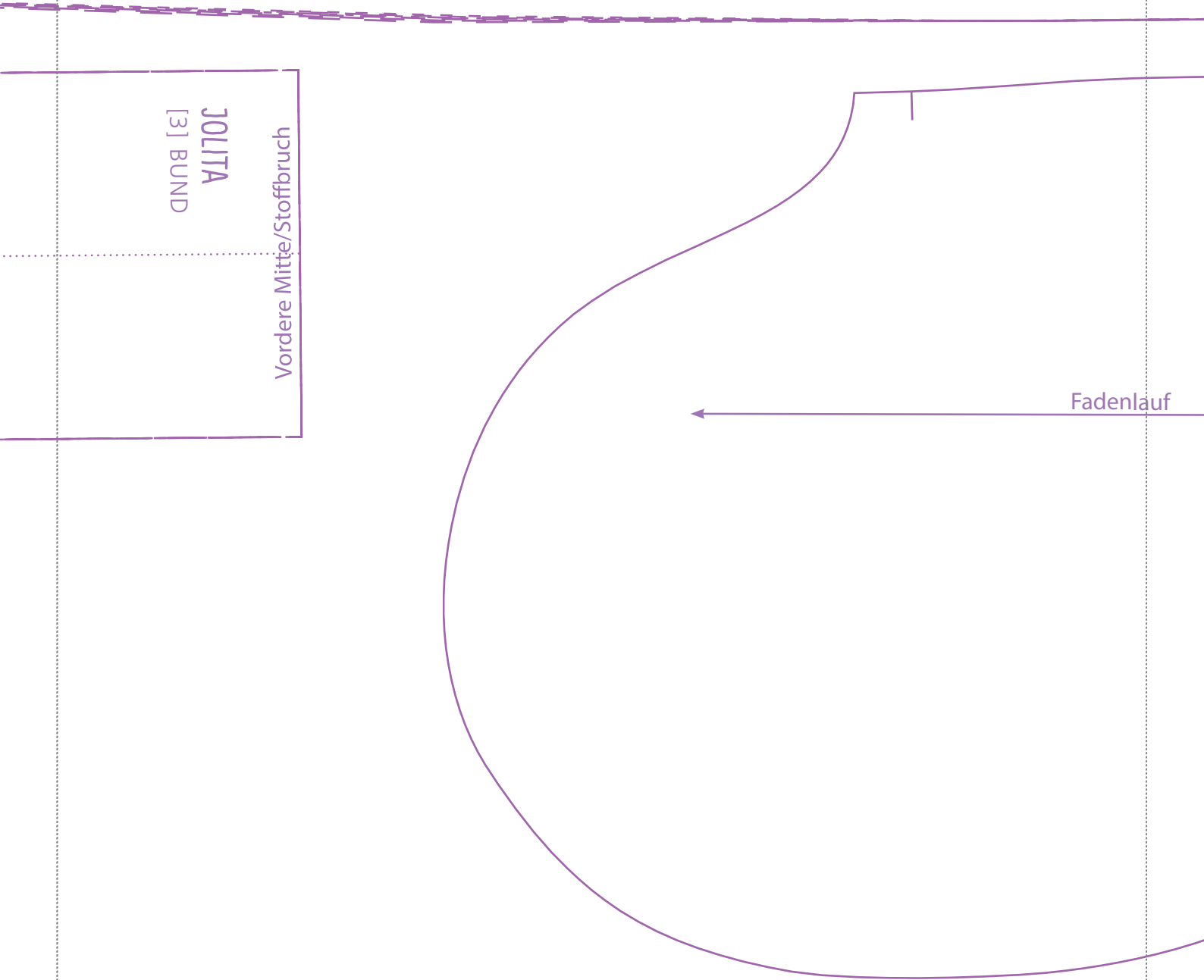
Fixierung Gummi XXL

XS

JOLITA  
[3] BUND

Vordere Mitte/Stoffbruch

Fadenlauf



20



Tascheneingriff

JOLITA  
[4] TASCHENBEUTEL

denlauf

