

10 x 10 cm

4 x 4 Inch

Stoffbruch / Fold / Pli / Stofvouw

3

Tunnelzug / Drawstring / Passant / Tunnelkoord

1A

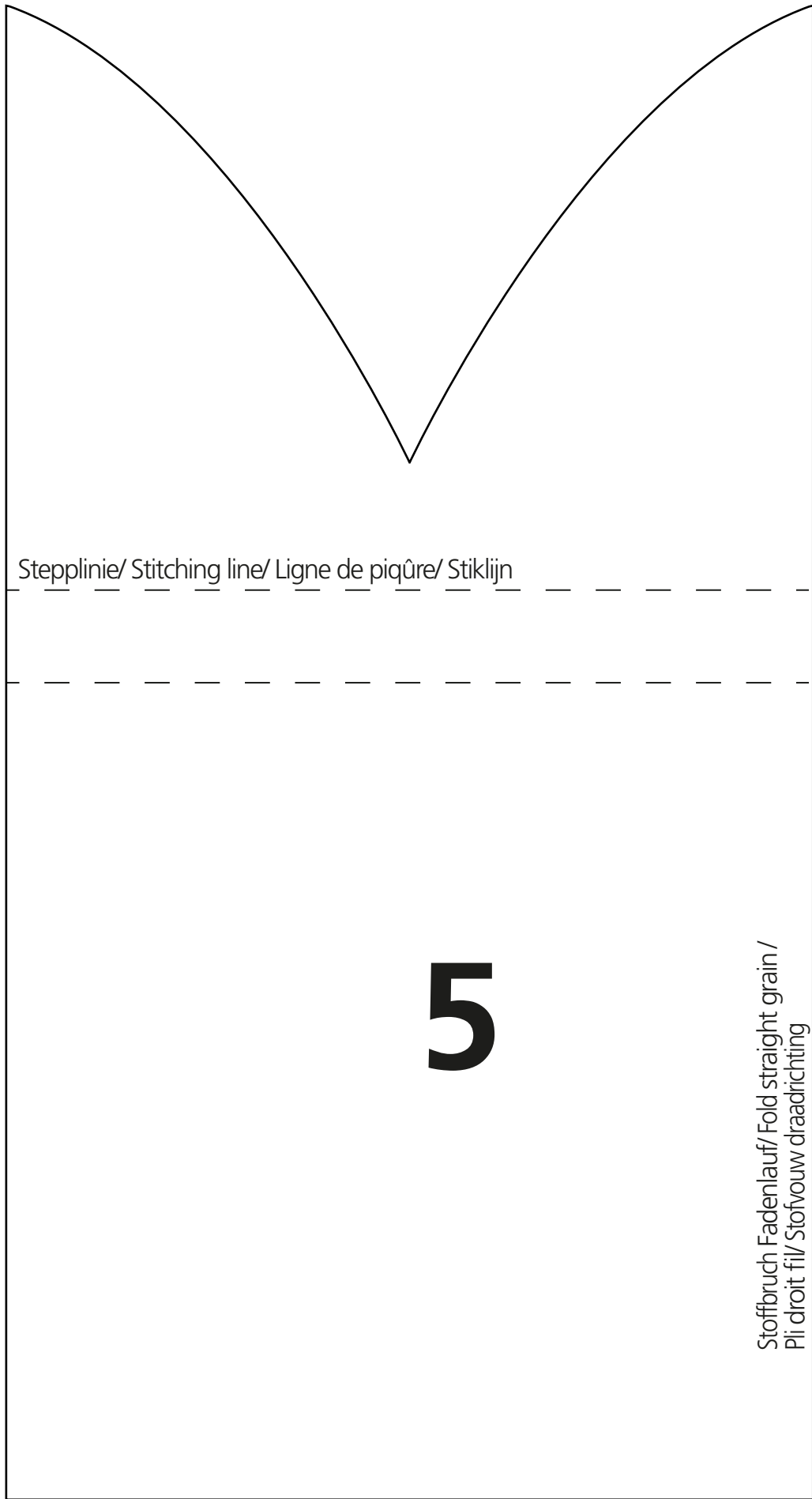
Fadenlauf / Straight grain / Droit fil / Draadrichting

4

2A

**A**

**1A**



Stepplinie/ Stitching line/ Ligne de piqûre/ Stiklijn

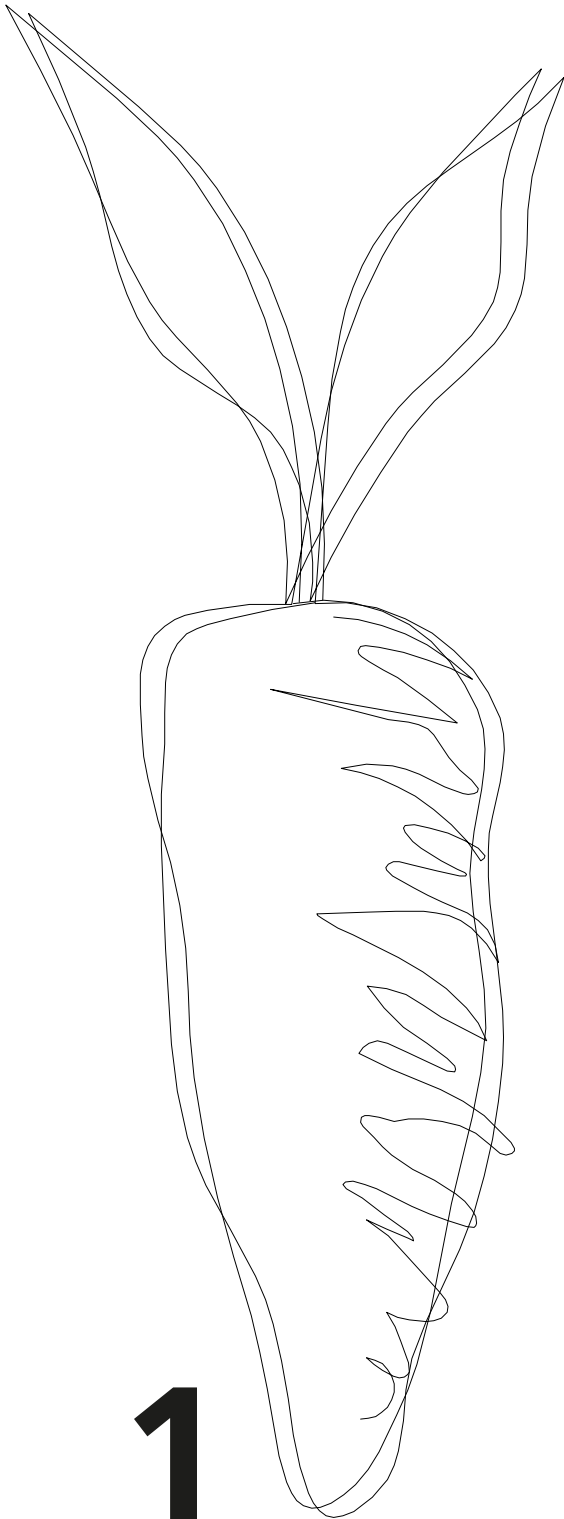
cm  
1  
2  
3  
4  
5  
6  
7  
8  
9  
10  
11  
12  
13  
14  
15  
Inch  
1  
2  
3  
4  
5  
6

**5**

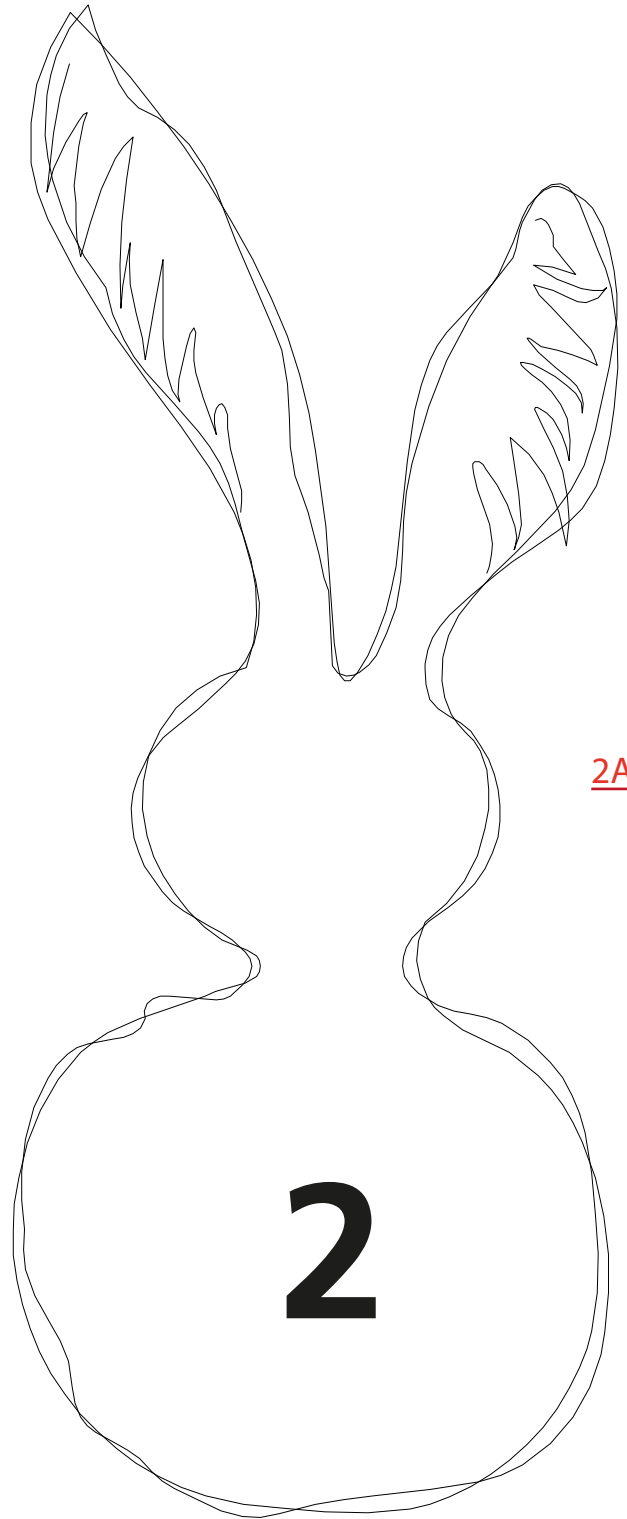
Stoffbruch Fadenlauf/ Fold straight grain/  
Pli droit fil/ Stofvouw draadrichting

**2B**

2A



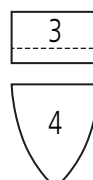
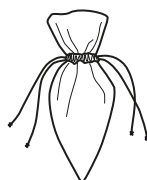
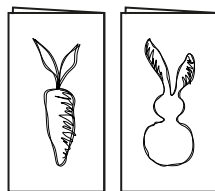
1



2

2A

# Spring & Easter 121-40 - 42



**Wichtig:** Alle Schnittteile sind ohne Nahtzugabe, falls nichts anderes vermerkt ist!

**Important:** All Patterns are without seam allowances, unless otherwise indicated !

**Important:** Toutes découpes sont sans surplus de couture (sauf mention contraire)!

**Attentie:** Alle patroondeelen zijn zonder naadtoeslag, tenzij anders vermeld