

# SEW SIMPLE NÄHEN

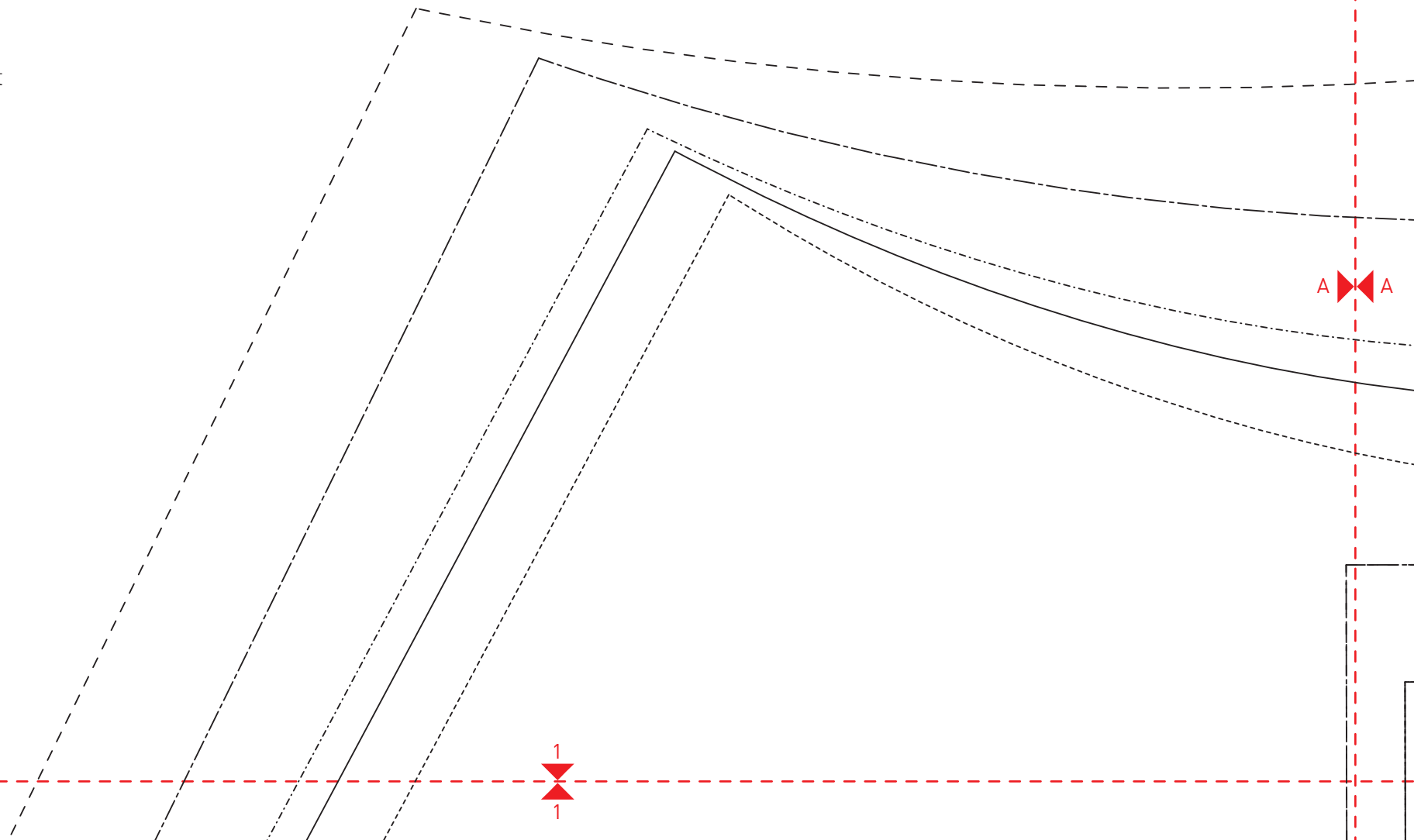
PRAKTISCHE ALLTAGSMODE IN GRÖSSE 34-50

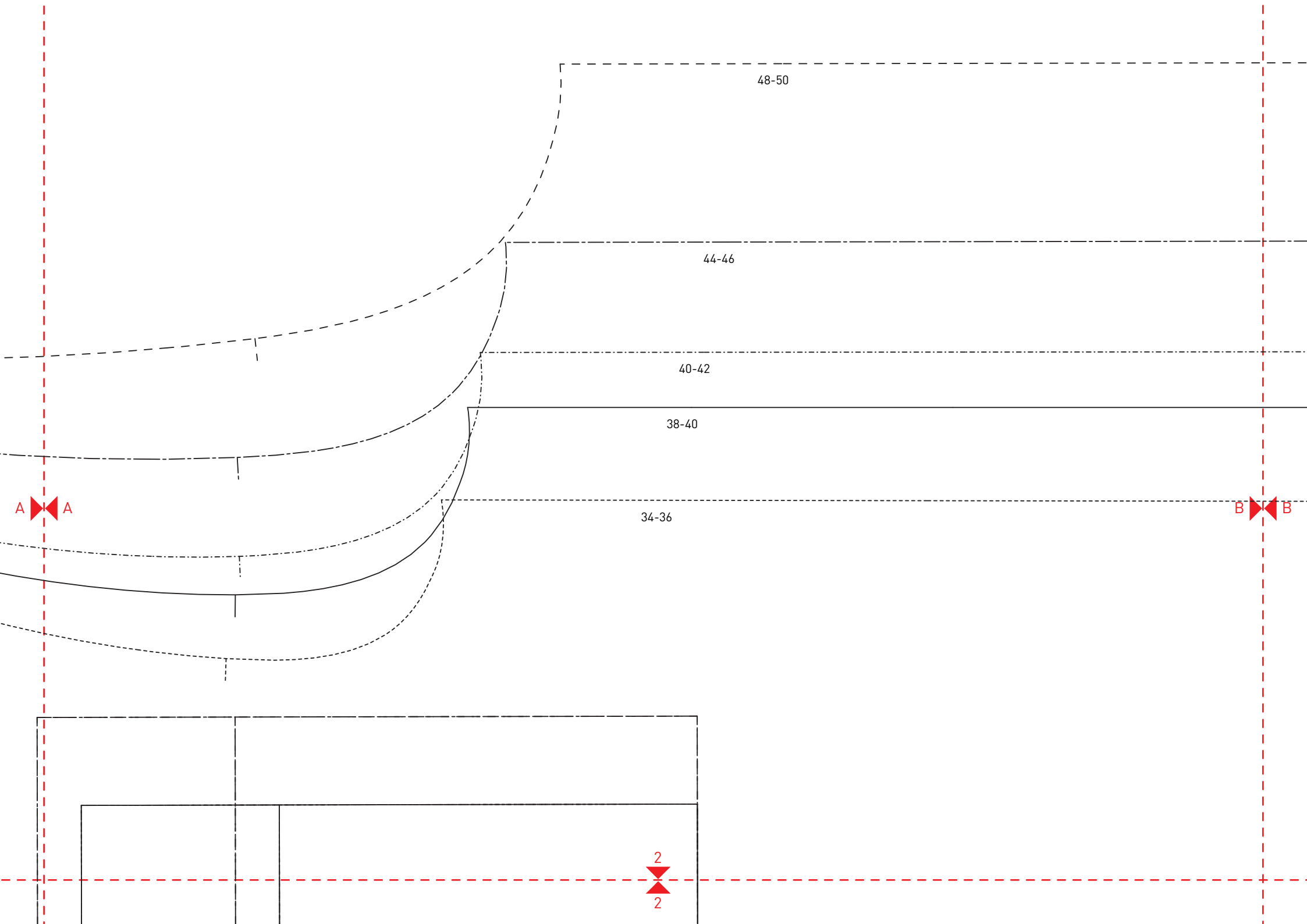
Alle Rechte bei ©Edition Michael Fischer GmbH, Igling

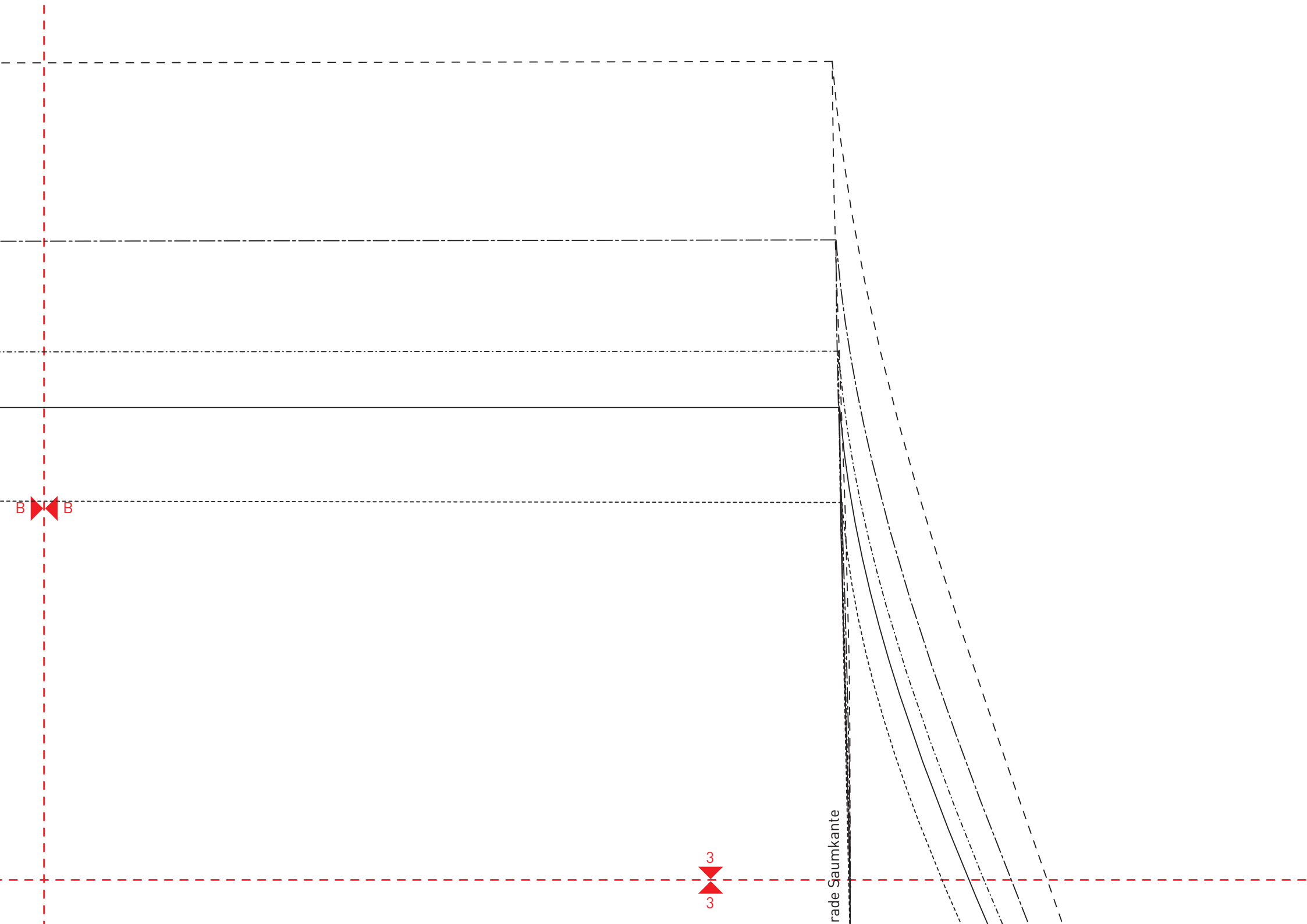
## OVERSIZE-HEMDBLUSE

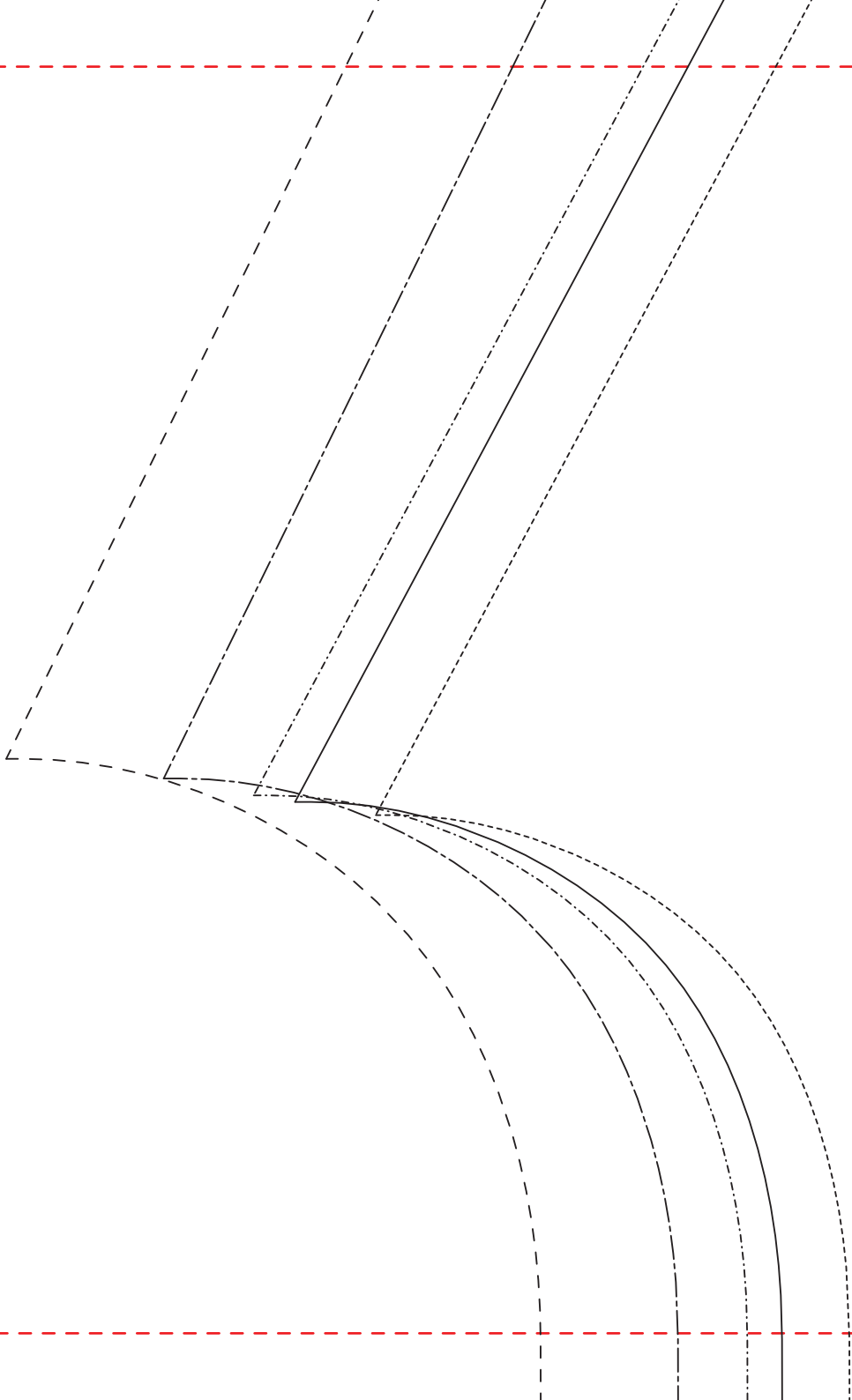
Die Naht- und Saumzugaben sind nicht enthalten.

 Kontrollquadrat  
1cm x 1cm



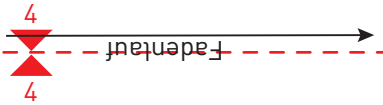






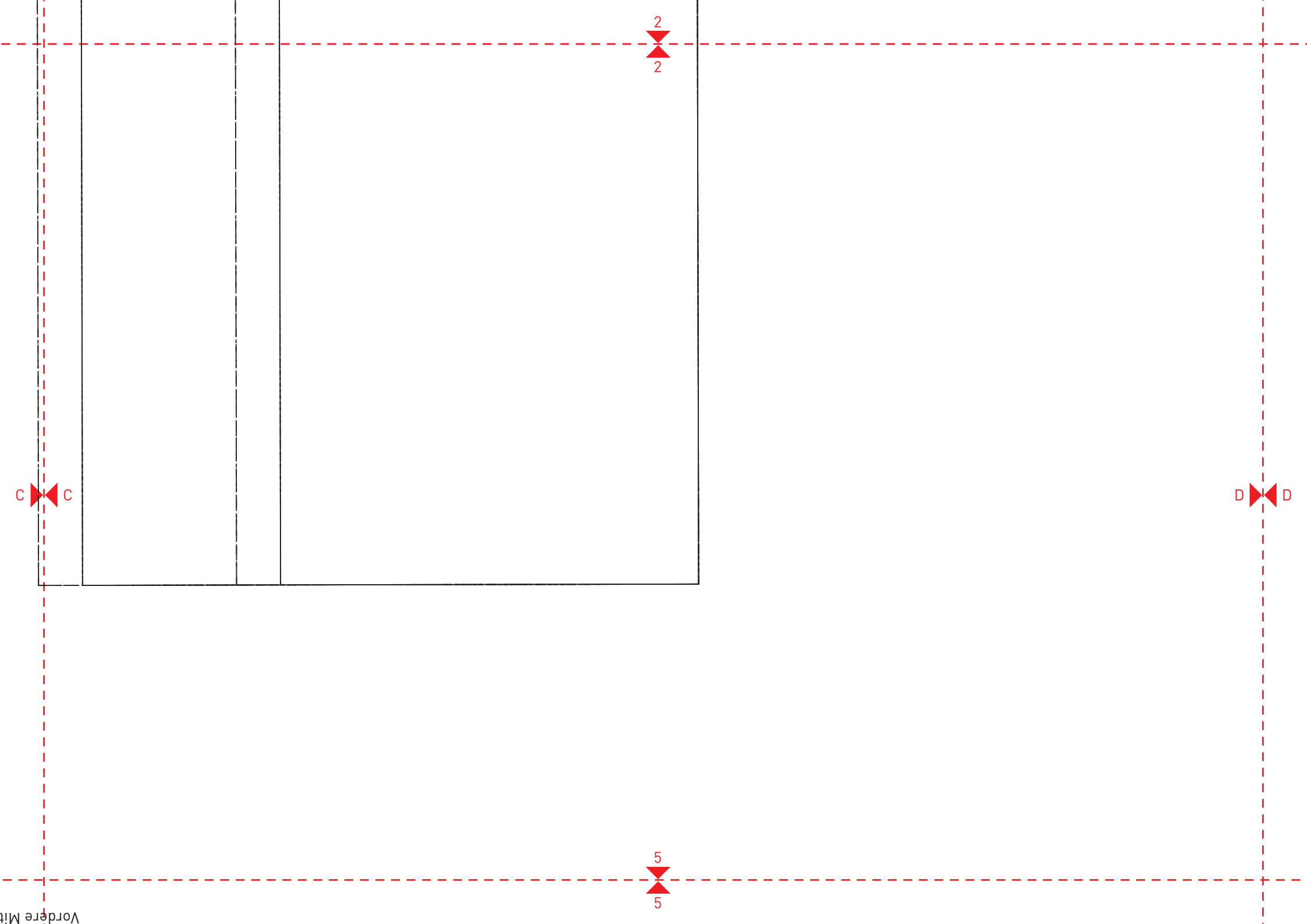
**OVERSIZE-HEMDBLUSE**

Vorderteil  
2x gegengleich



Vordere Mitte





C

C

D

D

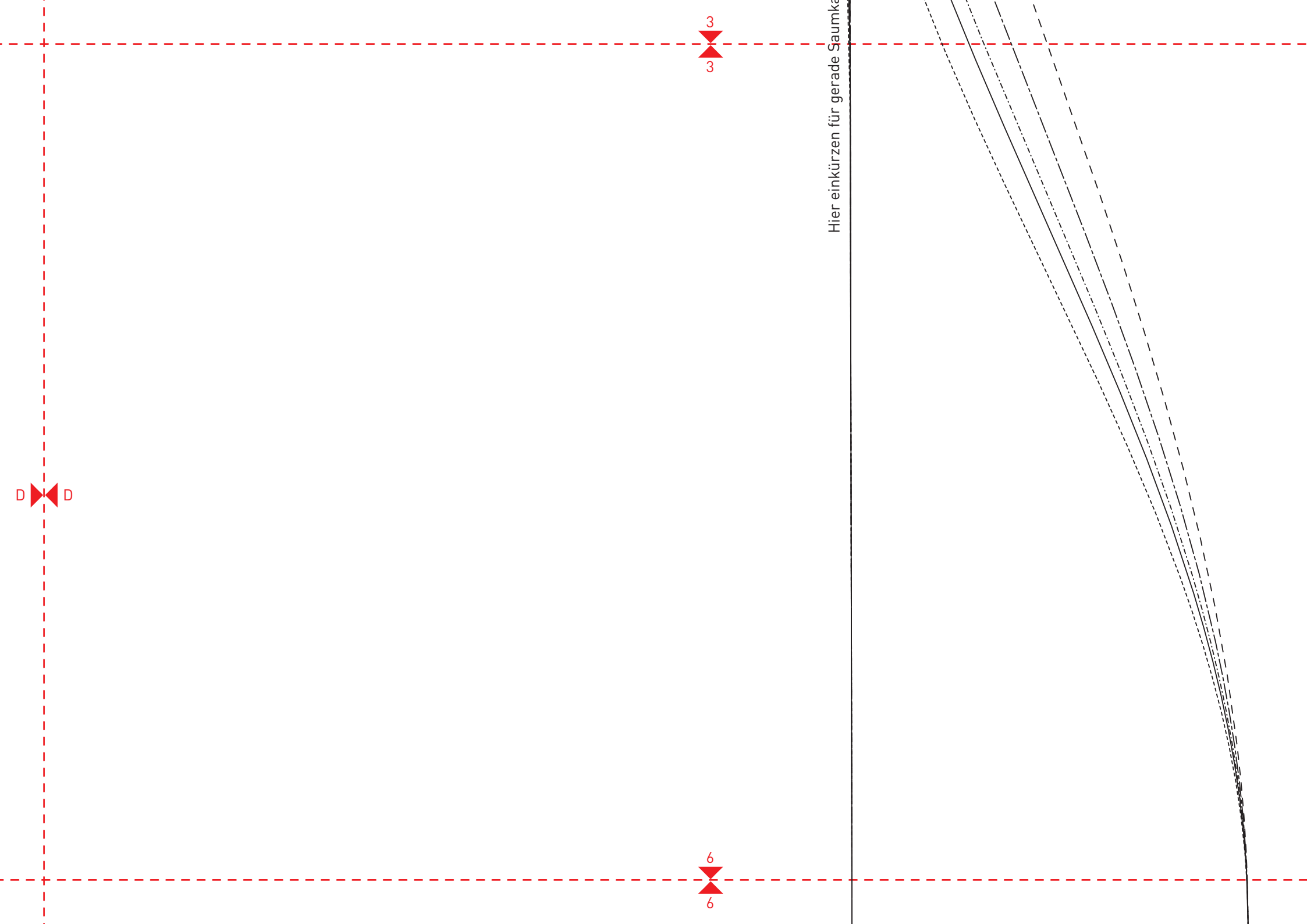
2

2

5

5

Vordere Mit



# OVERSIZE-HEMDBLUSE

Rückteil unten  
1x im Bruch

7  
7

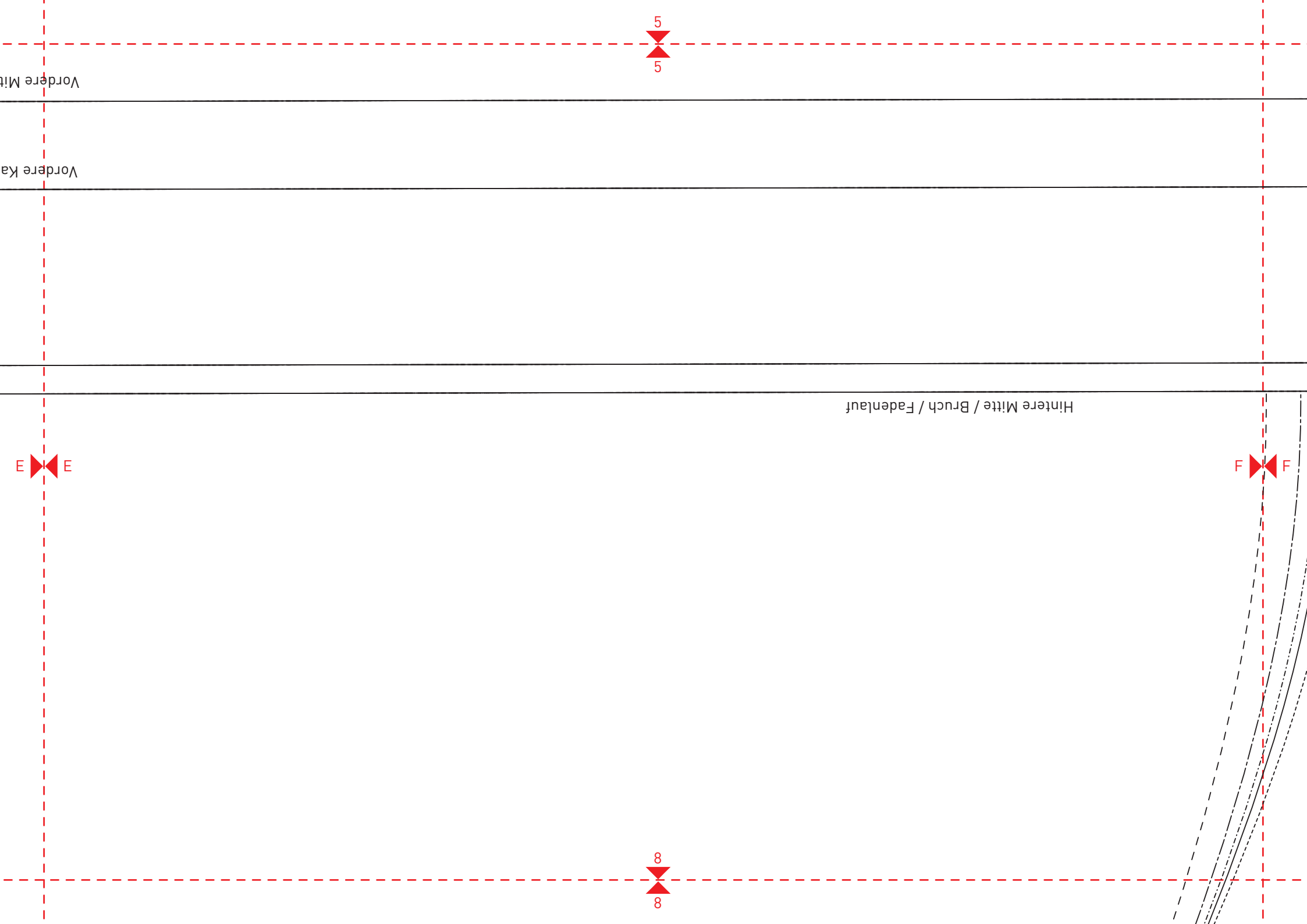
E E

Vordere Kante / Umbruch

Vordere Mitte

Fadenlauf

4  
4





6  
6

F F

48-50  
44-46  
40-42 38-40  
34-36

Bruch

Fadenlauf  
↓

**OVERSIZE-HEMDBLUSE**  
Manschette  
2x im Bruch

9  
9

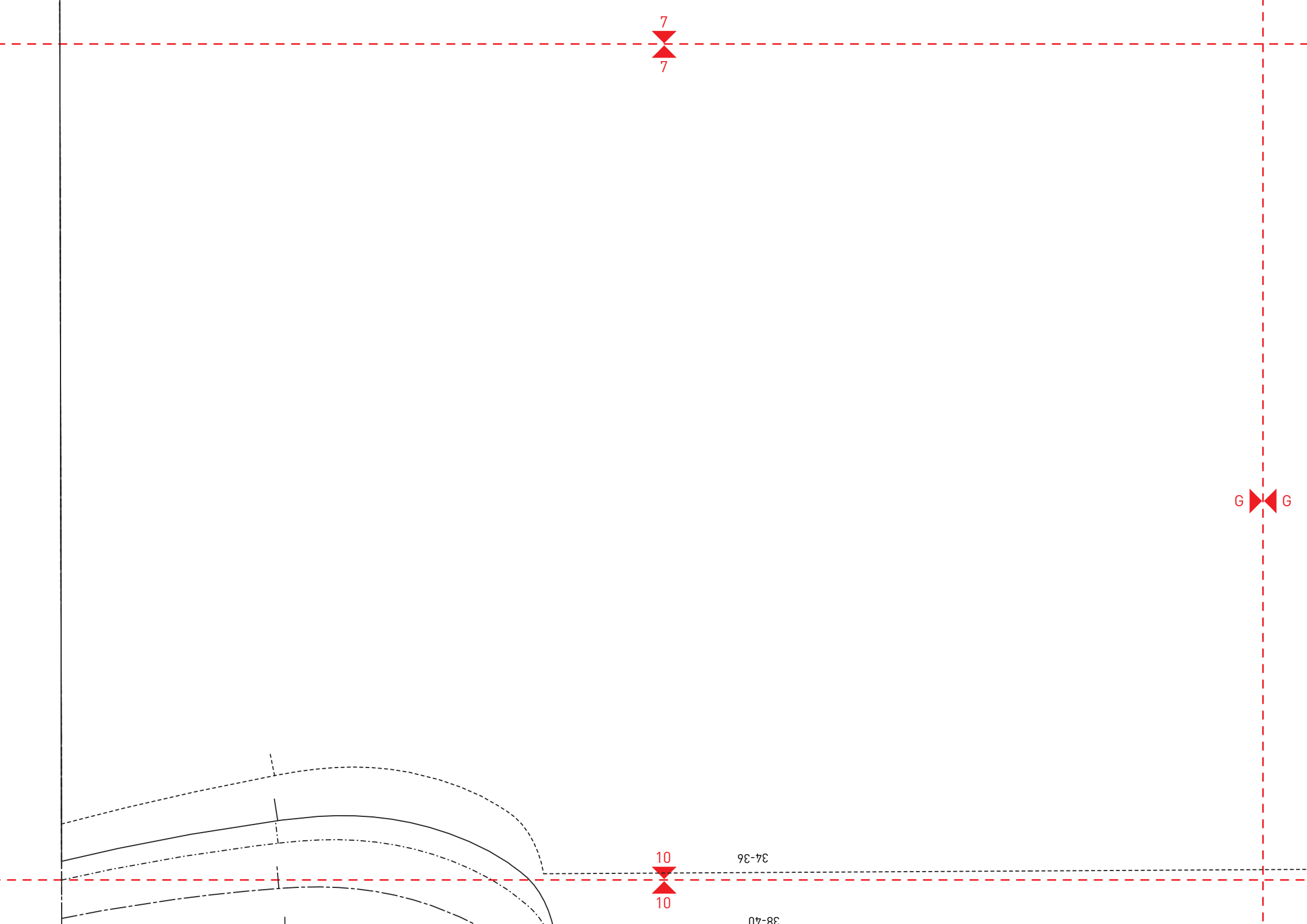
7  
7

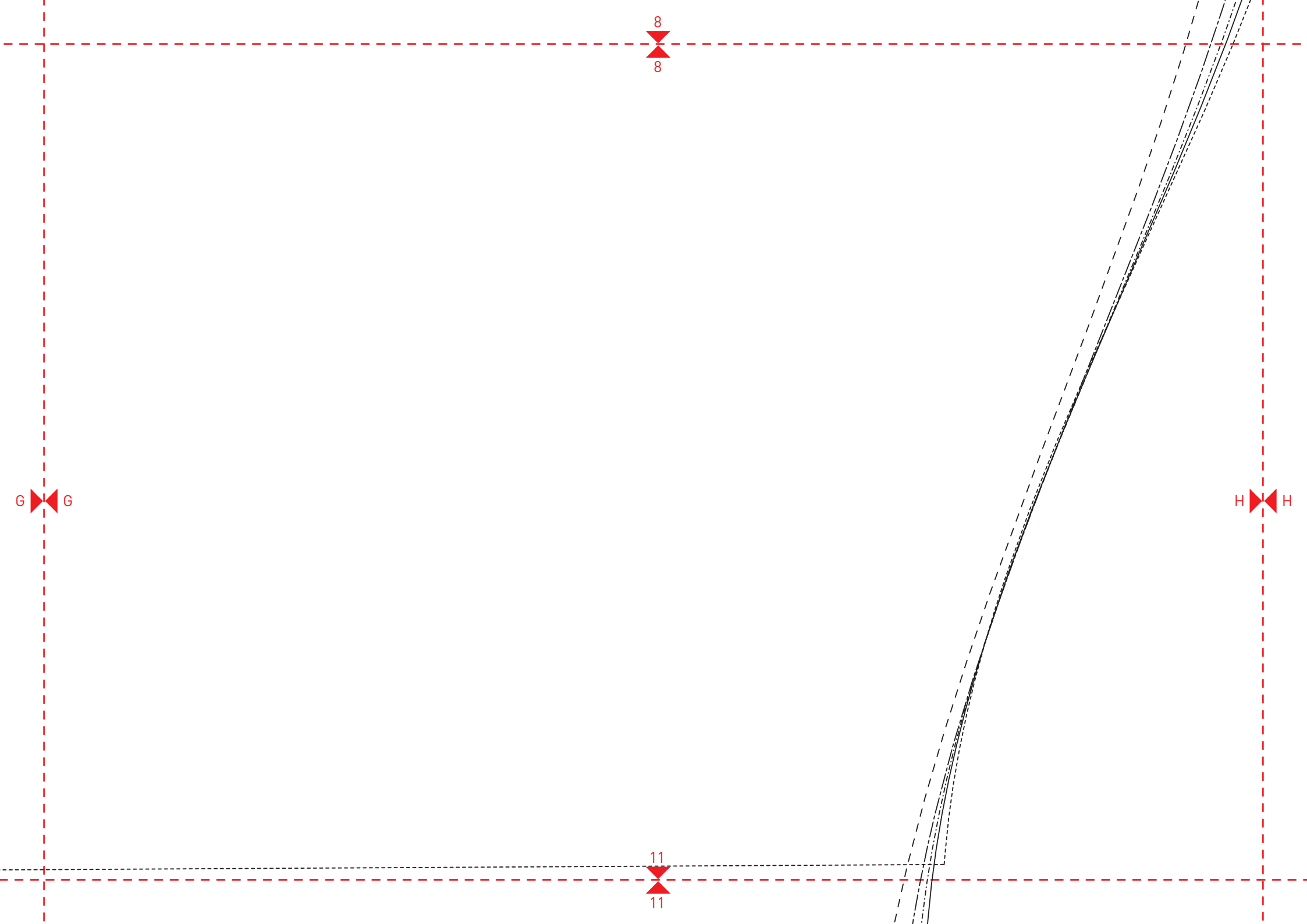
G G

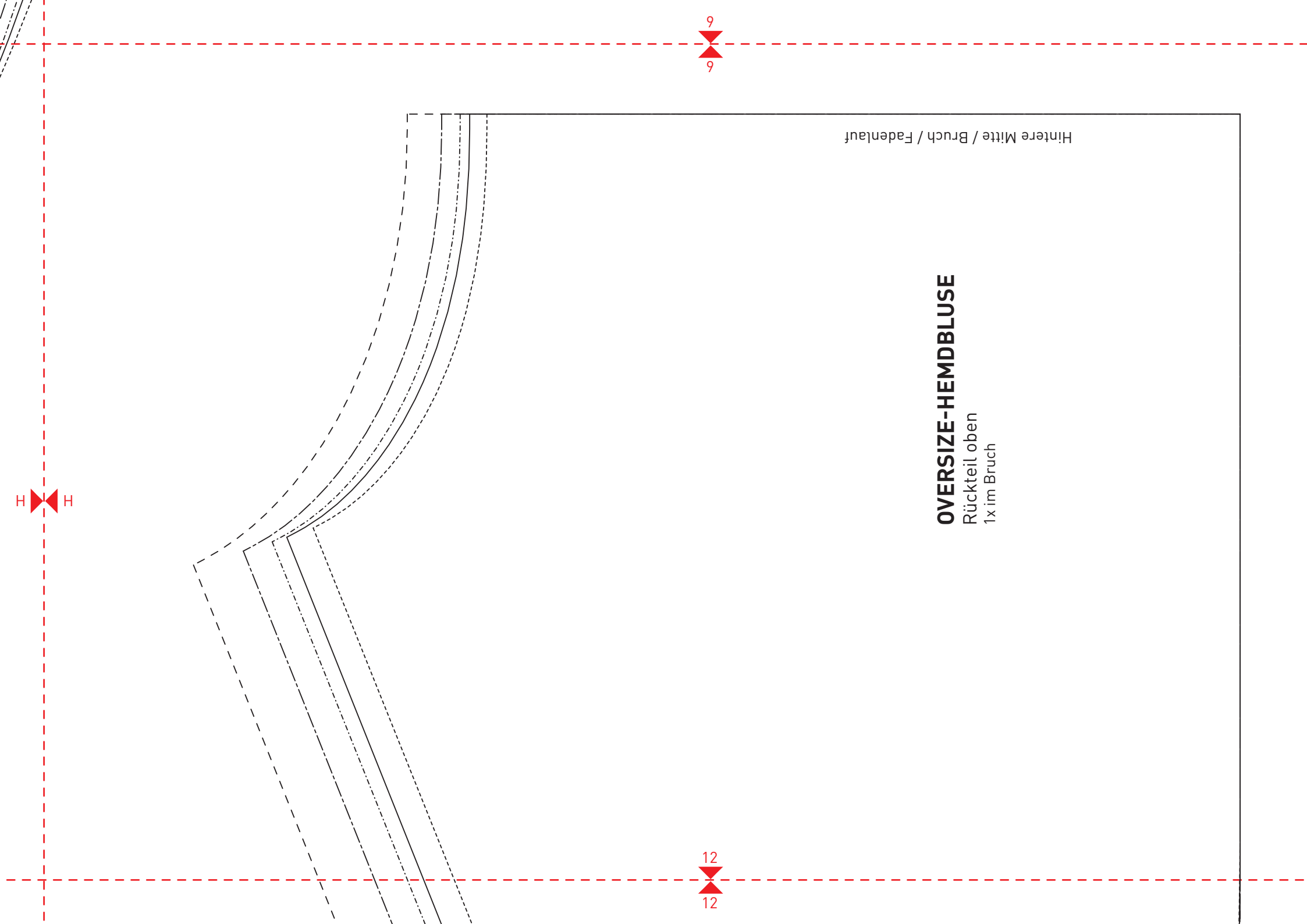
10  
10

37-36

38-40







Hintere Mitte / Bruch / Fadenlauf

**OVERSIZE-HEMDBLUSE**

Rückteil oben  
1x im Bruch

H

6

12

10

37-36

10

38-40

40-42

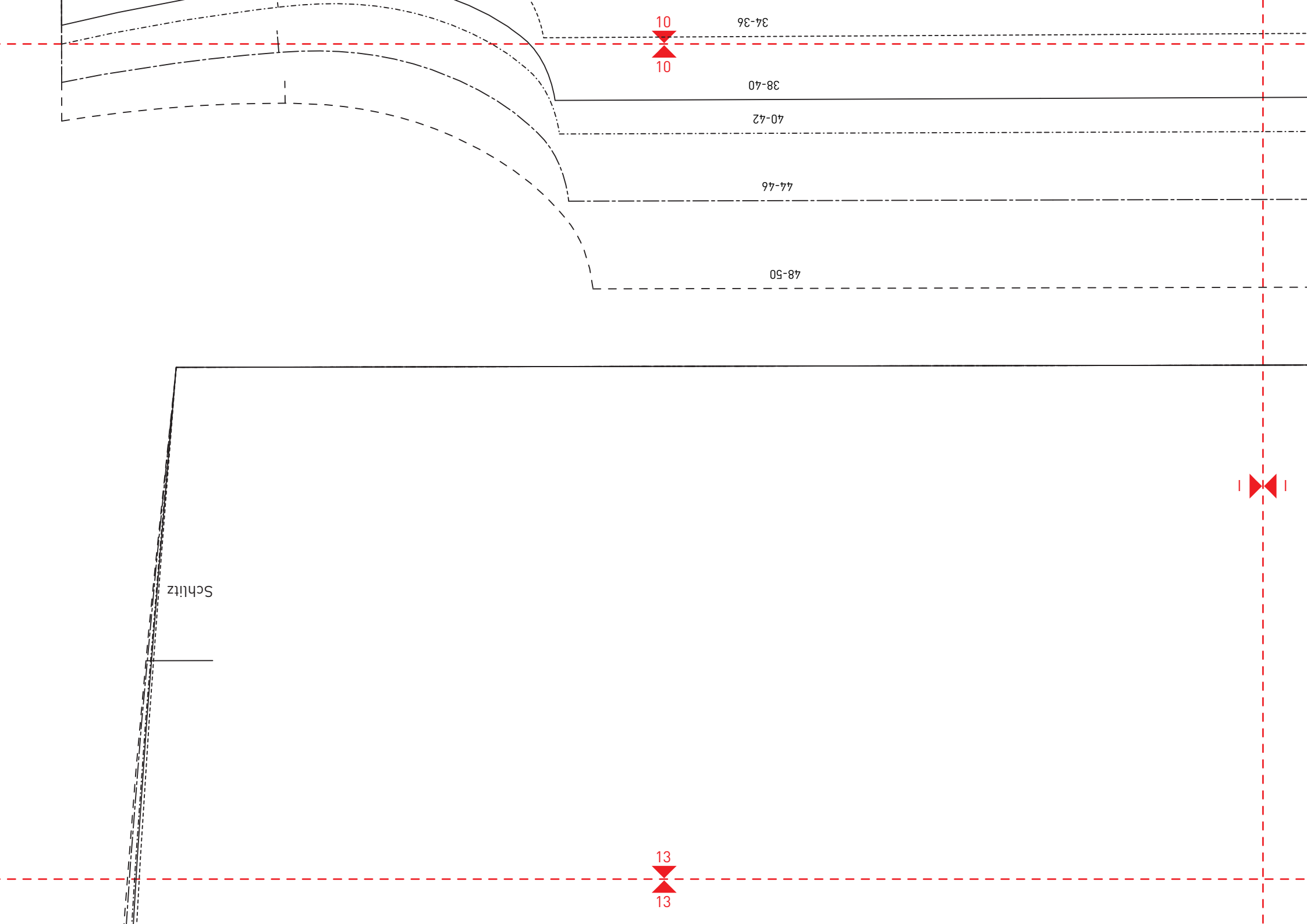
44-46

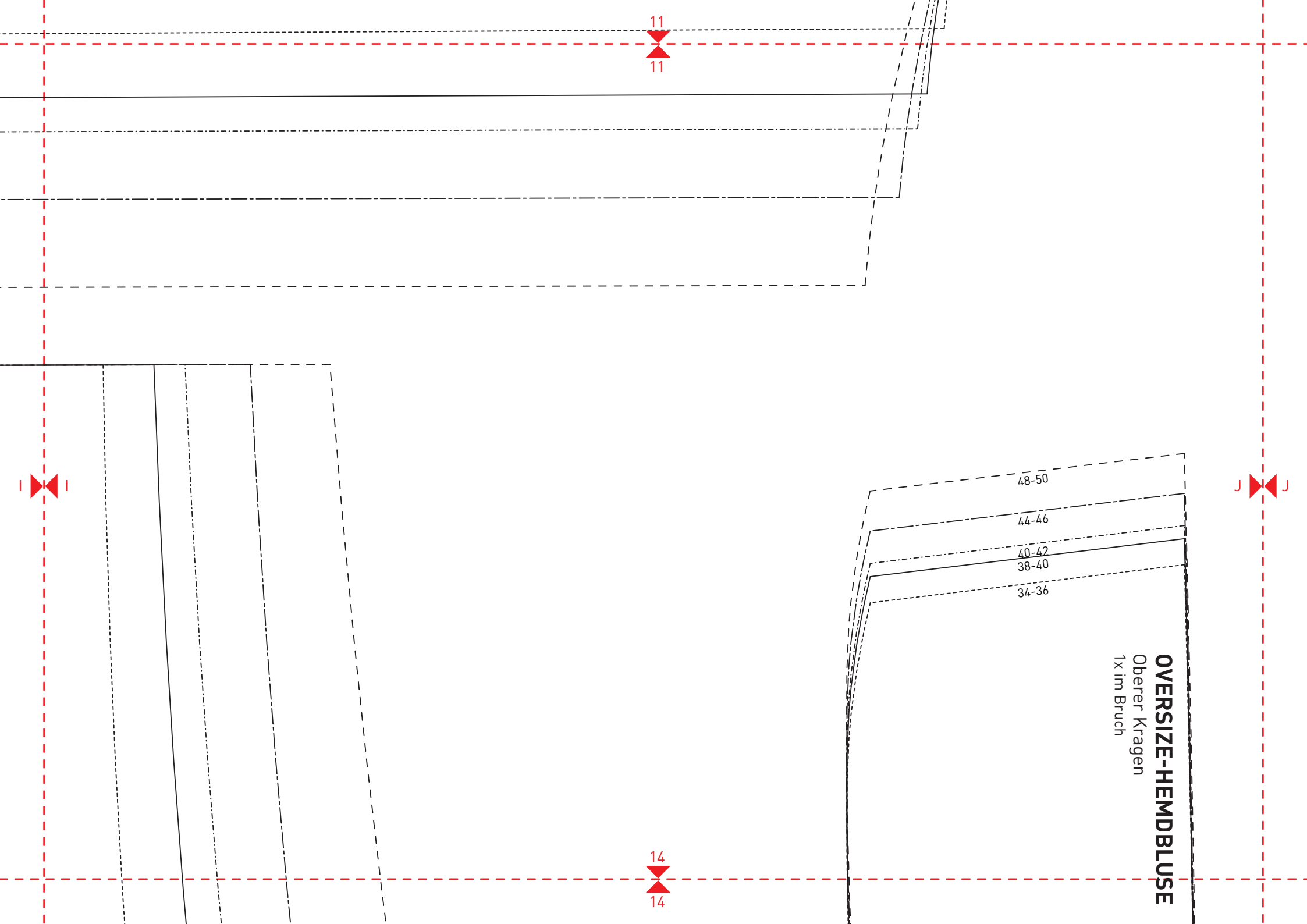
48-50

Schlitz

13

13





11



11



48-50

44-46

40-42

38-40

34-36

**OVERSIZE-HEMDBLUSE**  
Oberer Kragen  
1x im Bruch

14



14

12  
12

J J

48-50

44-46

40-42

38-40

34-36

34-36

38-40

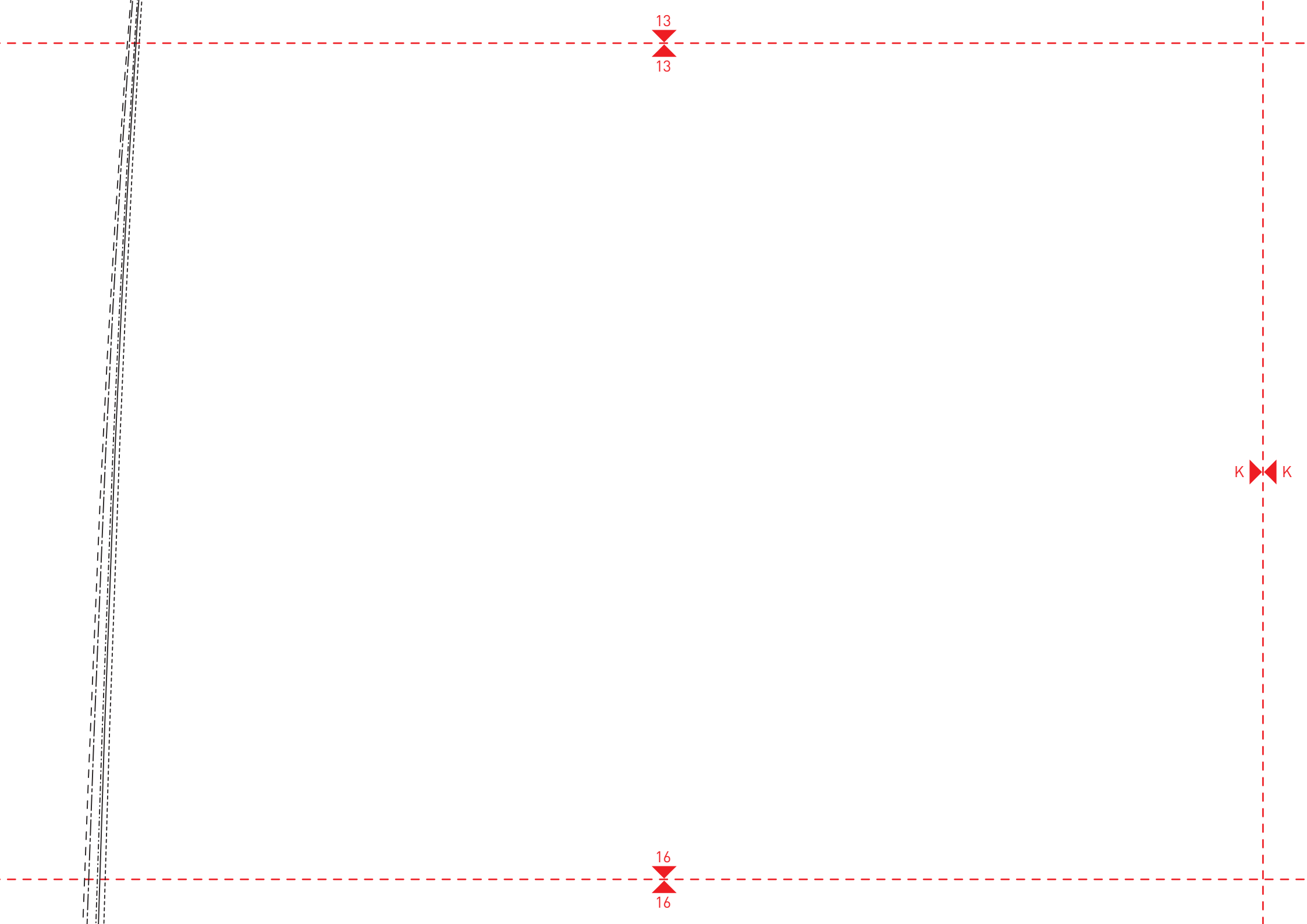
40-42

44-46

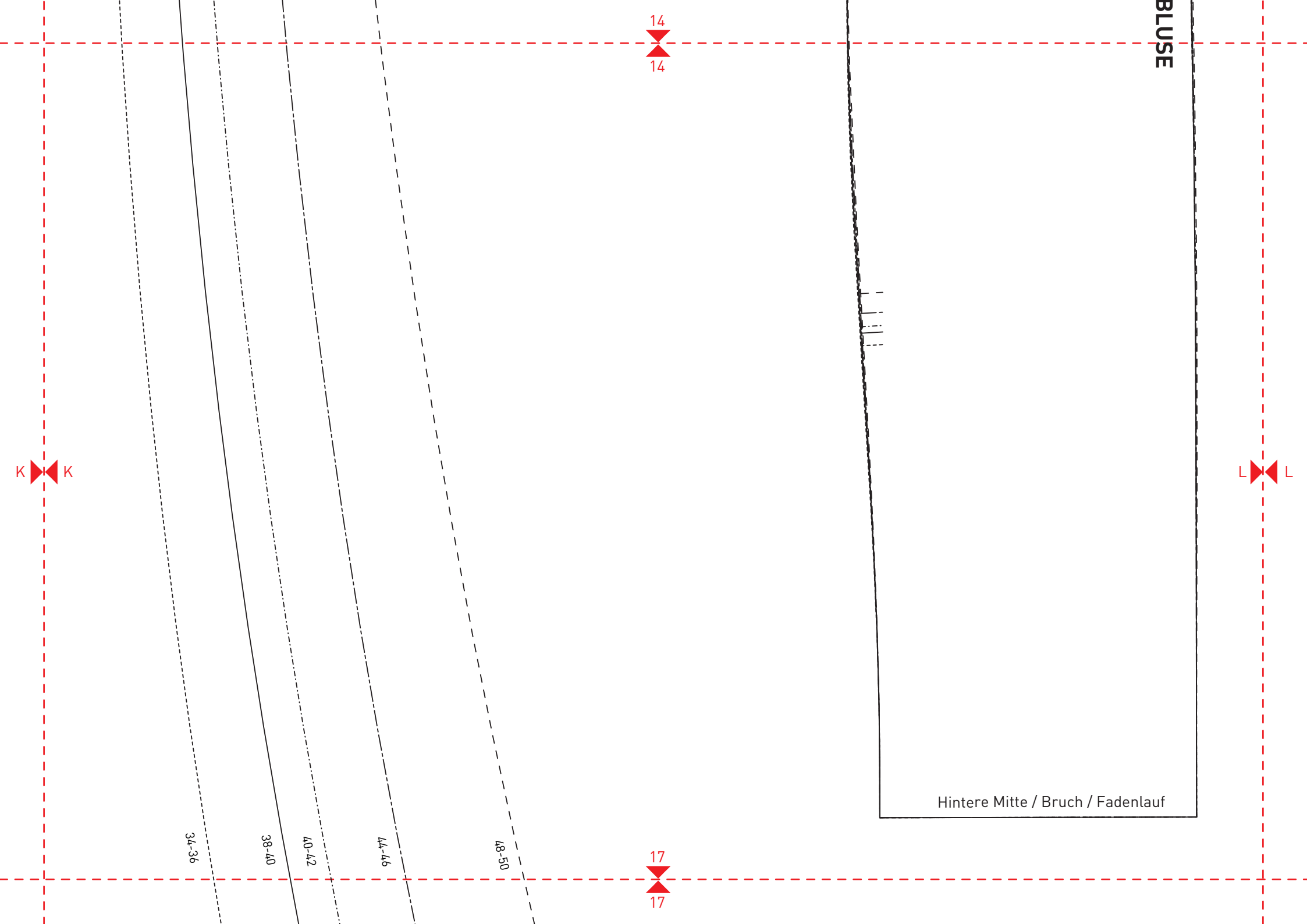
48-50

15  
15

**OVERSIZ**  
Unterer Kr  
1x im Bruch







BLUSE

14  
14

K K

L L

34-36

38-40

40-42

44-46

48-50

17  
17

Hintere Mitte / Bruch / Fadenlauf

**OVERSIZE-HEMDBLUSE**

Unterer Kragen  
1x im Bruch

Hnitere Mitte / Bruch / Fadenlauf

**OVERSIZE-HEMDBLUSE**

Brusttasche  
2x

Fadenlauf  
↓

15

15

18

18

34-42

44-50

L L

# OVERSIZE-HEMDBLUSE

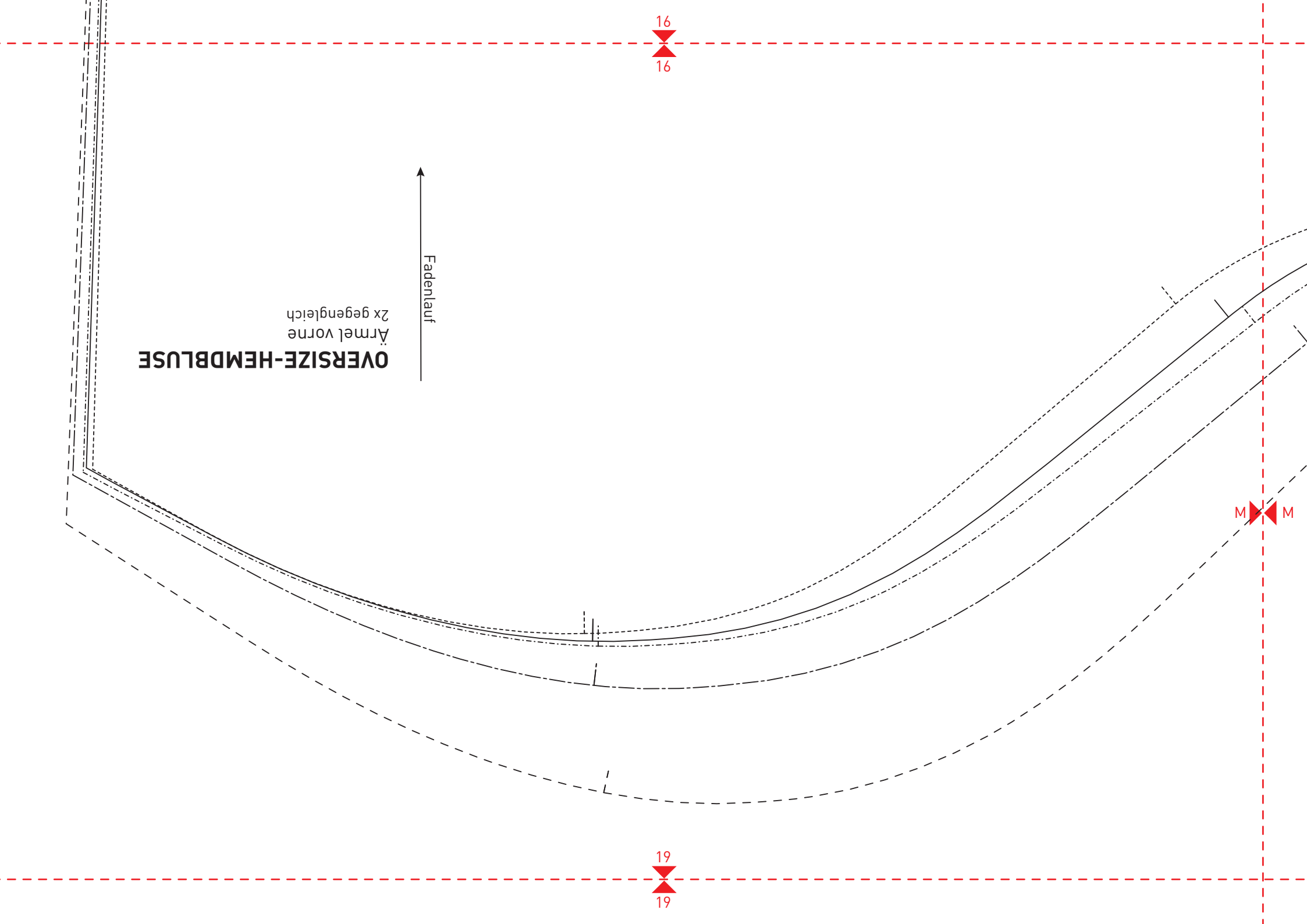
Ärmel vorne  
2x gegengleich

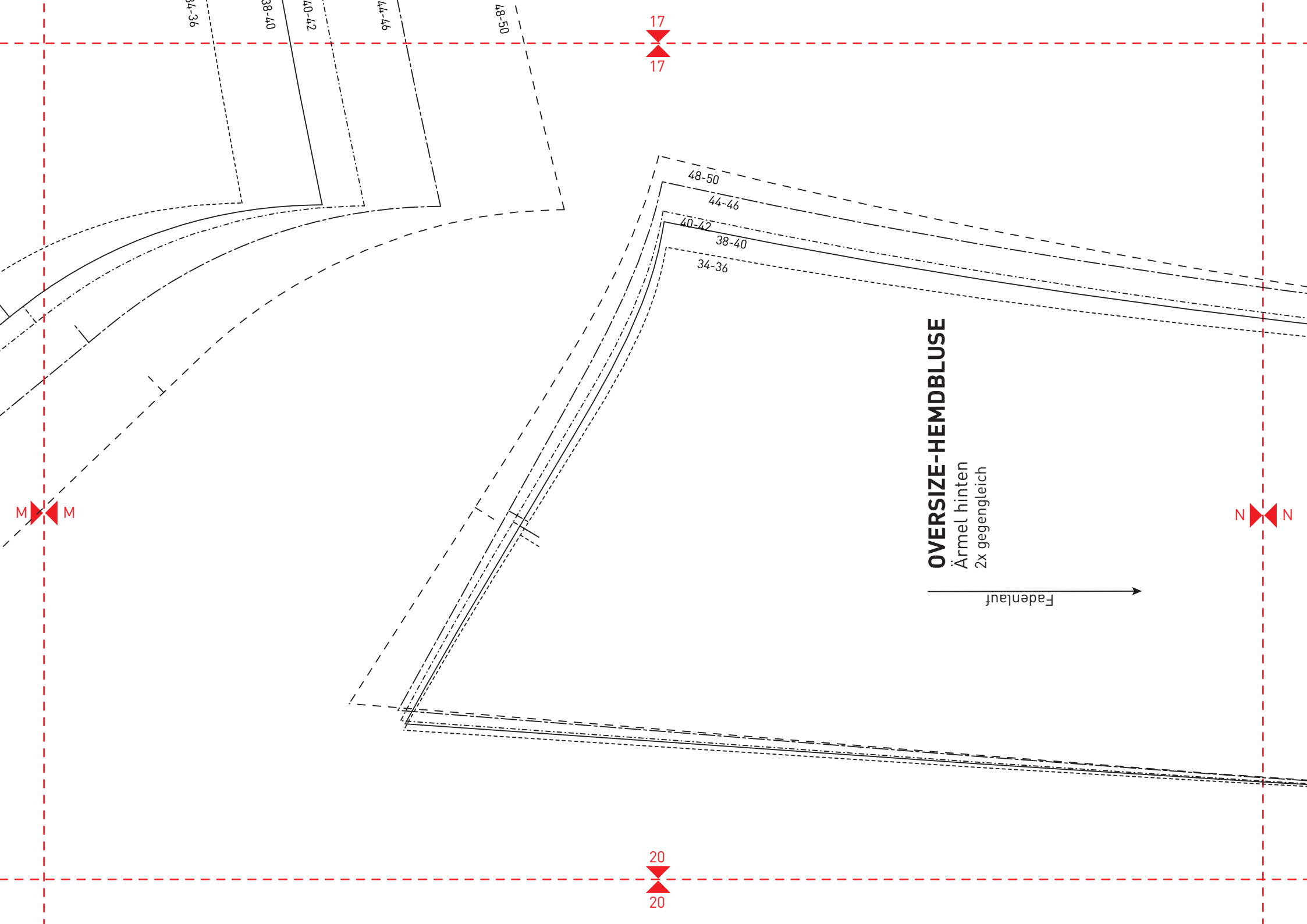
Fadenlauf ↑

16  
16

19  
19

M M





18

18

# OVERSIZE-HEMDBLUSE

Taschenklappe  
2x im Bruch

Fadenlauf



Bruch

34-42

44-50

N

21

21

