


HEJLENKI

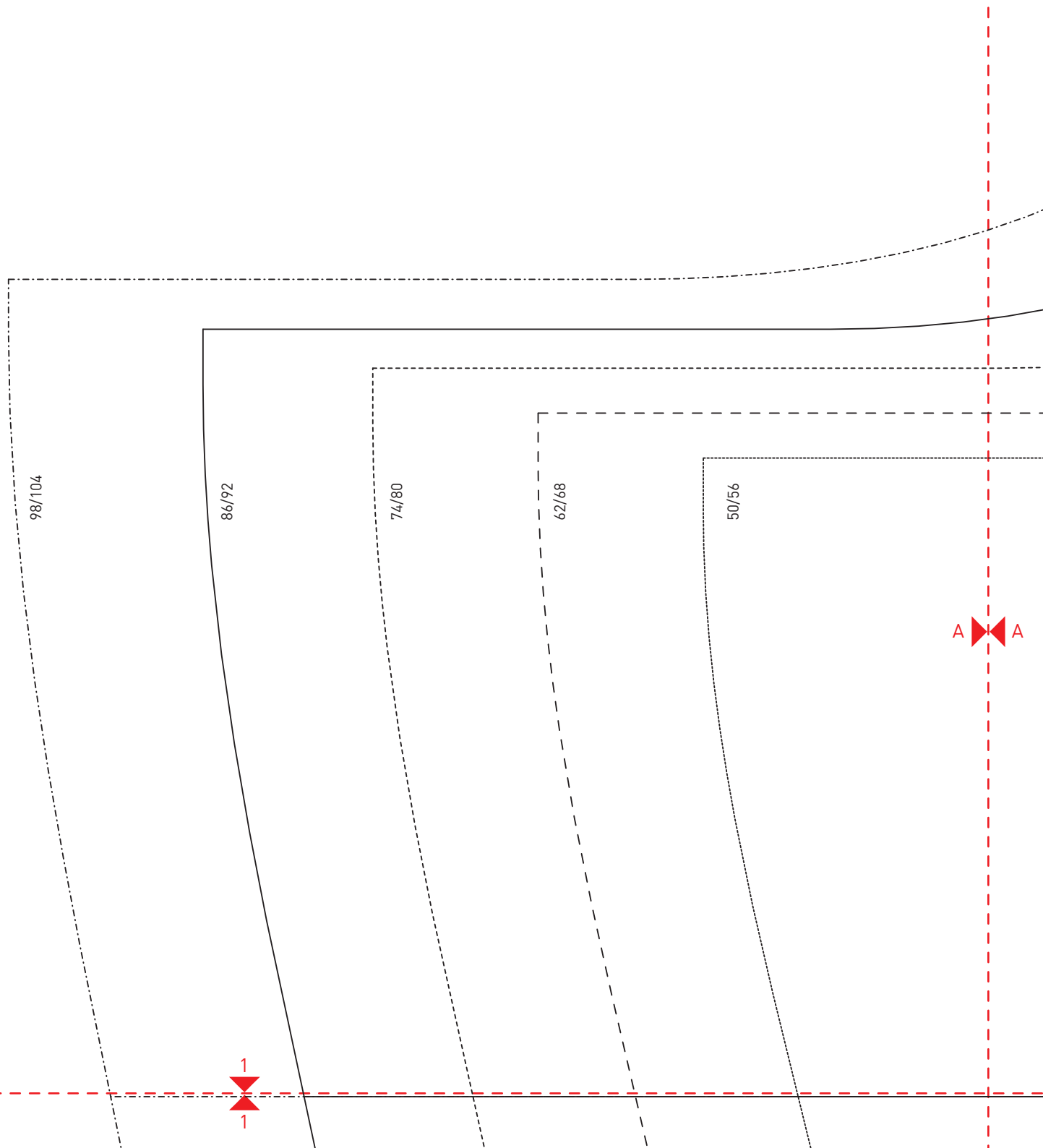
NÄHEN FÜR BABYS UND KLEINKINDER

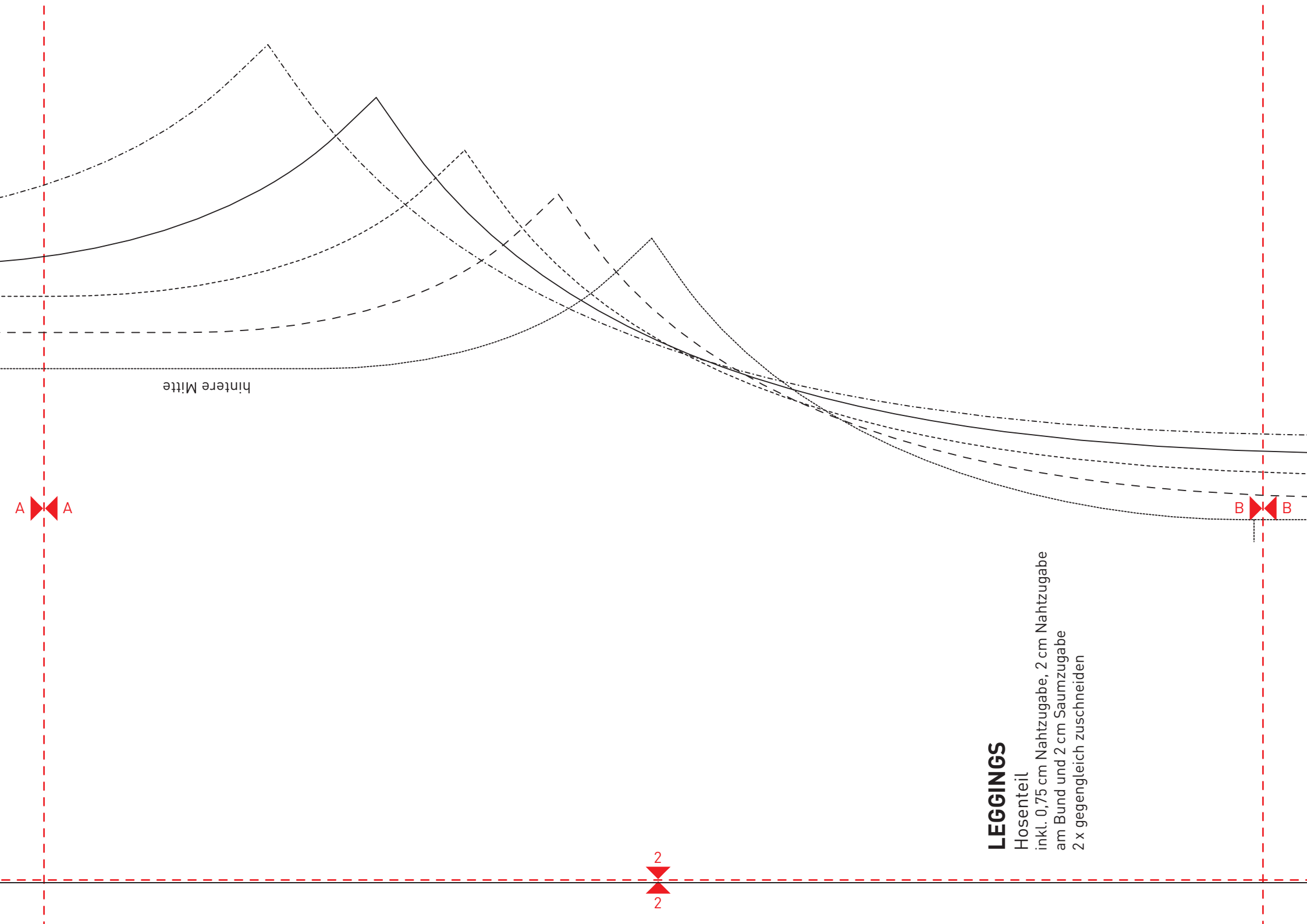
Alle Rechte bei © Edition Michael Fischer GmbH, Igling

LEGGINGS

Die Naht- und Saumzugaben sind enthalten.

 Kontrollquadrat
1cm x 1cm





hintere Mitte

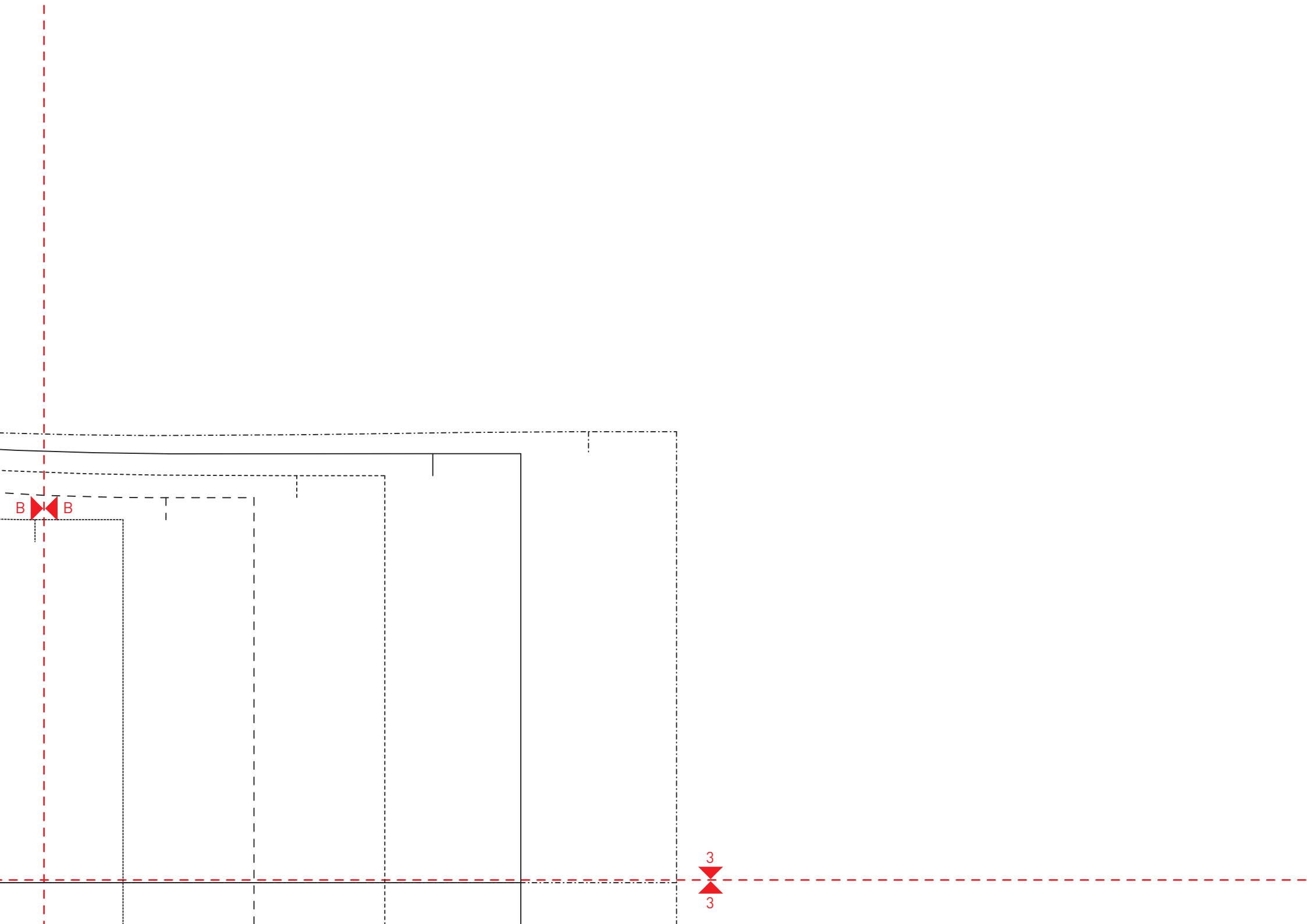
LEGGINGS

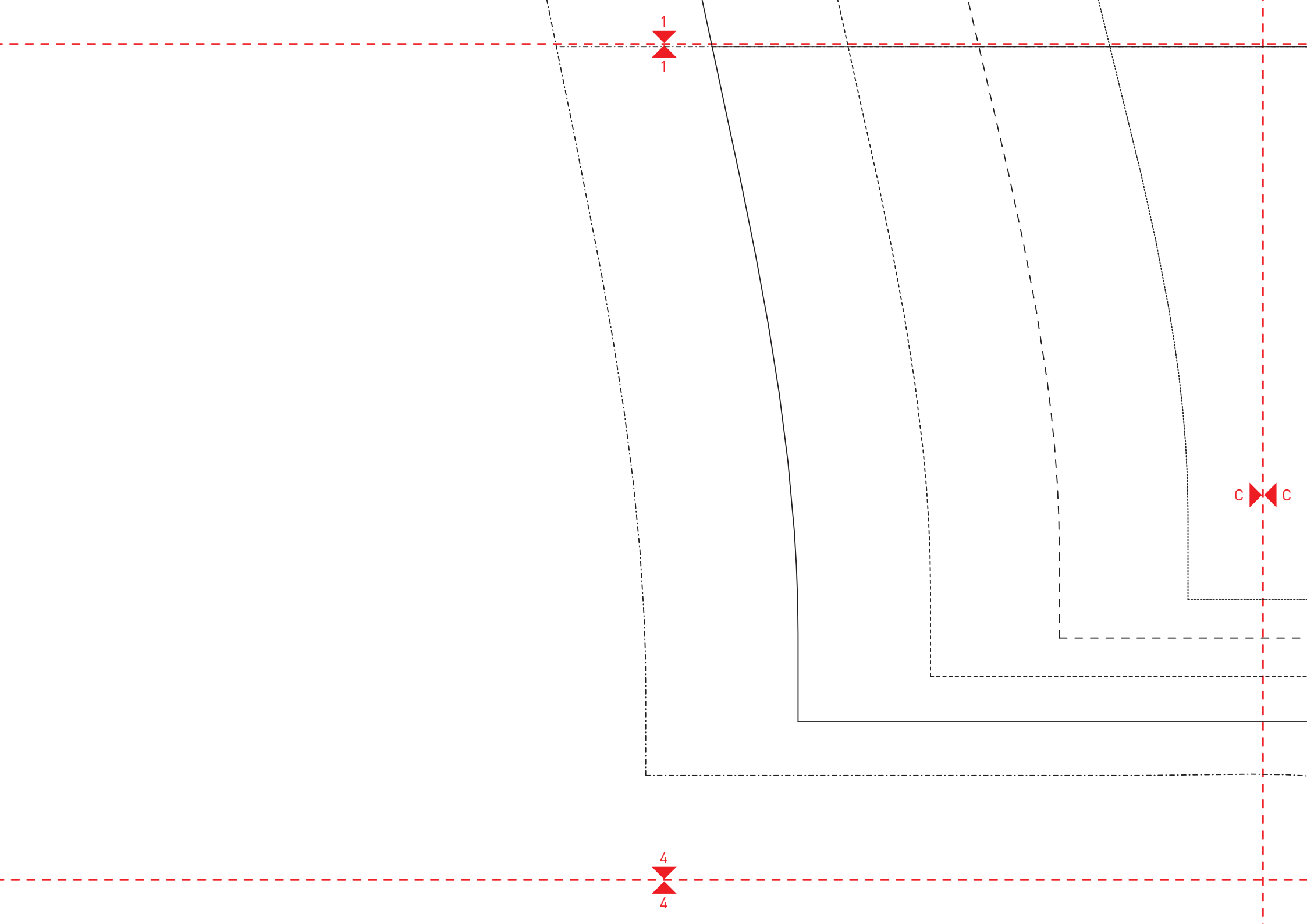
Hosenteil

inkl. 0,75 cm Nahtzugabe, 2 cm Nahtzugabe

am Bund und 2 cm Saumzugabe

2 x gegengleich zuschneiden





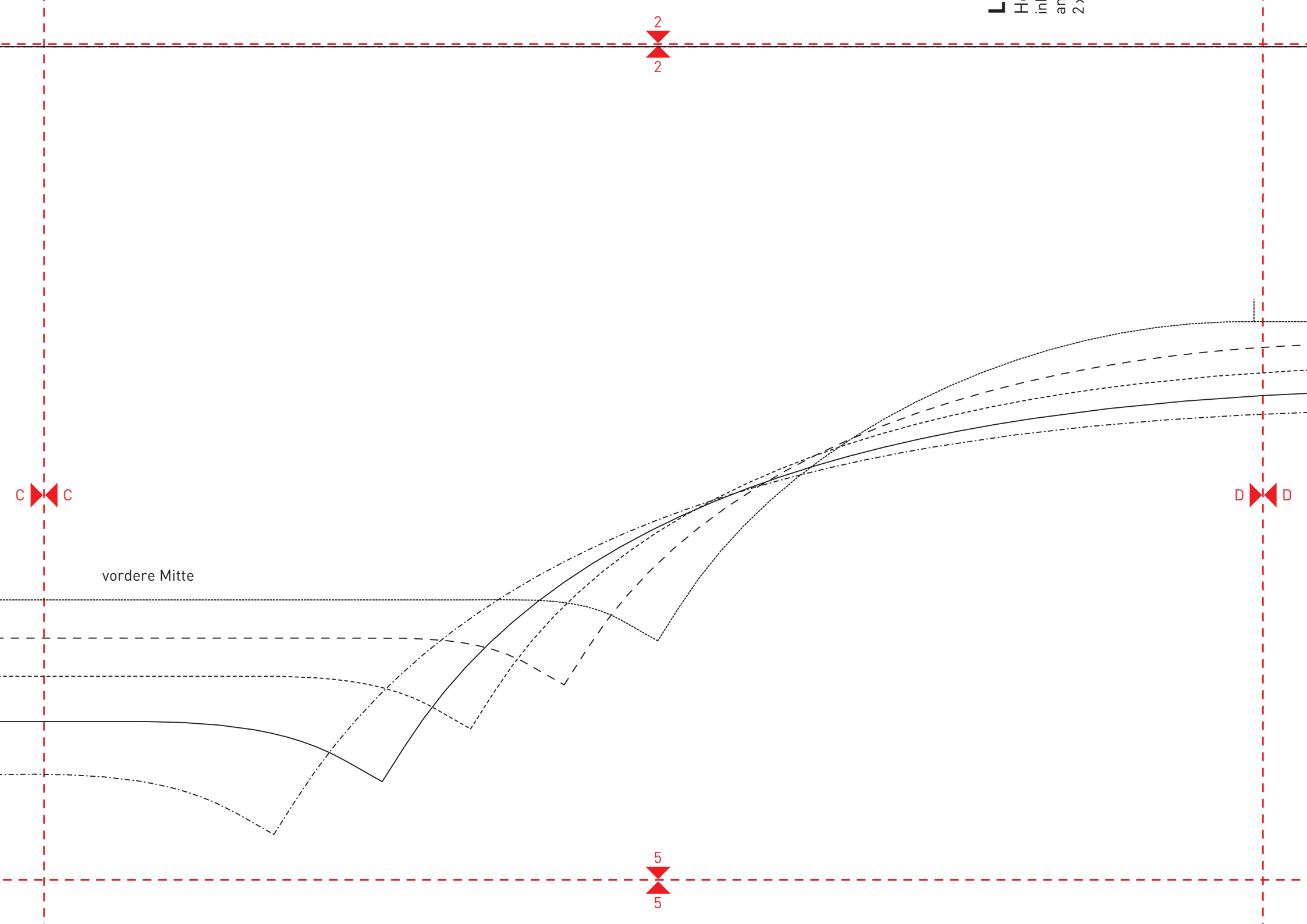
1

C

C

4

4



H in an 2

2
2

C C

D D

vordere Mitte

5
5

