



Diese Vorlage entstammt dem TOPP-Titel 27057

Sabine Schmidt

Näh doch einfach! Meine Lieblingshosen nähen mit SewSimple
ISBN 978-3-7358-7057-5

<https://www.topp-kreativ.de/naeh-doch-einfach-meine-lieblingshosen-naehen>

BREE
BUND

Vordere Mitte/Stoffbruch/Fadenlauf



SewSimple (SPIEGEL Bestseller Autorin)

me-lieblingshosen-naehen-mit-sewsimple-27057

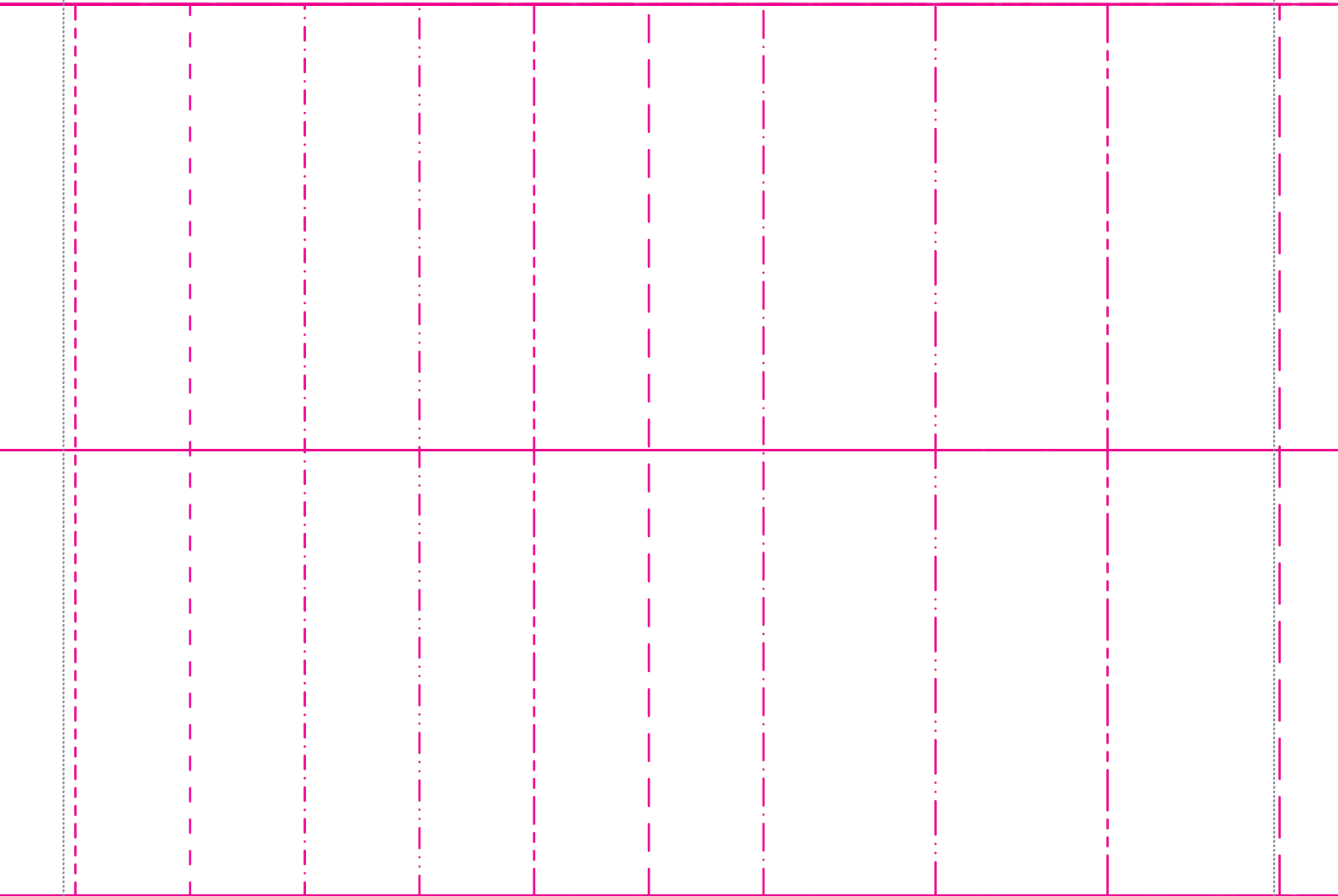
Umbruch

3

Schnittmuster ohne Grössenanpassung, d.h. in tatsächlicher Grösse, ausdrucken.

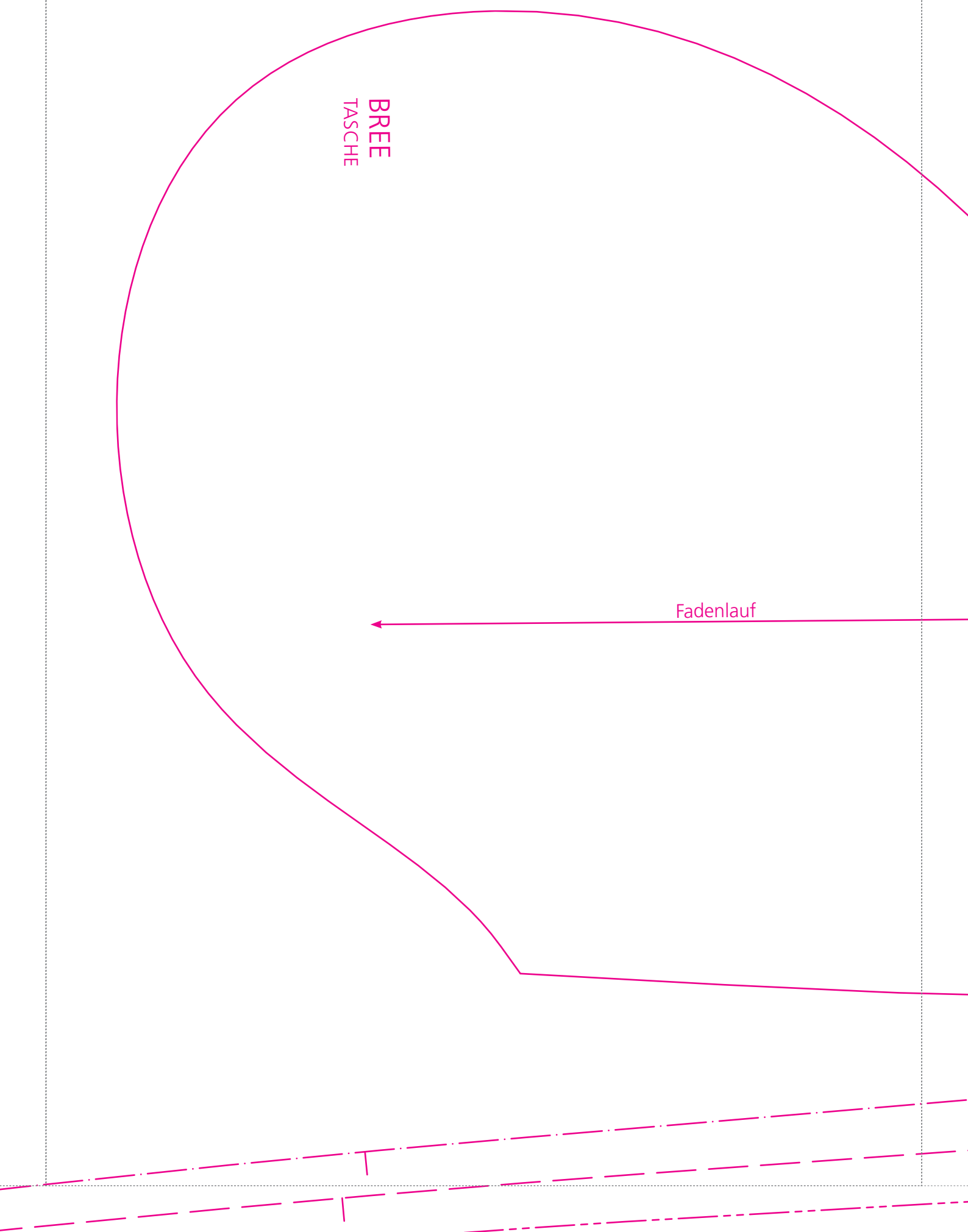
Grösse anhand des Kontrollquadrates auf Seite 13 kontrollieren.

Entlang der gestrichelten Linien zusammenkleben gemäss Legeplan auf Seite 19.

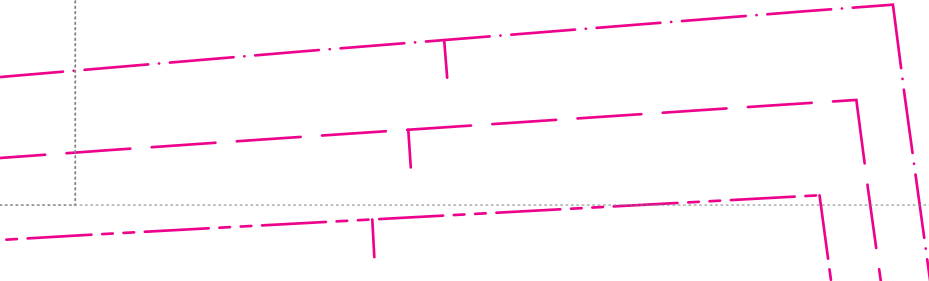


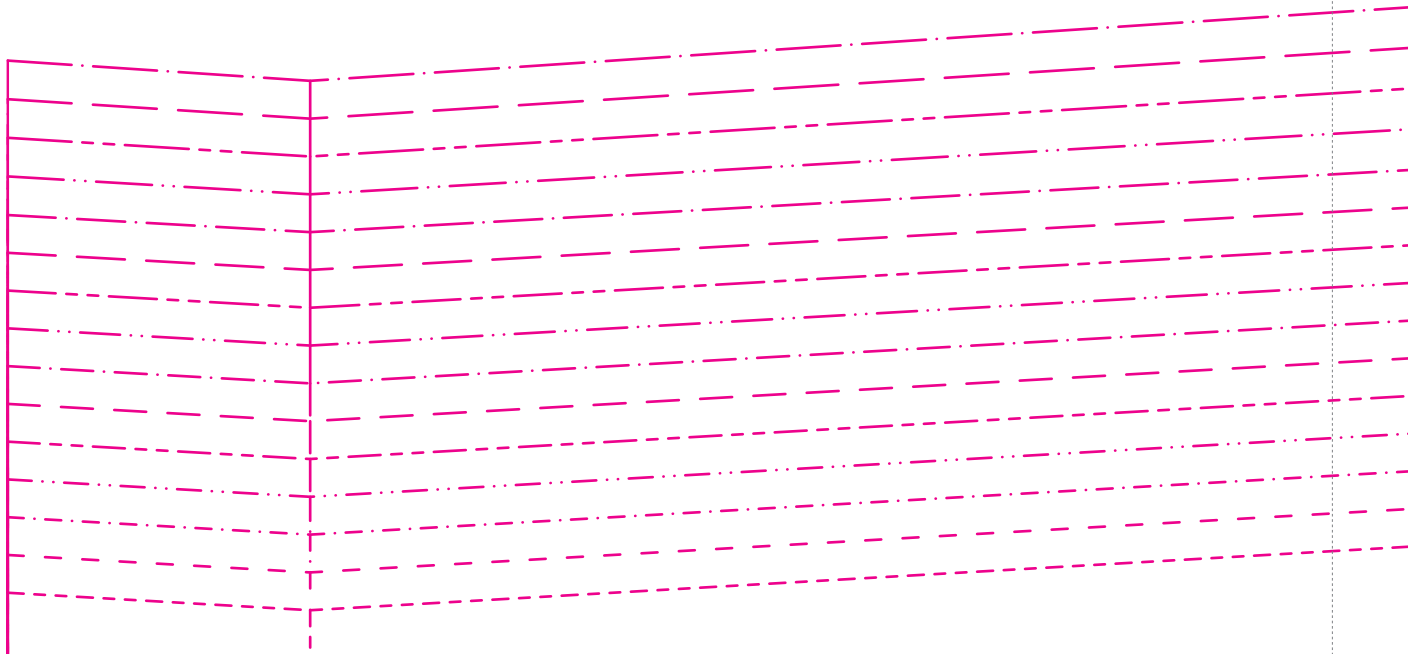
BREE
TASCHE

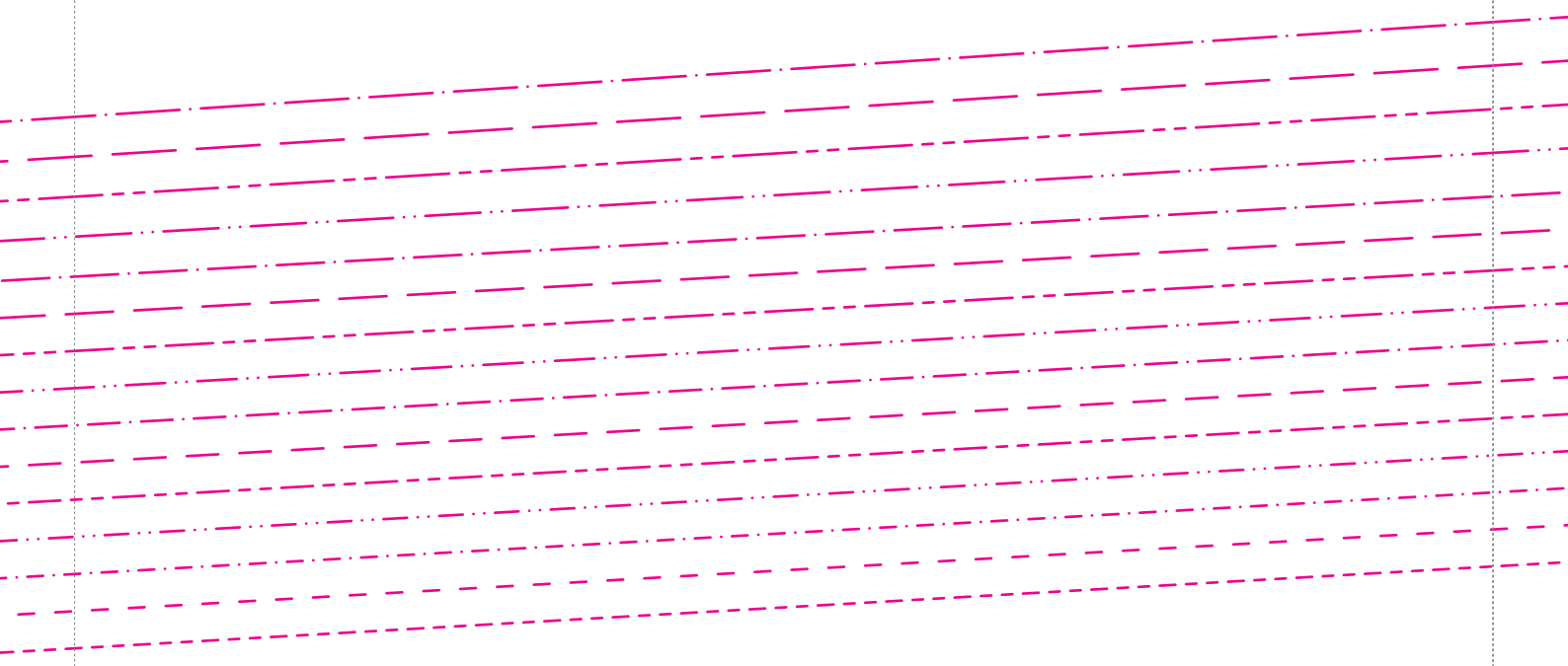
Fadenlauf

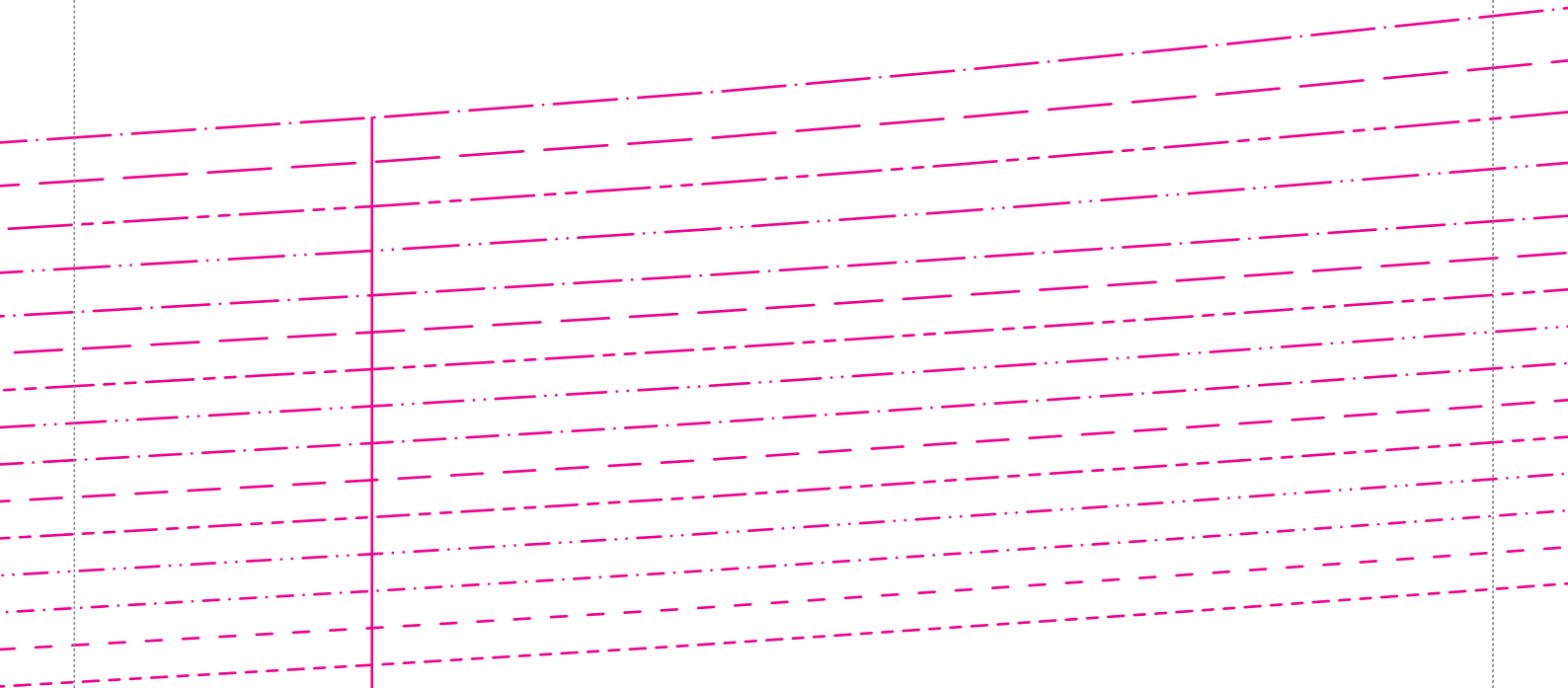


32	-----	42	- - - -	52	— · —
34	- - - -	44	— · — ·	54	— · —
36	-----	46	— · — ·	56	— · —
38	— · — ·	48	— · — ·	58	— · —
40	— · — ·	50	— · —	60	— · —



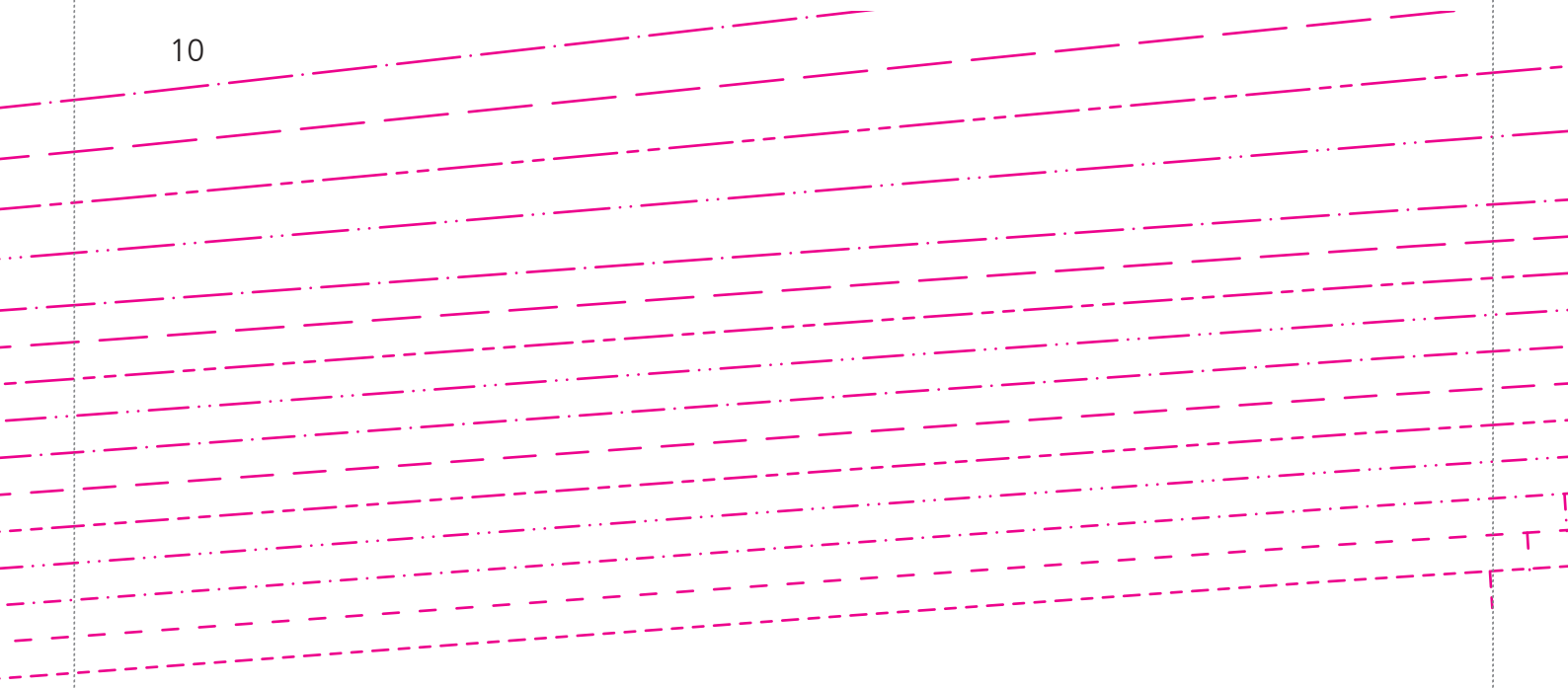


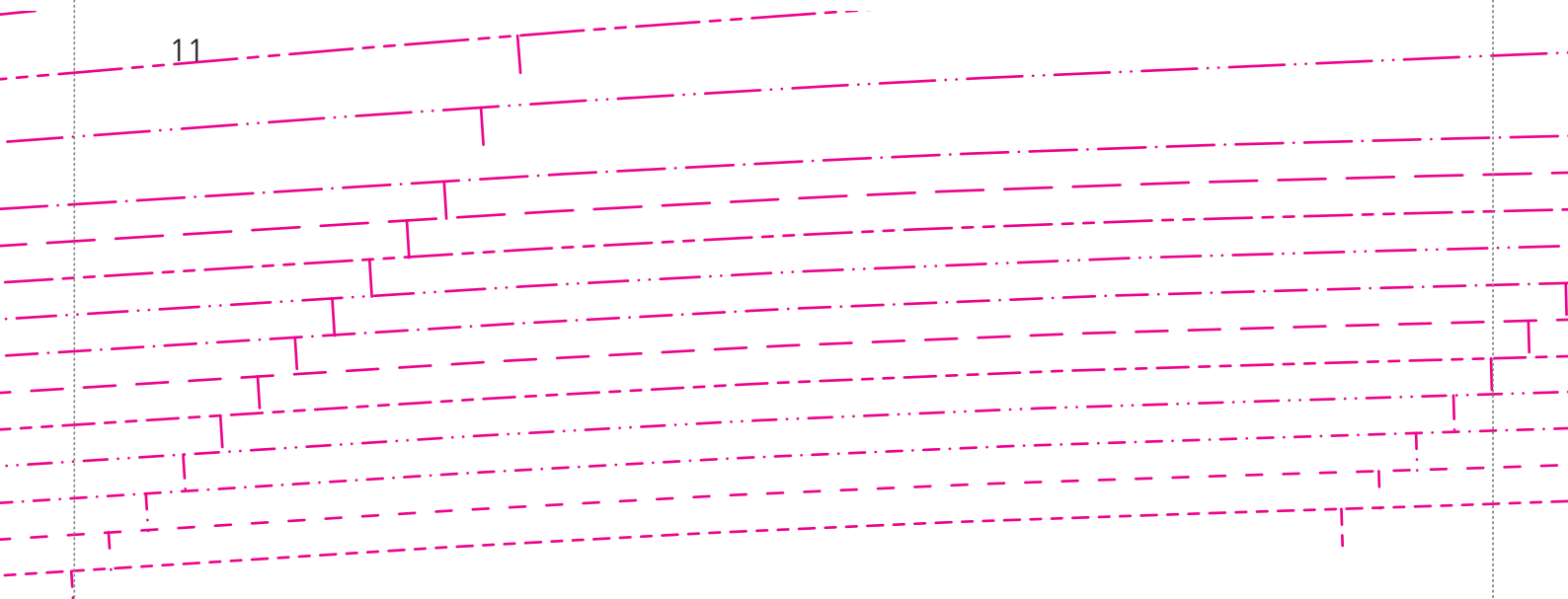


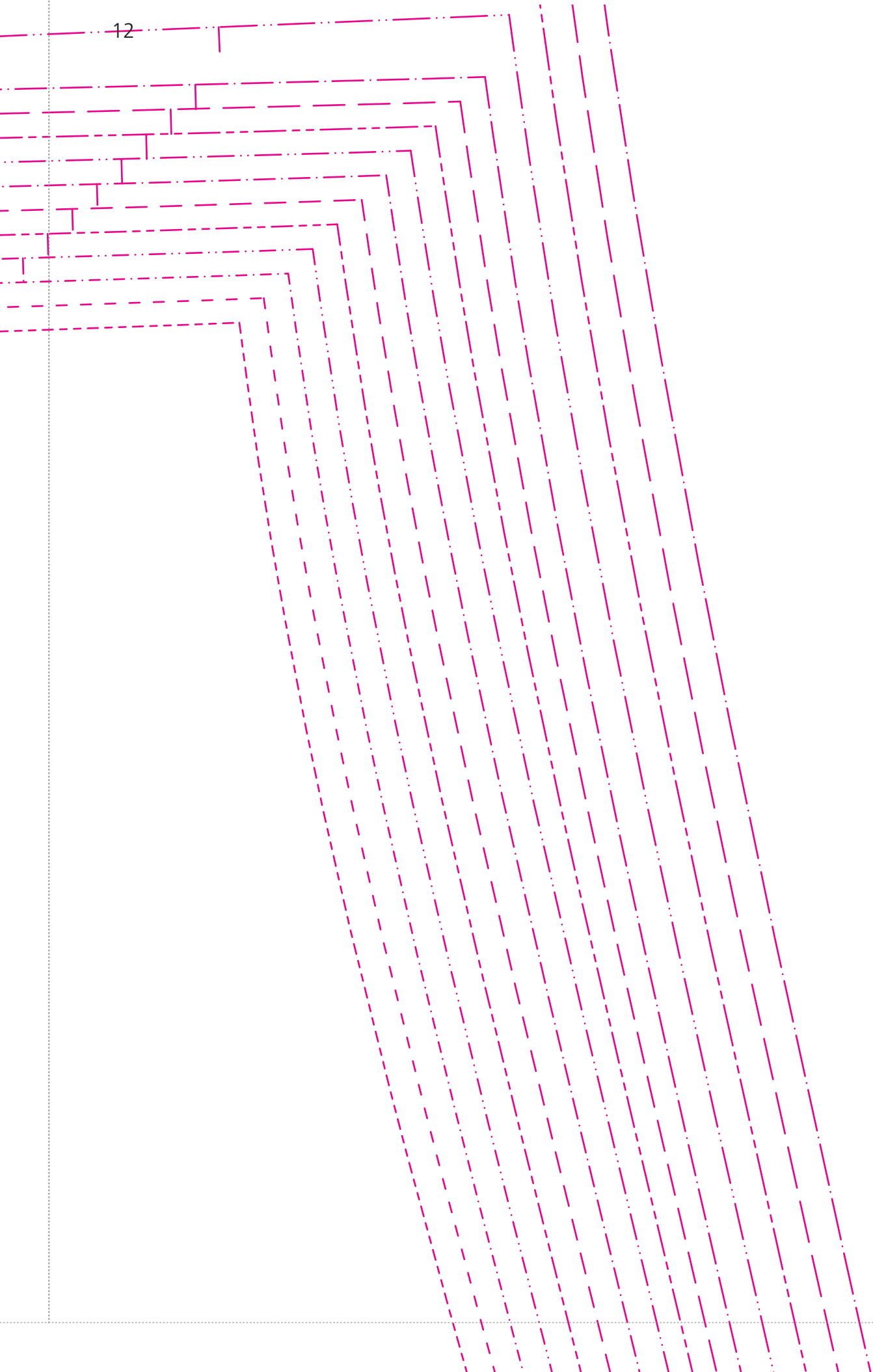


Fadenlauf

hier verlängern/kürzen

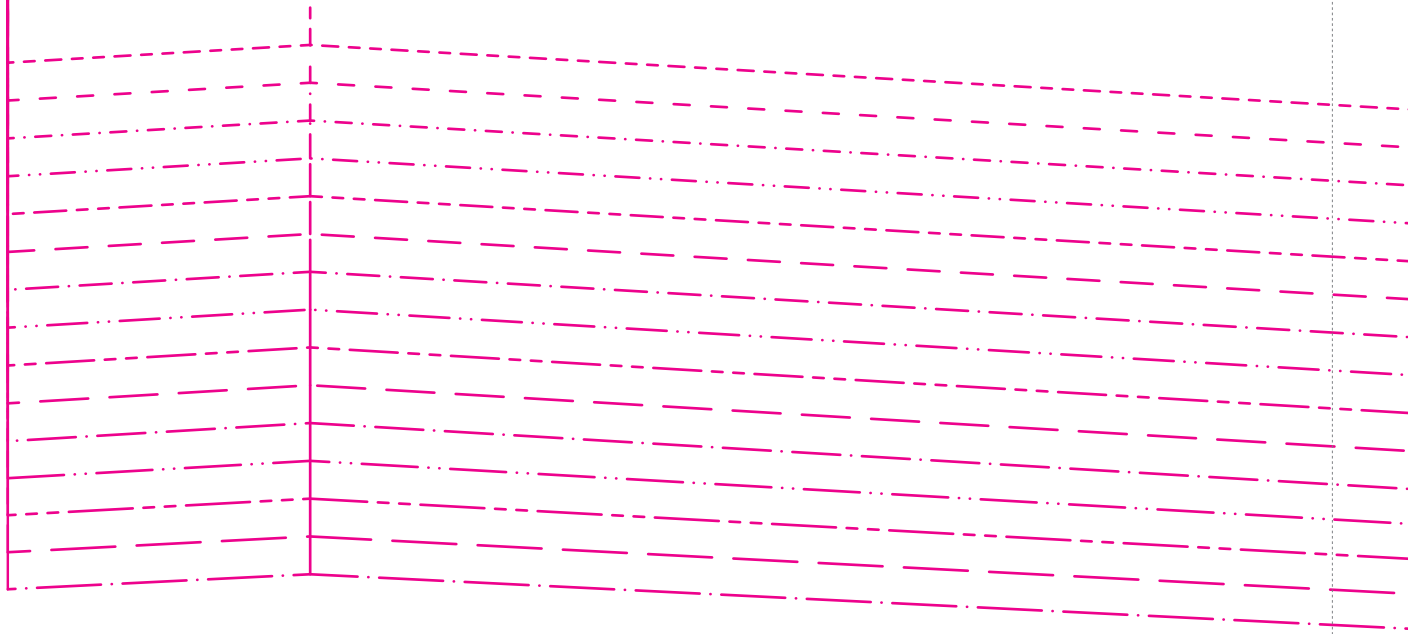






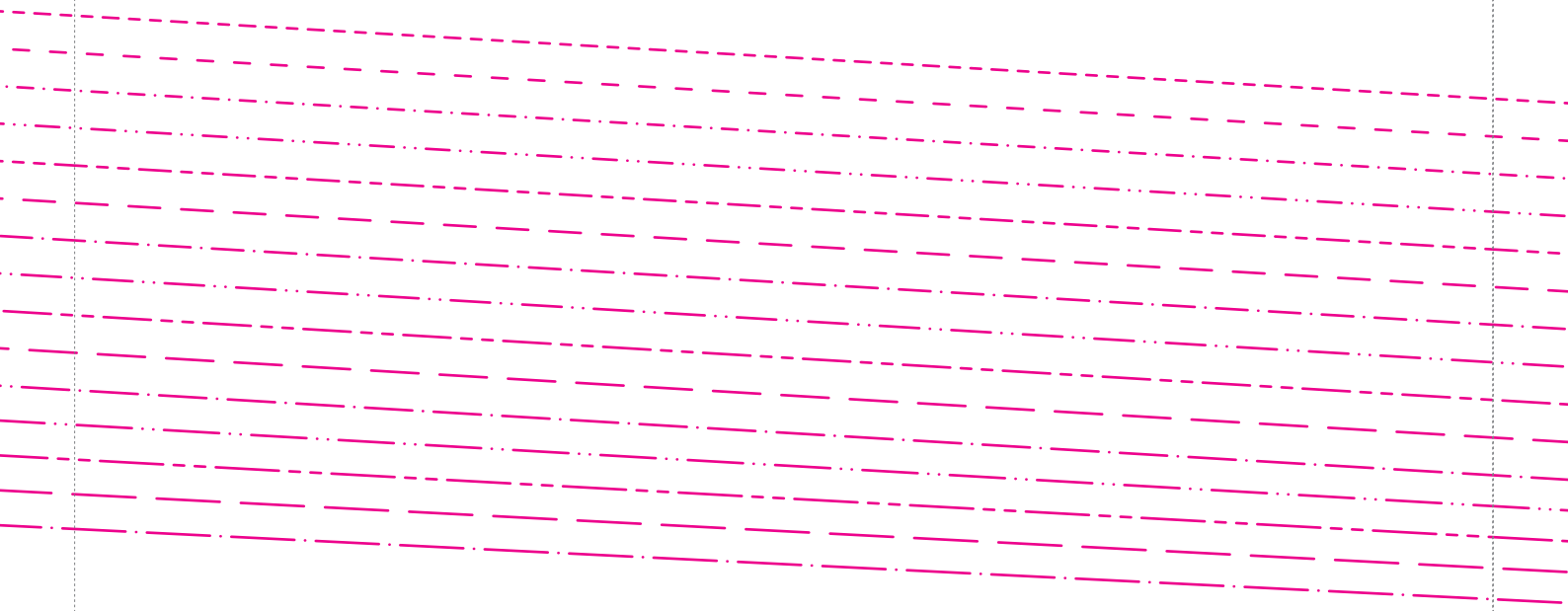
13

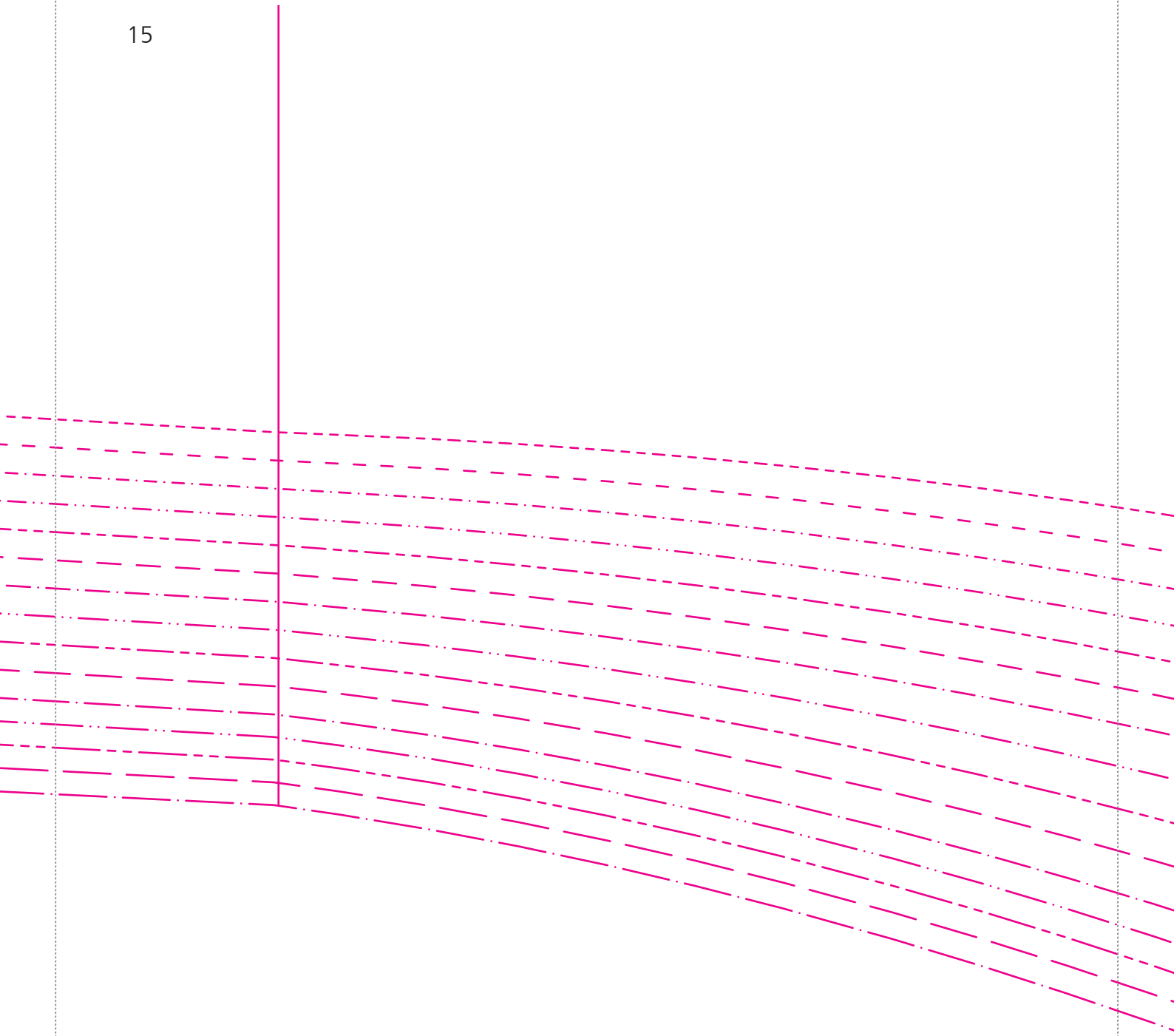
BREE
HINTERHOSE

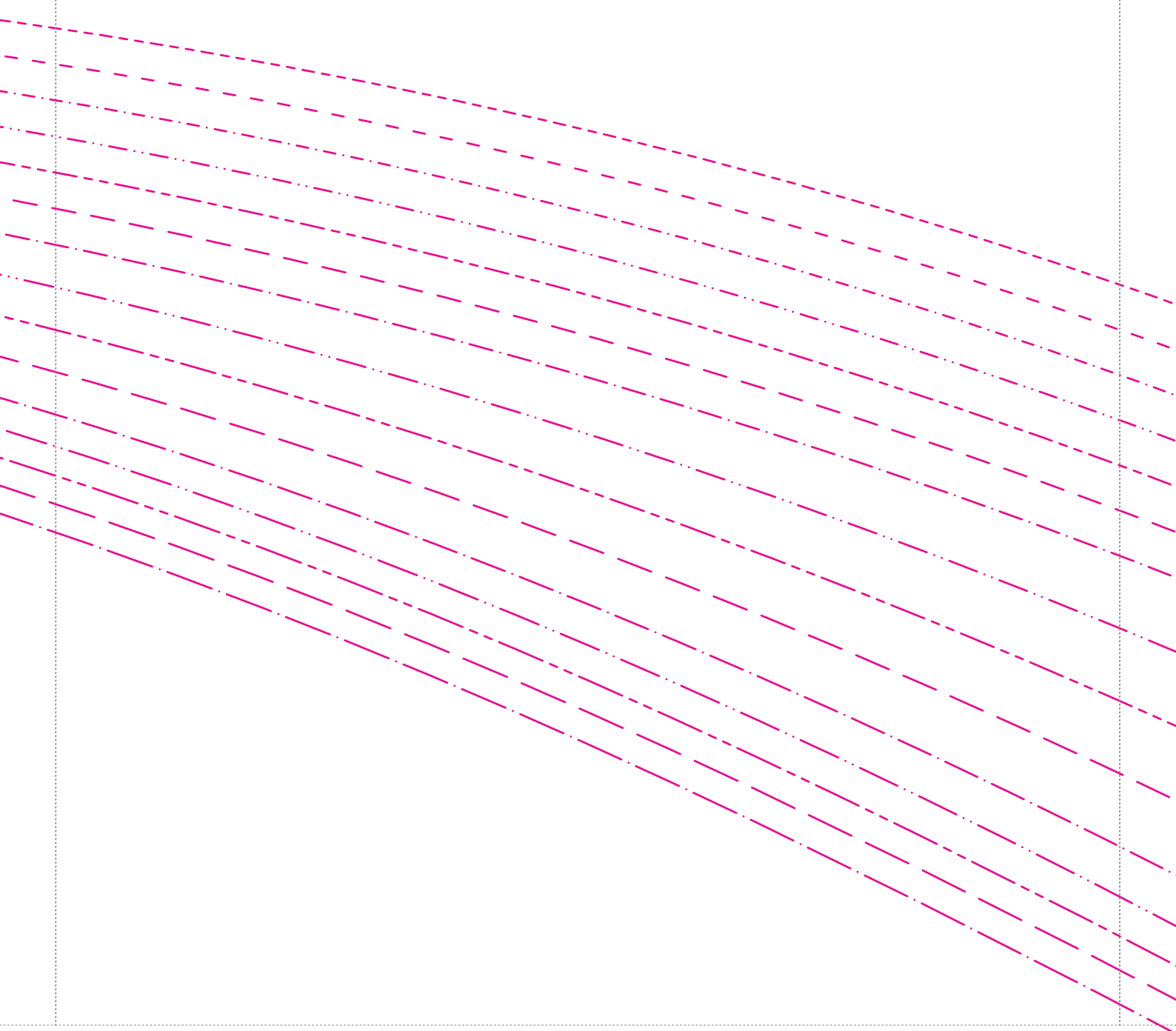


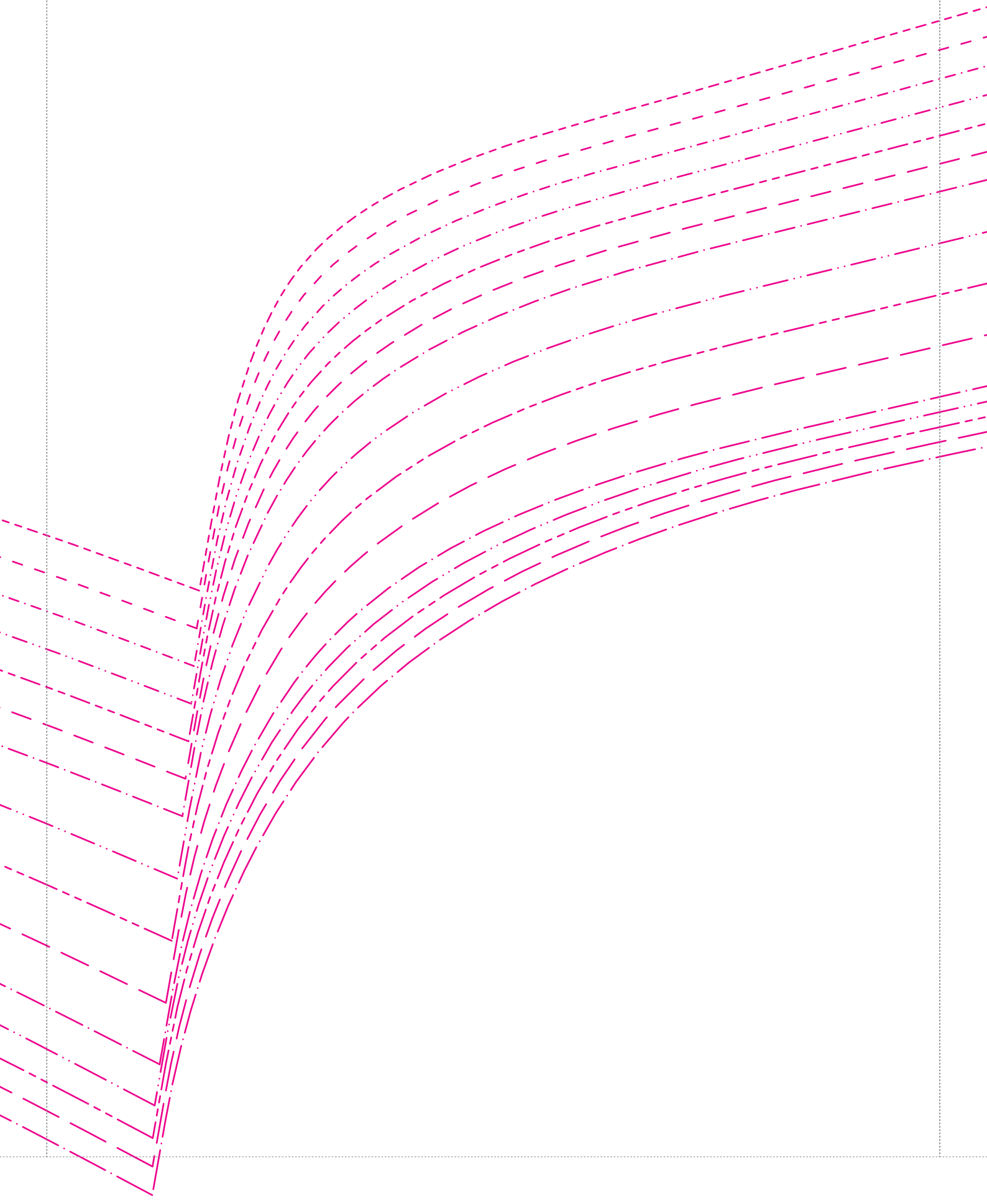
Kontrollquadrat
10 x 10 cm

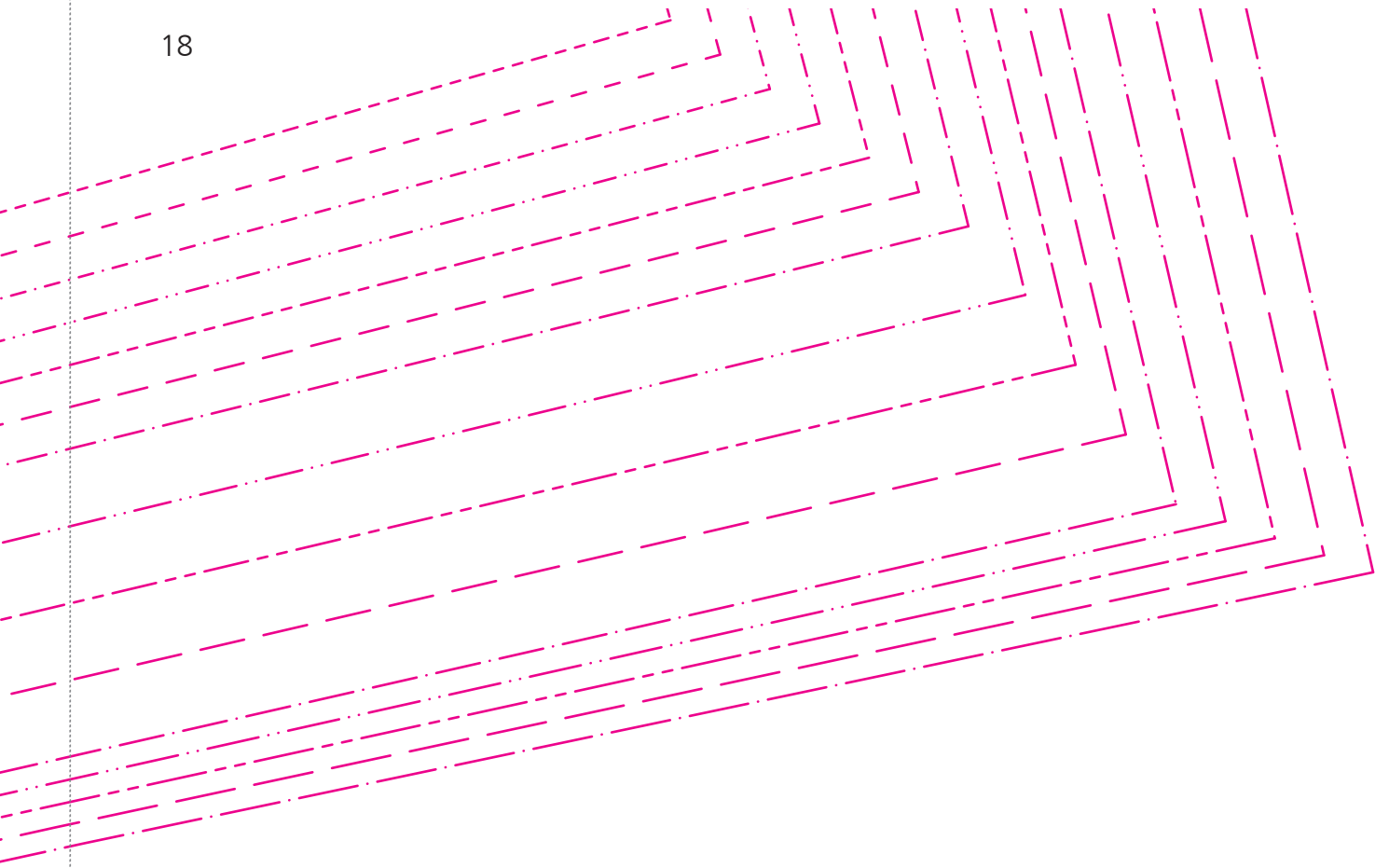


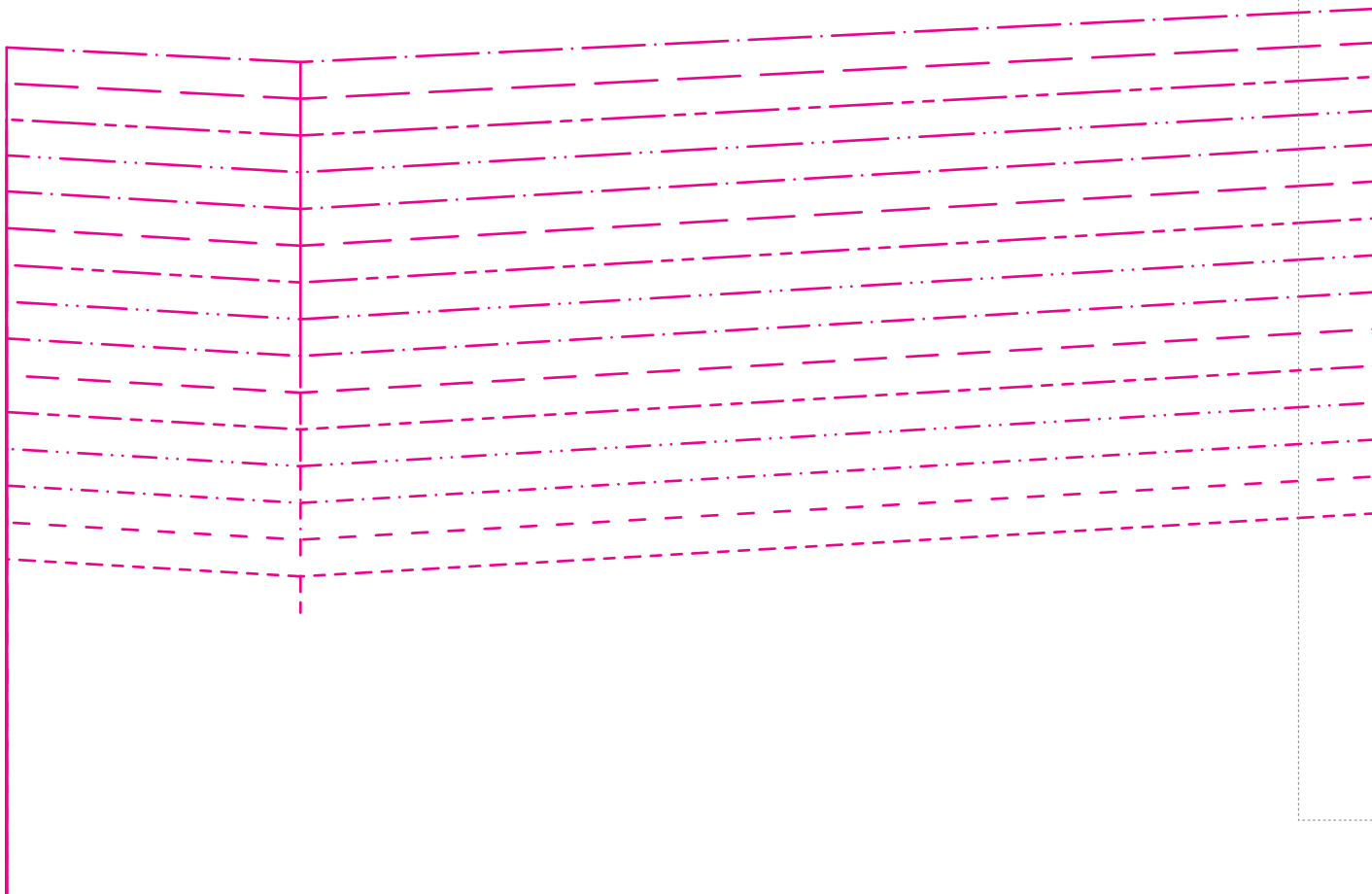
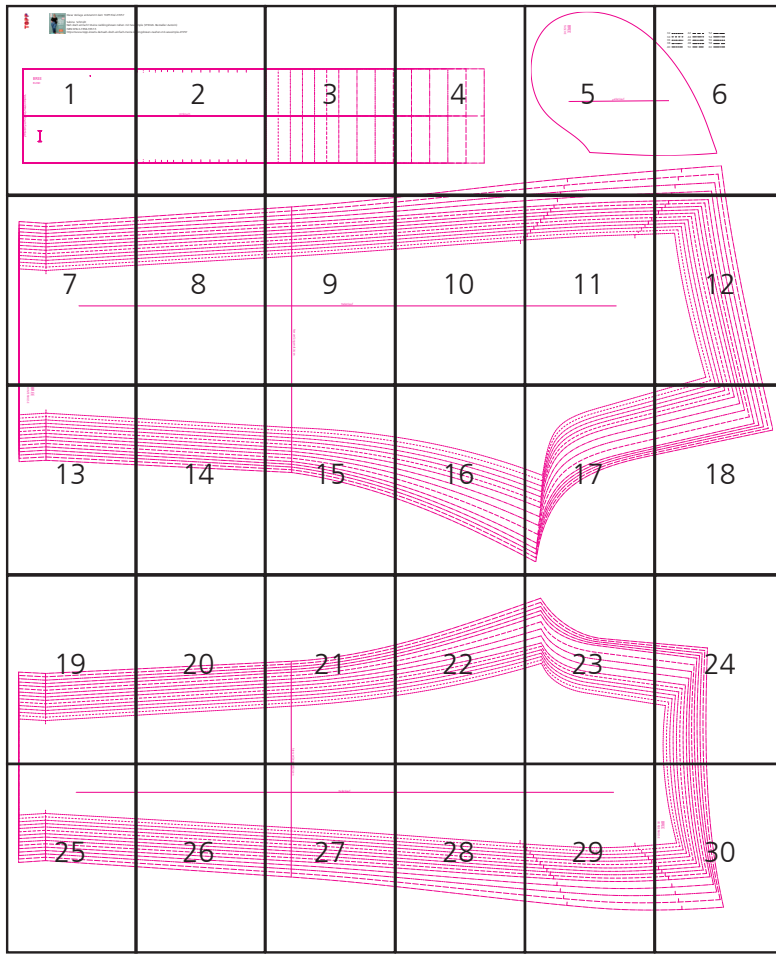


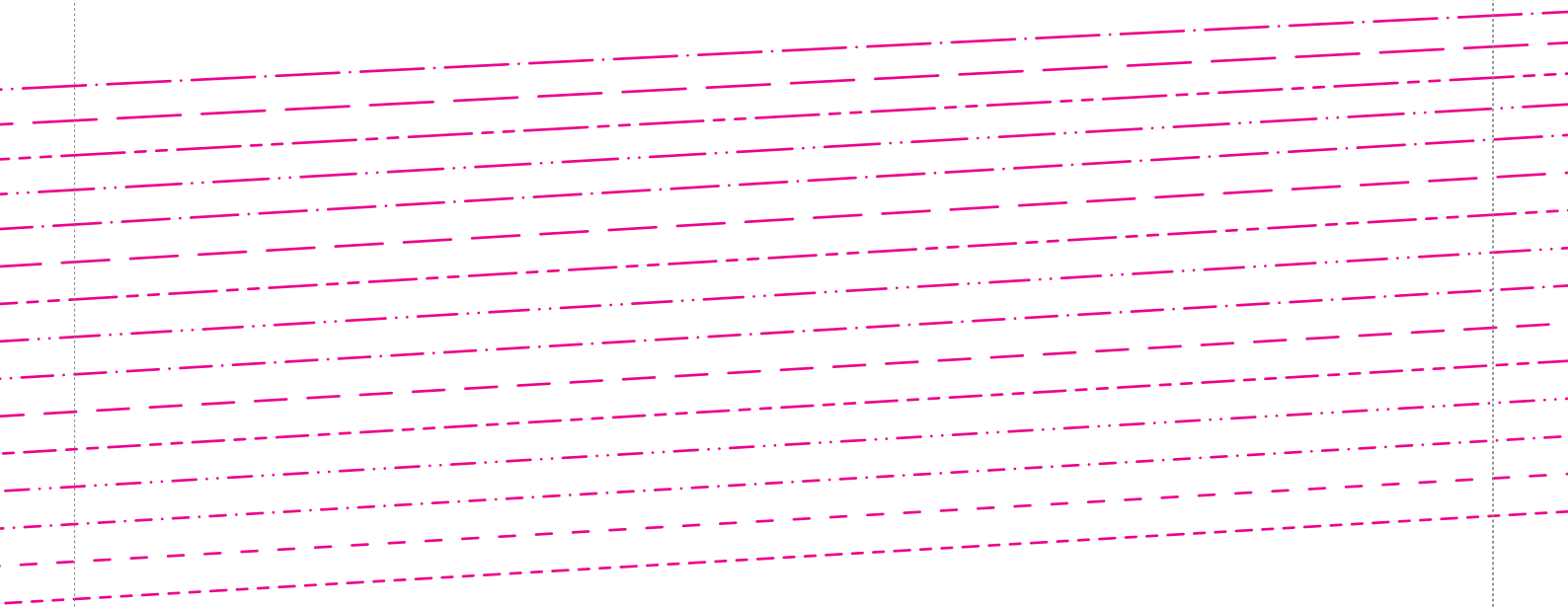


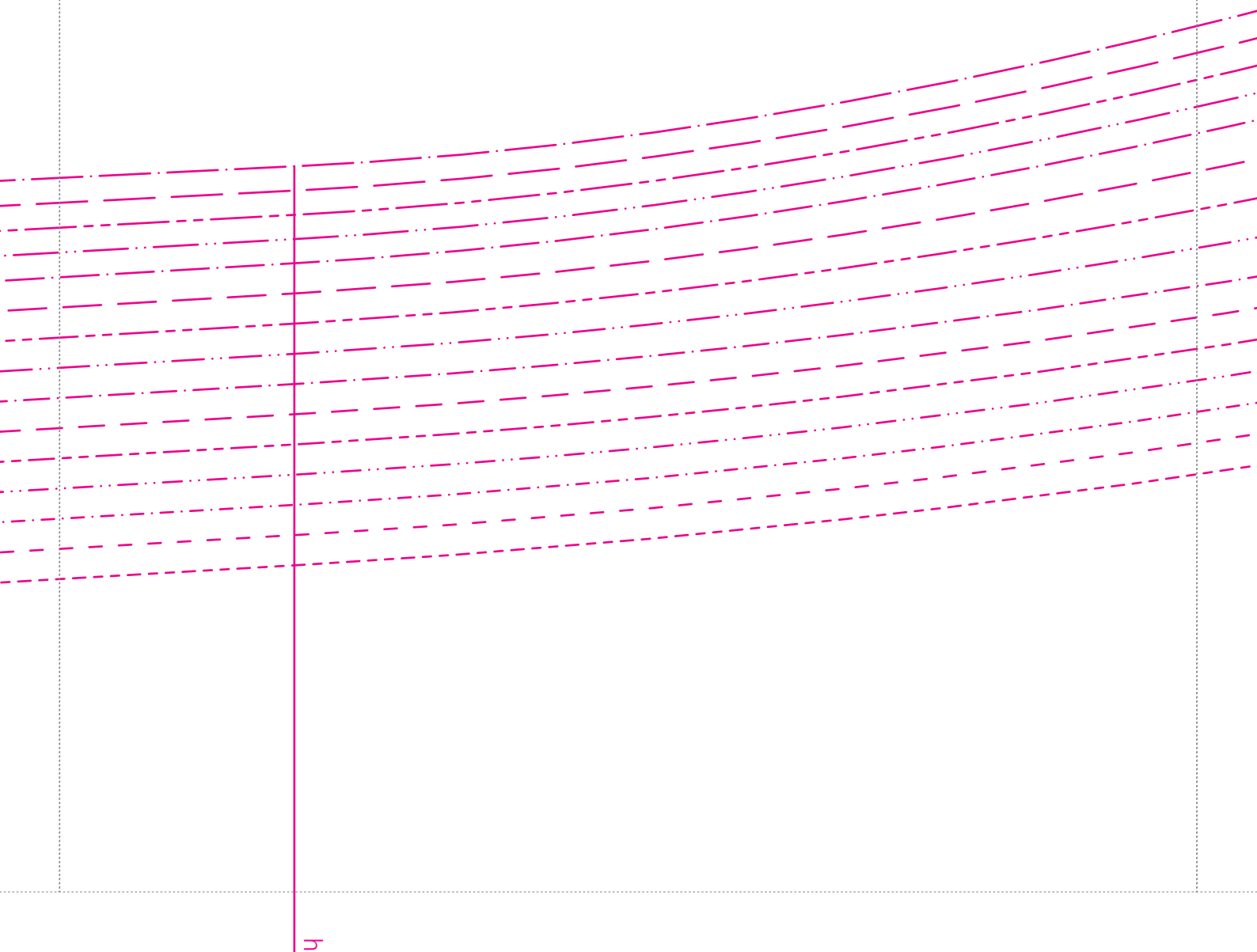


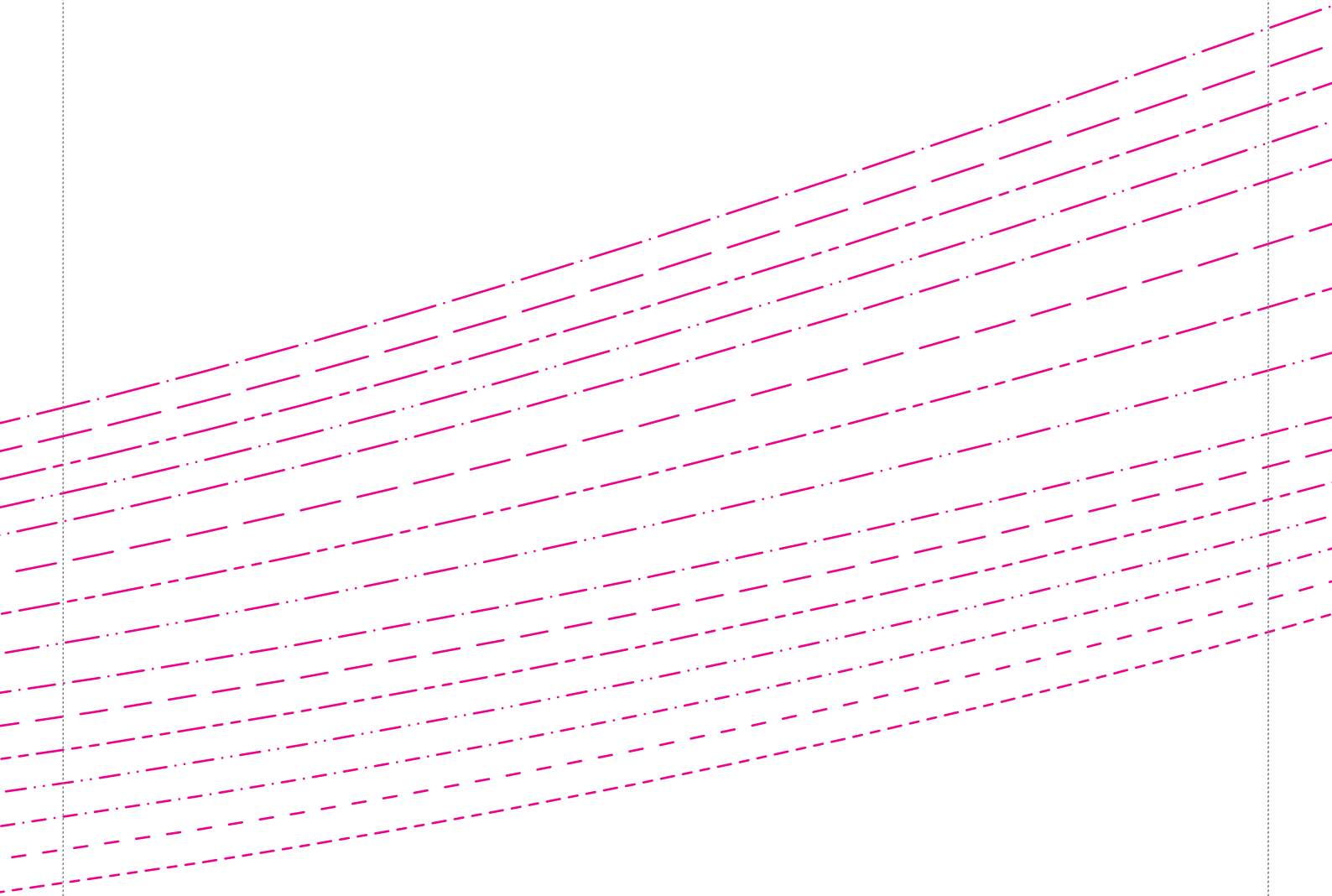


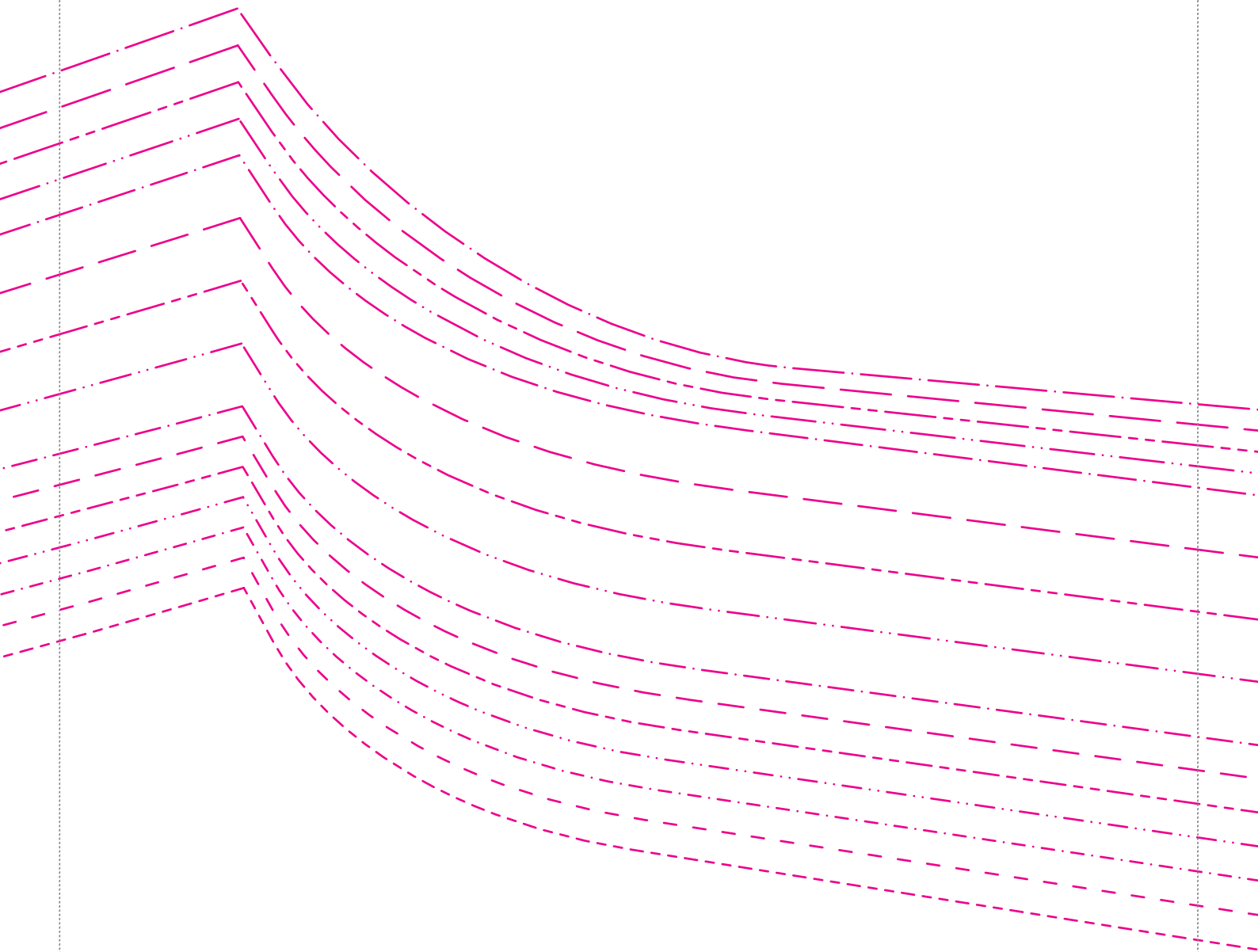


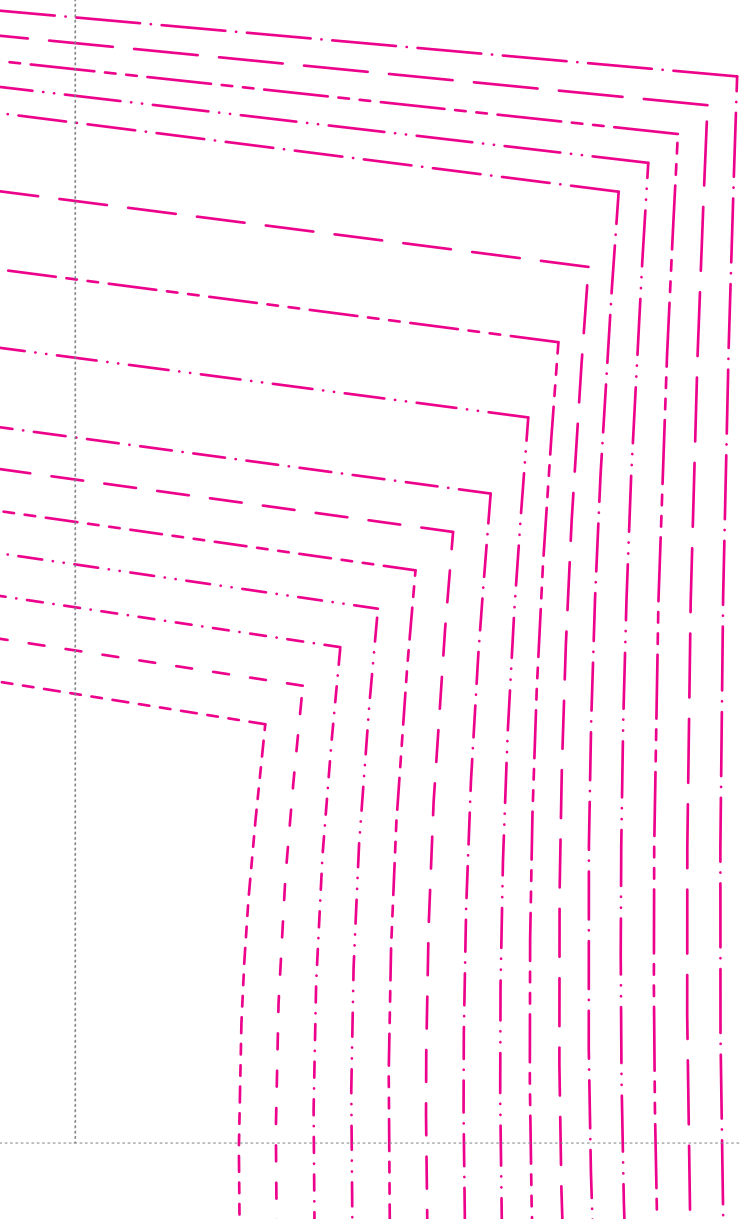


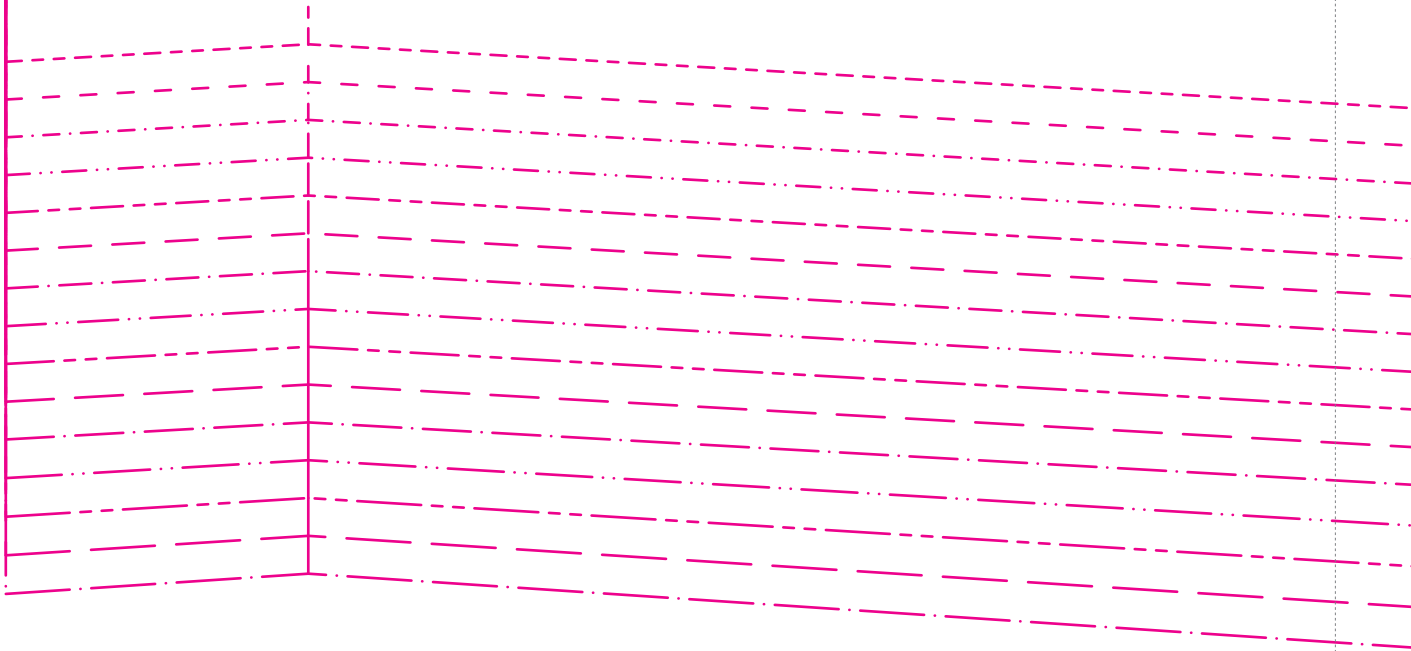


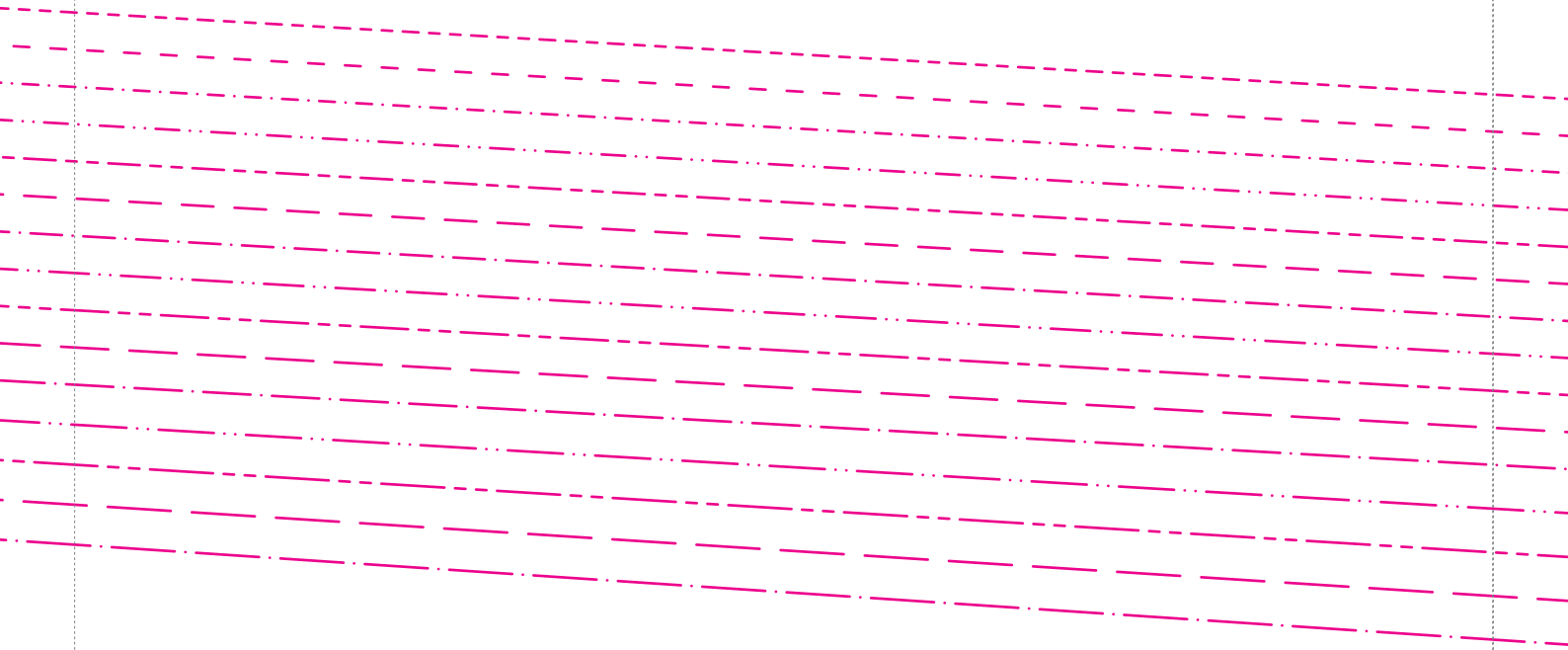




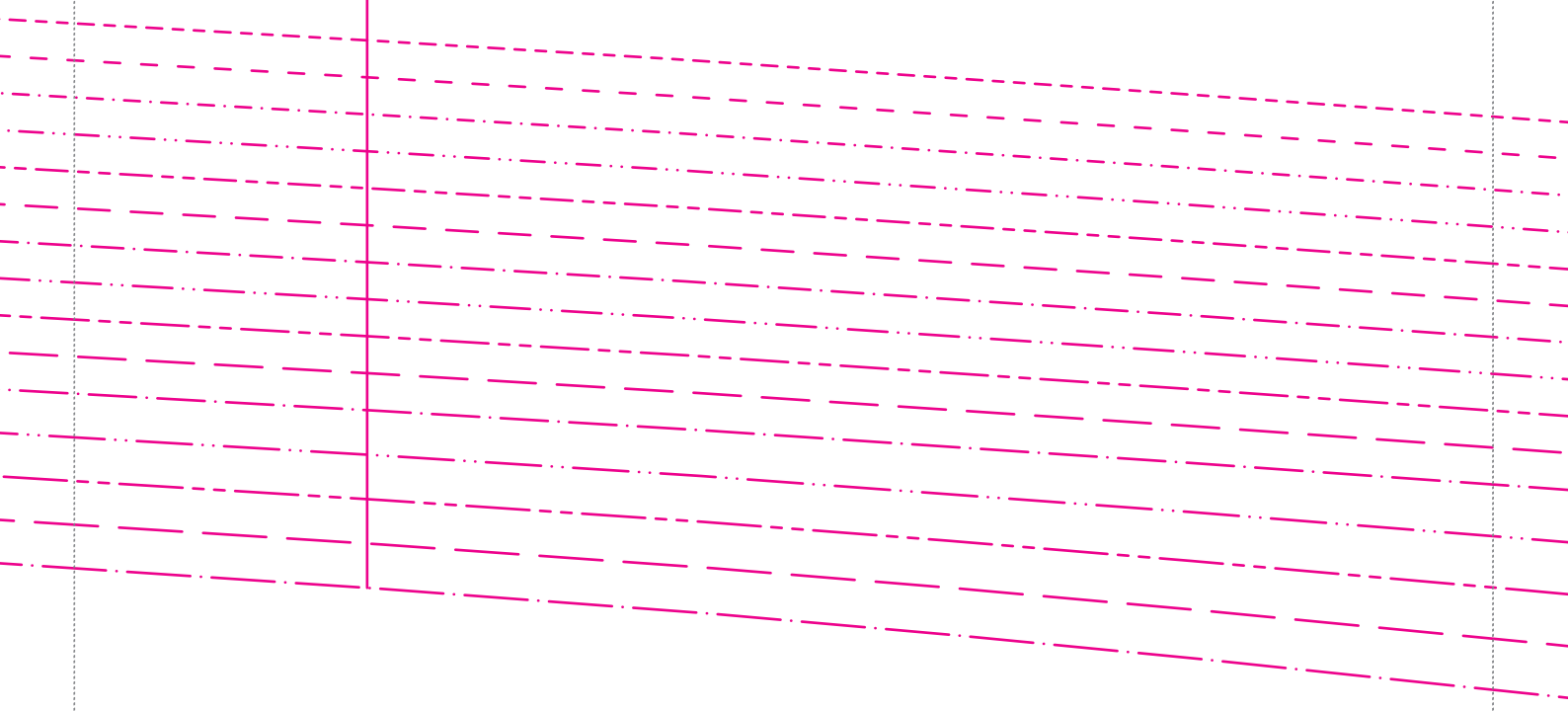


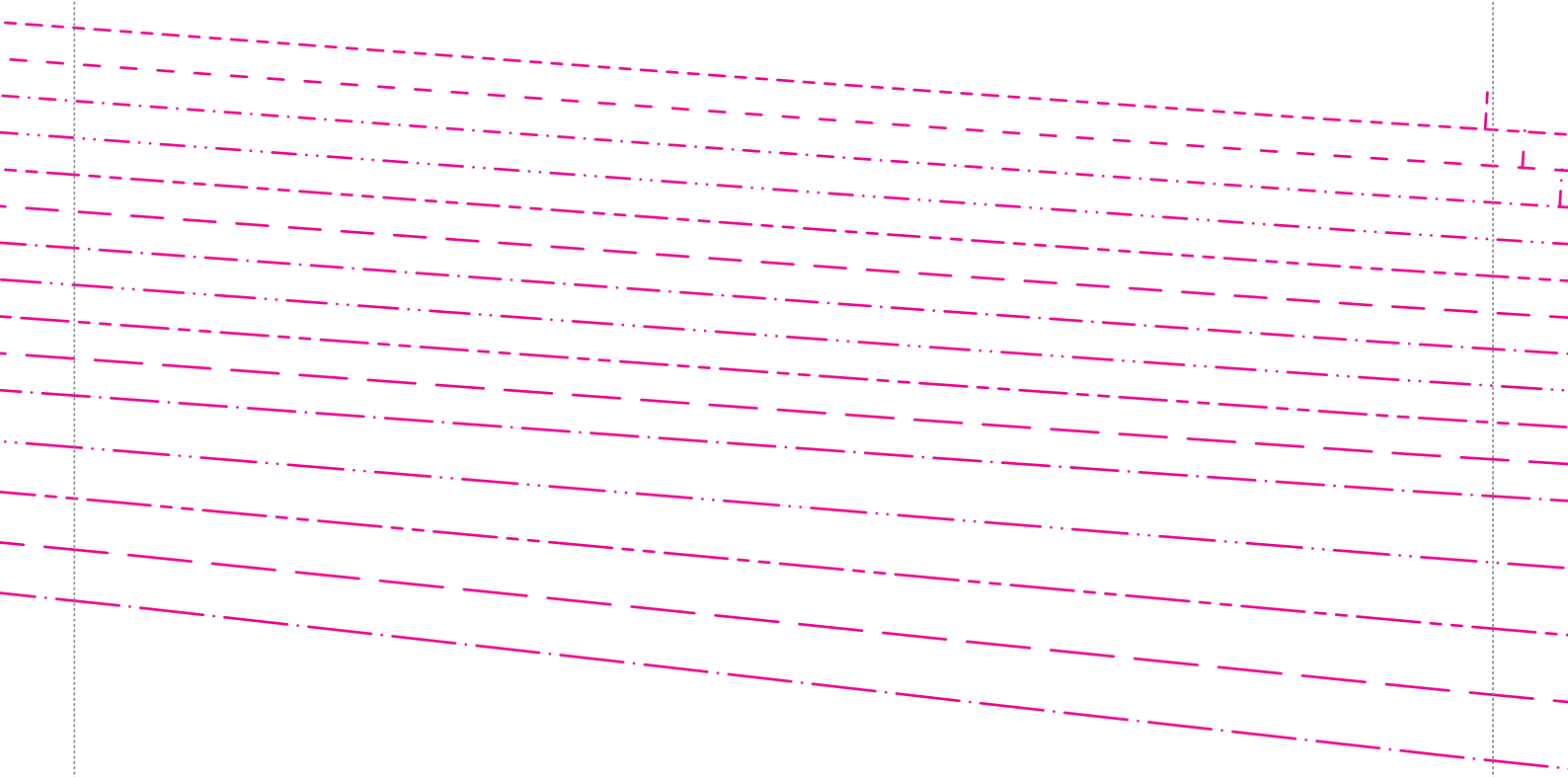


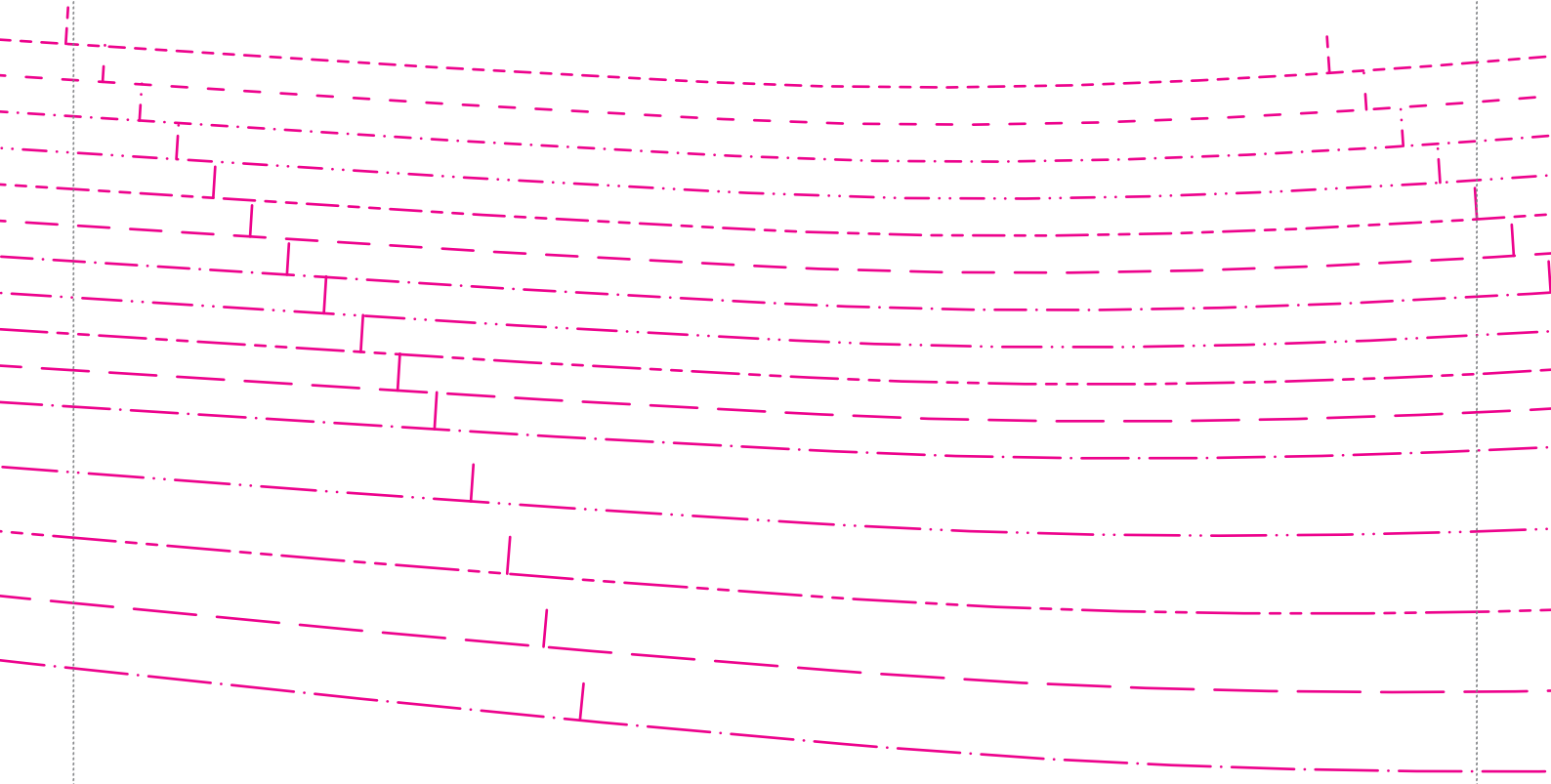




Fadenlauf







30

BREE
VORDERHOSE

