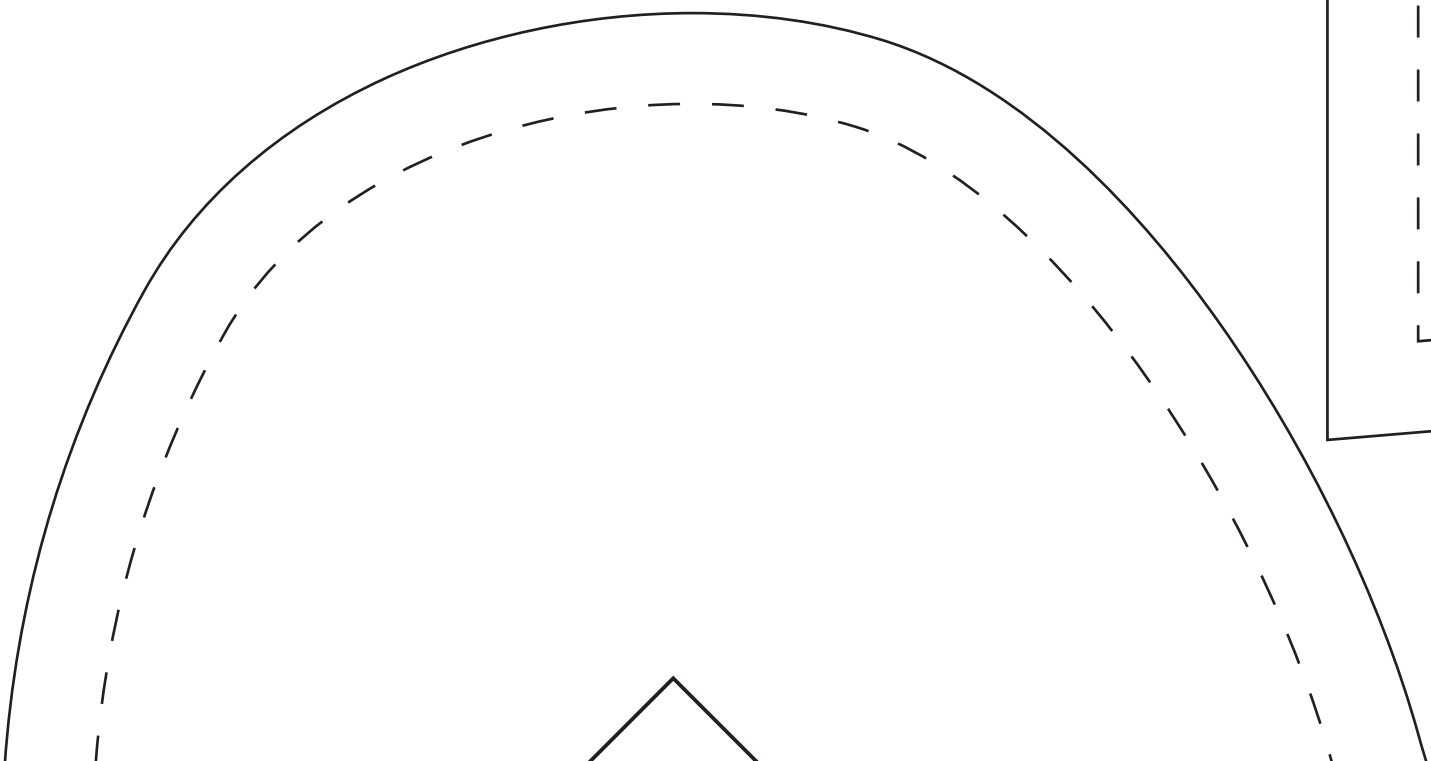
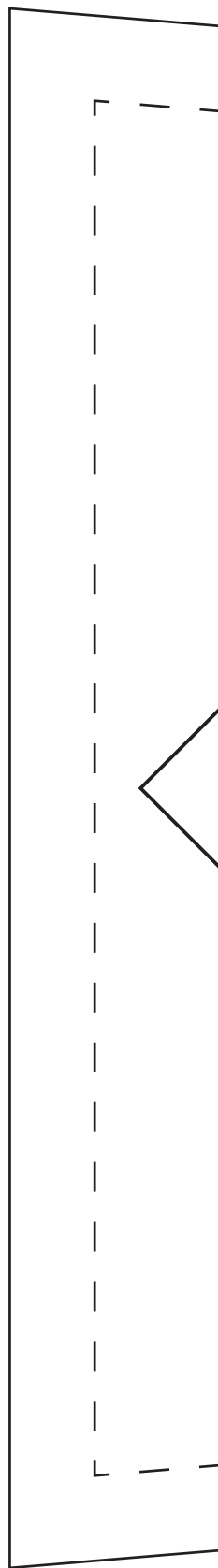
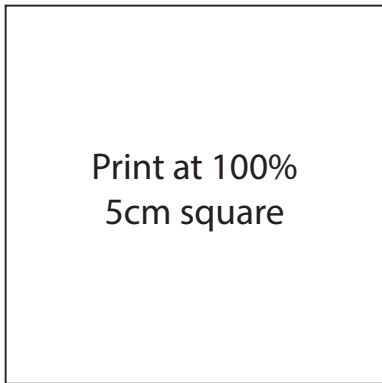
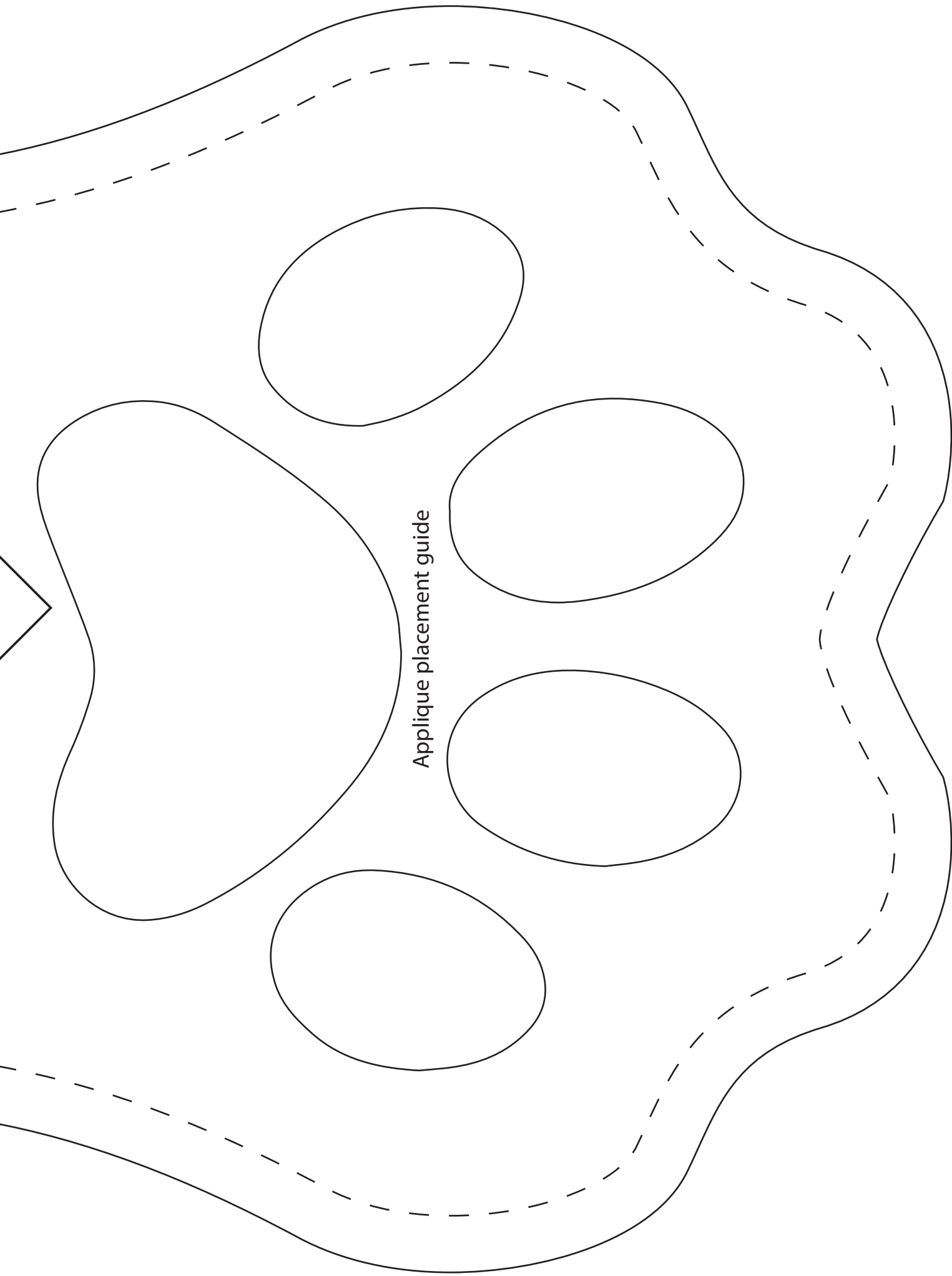


Print at 100%
5cm square

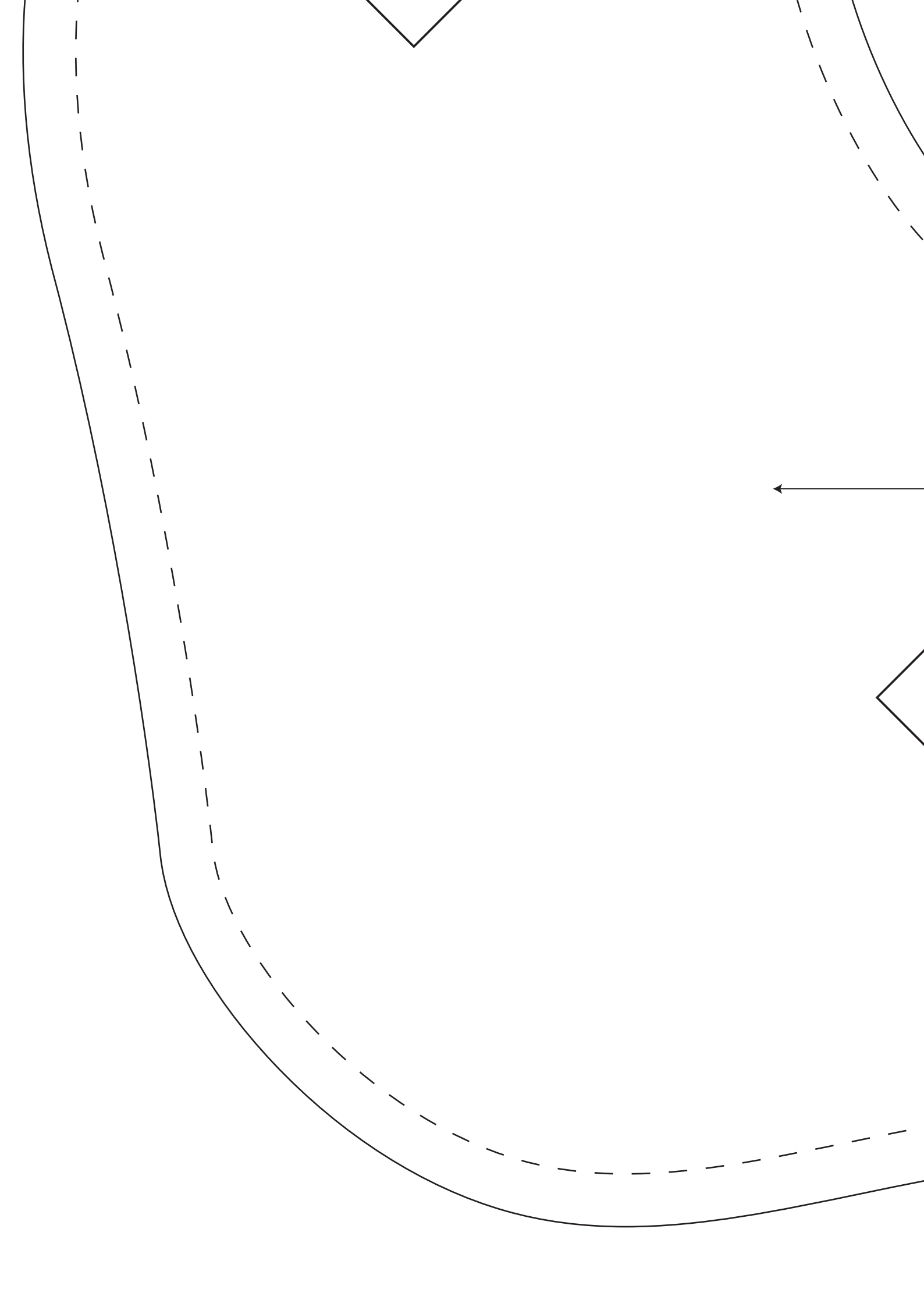


Pet Stocking
Cut 2 Main Fabric
Cut 2 Lining





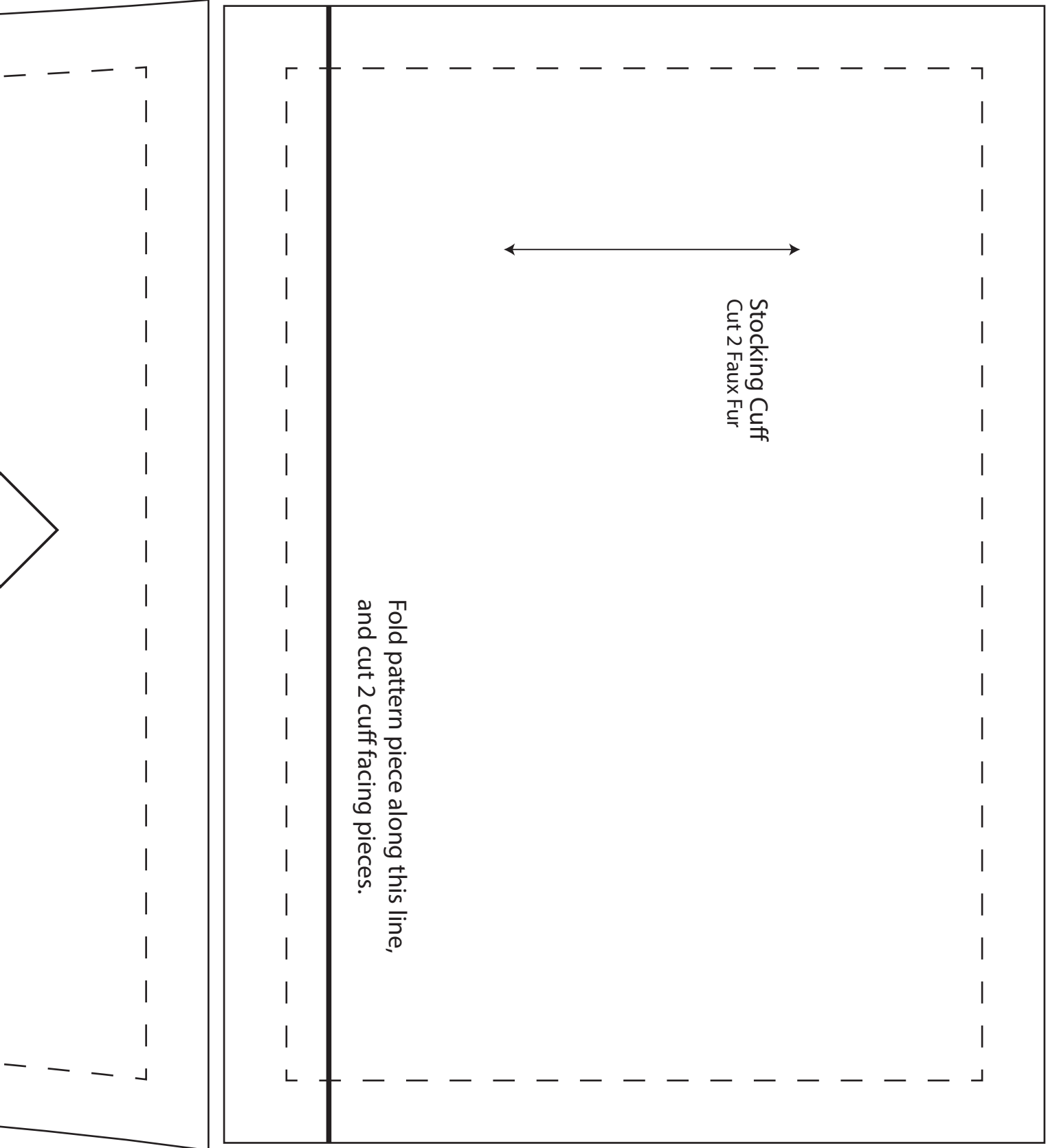
Applique placement guide





Human Stocking
Cut 2 Main Fabric
Cut 2 Lining

The image shows a technical pattern for a human stocking. It consists of a central horizontal arrow pointing to the right, with the text 'Human Stocking', 'Cut 2 Main Fabric', and 'Cut 2 Lining' stacked vertically below it. On either side of the arrow, there are two triangles pointing towards the center. The top and bottom edges of the pattern are defined by solid lines, while the inner edges are defined by dashed lines. The top edge has a slight curve at the ends, and the bottom edge is also curved but in the opposite direction.



Stocking Cuff
Cut 2 Faux Fur

Fold pattern piece along this line,
and cut 2 cuff facing pieces.