

# *lillyella* STITCHERY

## {mini}

# MAKER STATION

This arm rest organization station has a hidden superpower – a thin piece of metal in the body and magnets in the interchangeable accessories that include a small storage basket and pincushion. You can also use other magnetic accessories with it, such as pin bowls.

The pattern includes two sizes, a larger 9" wide, and a smaller 7" wide, to accommodate varying sizes of furniture. Please read the entire pattern before beginning for notes on customizing and other materials needed. A required hardware list is included below and hardware kits are available. This pattern is for advanced beginners with basic quilting knowledge.



### HARDWARE LIST: *(Kits available at [lillyellastitchery.etsy.com](http://lillyellastitchery.etsy.com))*

- One piece 26 gauge galvanized Sheet Metal: 2" x 8.25" for the 9" or 2" x 6.25" for the 7"
- Three round disc magnets for the basket: N45 Neodymium 1" x 1/32"
- One round disc magnet for the pincushion: N45 Neodymium 1" x 1/16"

## *main body*

The main body of the Maker Station measures 7" wide or 9" wide by 17" long (if you are cutting your own metal, you can customize the width). The 17" length is based on a variety of measured arm rests. Depending on your furniture, you can adjust this measurement to be longer or shorter. I recommend cutting a piece of paper to the pattern dimensions and laying it over your arm rest to check the size.



### CUTTING:

*When "width" is specified, insert 7" or 9" depending on which size station you are making.*

#### Body:

- Cut two width x 17", one front and one back
- Cut one width x 17" batting
- Cut one width x 2.25" Pellon SF101 Interfacing

#### Pocket A:

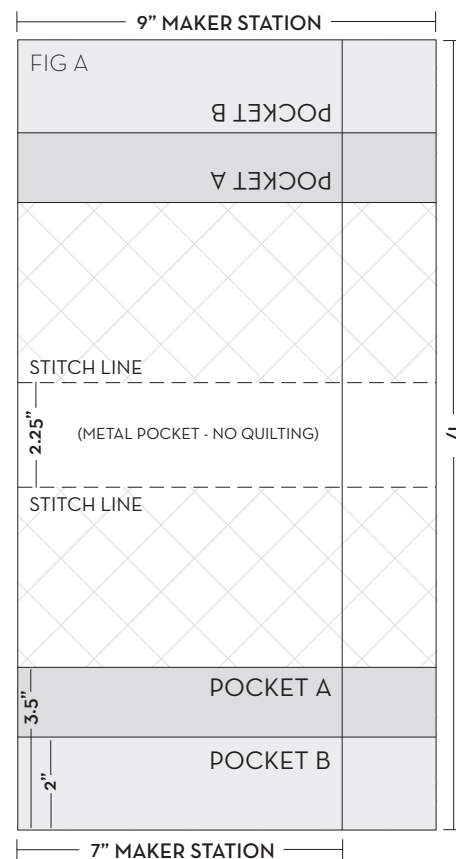
- Cut two width x 7" (will fold half)
- Cut two width x 3.5" Pellon SF101 Interfacing

#### Pocket B:

- Cut two width x 4" (will fold half)
- Cut two width x 2" Pellon SF101 Interfacing

#### Binding:

- Cut two 1.5" x WOF strips



## main body (cont.)

To create the body, first press the width x 2.25" strip of interfacing centered across the wrong side of the main body top panel so that it falls between the stitch lines shown on FIG A. Make a quilt sandwich with the main body top, batting, and backing. Top stitch through all the layers across the width of the main body at 7.375" from either end. These are the stitch lines shown on FIG A. There should be 2.25" inches between the stitch lines. This creates the "pocket" for the sheet metal. Next, quilt the main body on either side of the stitch lines, but not in between. Set this piece aside.

To create the pockets, fold each of the four pocket fabric pieces in half, wrong sides together, along the width dimension and crease. Unfold and press one corresponding piece of interfacing to the back of the fabric on one half of each panel (it doesn't matter which half). Refold each panel, wrong sides together, press well and top stitch along the folded edge. Place the pocket pieces onto the main body as shown in FIG A and baste to hold in place. At this point, you can stitch divider lines into the pockets, if desired, by top stitching through all the layers. I like to leave the pockets undivided on one side and stitch a few dividers onto the larger pocket of the other side, so I have some options depending on what I'm working on. Undivided pockets can hold larger templates, rulers, stitch charts, patterns, etc, while divisions can help hold writing utensils, knitting needles, crochet hooks, snips and seam rippers in place.

Next you will bind the main body using a single fold technique. It is very similar to "traditional" quilt binding, but you do not press the binding strip in half first. Start by joining the two WOF binding strips along the 1.5" dimension using a 1/4" seam. Next, sew the binding, right side down, onto the front of the main body using a 1/4" seam beginning just above both stitch lines as shown in FIG B. Miter the corners in the same way you would with a standard binding method. Before you sew the binding over the stitch lines on the other side, insert the sheet metal between the top fabric and the batting. Continue sewing the binding down and join the ends using your preferred method.

Once the binding is stitched down, gently press the binding to the outside of the piece and then flip it over so the back is facing up. Fold the visible binding in half onto itself (up to the edge of the main body) and press. You can now fold the binding over to the back of the main body and stitch it down by hand or machine. Figure C shows little snippets of these three folds.

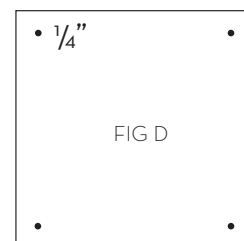
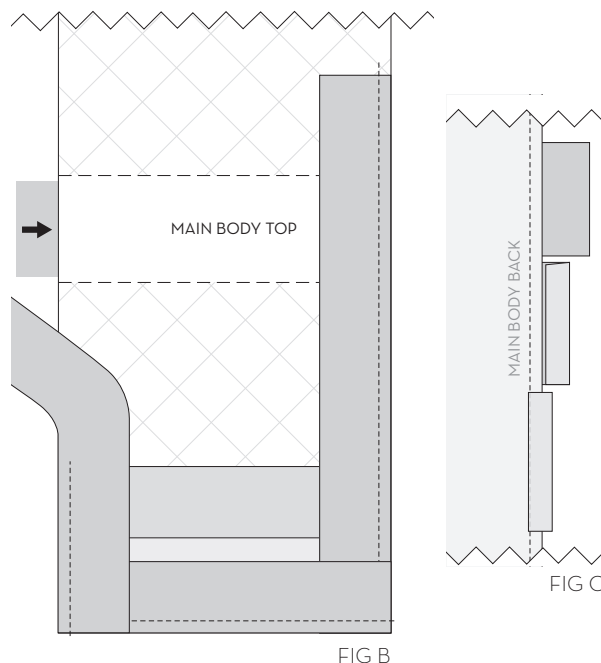
## pincushion

This little blocky pincushion finishes at 2.25" square by 1.25" high so it fits snugly inside the basket and can also sit on its own.

### CUTTING:

- Two 2.75" squares, one for top and one for bottom
- Three 2.25" squares Pellon SF101 Shapeflex Interfacing
- One 9.5"w x 1.75"h for pincushion sides

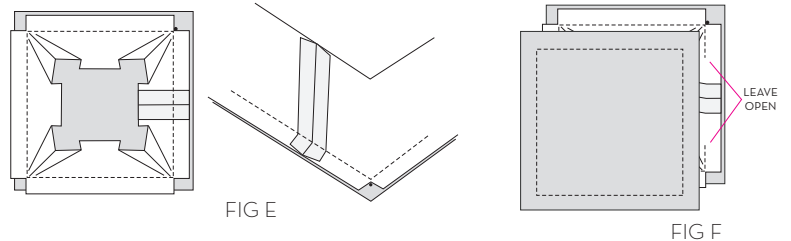
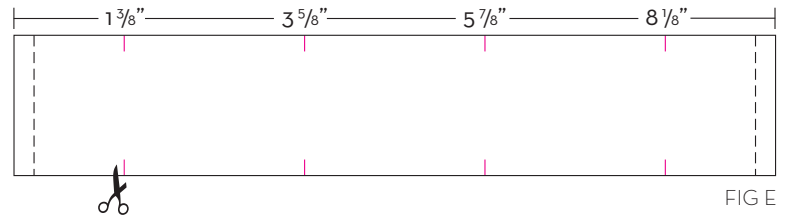
To create the pincushion, first press one piece of interfacing centered on the wrong side of the pincushion top, set aside. Repeat this step on the pincushion bottom. You will then place the remaining piece of interfacing over the first on the pincushion bottom and press ONLY along three edges. You will later slip the magnet into this interfacing "pocket" through the unpressed side. Be sure to use steam and ensure the interfacing is thoroughly adhered. Next, using an erasable writing utensil (such as a Frixion Pen), mark little dots 1/4" in from each corner on the right sides of the pincushion top and bottom (FIG D). These will be sewing guides.



## pincushion (cont.)

On the pincushion side piece, cut small snips  $\frac{3}{16}$ " into the fabric at the lines indicated in pink on FIG E. These will help in turning the corners while sewing the cube together. Fold the pincushion side piece in half, right sides together, along the 1.75" dimension and piece the ends using a  $\frac{1}{4}$ " seam. Back stitch at the beginning and end.

With right sides together, stitch the side piece to the cushion top as shown in FIG E using a  $\frac{1}{4}$  seam allowance. The small cuts you made will align with the dots you marked. Repeat this step to attach to the bottom of the pincushion in the same fashion, but leave an opening slightly longer than 1" for turning, inserting the magnet, and filling. **You need to leave this opening on the same side as the unpressed edge of interfacing so you can insert the magnet.**



Turn the pincushion right side out and insert the thicker  $\frac{1}{16}$ " magnet through the opening and between the two layers of interfacing on the pincushion bottom. You will now press the open edge of interfacing down to secure the magnet inside the interfacing "pocket". You can do this by using the tip of your iron and placing it through the opening or you can collapse the pincushion onto itself and press through the top or bottom (you can iron out any wrinkles later). Regardless of how you choose to press it, you will need to hold the magnet in place using a couple fingers and firmly pressing it against your ironing board. The magnet will want to pull toward the iron, but it doesn't take too much to keep it in place. Just go slow and pay attention. You can now fill your pincushion with walnut shells or stuffing and hand stitch the opening closed using a ladder stitch or small whip stitch.

## fabric basket

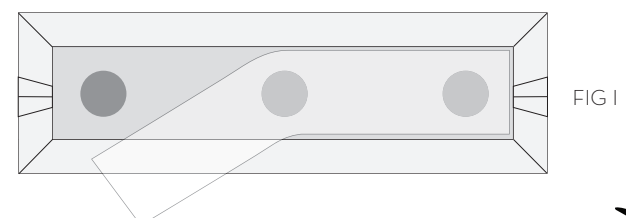
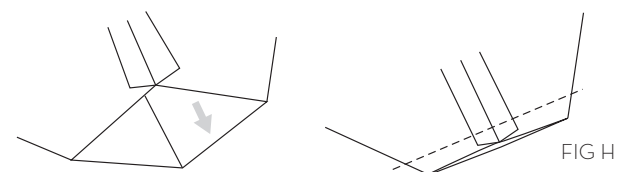
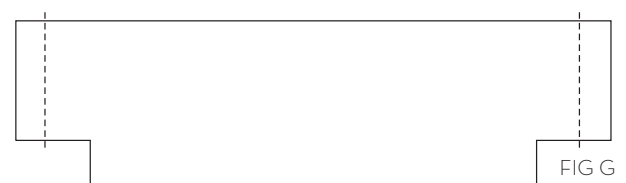
The basket requires one fabric for the outside, one for the lining, one piece of Peltex 71F single-sided fusible interfacing to give it structure, and one piece of Pellon SF101 interfacing to hold the magnets in place. You will find diagrams for cutting and preparing these pieces on page 5. The diagrams include measurements for both station sizes and directions for using directional or non-directional fabrics.

Fold the outer basket fabric in half, right sides together, and sew the two short sides together using a  $\frac{1}{2}$ " seam allowance (FIG G). Next, box the open corners by folding them together as shown in FIG H and sewing with a  $\frac{1}{2}$ " seam allowance. Press the seams open and turn the piece right side out. Repeat these steps with the lining fabric, but leave the piece inside out. Fold the top edge over, wrong sides together,  $\frac{3}{8}$ " and press. This is the first fold of the wrap over lining.

Place the three  $\frac{1}{32}$ " magnets evenly spaced along the inside bottom of the basket outer piece (FIG I). **NOTE: You need to check that the magnet poles in your pincushion and basket are going the same direction so that they do not repel each other. Test this by placing your pincushion on top of each magnet in your basket. If they repel, flip over the magnet in the basket.**

Lay the SF101 interfacing on top and press around the magnets, once again using a couple fingers to firmly hold the magnets in place while pressing around them.

With the fusible side facing out, fold the Peltex into the basket shape using the creases you created and insert it into the outer basket piece.





## fabric basket (cont.)

Once it is in place and the outer fabric is smoothed out and even, hold a folded towel or oven mitt in one hand inside your basket and press with a hot steam iron setting from the outside against your hand, one side at a time, to fuse the fabric to the peltex.

Next, place the lining piece, wrong side out, inside the Peltex. The pressed fold of the lining should be above the Peltex. Fold the lining down around the outside edge of the basket and, if desired, glue in place or stitch down as you would binding, or through the lining with some decorative embroidery stitches.

These fabric baskets are one of my favorite things to make! They're so useful for a million and one different things. You can find a tutorial for making any size custom basket on my website in the Free Patterns & Tutorials section.

## thread catcher



The optional thread catcher hangs from a small loop of trim and a button sewn to your Maker Station anywhere you wish. It can be used to catch scraps or for extra storage.

### CUTTING:

- Cut two 4.75" w x 4.25" h outer fabric
- Cut two 4.75" w x 4.25" h for lining
- Cut two 4.75" w x 4.25" h Pellon SF101 Shapeflex Interfacing
- One piece ribbon/trim 3" long
- Button(s) for hanging

Press one piece of interfacing to the back of each outer fabric piece. Cut  $\frac{3}{4}$ " squares from the bottom corners of both outer pieces and both lining pieces (FIG J).

Lay the back outer panel right side up. Fold your length of trim in half and place it centered along the top edge. Baste with a  $\frac{1}{8}$ " seam to hold in place (FIG J).

Place one outer panel and one lining panel right sides together. Piece them together along the top edge with a  $\frac{1}{4}$ " seam allowance. Press open. Repeat with the second outer and lining panels. Next, place these two units right sides together with outers and linings matching up and stitch around the outer edges with a  $\frac{1}{4}$ " seam allowance as shown in Fig K. You will leave the corners open, as well as a gap in the bottom of the lining for turning the piece.

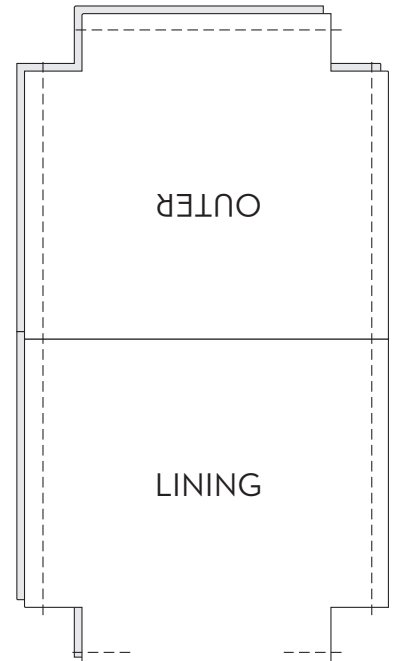
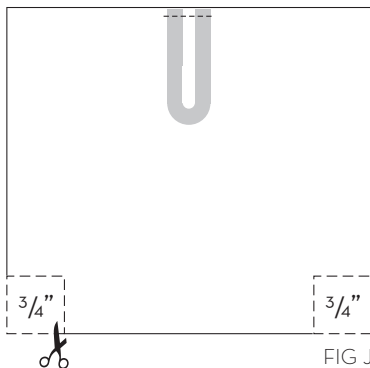


FIG K

Next, box all four corners as you did with the fabric basket using a  $\frac{1}{4}$ " seam allowance. Turn your piece right side out through the gap. Stitch the opening closed and turn the lining to the inside. Press the top seam and top stitch around the edge. Hand sew a button (or buttons) onto your Maker Station Body for hanging. *Note: if you are using a very large button, you may need a longer piece of trim.*

## notes

As I mentioned in the beginning of the pattern, magnetic pin bowls are a perfect addition to your maker station. They can be used to hold pins or simply as another storage dish. Pin bowls are available in sewing shops and online in a wide variety of colors and styles, or you can pick up a magnetic parts holder from an automotive or tool shop and spray paint it to match your project. I purchase mine from Harbor Freight for \$2.99. Cover the magnetic base well with tape and spray paint the top with a couple coats.

I hope you've enjoyed creating your Mini Maker Station! Be sure to share your photos on social media with #minimakerstation!

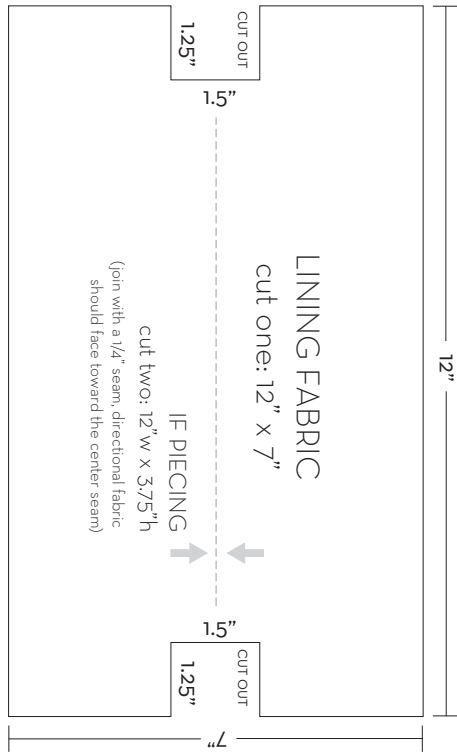
## TERMS OF USE

This pattern is for personal use and may not be copied or distributed. You may sell handmade items made from this pattern under these conditions:

- Credit for the pattern must be given as 'lillyella stitchery'
- No mass production of any sort is allowed.

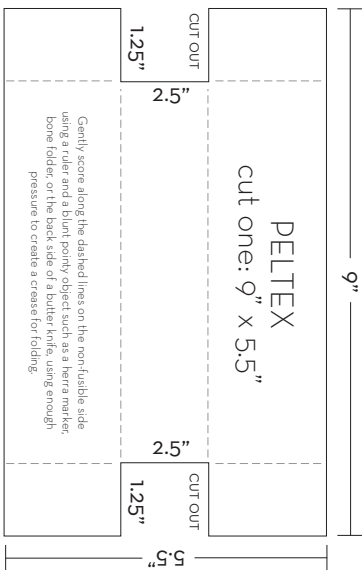
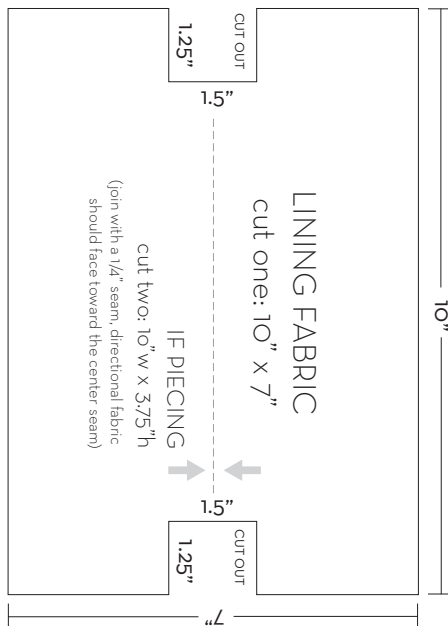
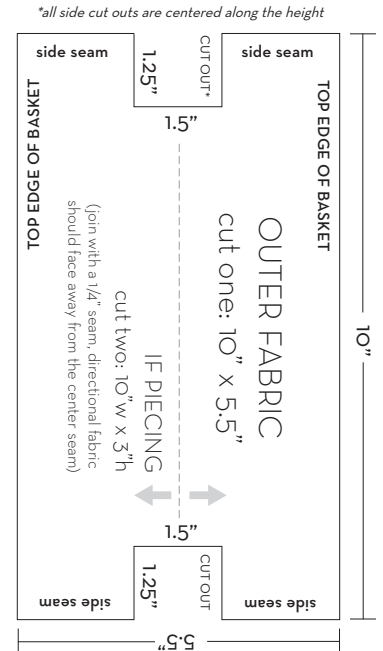


9" STATION



• Also cut one piece Pellon SF101 Interfacing 8.5" x 2.5"

7" STATION



• Also cut one piece Pellon SF101 Interfacing 6.5" x 2.5"