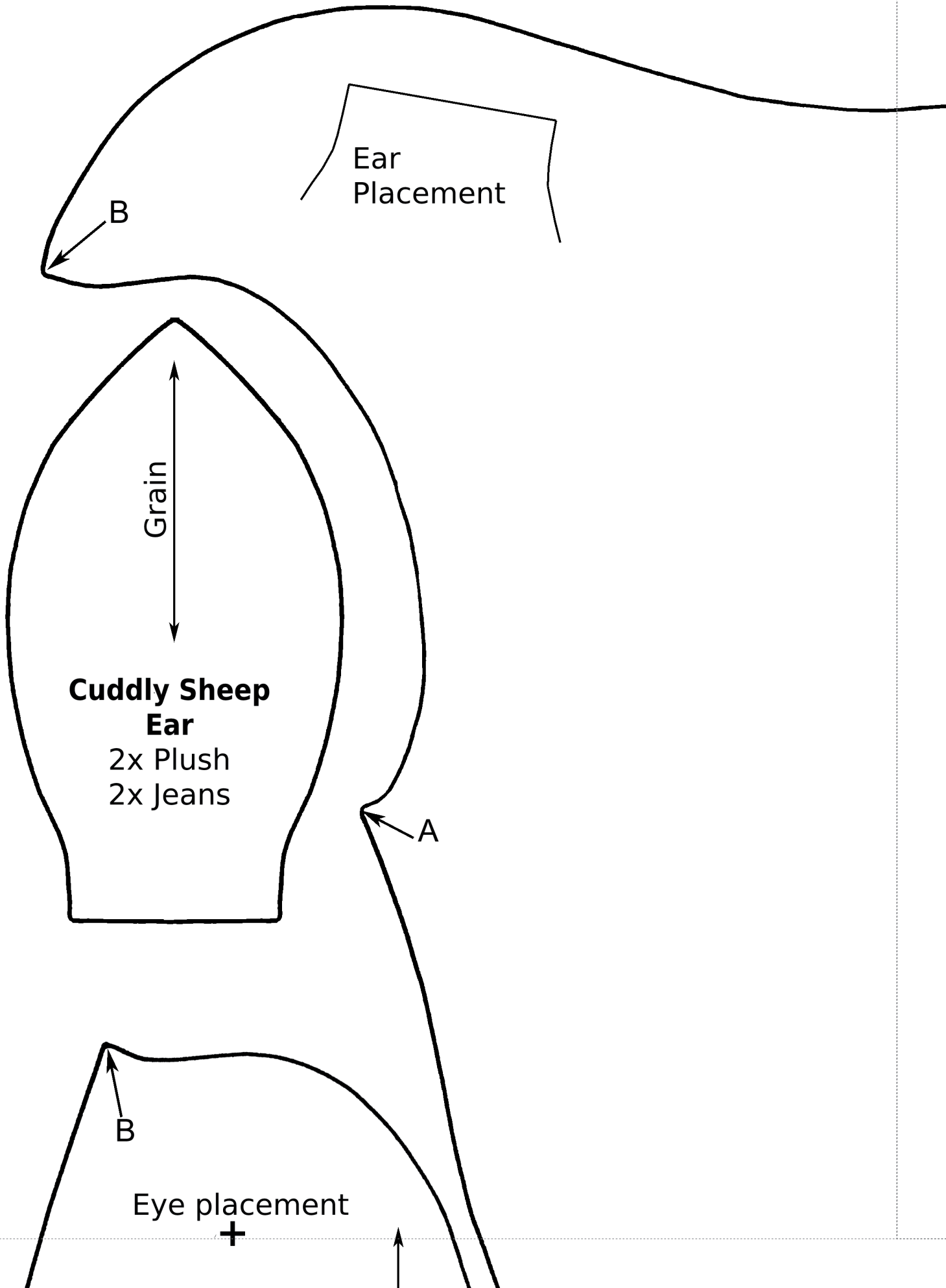


1

Cuddly Sheep Pattern

Seam allowance not included - Please add 1cm on



cm on all pieces²



Cuddly Sheep Body

2x Plush fabric (1 mirrored)



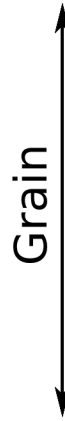
10 cm

**Controlling square
for correct printing size**

Make sure your printer is set
on 100% and not scaled.

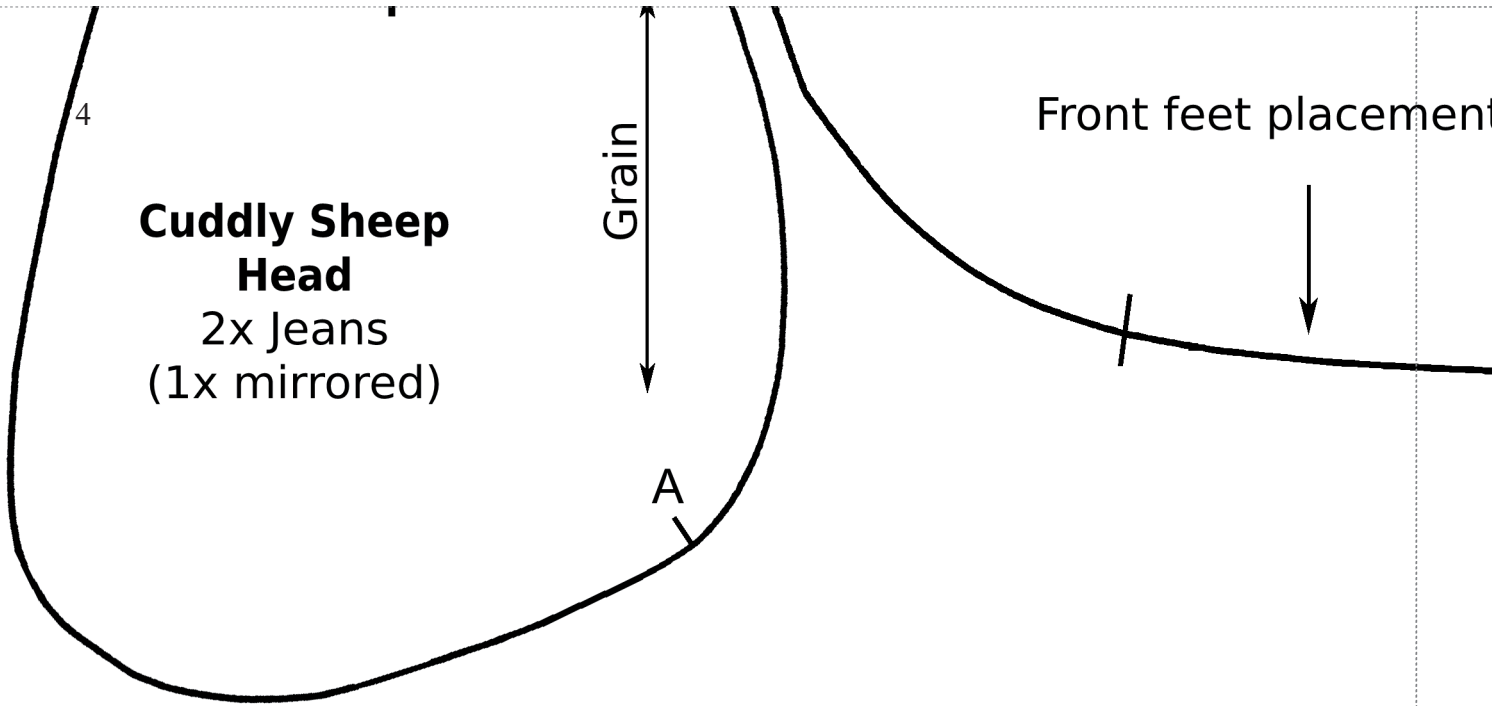
This square has to be
10cm x 10cm
for everything to
be correct!

10 cm



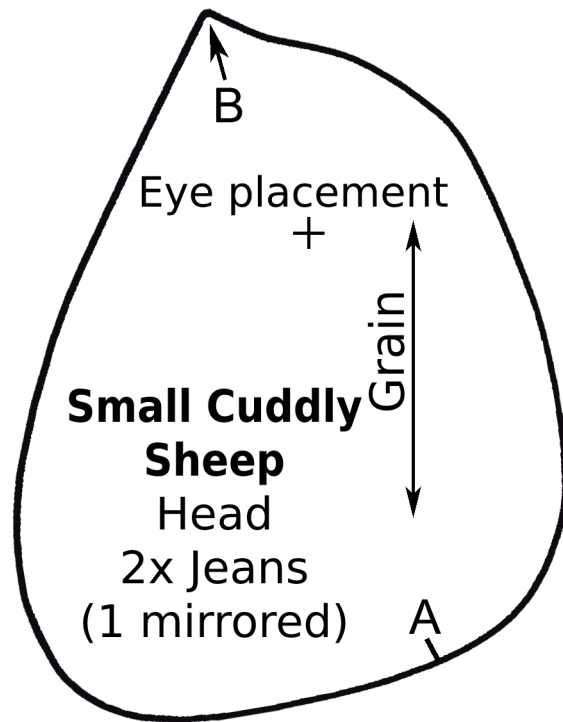
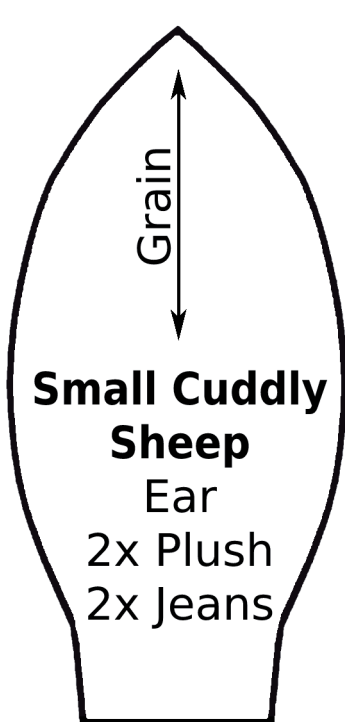
**Cuddly Sheep
Foot**

8x Jeans
(4x mirrored)



Small Cuddly Sheep Pattern

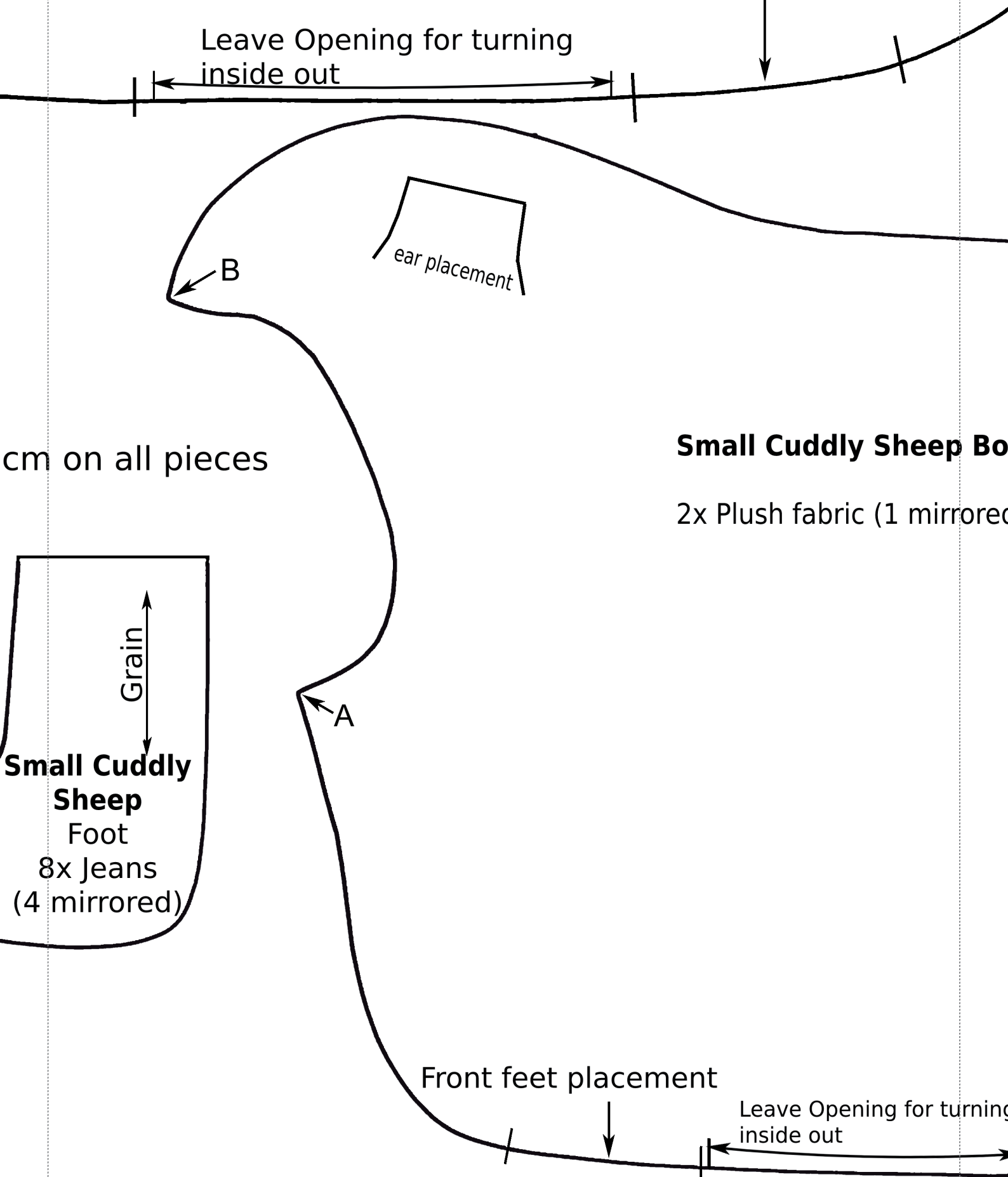
Seam allowance not included - Please add 1cm or



placement 5

Back feet placement

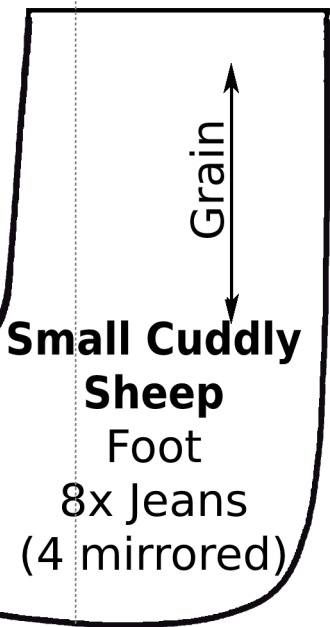
Leave Opening for turning
inside out



cm on all pieces

Small Cuddly Sheep Body

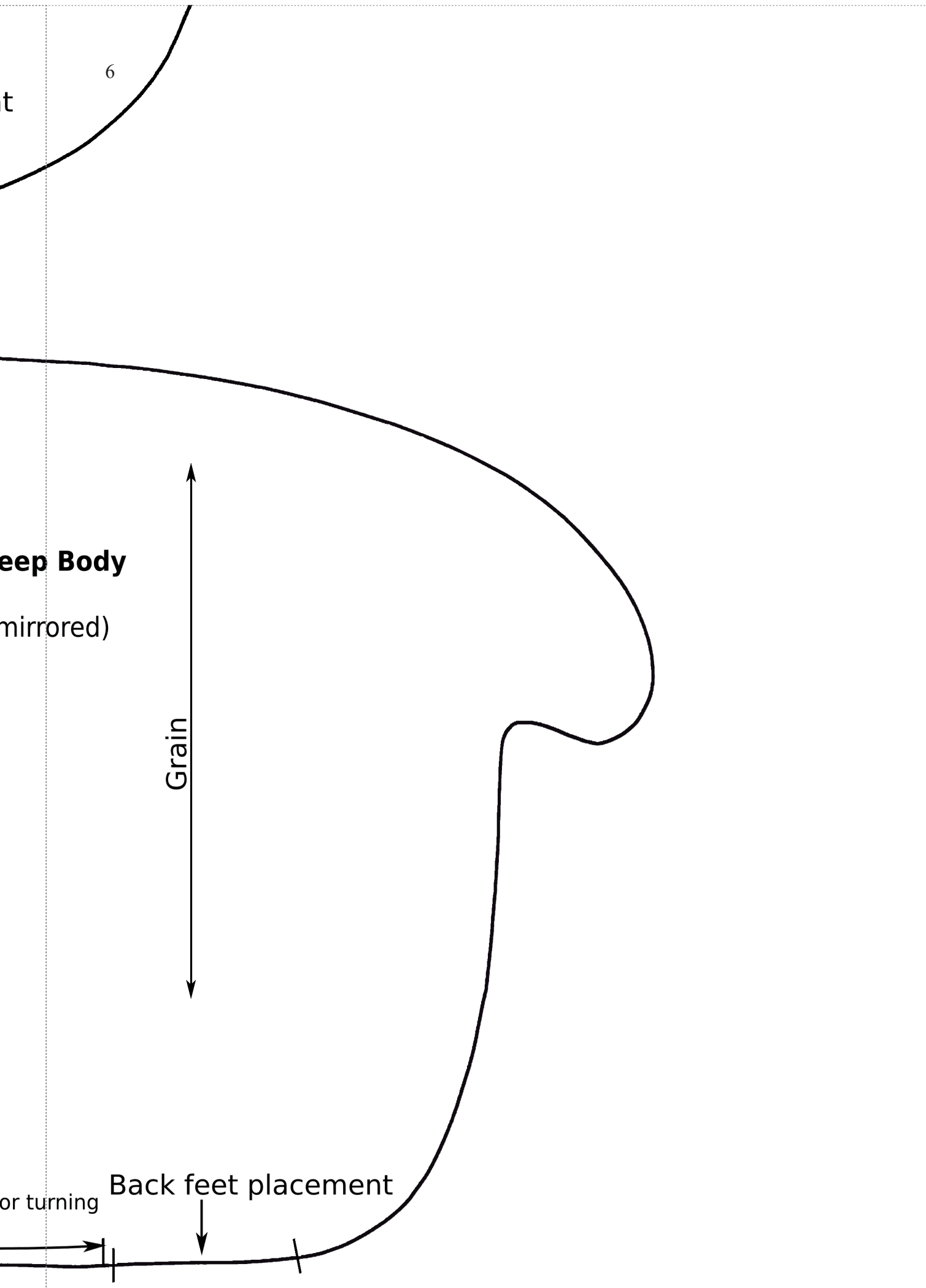
2x Plush fabric (1 mirrored)



Small Cuddly Sheep Foot
8x Jeans
(4 mirrored)

Front feet placement

Leave Opening for turning
inside out



6

t

Deep Body

(mirrored)

Grain

or turning

Back feet placement