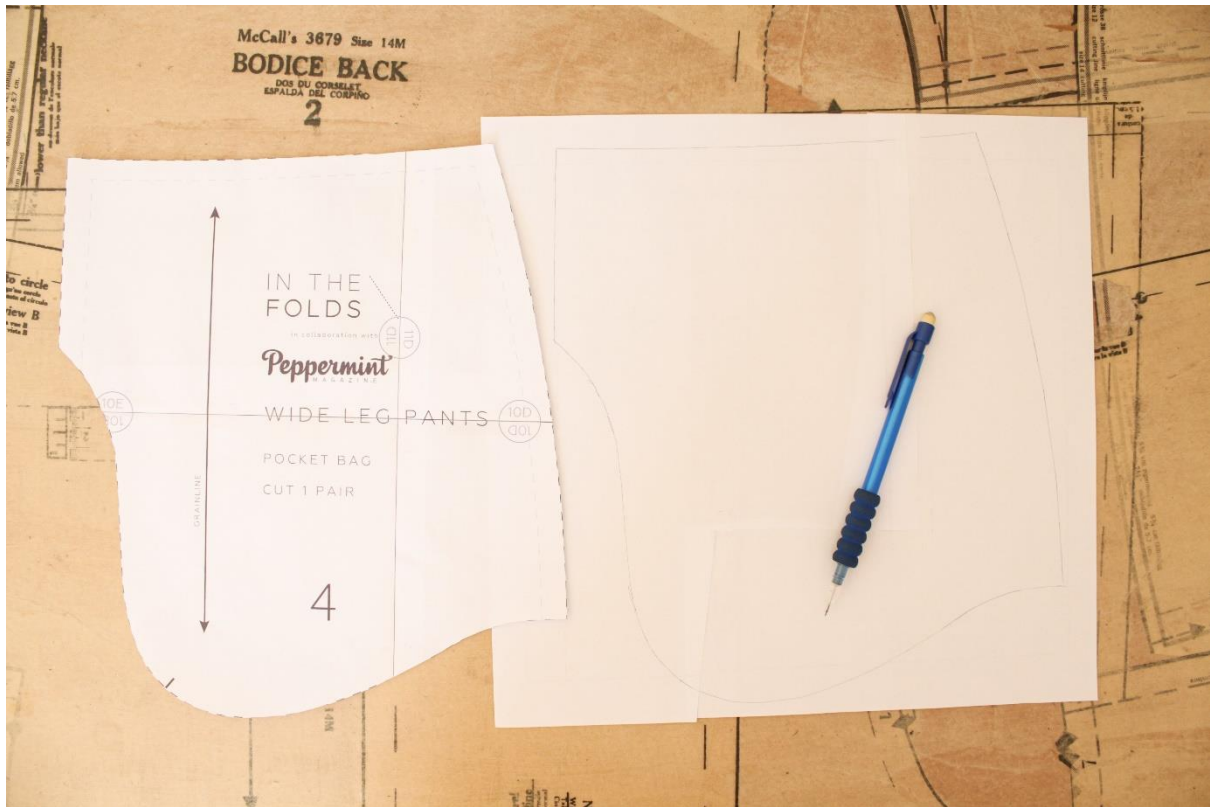
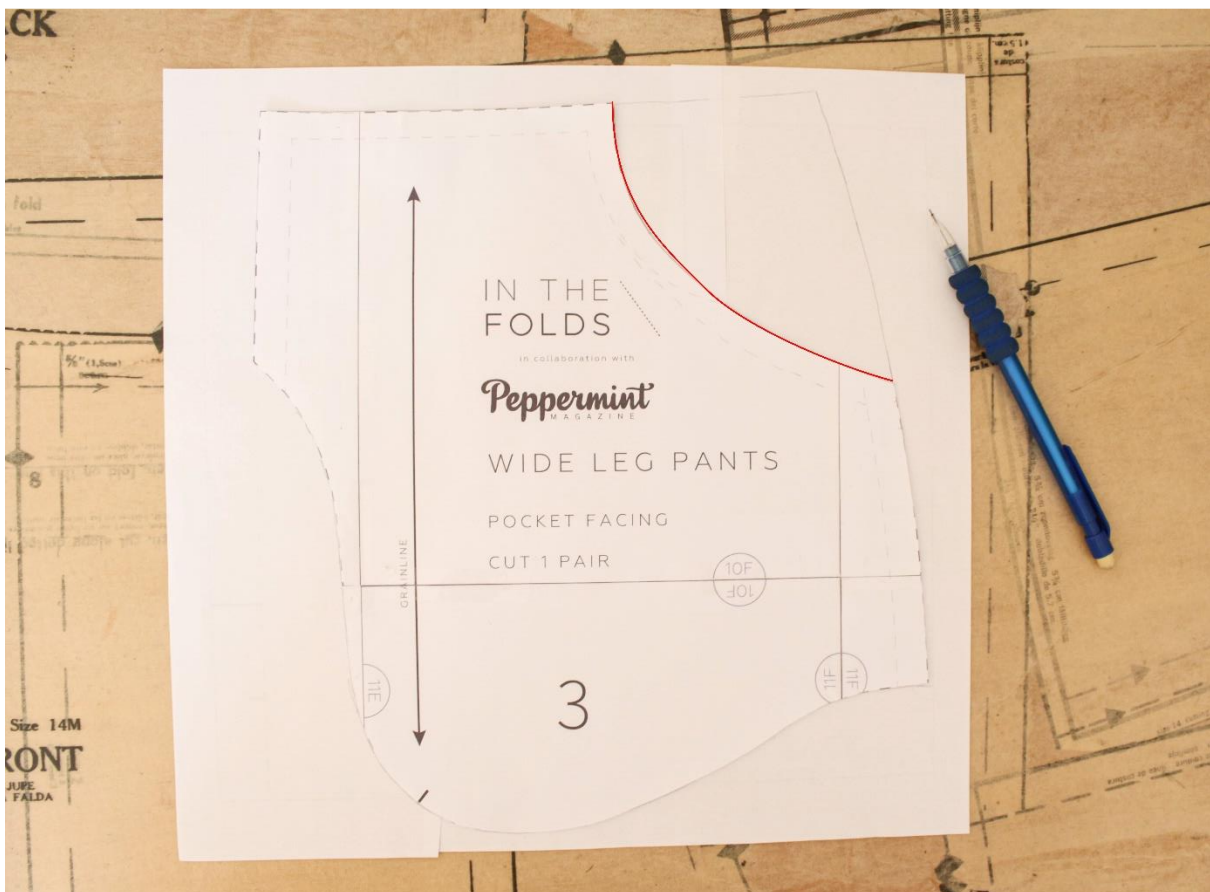


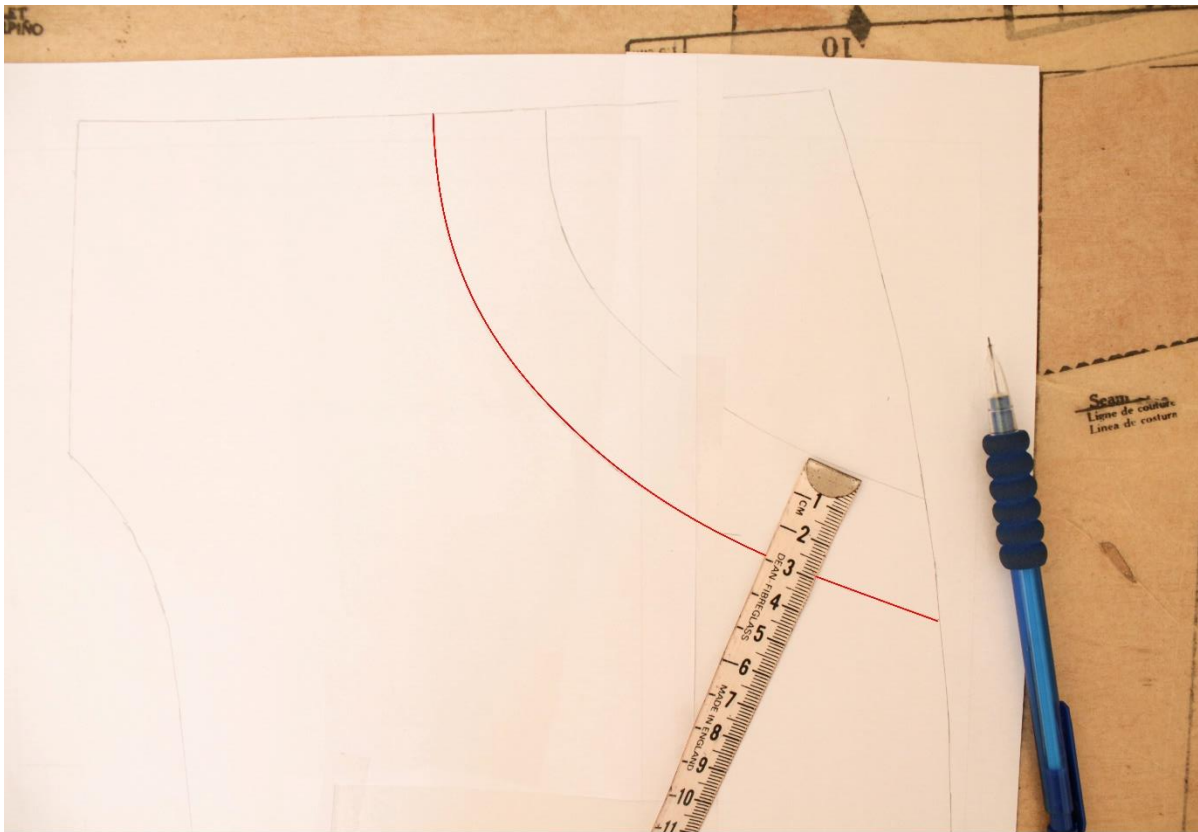
## Front Pocket Facing



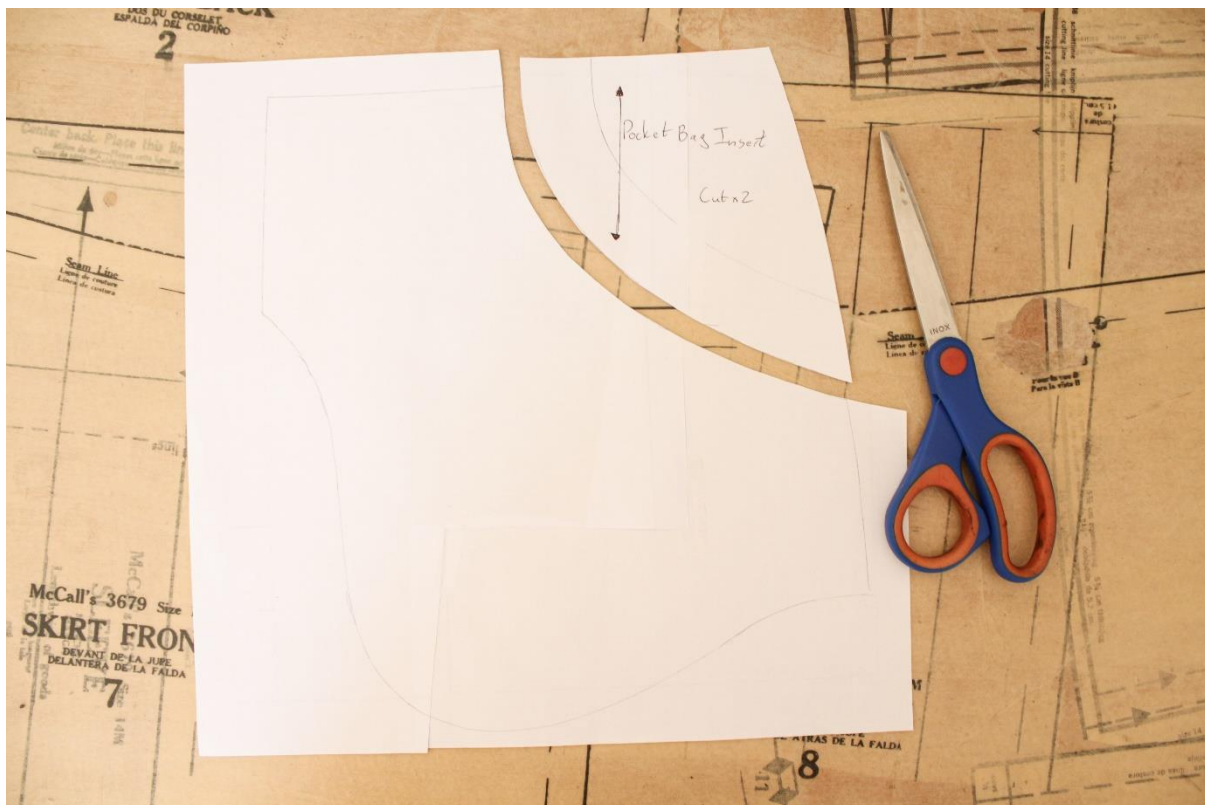
1. Trace off the **Pocket Bag** pattern piece on a separate piece of paper.



2. Lay the **Pocket Facing** piece on top of the traced off Pocket Bag piece.  
Copy the Pocket Opening.



3. Draw a curve 3cm out along this line.



4. Cut along the line from step 3 and cut out the Pocket Bag Insert. Remember to add the necessary information and keep the grain line the same as the Pocket Bag.