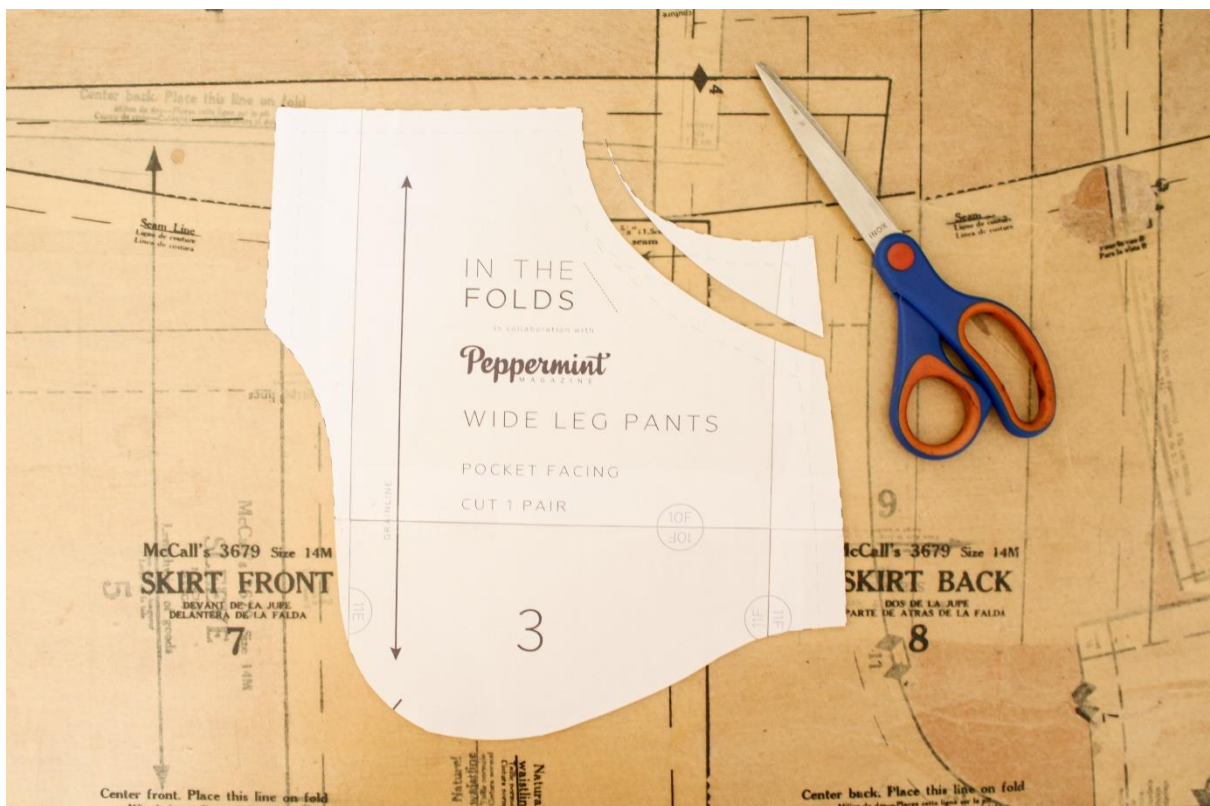


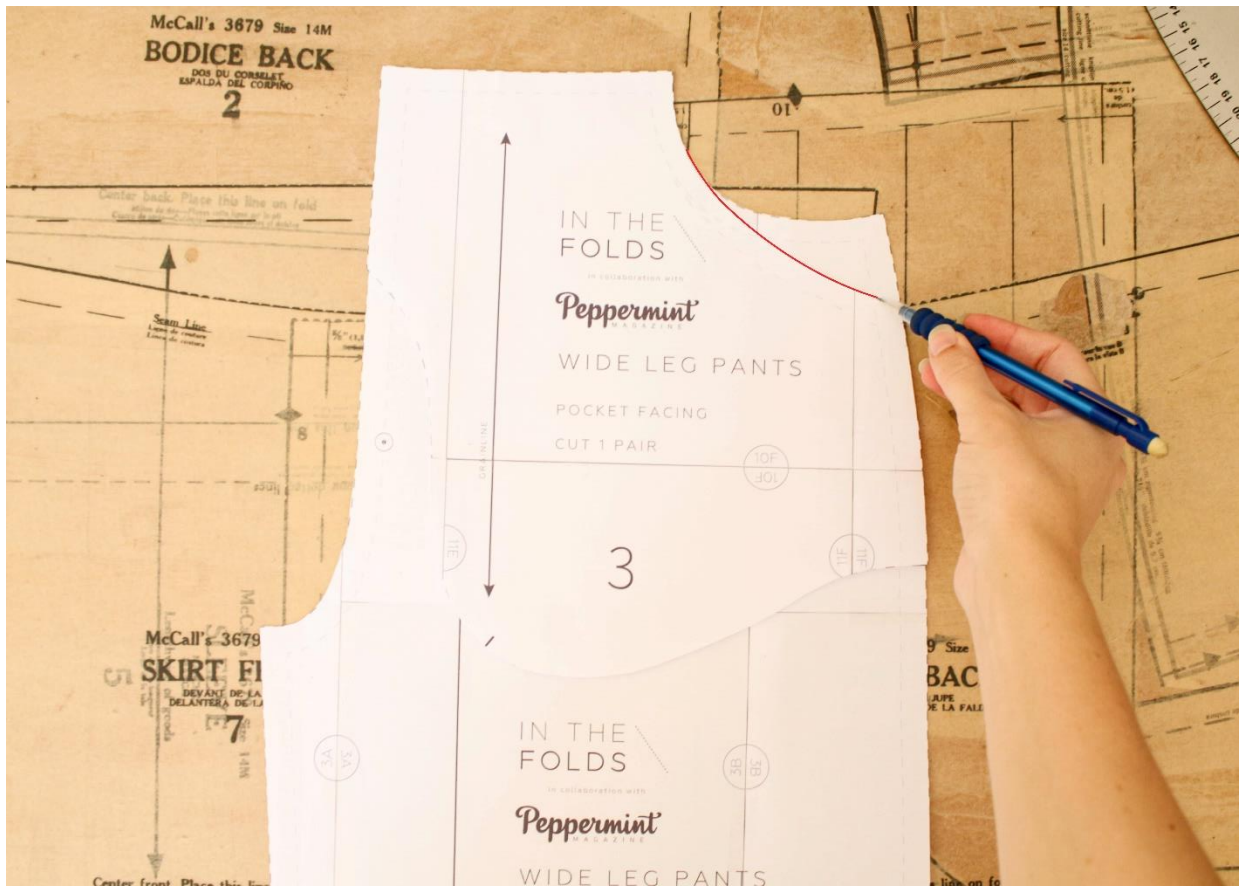
Front Pocket Shape adjustment



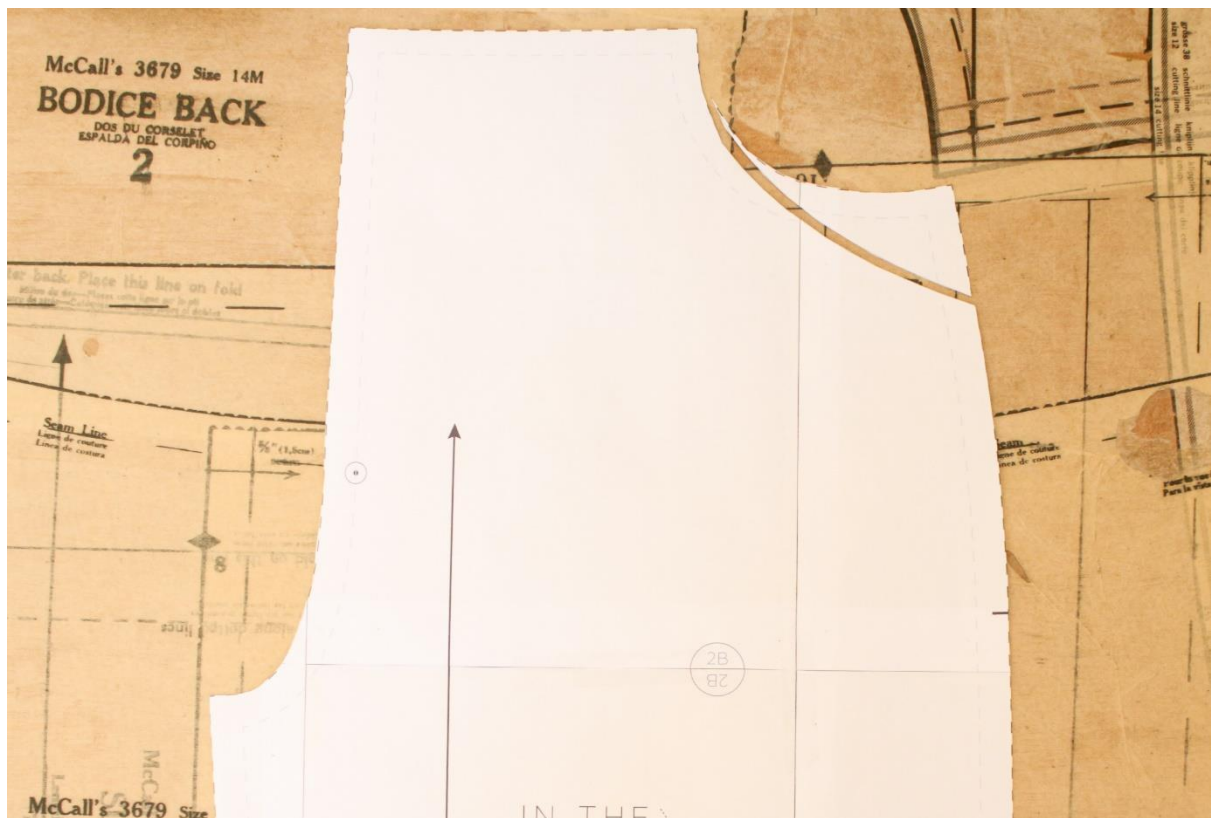
1. On the Pocket Facing, draw a gentler curve from the existing Pocket opening to lower on the Outseam. *I used a French Curve to help me achieve the shape but you could use a normal ruler to help achieve a similar effect.* My new Pocket Opening ends about 4cm lower on the Outseam than the original.



2. Cut along the new line.



3. Lay the Pocket Facing on to the Front Leg and copy above adjustment



4. Cut along the new line.