

How to calculate quantities for Bias Binding & Elastic

Bias Binding

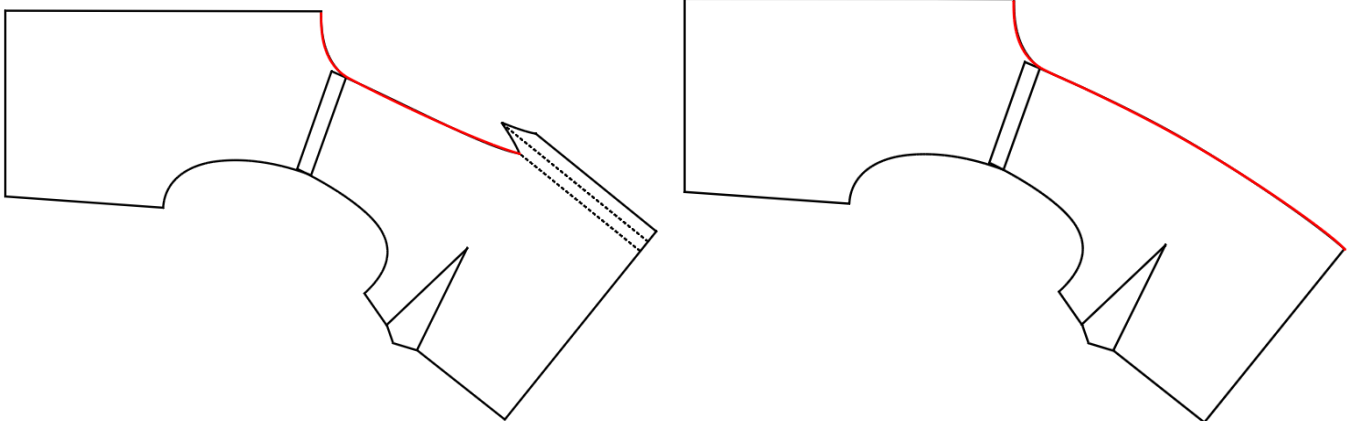
Underbust Channels

The pattern designer recommends cutting 2 casings/channels for the Underbust that are between 1m & 1.2m each in length and 4.5cm in width.

Use this to help you determine the quantity of bias binding you require for the Underbust channels.

Neckline

If, like me, you also want to bind the Neckline, simply measure the neckline on the pattern to see how much extra Bias Binding you require.



Hacked Button-up Version

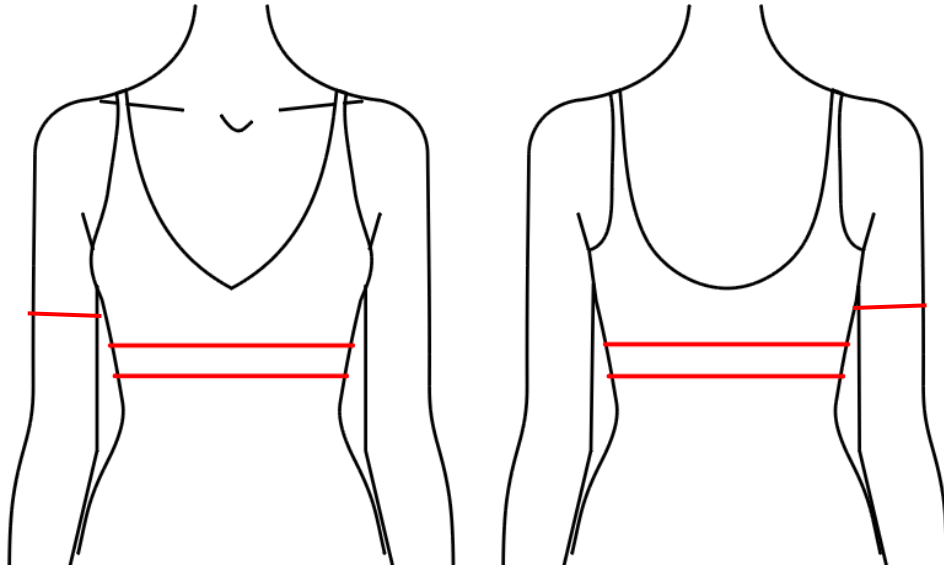
Original Tie Front Version

1. Match up the seam allowances of the Front & Back Shoulder seams.
2. Measure along the neckline
Hacked: from the Centre Back to the Centre Front line.
Original: from the Centre back all along the Front to the Hem.
3. Multiply the measurement by 2 for the quantity required.

Elastic Quantity

Measure around your torso where you want the channels to go.

Based on the designer's finished garment, these are the suggested areas to measure:



1. Measure around your torso just below the Underbust.
Add at least 10cm to this measurement. *This should accommodate the extra elastic needed to curve up around the Bust to the Front Neckline.*
2. Measure around your torso in the area between your Natural Waist and previous Underbust measurement.
3. Measure around the fullest part of your Bicep and multiply the measurement by 2.

I would recommend using these measurements as a starting point and getting a bit more elastic than they suggest.

As the elastic is going to be threaded through the casings (rather than stitched in place) you will be able to adjust the tightness before finishing off the garment.