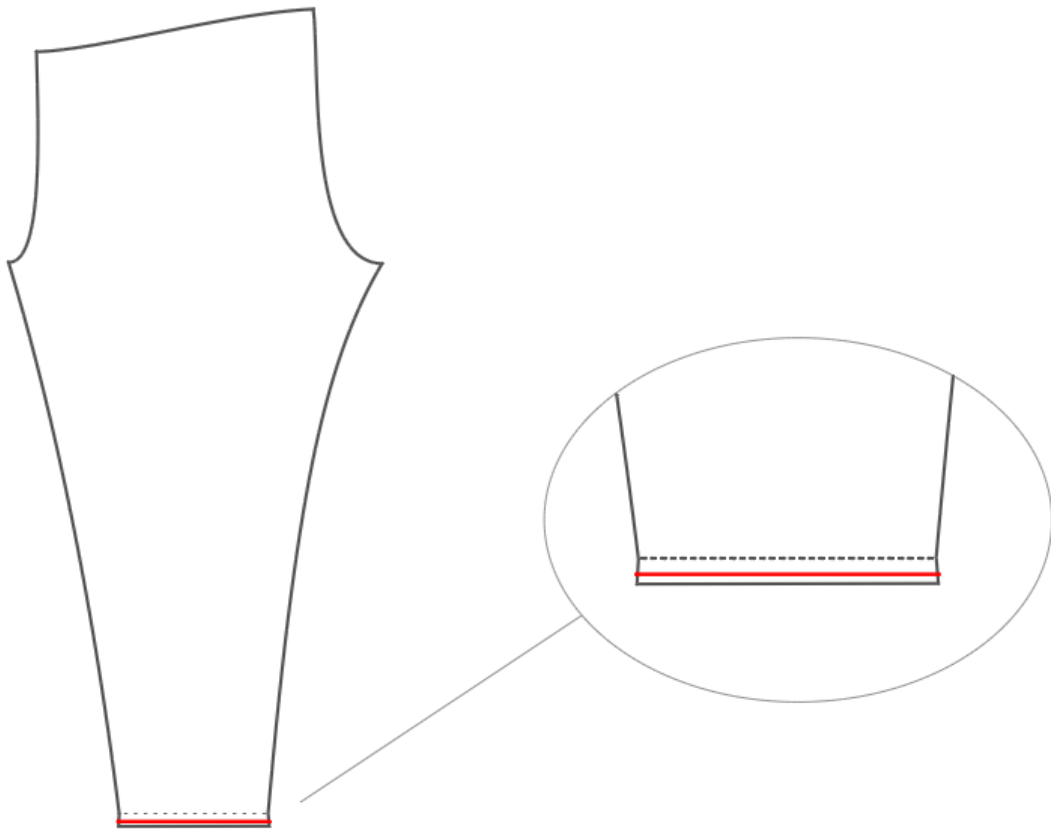
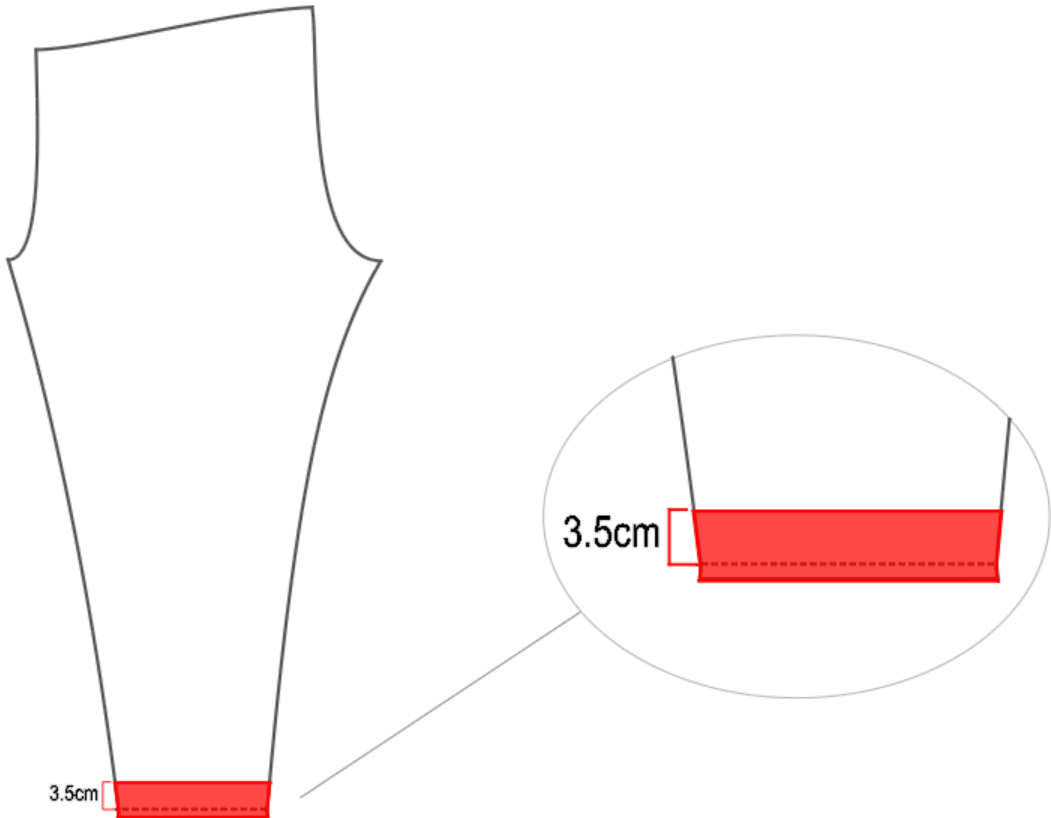


## Turn-up Hem Hack for Leggings



1. Shorten the Hem allowance to 1cm.

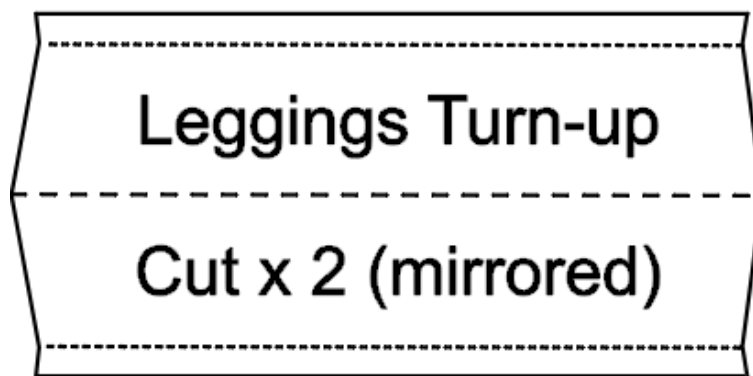


2. Trace off the turn-up, including the seam allowance.  
Measure up from the seam allowance, the desired height of the turn-up.

*I used 3.5cm*



3. Mirror the shape **above** the traced off shape.  
The line between the two shapes will be the fold line.  
The 1cm seam allowance is already included.



4. You'll end up with a pattern piece like this.  
You'll need to cut 2 mirrored pieces to match each leg.