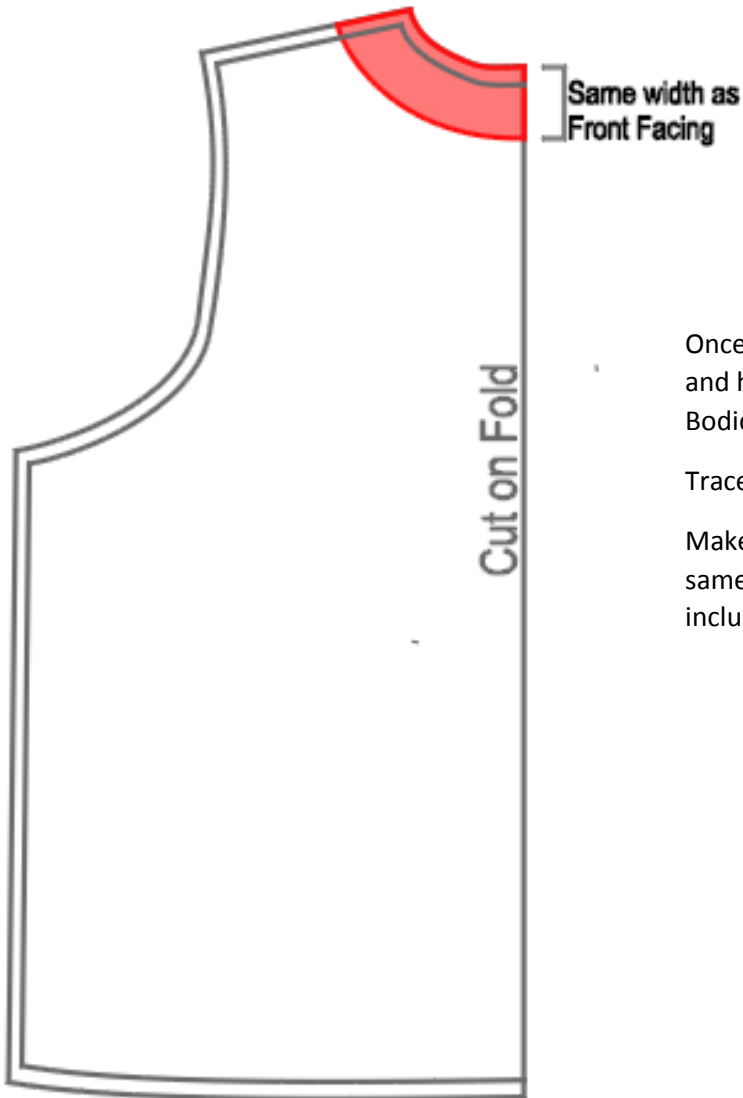


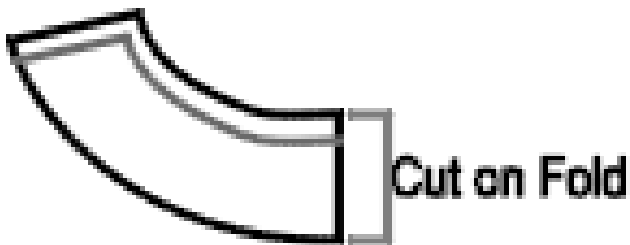
How to draft the Back Facing



Once you have added your preferred seam and hem allowances and cut out the Back Bodice piece:

Trace a facing off from around the neckline.

Make the width of the Back Facing the same as the width of the Front Facing, including seam allowances.



The Back Facing piece will look like this.

The seam allowances will already be included.

Remember to cut 1 on the Fold