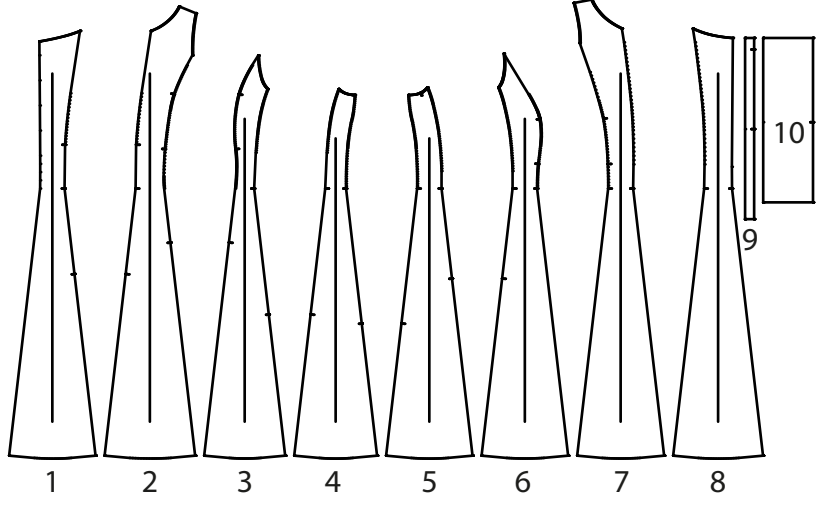


# L 8 Princess Line Dress



Wichtig: Alle Schnittteile sind ohne Nahtzugabe, falls nichts anderes vermerkt ist!

Important: All Patterns are without seam allowances, unless otherwise indicated!

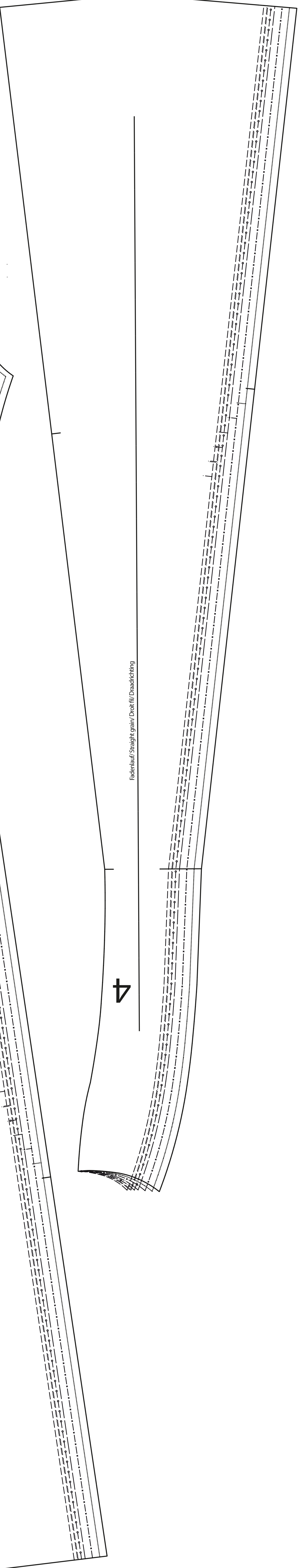
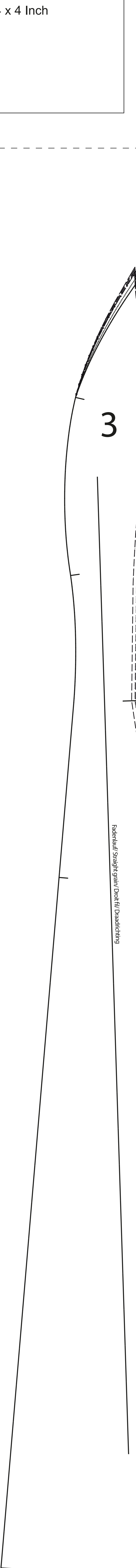
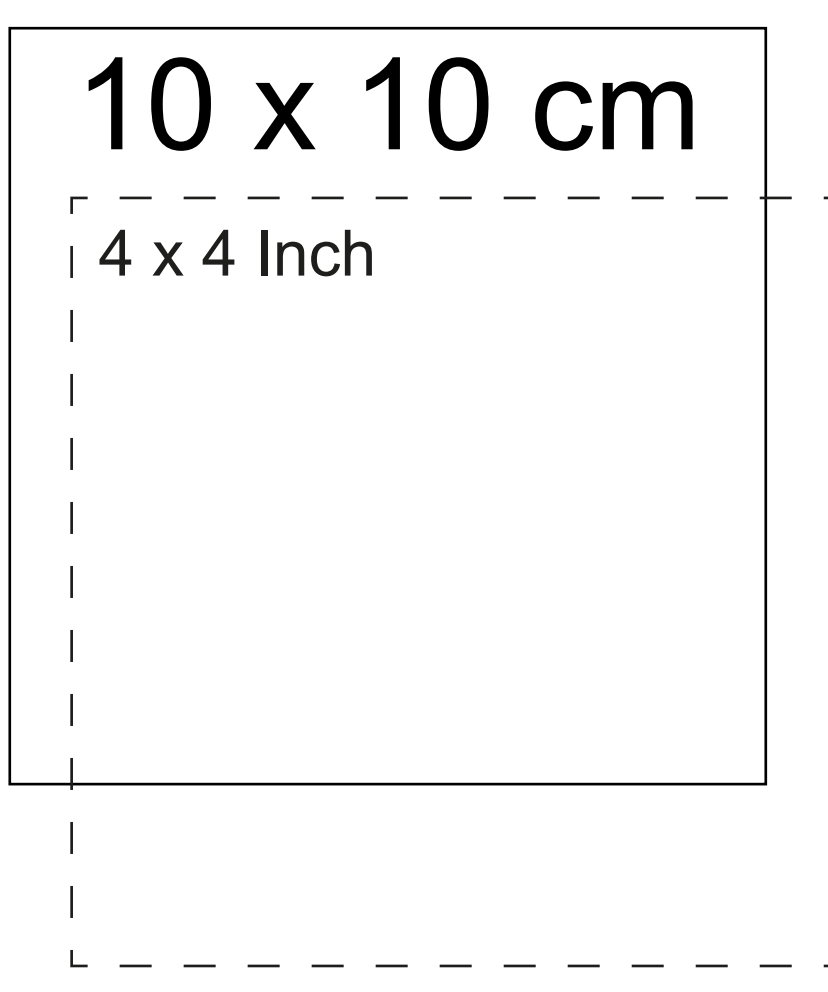
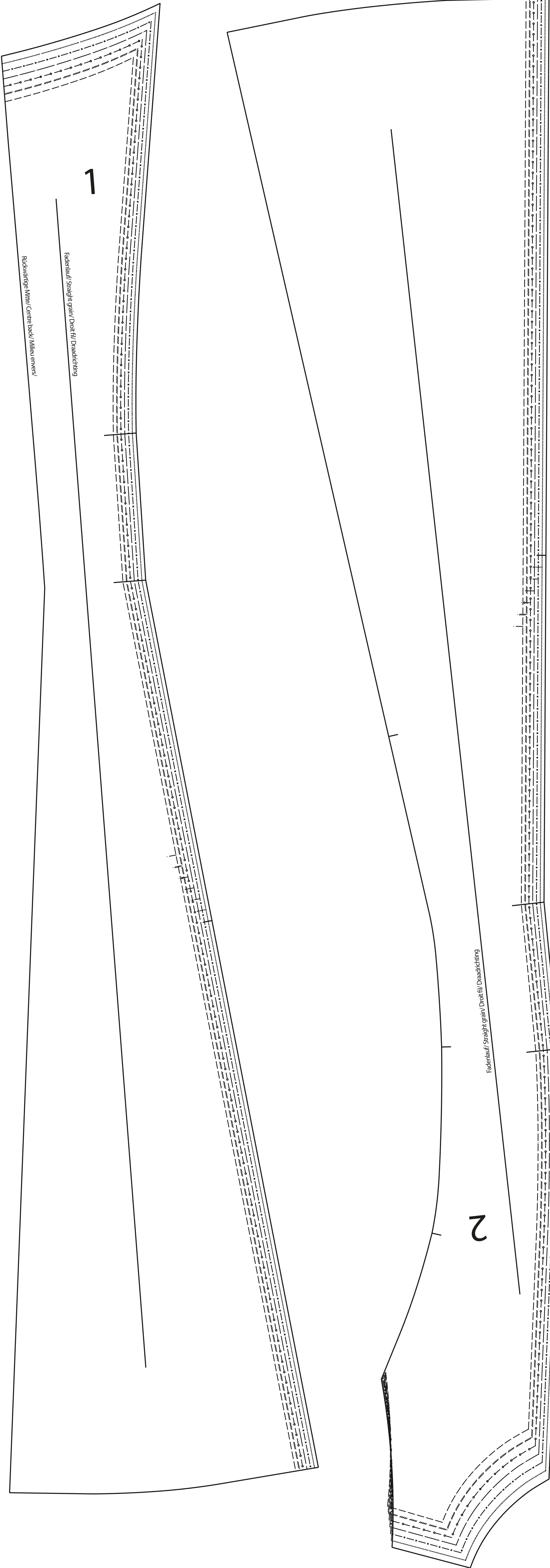
Important: Toutes découpes sont sans surplus de couture (sauf mention contraire)!

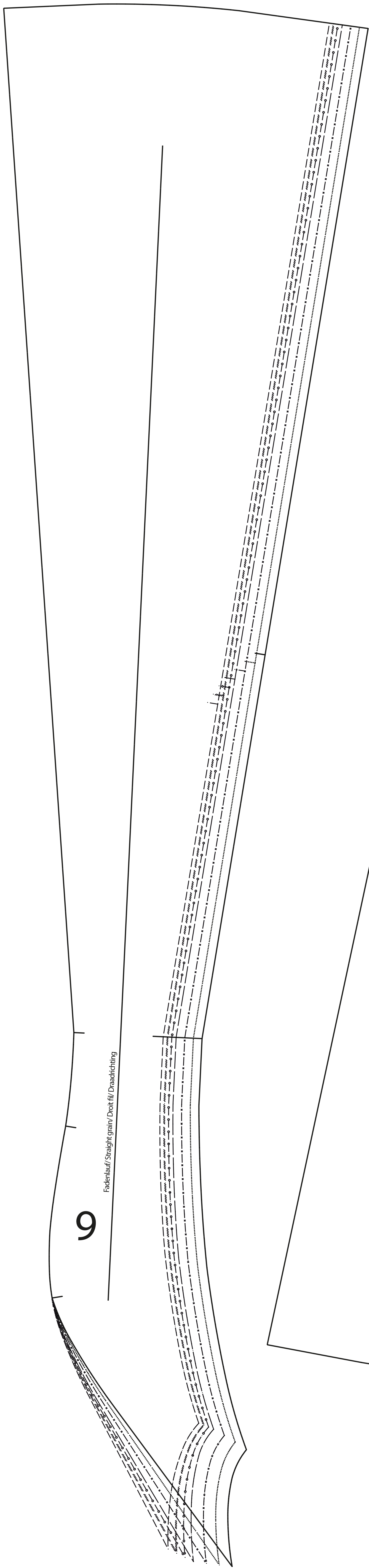
Attentie: Alle patroondeelen zijn zonder naadtoeslag, tenzij anders vermeld

Für Körpergröße/for height/pour la taille/Maten voor lichaamsmaat 158 cm						
Größe/ Size/ Taille/ Maat	36	38	40	42	44	46
Oberweite/Bust/ Patrine/ Boevenwijdte	84	88	92	96	102	108
Tallenswiler/Waist/Taille/ Tallenwijdte	67	71	75	79	85	91
Hüftweite/Hip/Hanche/Heuvenwijdte	92	96	100	104	110	116
Vord. Tallenl./ Front waist length/ Longueur taille devant/ Tallenlengte voor	43	44	45	46	47	48
Rückw. Tallenl./ Back waist length/ Longueur taille dos/ Ruglengte tot taille	41	41	42	42	42	43

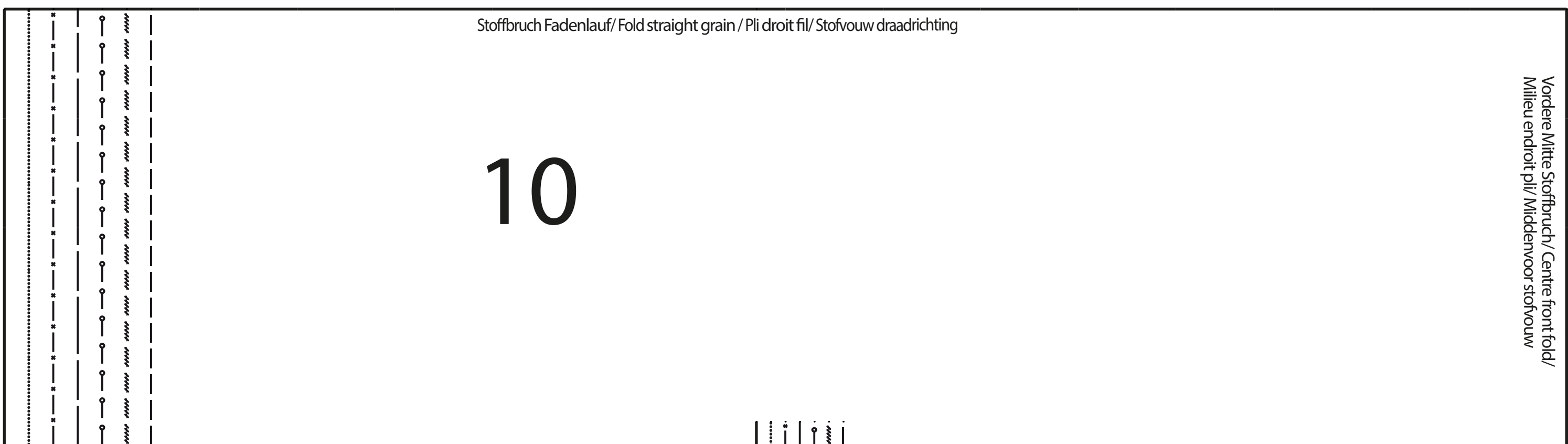
Legende/ Legend/ Légend						
Größe/ Size/ Taille/ Maat	36	38	40	42	44	46
Talle	36	38	40	42	44	46
Bust	84	88	92	96	102	108
Hip	92	96	100	104	110	116
Front waist length	43	44	45	46	47	48
Back waist length	41	41	42	42	42	43





Fadenlauf / Straight grain / Droit fil / Draadrichting

9



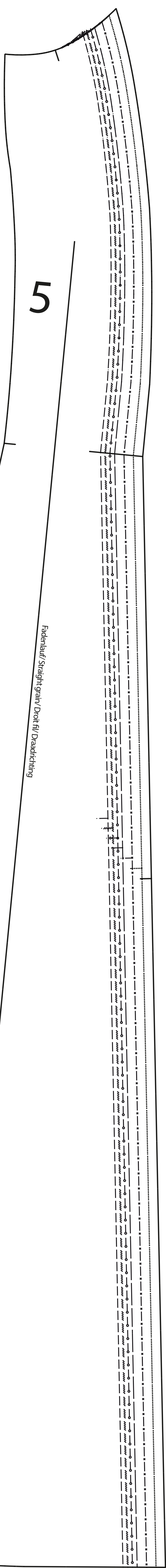
10

Stoffbruch Fadenlauf / Fold straight grain / Plf droit fil / Stofvouw draadrichting

Vordere Mitte / Centre front / Middelvoort / Middenvoor

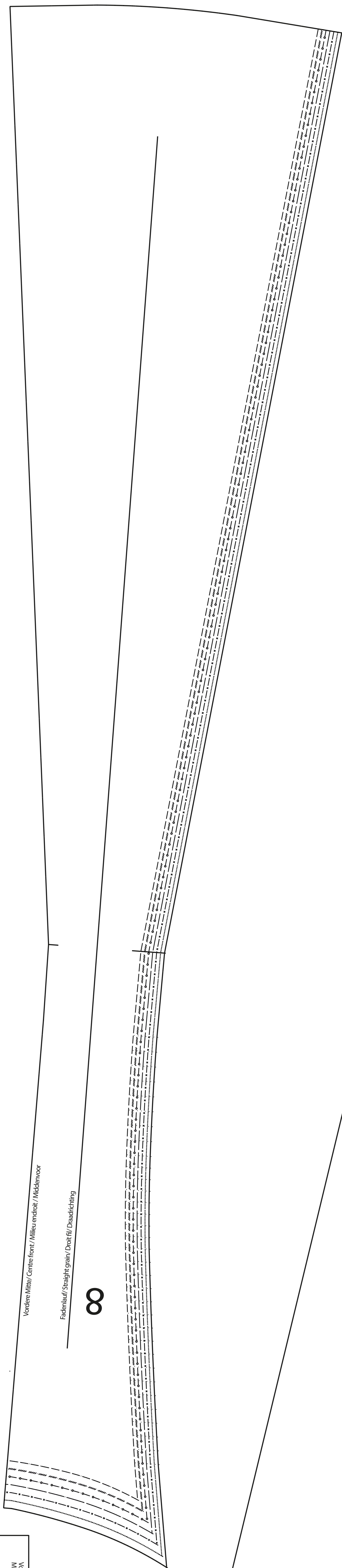
9

Fadenlauf / Straight grain / Droit fil / Draadrichting



5

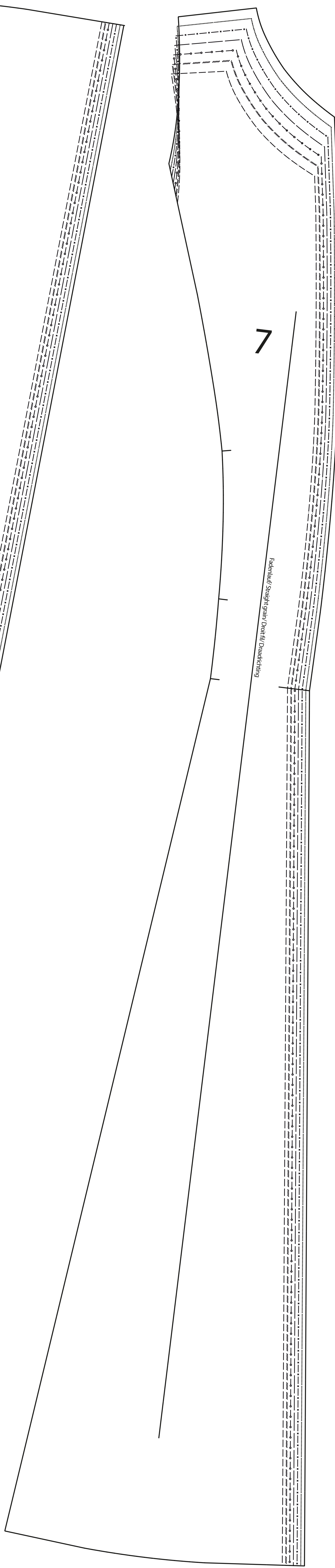
Fadenlauf / Straight grain / Droit fil / Draadrichting



Vordere Mitte / Centre front / Middelvoort / Middenvoor

Fadenlauf / Straight grain / Droit fil / Draadrichting

8



7

Fadenlauf / Straight grain / Droit fil / Draadrichting