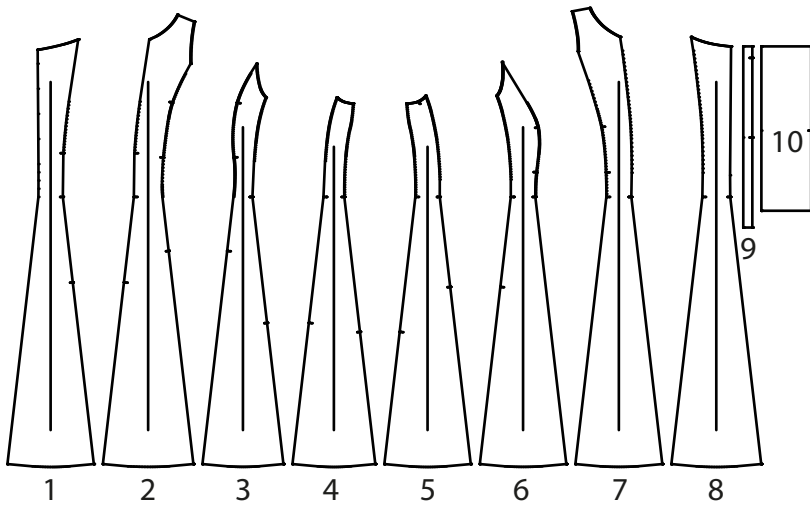
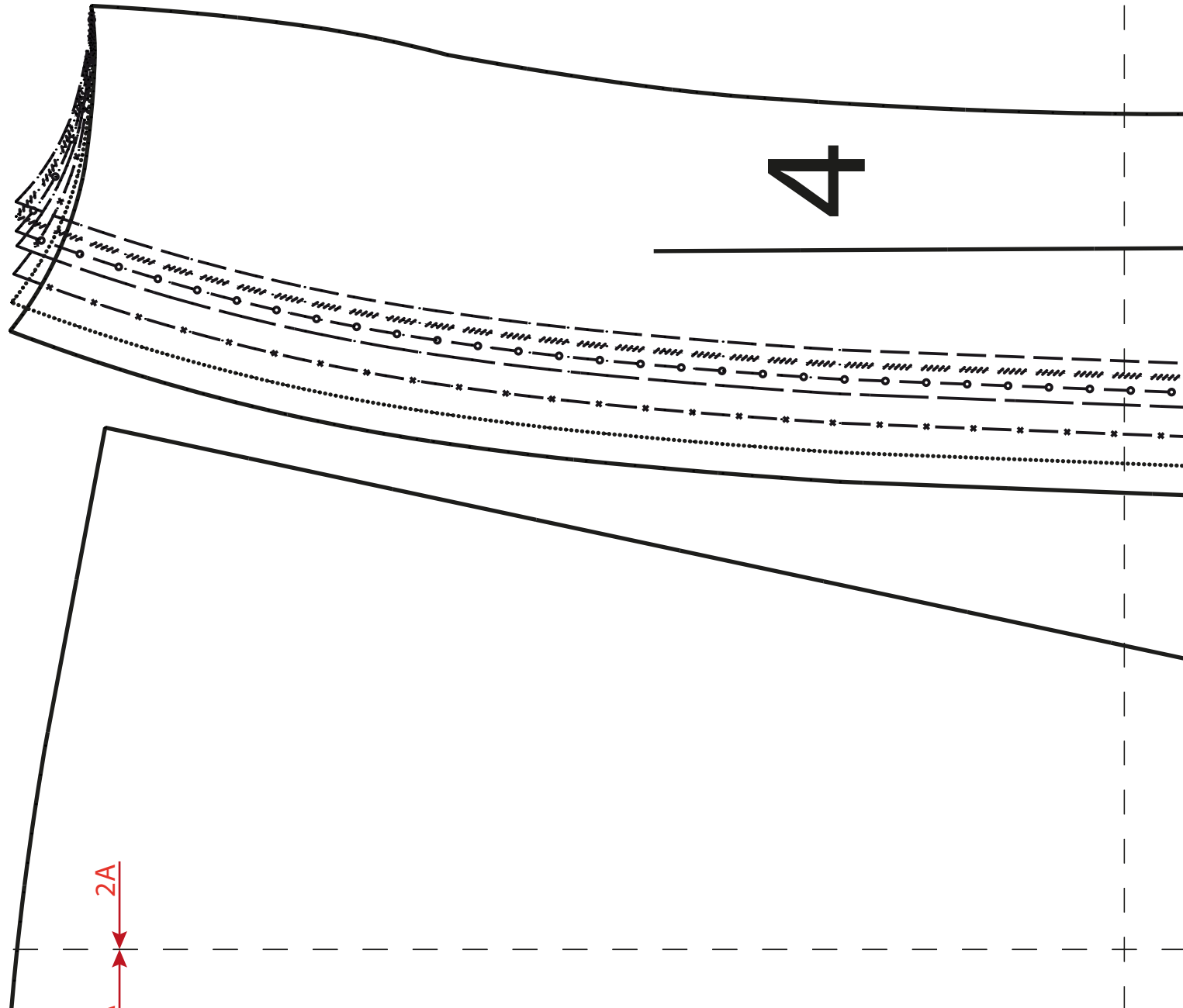


L 8 Princess Line Dress



1A



Wichtig: Alle Schnittteile sind ohne Nahtzugabe,
falls nichts anderes vermerkt ist!

Important: All Patterns are without seam
allowances, unless otherwise indicated !

Important: Toutes découpes sont sans surplus
de couture (sauf mention contraire)!

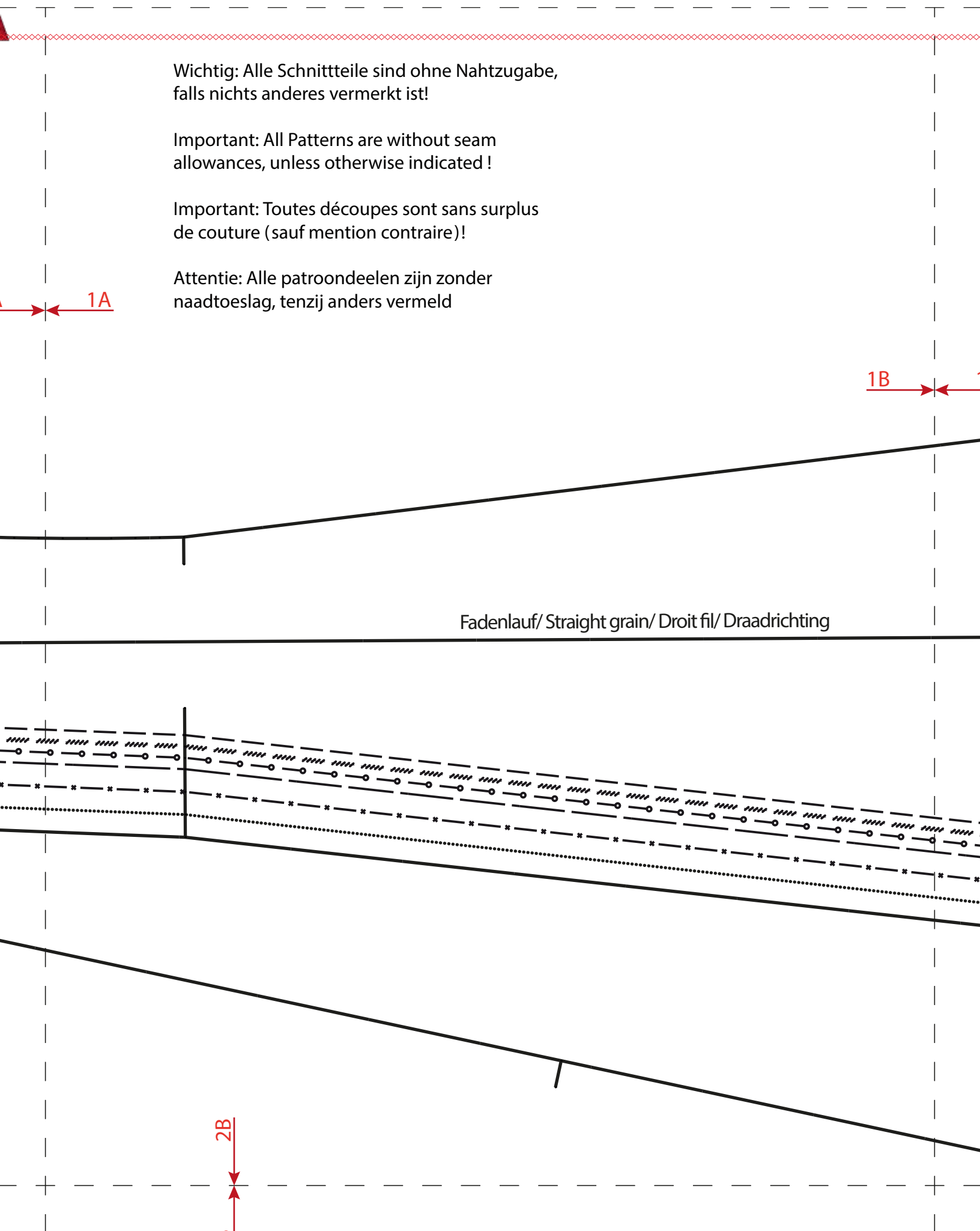
Attentie: Alle patroondeelen zijn zonder
naadtoeslag, tenzij anders vermeld

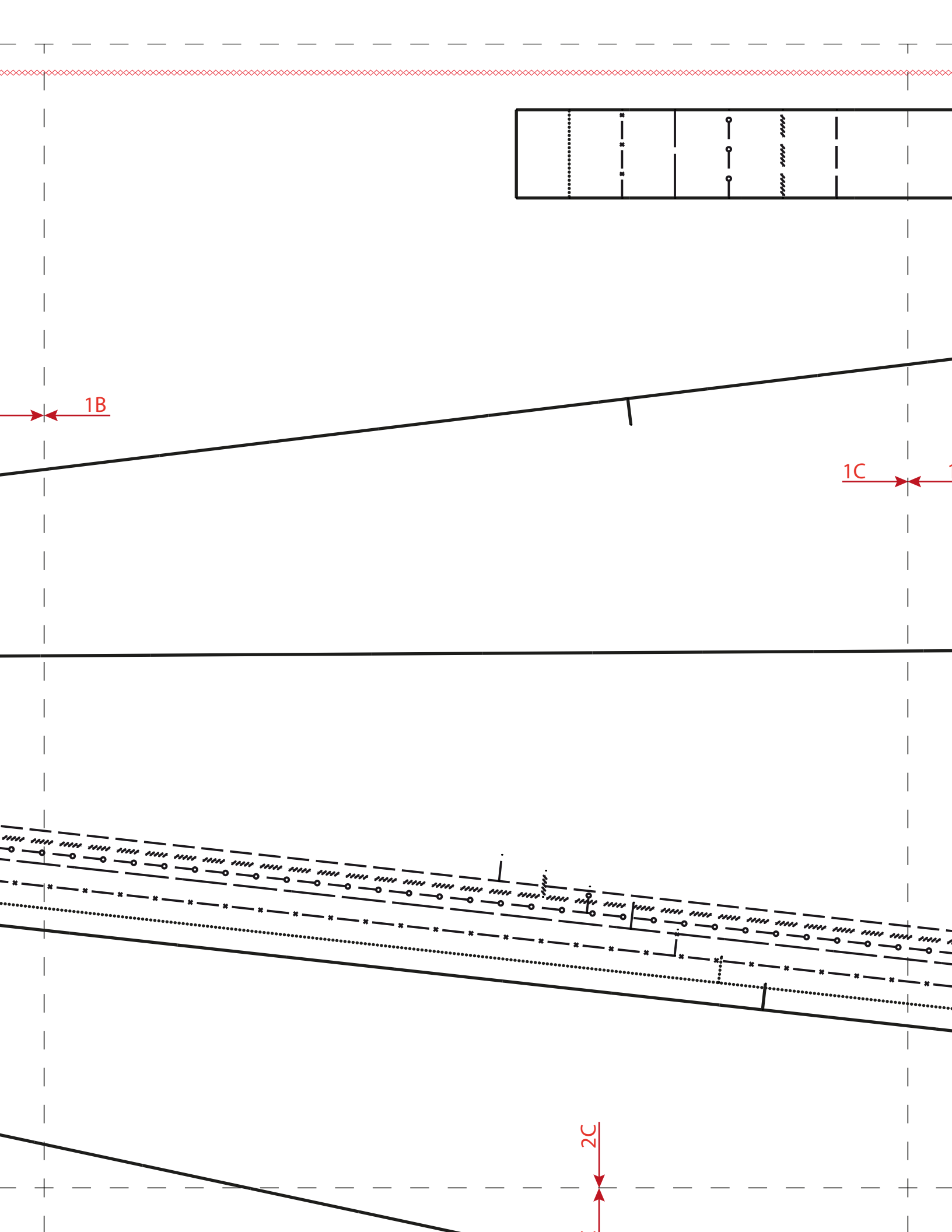
1A

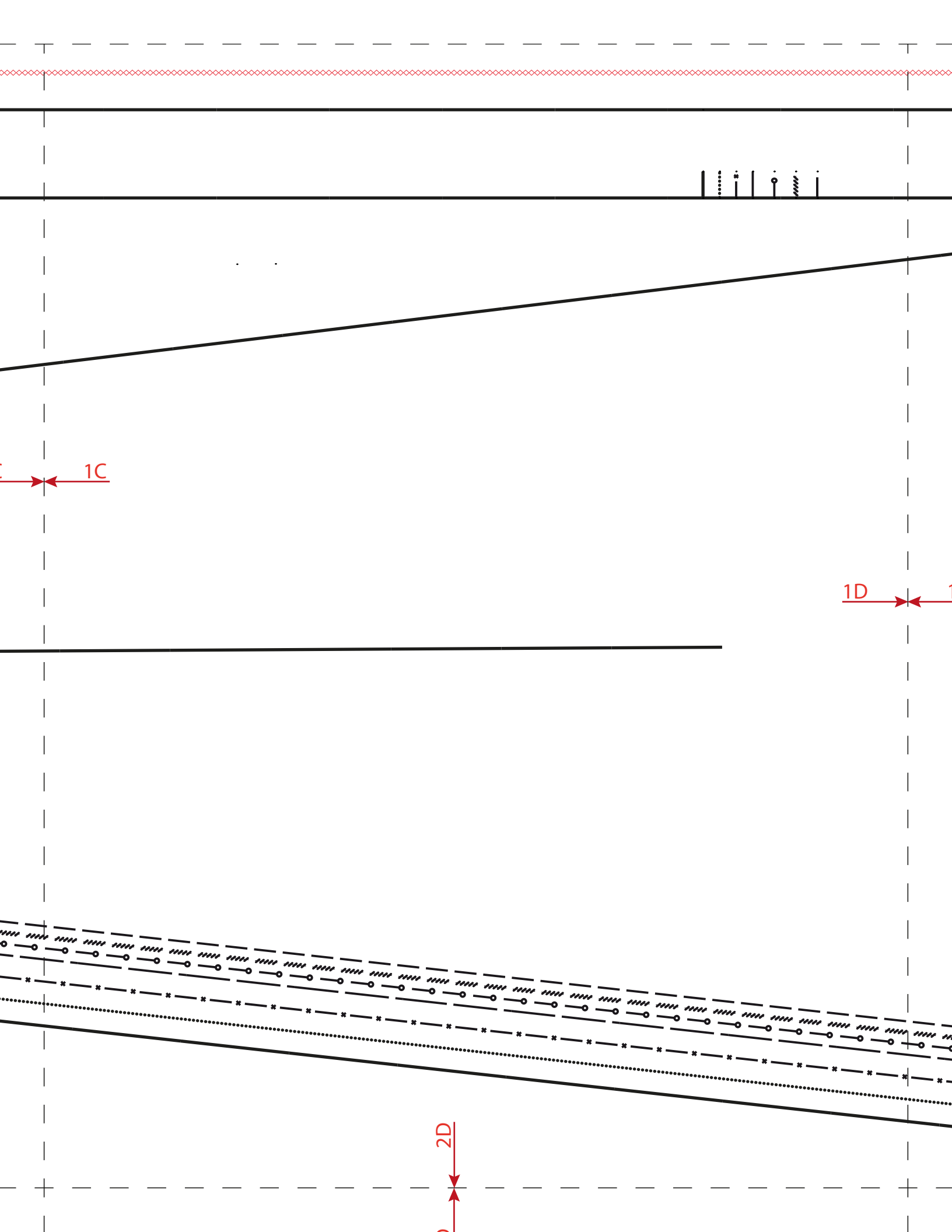
1B

Fadenlauf/ Straight grain/ Droit fil/ Draadrichting

2B







-
- ⋯
- ⊙
- ▨
-
- ⋅

1C

1D

2D

Fadenlauf

straight grain

Droit fil

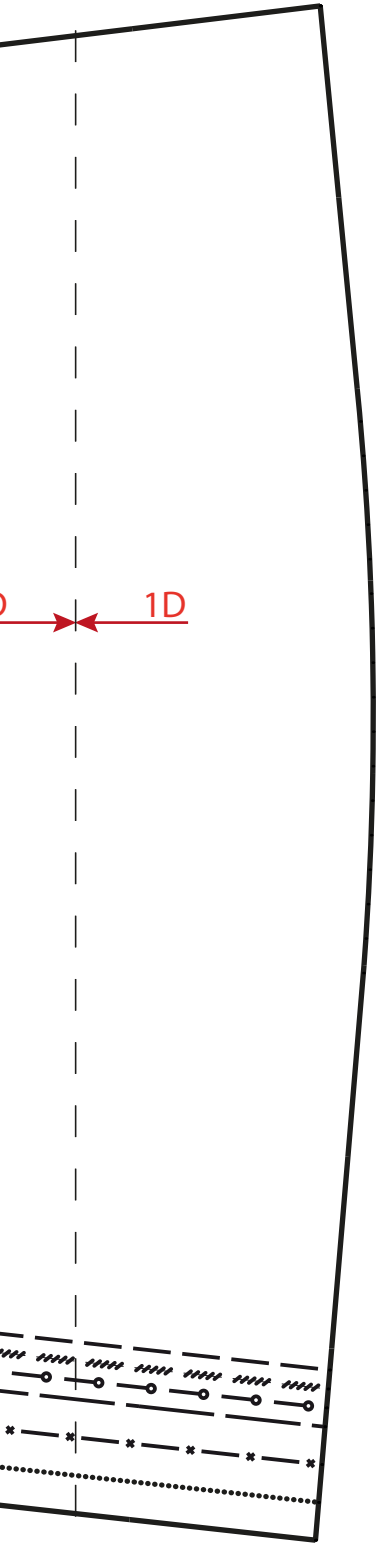
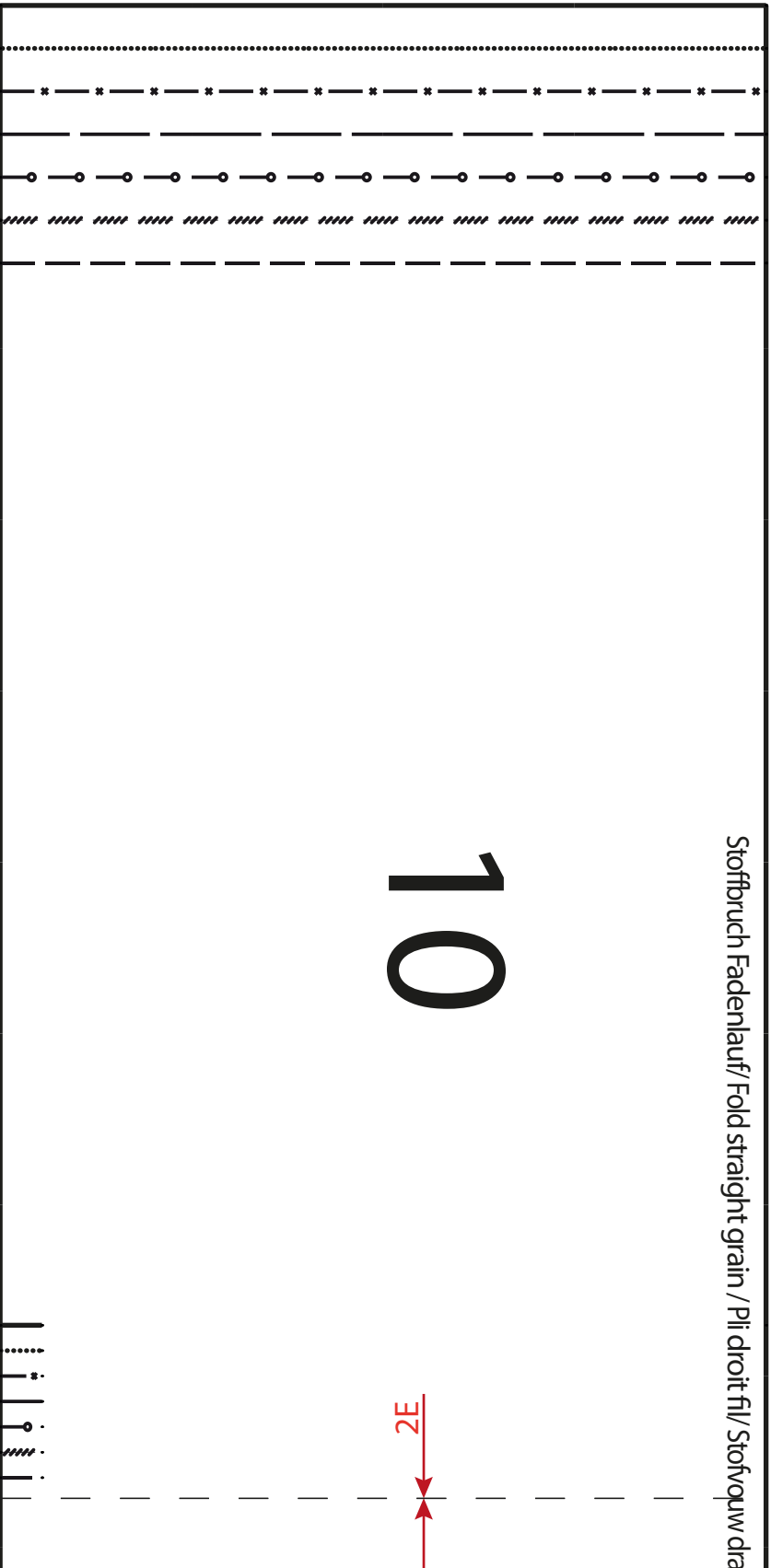
Draad-richting

6

Stoffbruch Fadenlauf / Fold straight grain / Pli droit fil / Stoffouw dra

10

2E



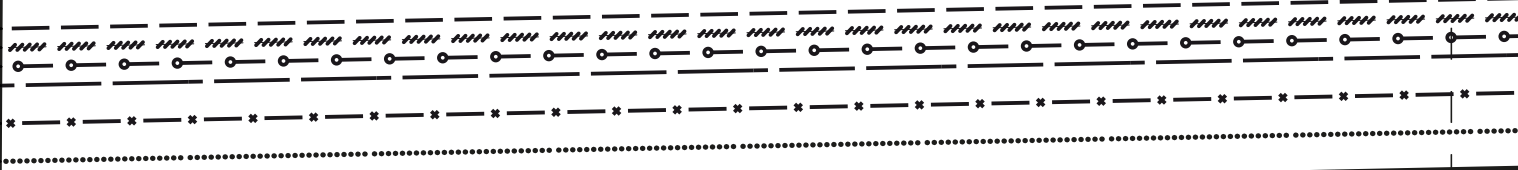
2A

Für Körpergröße/ for height/ pour la taille/ Maten voor lichaamsgrootte 168 cm							
Größe/ Size/ Taille/ Maat	36	38	40	42	44	46	48
Oberweite/Bust/ Poitrine/ Bovenwijdte	84	88	92	96	102	108	114
Tailenweite/Waist/ Taille/ Tailenwijdte	67	71	75	79	85	91	97
Hüftweite/ Hip/ Hanche/ Heupwijdte	92	96	100	104	110	116	122
Vord. Tailenlg./ Front waist length/ Longueur taille devant/ Taillelengte voor	43	44	45	46	47	48	49
Rückw. Tailenlg./ Back waist lenth/ Longueur taille dos/ Ruglengte tot taille	41	41	42	42	42	42	43

Legende/ Legend/ Légend

Größe/	-----	36
Size/	-----	36
Taille/	//// //// //// ////	38
Maat	—○—○—○	40
	-----	42
	— * — * — *	44
	46
	=====	48

For height 66 inch:	Taille	36	38	40	42	44	46	48
Bust		33,1	34,6	36,2	37,8	40,2	42,5	44,9
Waist		26,4	28,0	29,5	31,1	33,5	35,8	38,2
Hip		36,2	37,8	39,4	40,9	43,3	45,7	48,0
Front waist length		17,0	17,3	17,7	18,0	18,5	18,9	19,2
Back waist lenth/		16,0	16,0	16,5	16,5	16,5	16,5	16,9

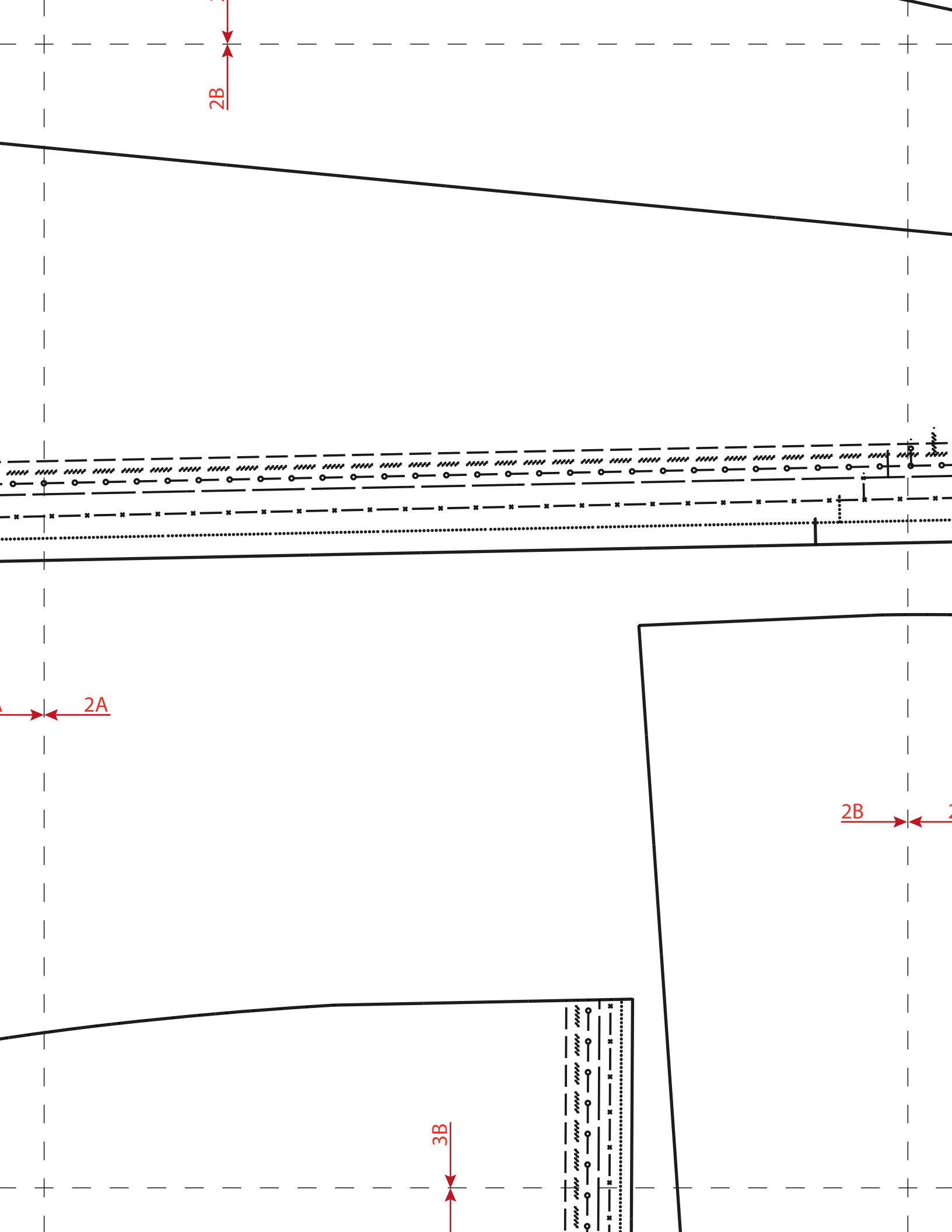


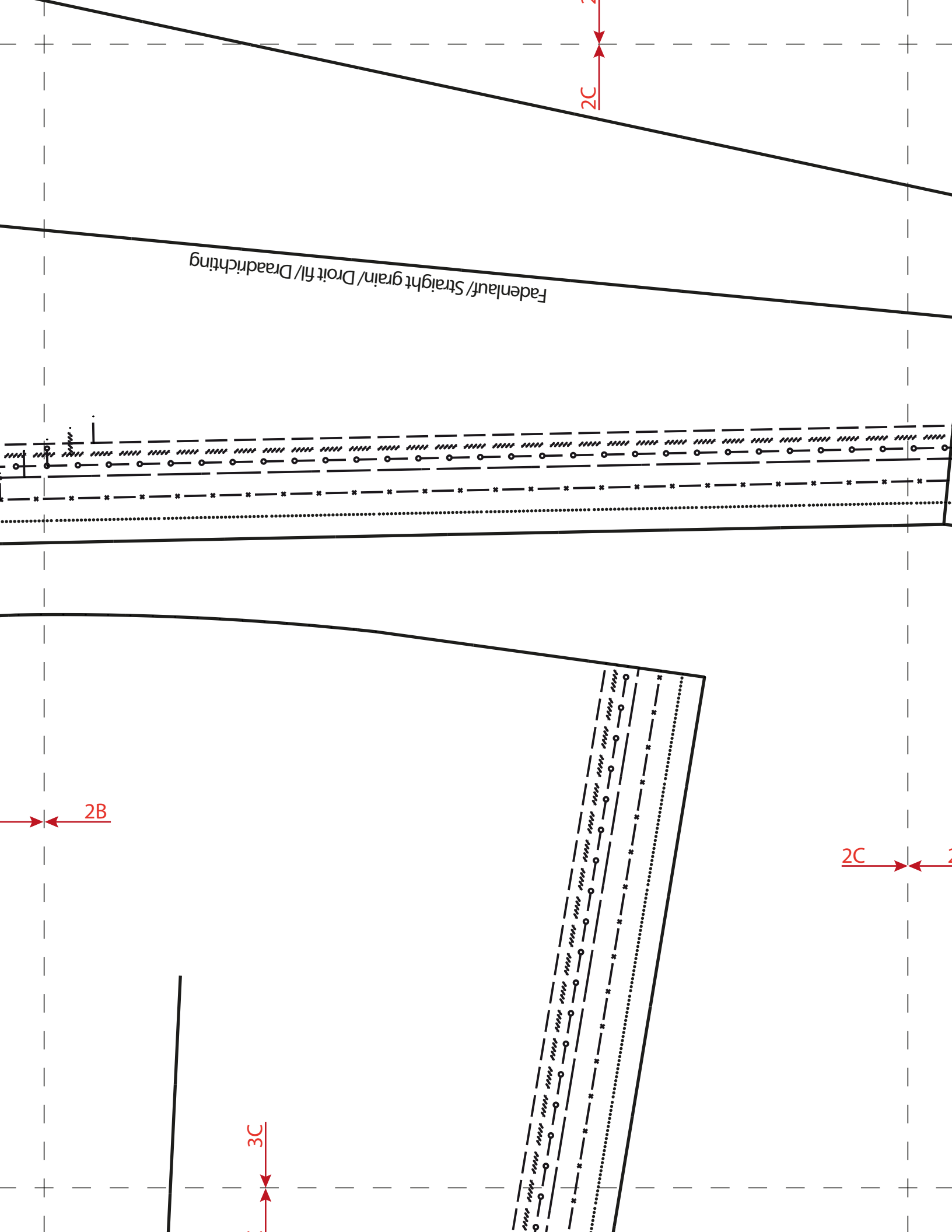
10 x 10 cm

4 x 4 Inch

2A

3A





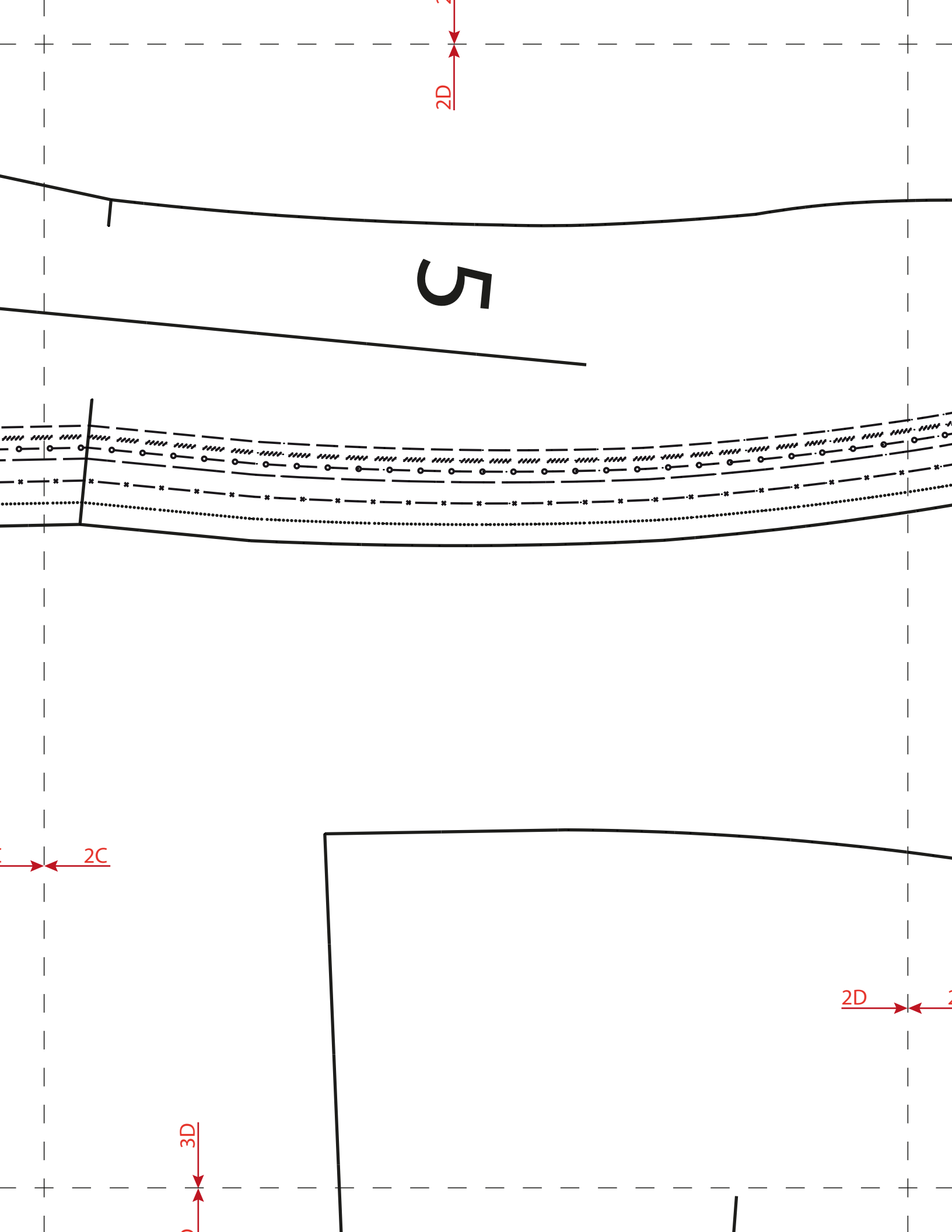
Fadenlauf/Straight grain/Droit fil/Draadrichting

$2C$

$2B$

$2C$

$3C$



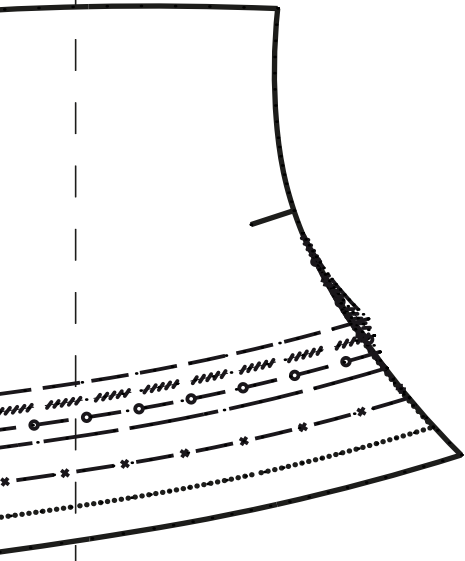
5

2D

2C

3D

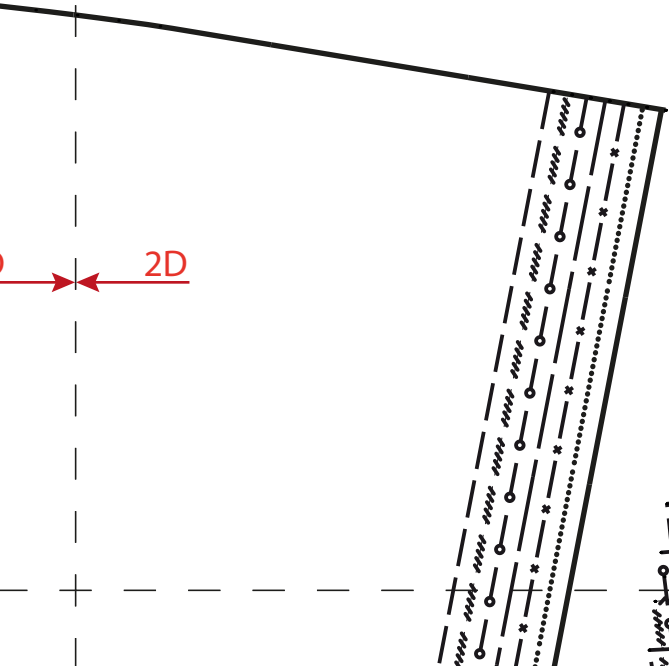
2D



Vordere Mitte Stoffbruch/ Centre front fold/
Milieu endroit pli/ Middenvoor stofvouw

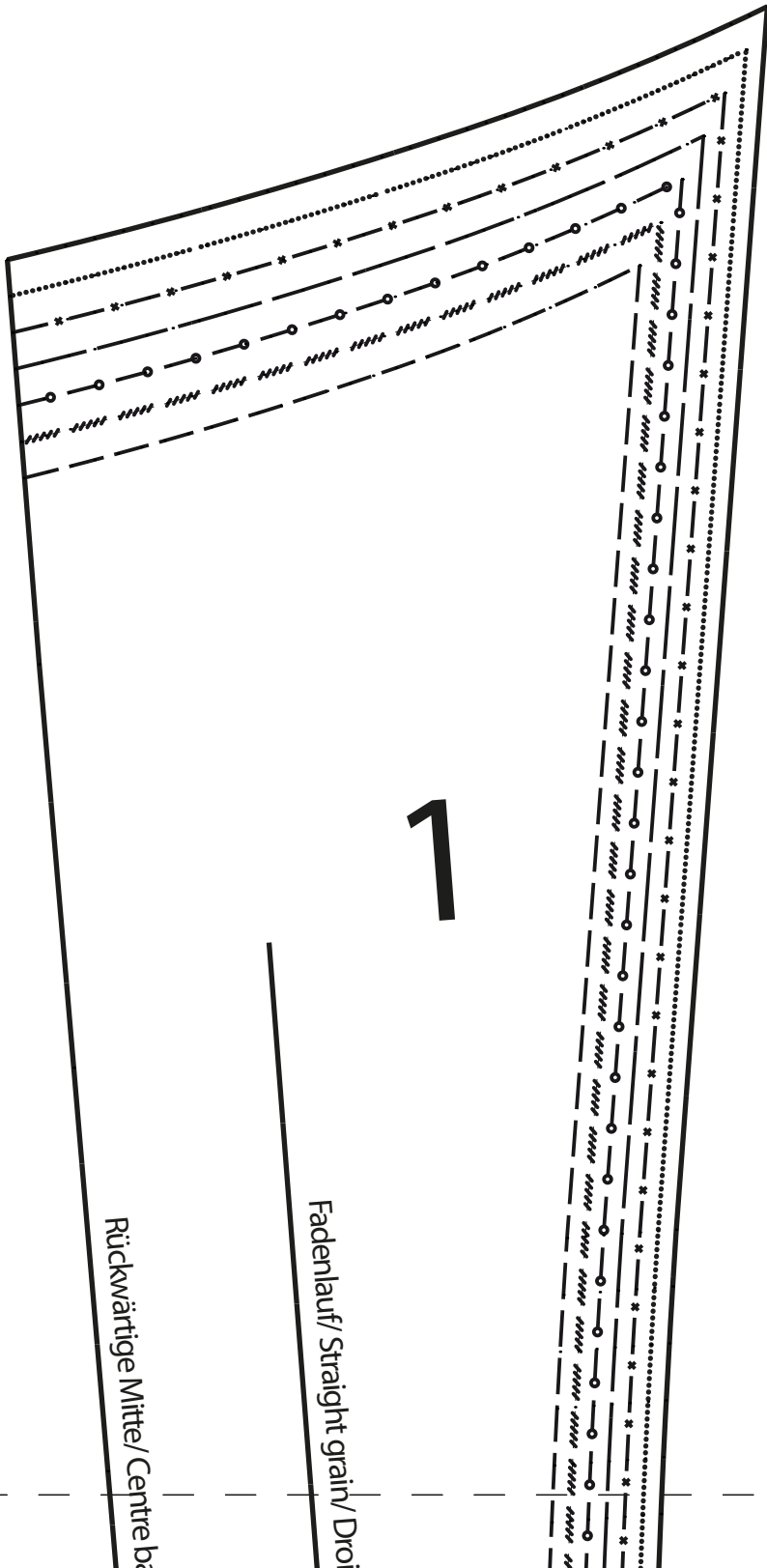
2E

Stofvouw draadrichting



3E

2D



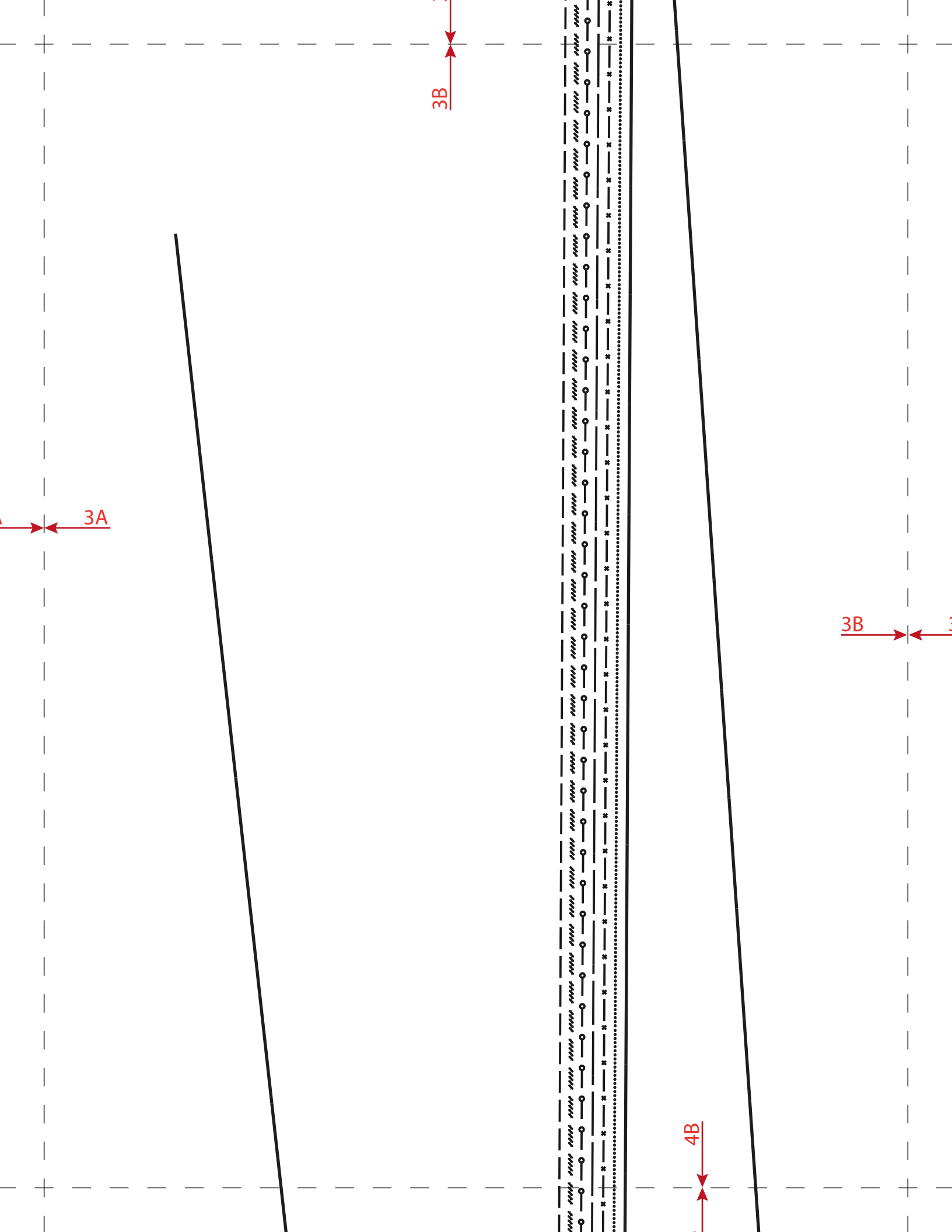
Rückwärtige Mitte/ Centre back

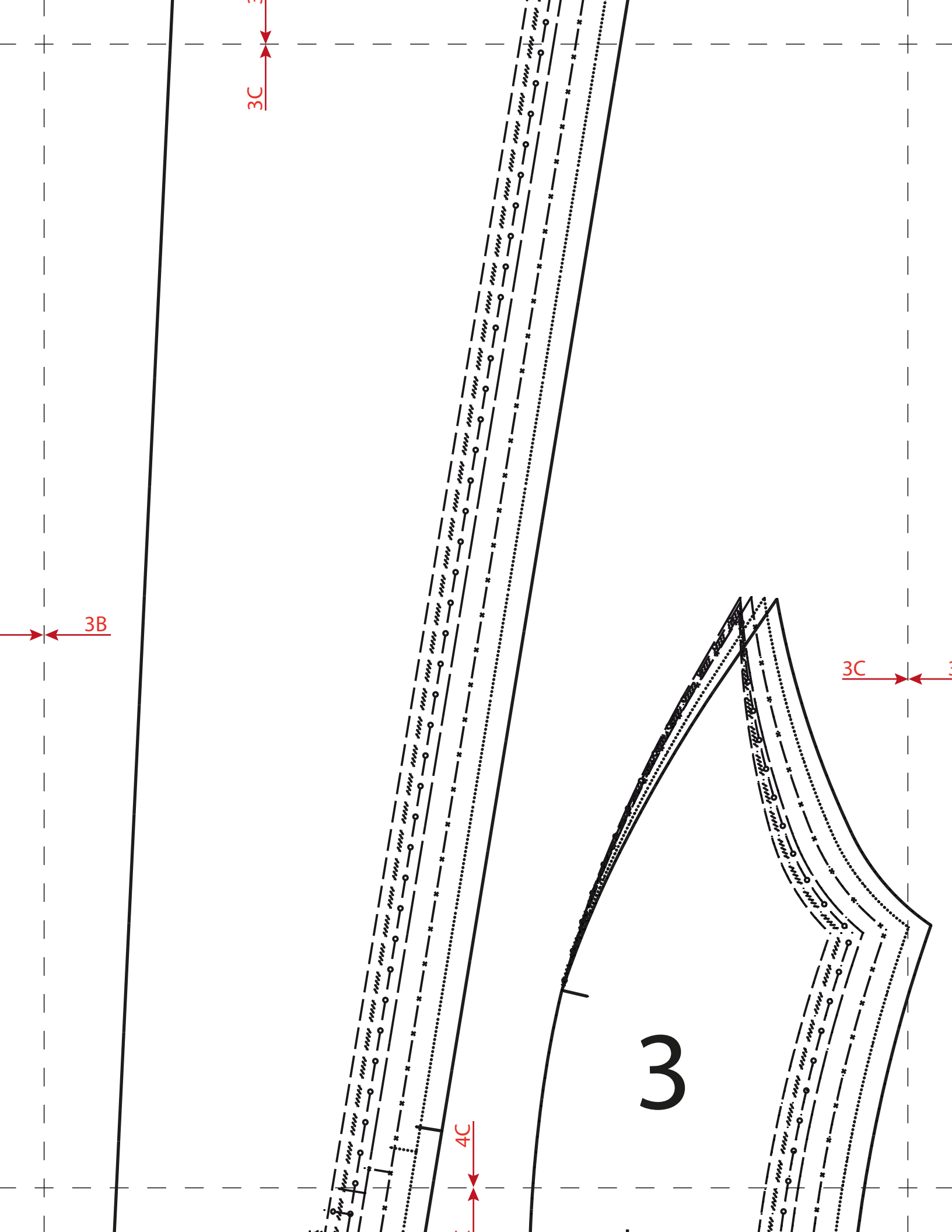
Fadenlauf/ Straight grain/ Droi

3A

4A

3A





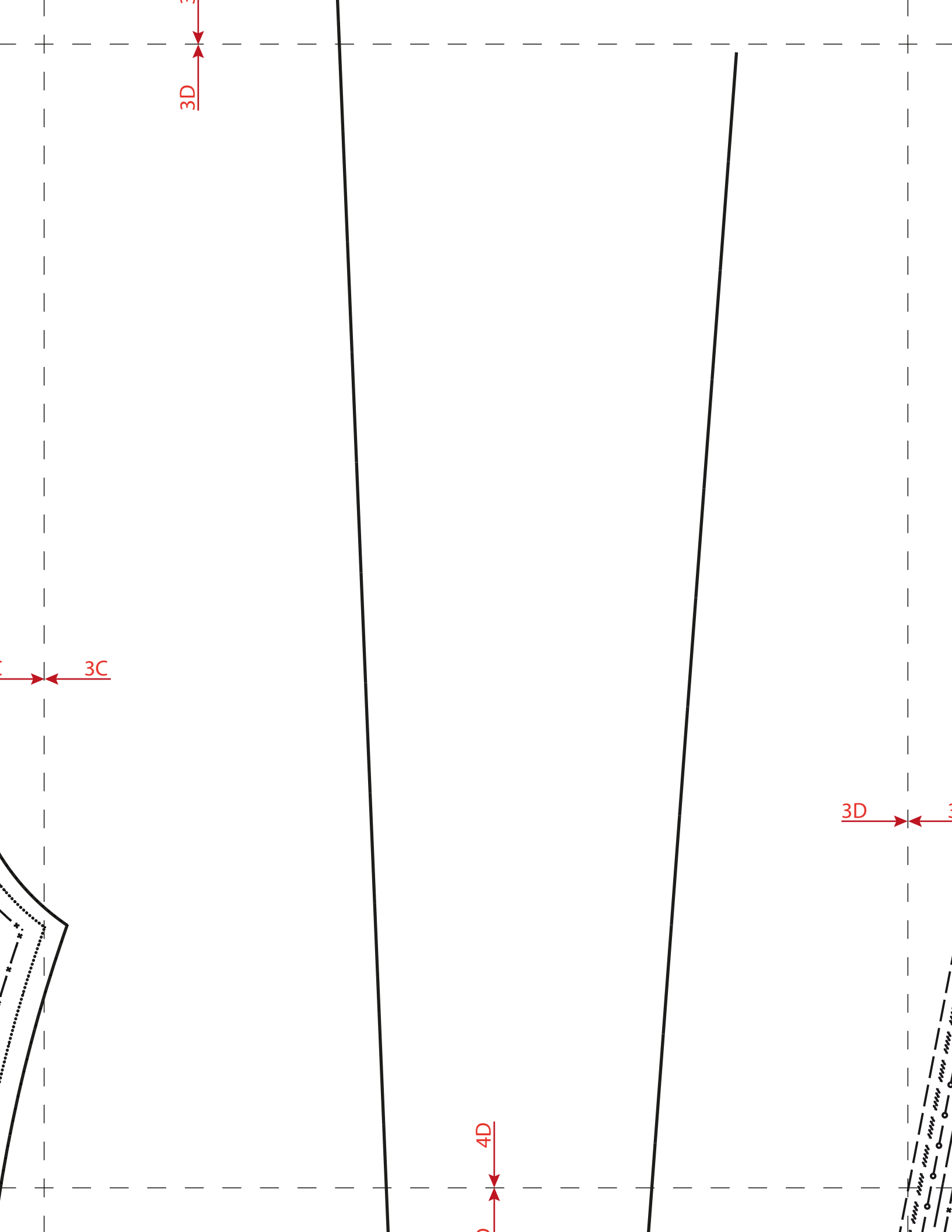
3B

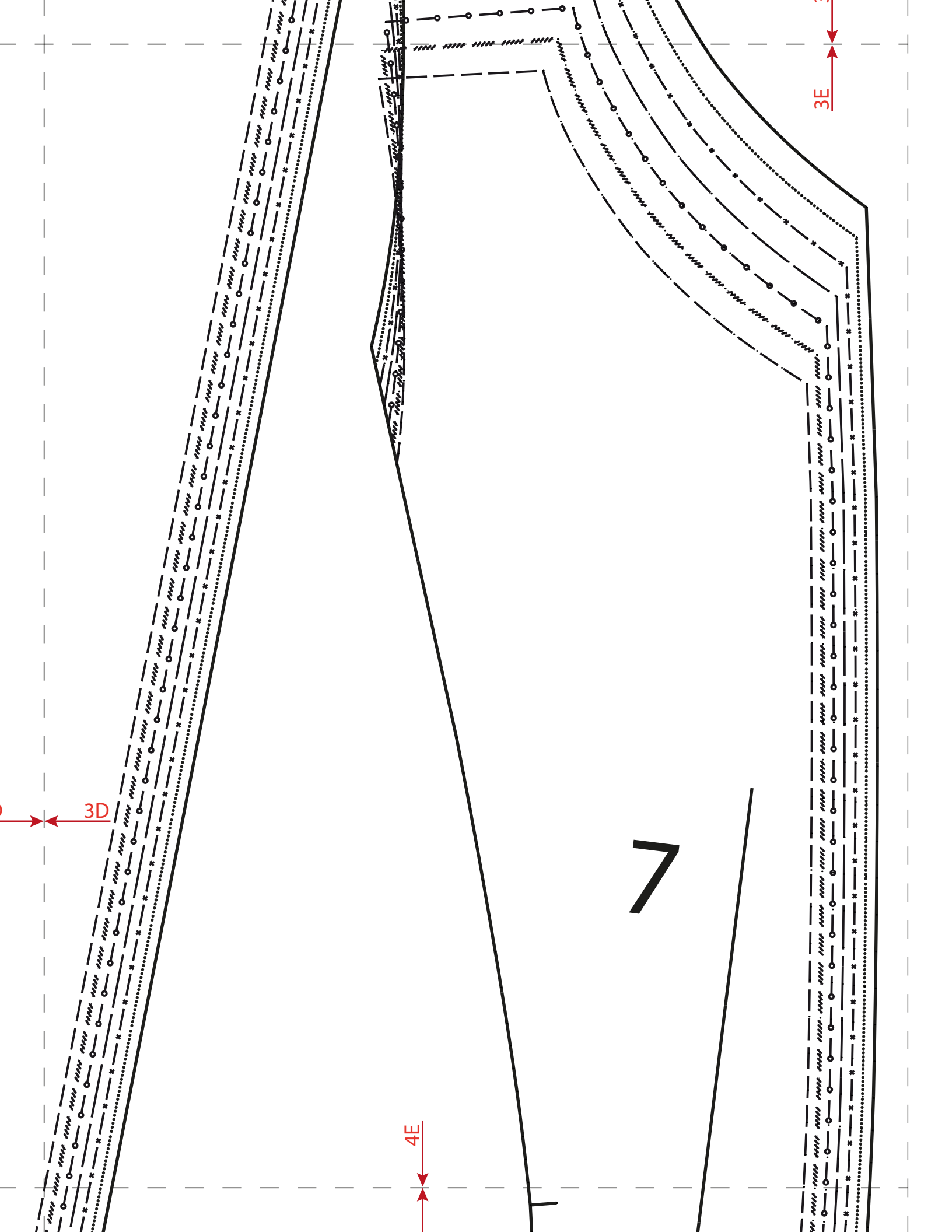
3C

3C

4C

3

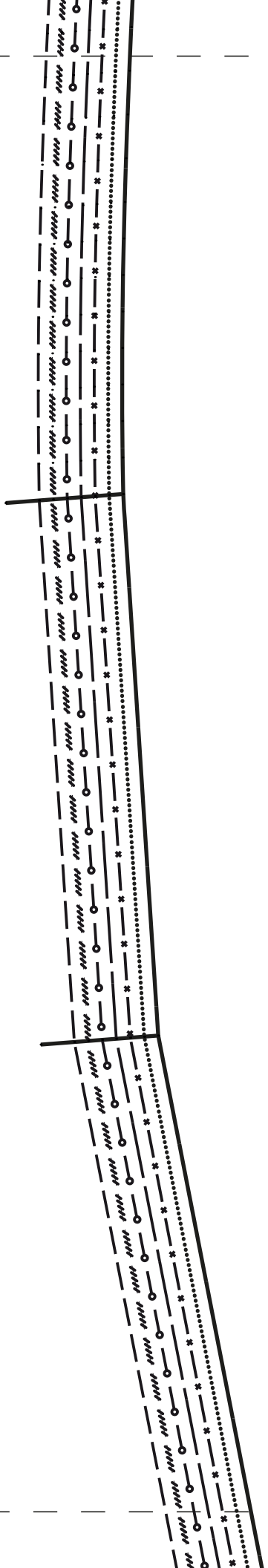




4A

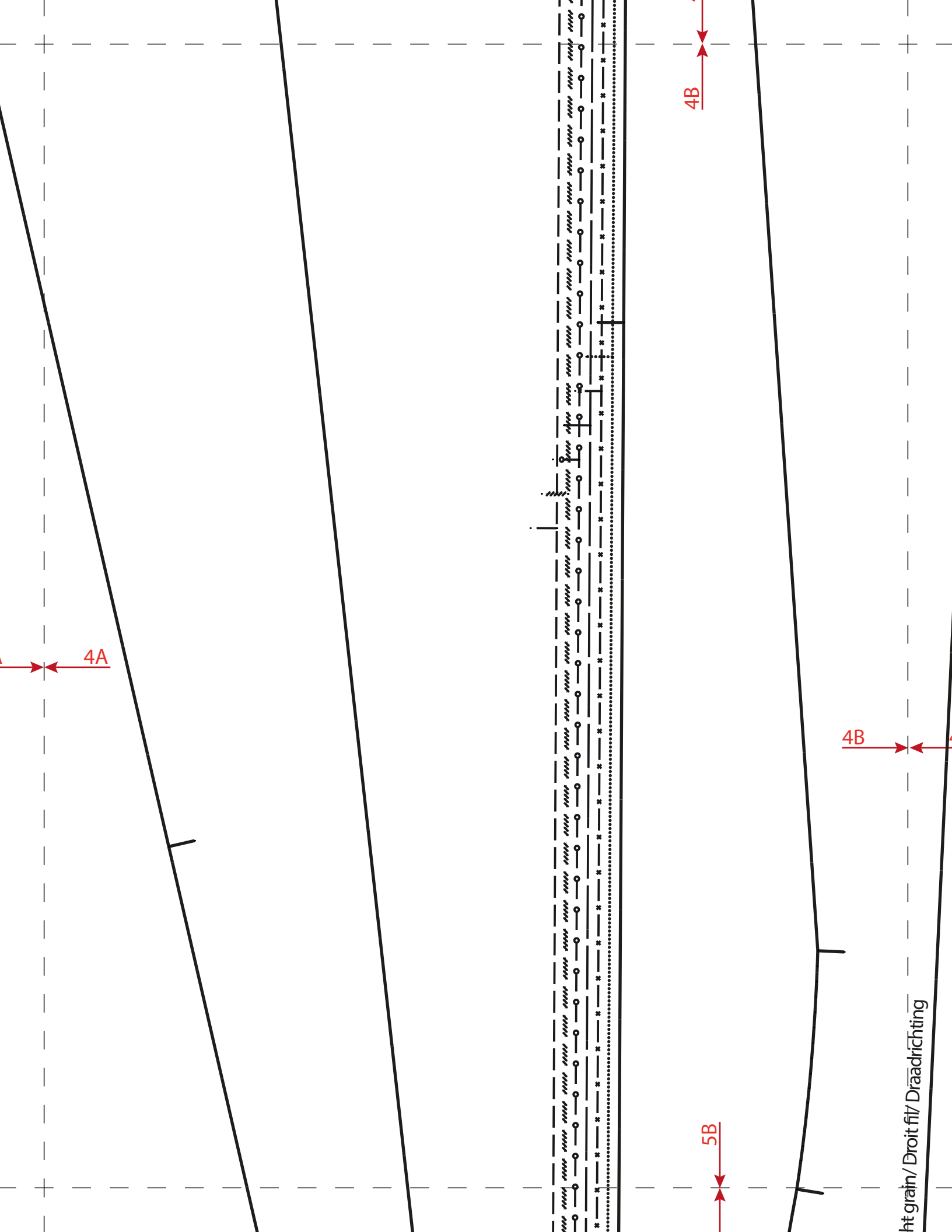
4A

5A



grain/ Droit fil/ Draadrichting

Centre back/ Milieu envers/



4B

4B

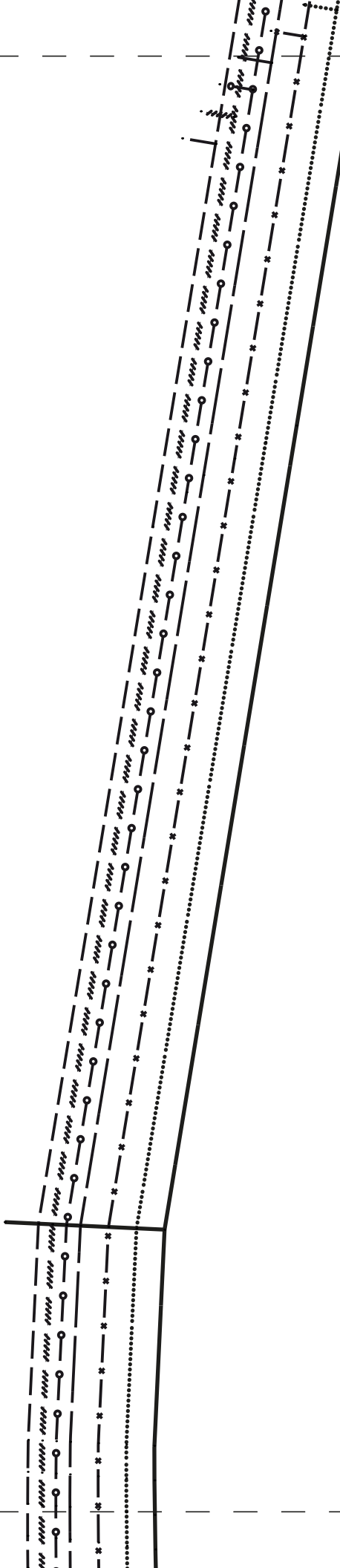
4A

5B

ht grain/ Droit fil/ Draadrichting

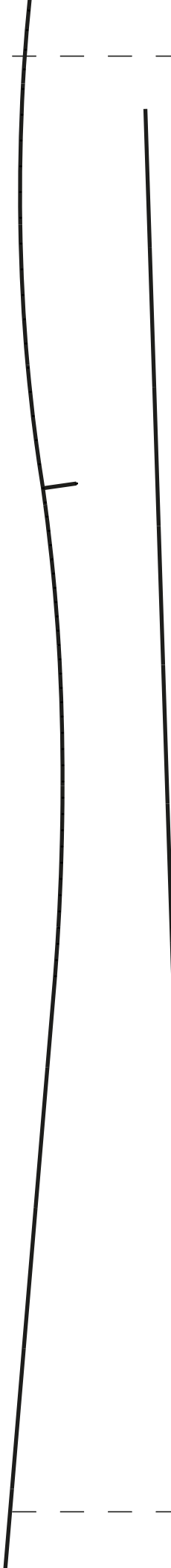
ht grain/ Droit fil/ Draadricting

4B



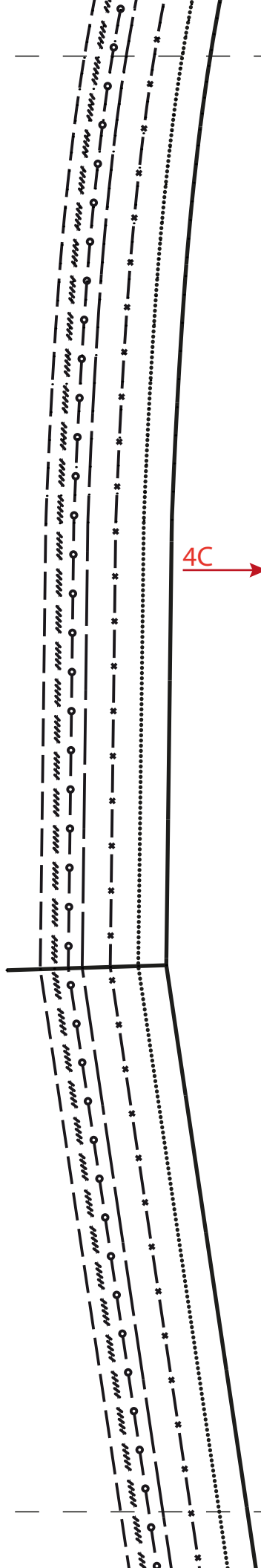
5C

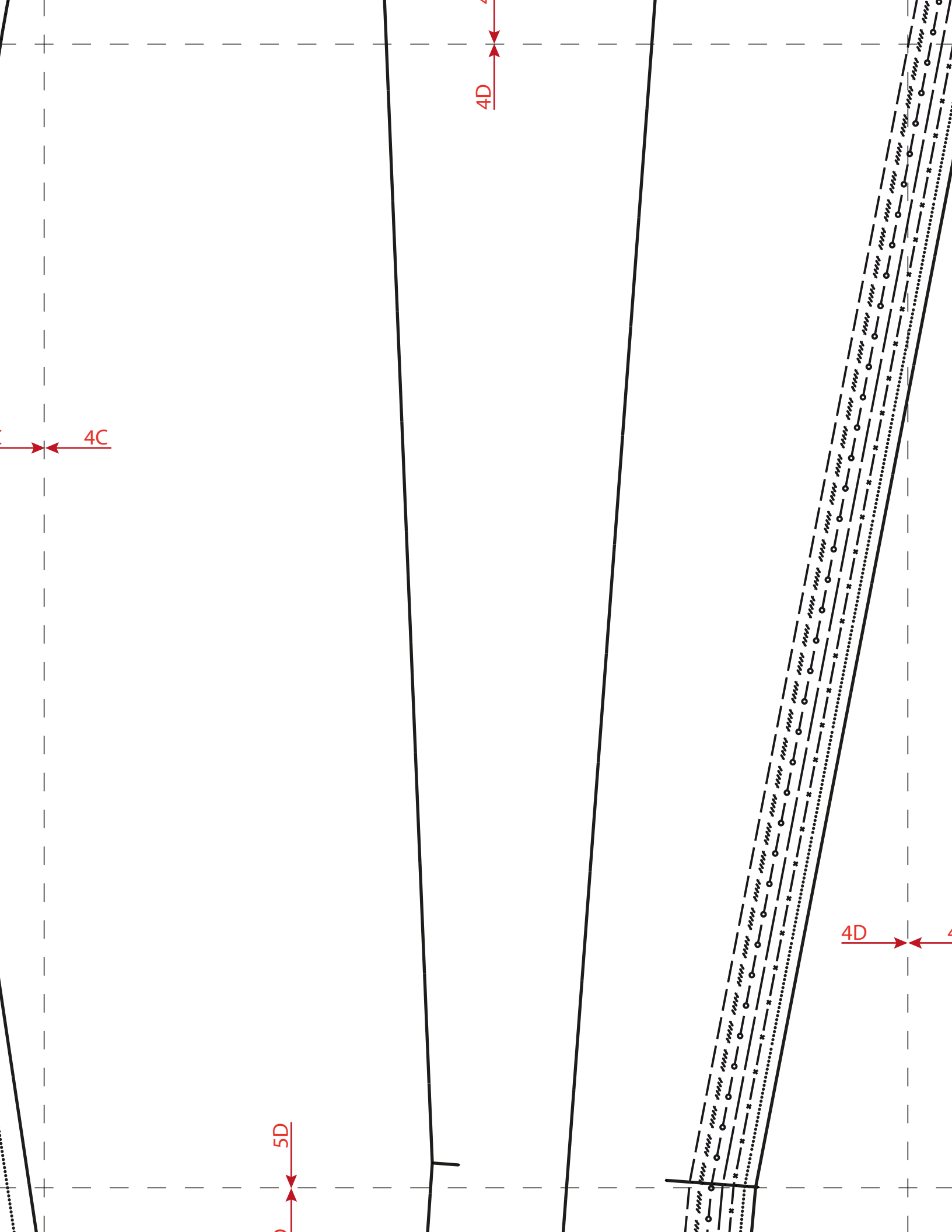
4C

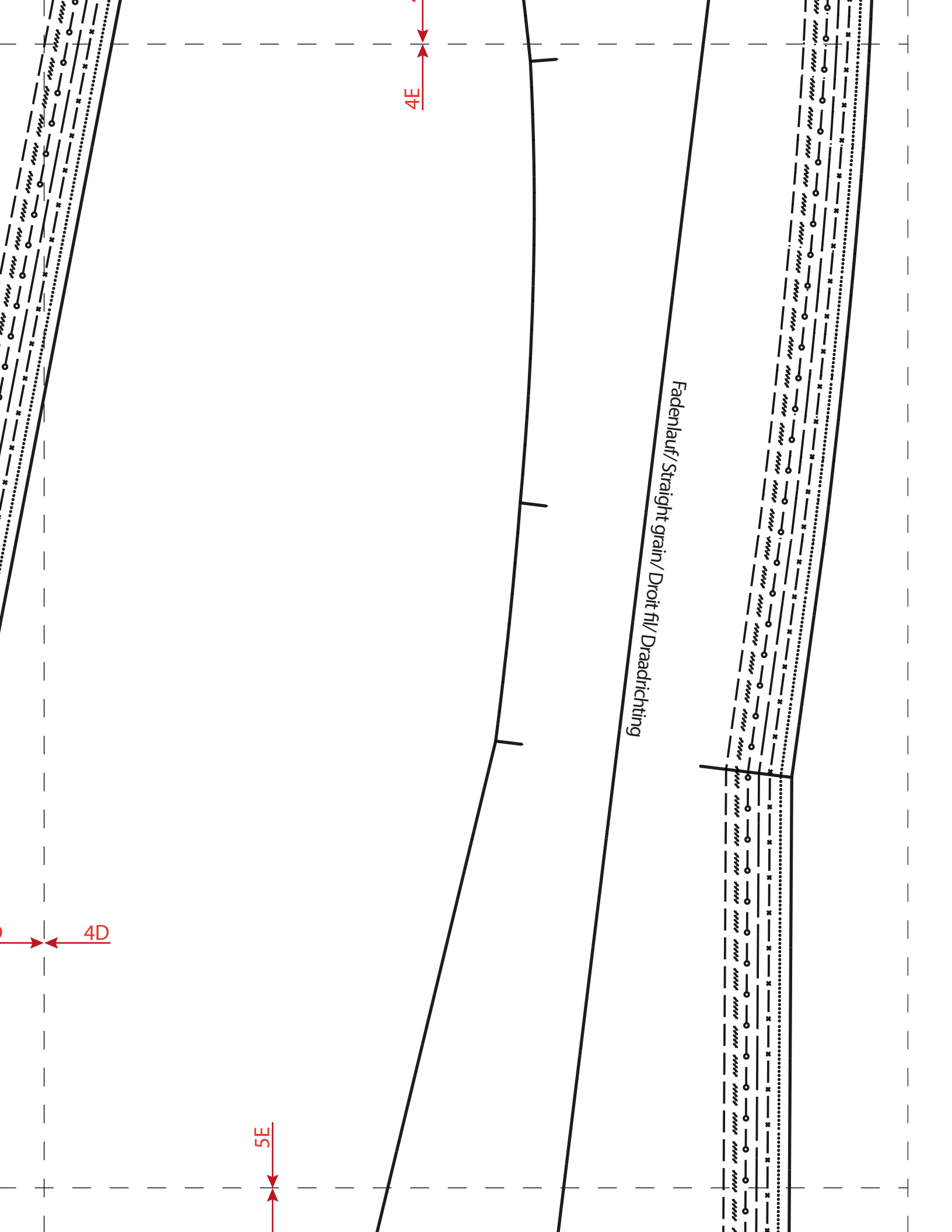


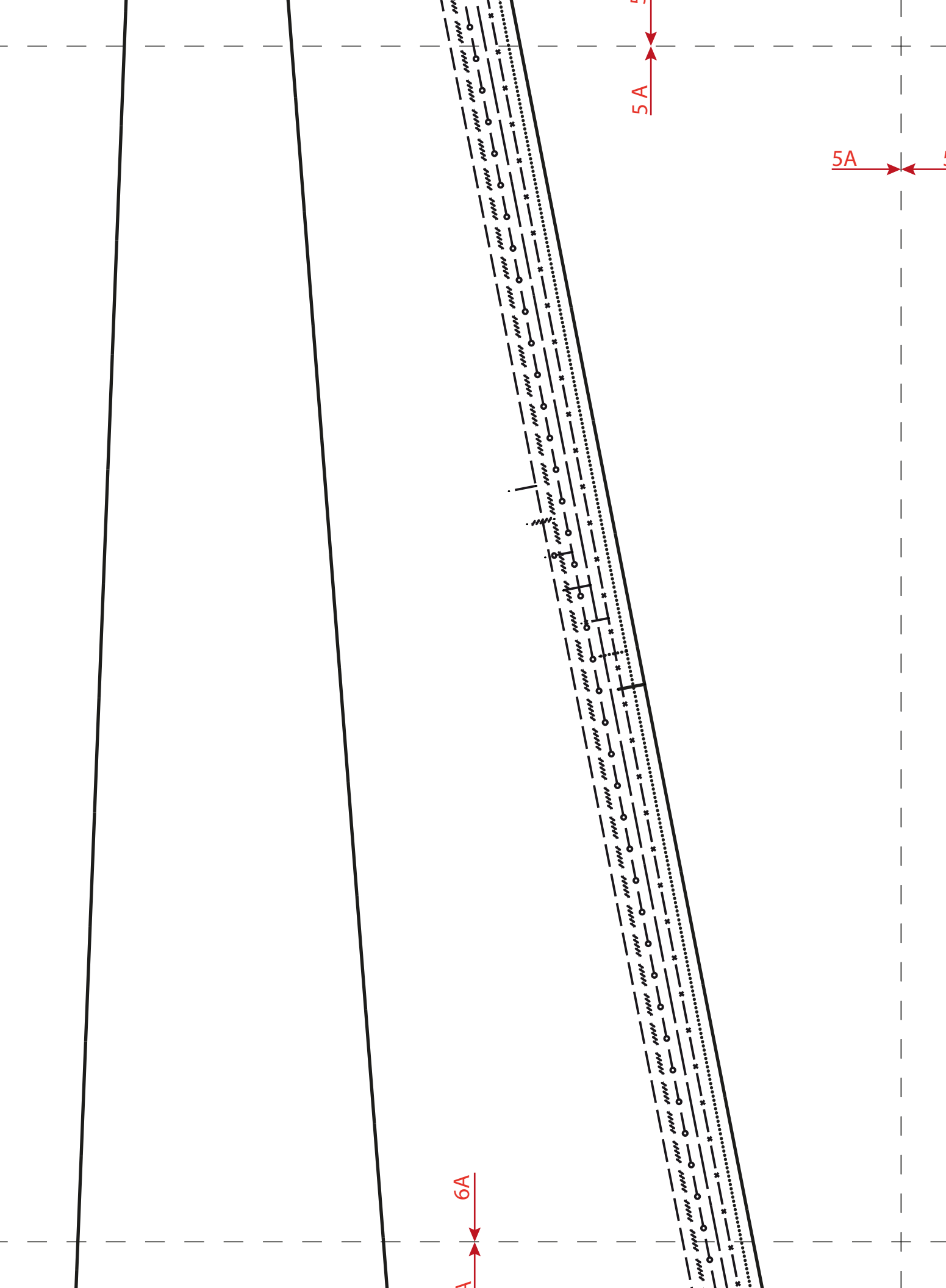
Fadenlauf/ St

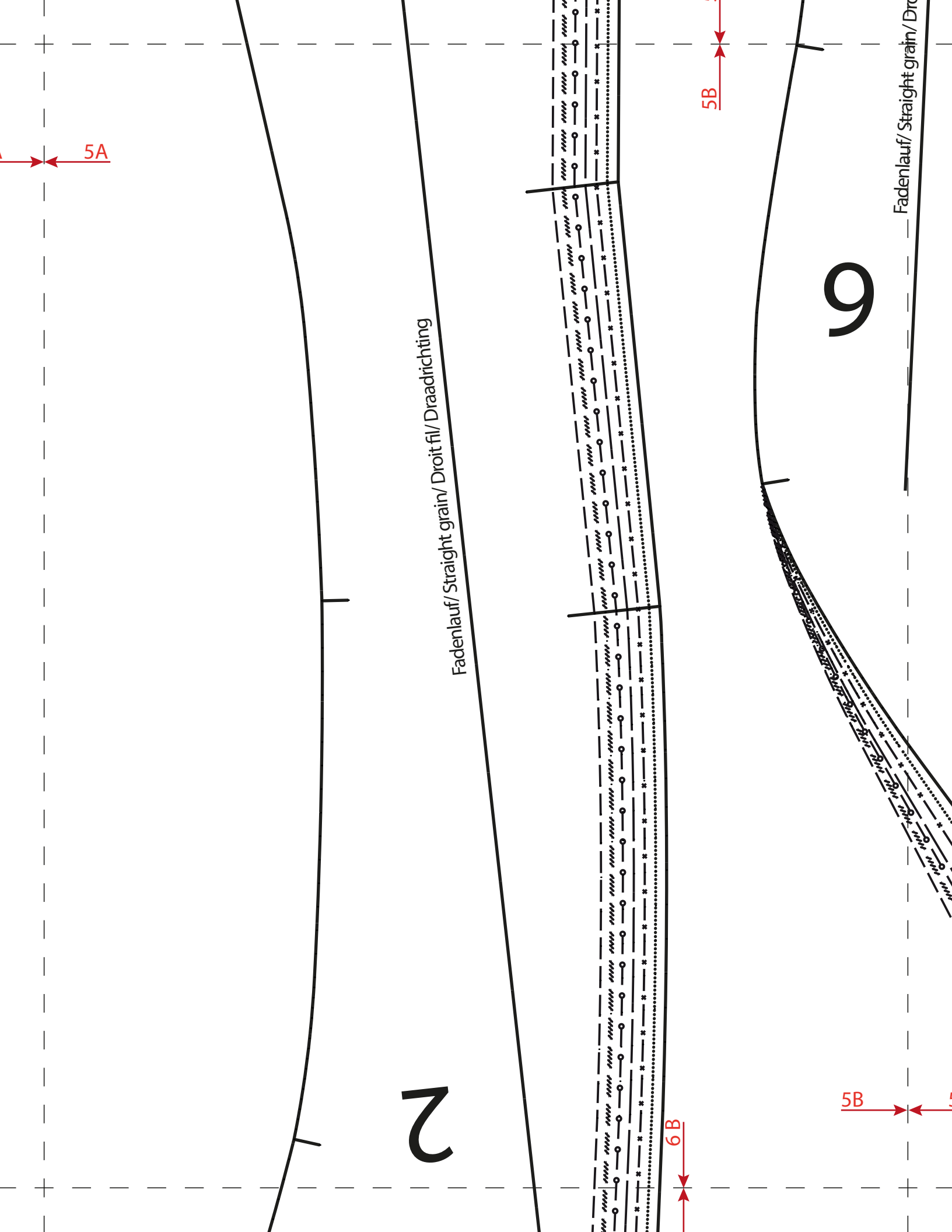
4C











5A

5B

2

6B

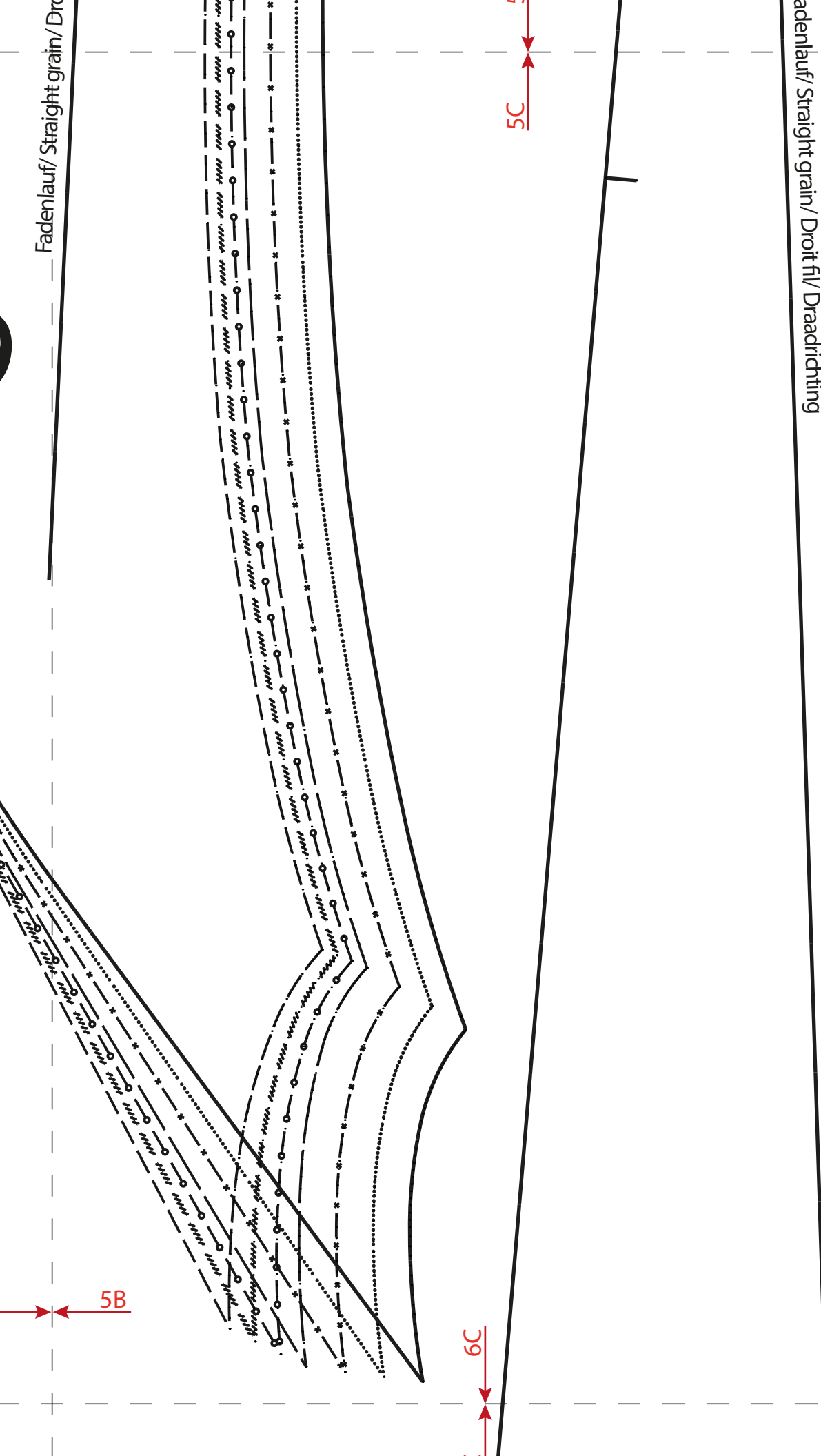
9

5B

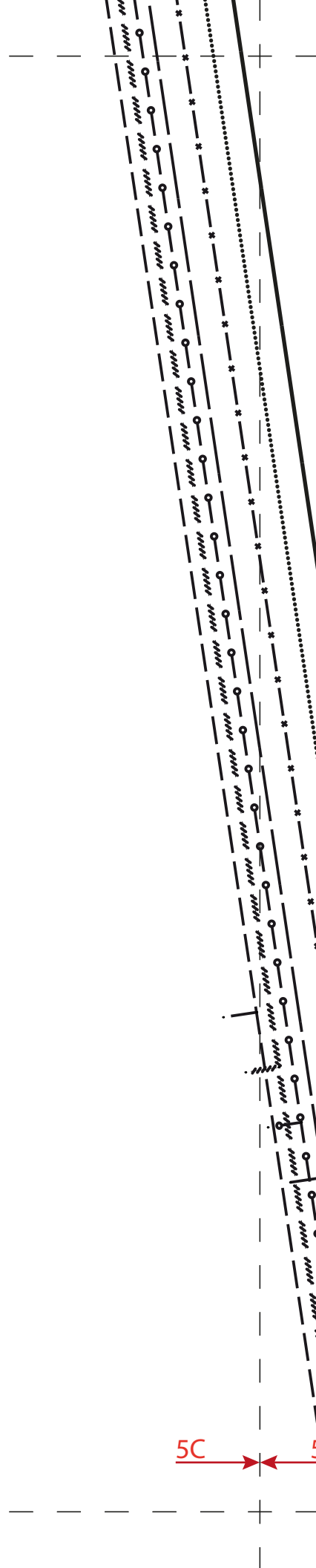
Fadenlauf/ Straight grain/ Droit fil/ Draadrichting

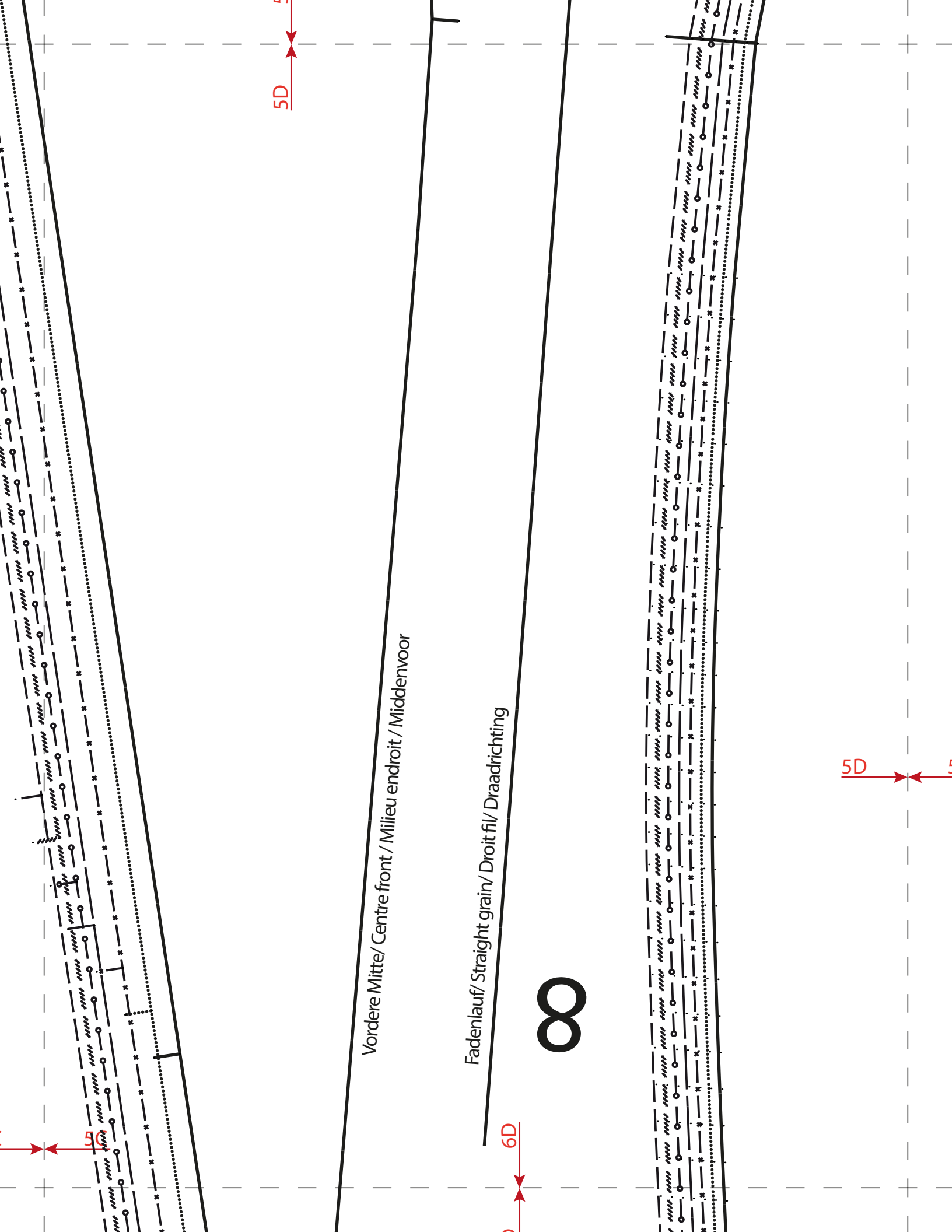
Fadenlauf/ Straight grain/ Droit fil/ Draadrichting

Fadenlauf/ Straight grain/ Droit



Fadenlauf/ Straight grain/ Droit fil/ Draadrichting





5D

Vordere Mitte/ Centre front / Milieu endroit / Middenvoor

Fadenlauf/ Straight grain/ Droit fil/ Draadrichting

∞

6D

5D

