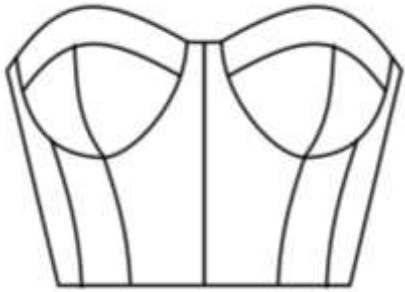


Corset/Bustier Style

Corset Academy Bustier Corset



This corset finishes in your natural waist.

For the purposes of making a Cupless/Underbust corset, leave out the cups.

S waist 64cm bust 88cm

M waist 68cm bust 92cm

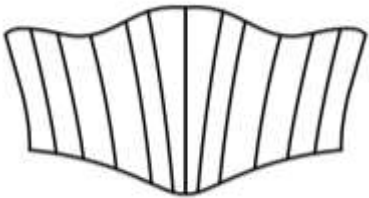
L waist 72cm bust 96cm

Waspie Style

If you don't want the corset to shape around, under your breasts or to use underwires, then these free patterns would work.

They tend to start just above and finish just below your natural waist.

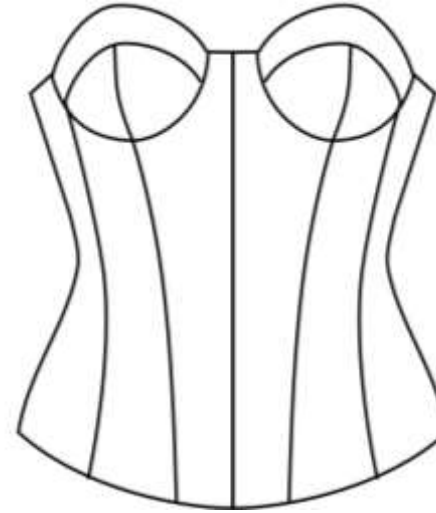
This is Katchi



Size XS (bust 82cm , waist 65cm, hip 94cm)

up to size XL (bust 98cm, waist 80cm, 106cm)

Parker corset



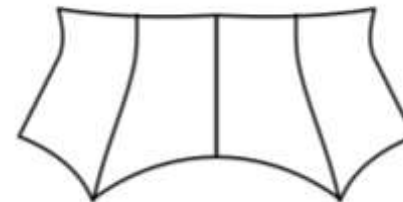
This is a longer length Corset. You can easily shorten it

For the purposes of making a Cupless/Underbust corset, leave out the cups.

Size 2 (bust 82.5cm , waist 63cm, hip 87.5cm)

up to size 30 (bust 117cm, waist 94cm, 122cm)

Transformations by Tracy



Size S-M Waist 65cm – 70cm

Size M-L Waist 71cm – 76cm