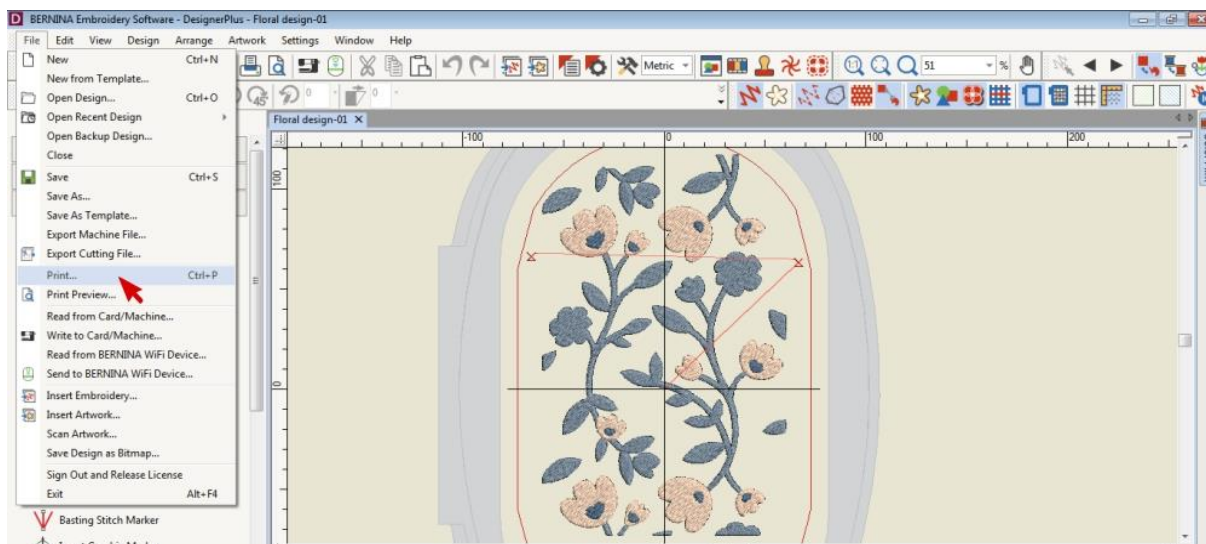
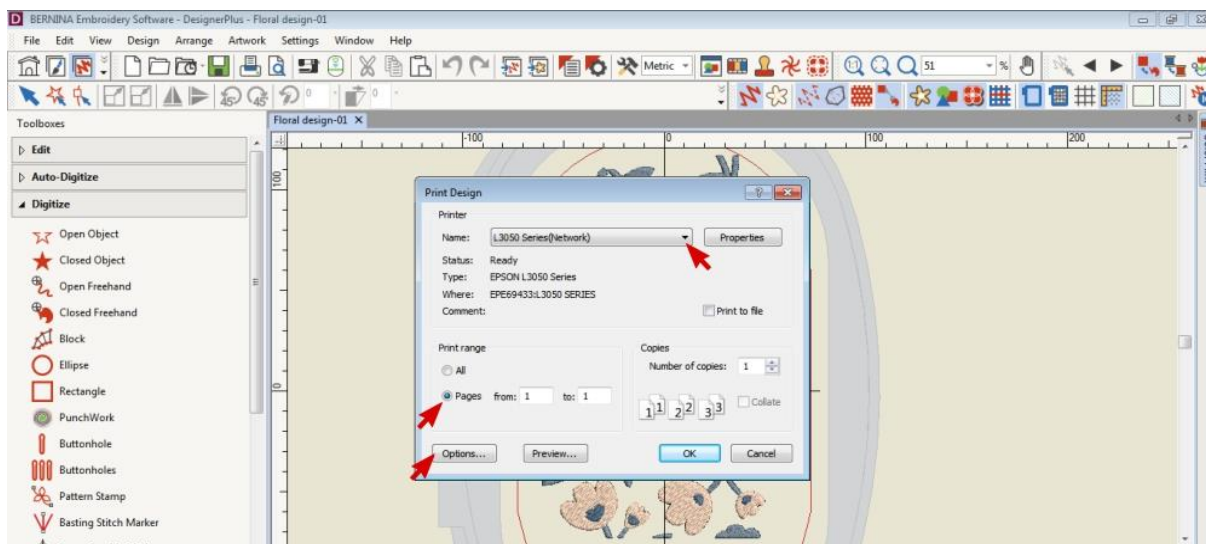


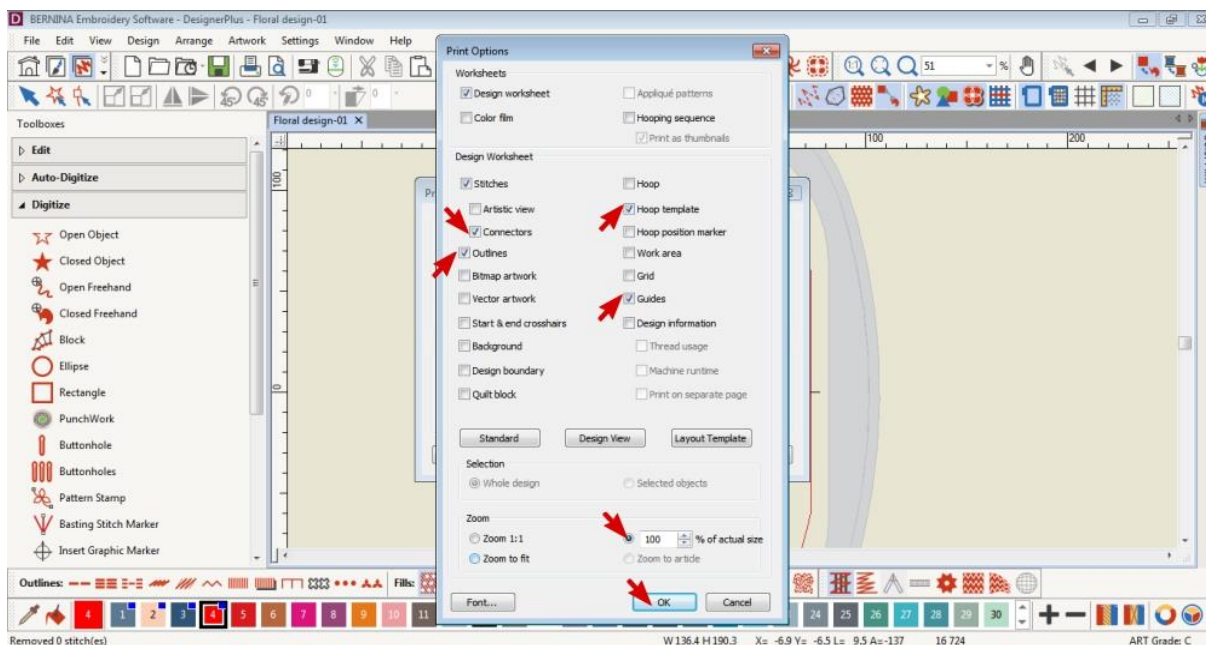
How to print templates of an embroidery design



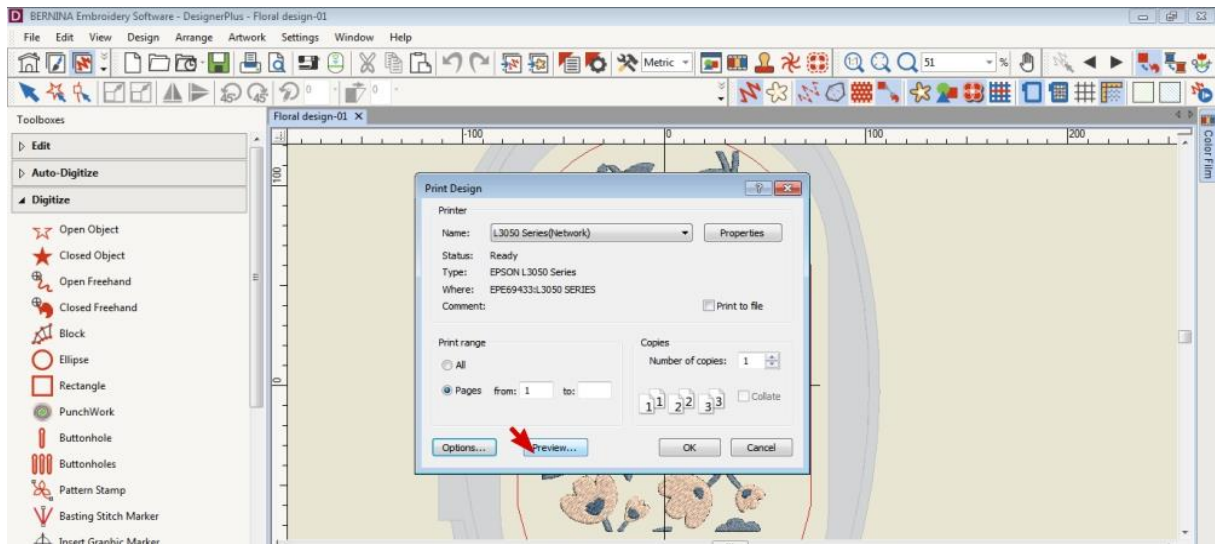
Open the embroidery design in the Bernina Embroidery Software DesignerPlus or ARTlink, go to File and click Print.



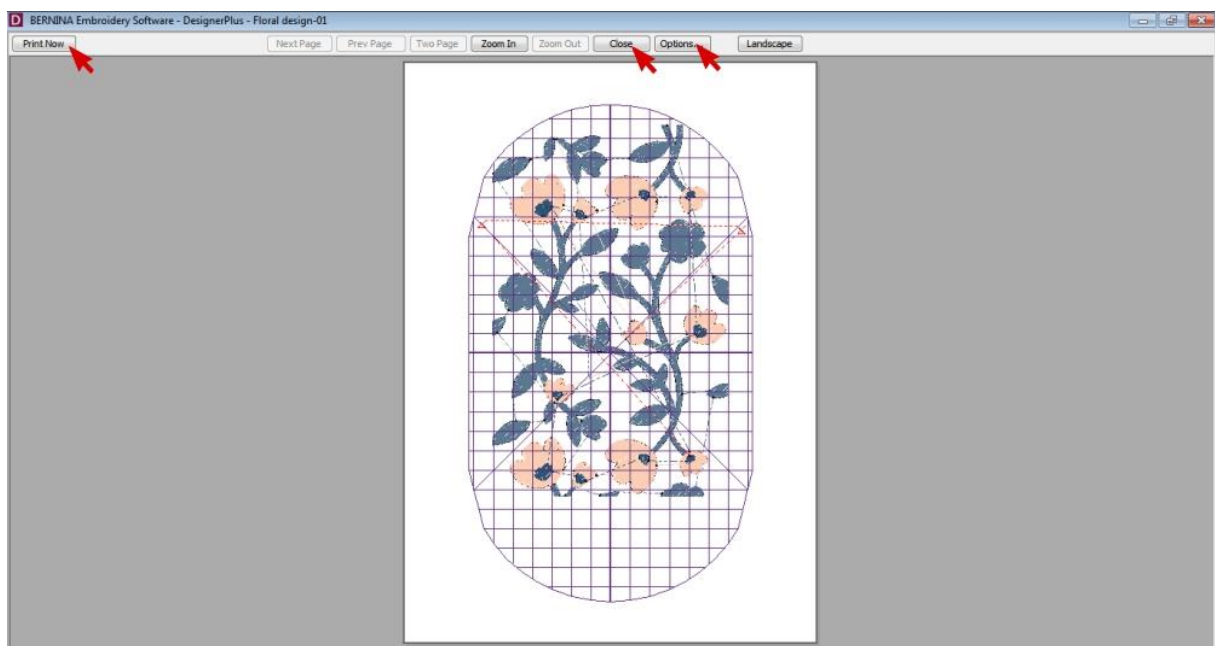
Select your printer from the drop down menu. Tick Pages and enter 1 in both boxes. Click on Options.



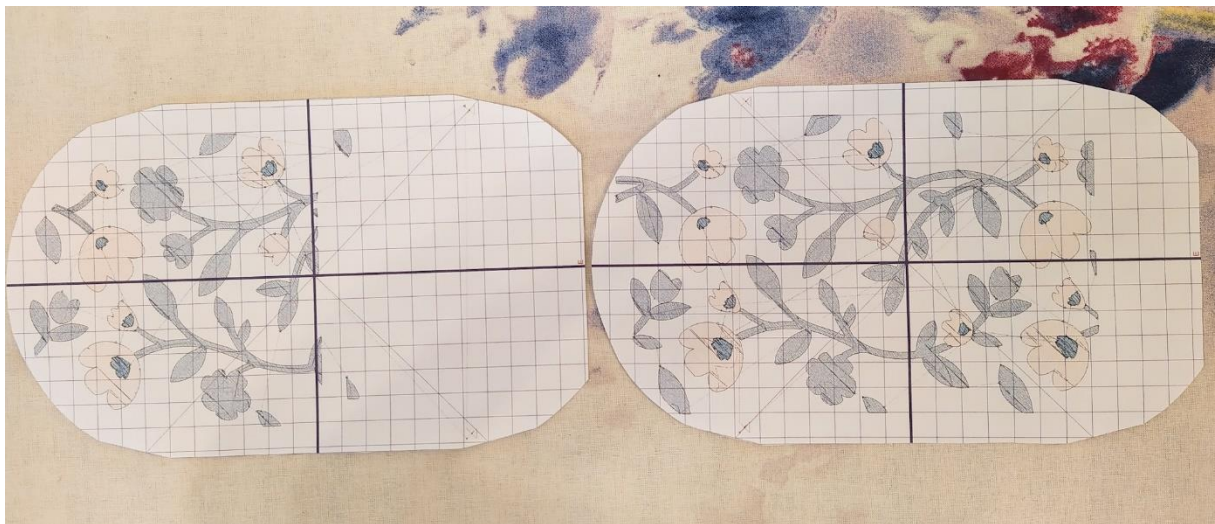
Tick the boxes of the information you want to include. These are the ones I would recommend. Click OK when done.



Click Preview.



If you are happy with the preview, click Print Now. Otherwise you can edit the information to include by selecting Options or Close to return to the design.



Once printed, cut out the templates.



These little x's are the reference markers.

When you overlap the templates and match them up, your embroidery design will match up perfectly.