

Diamonds



AMANDA *AM* MURPHY



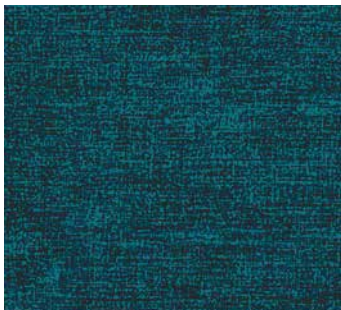
Harvest Color Story



Fabric A: 2277-78
Free-Motion Feathers Harvest
1-3/4 yards



Cotton Shot Coordinates



Fabric B: Peacock 9636-51
3-3/4 yards



Fabric C: Aqua 9636-24
1 yard



Fabric D: Spa 9636-57
1 yard



Fabric E: Copper 9636-88
5/8 yard



Fabric F: Orange 9636-22
1/2 yard



Fabric G: Green 9636-40
1/2 yard



Fabric H: Pumpkin 9636-39
1/2 yard



Fabric I: Apple 9636-42
1/2 yard

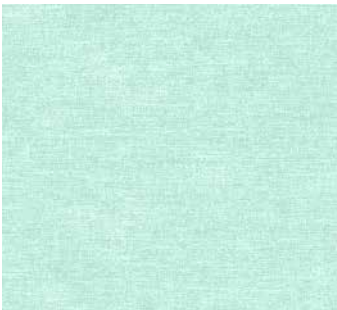
Mint Color Story



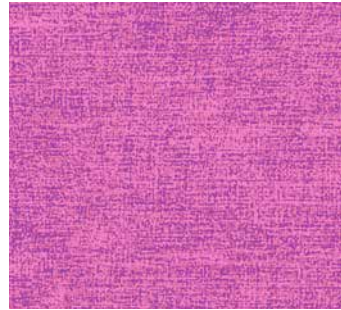
Fabric A: 2277-42
Free-Motion Feathers Mint
1-3/4 yards



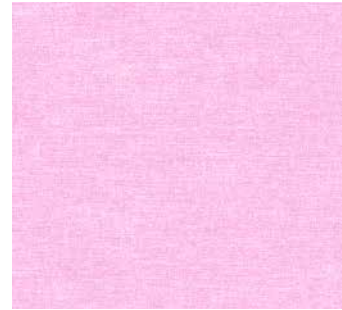
Cotton Shot Coordinates



Fabric B: Spa 9636-57
3-3/4 yards



Fabric C: Magenta 9636-15
1 yard



Fabric D: Peony 9636-21
1 yard



Fabric E: Meadow 9636-48
5/8 yard



Fabric F: Aqua 9636-24
1/2 yard



Fabric G: Green 9636-40
1/2 yard



Fabric H: Jade 9636-47
1/2 yard



Fabric I: Apple 9636-42
1/2 yard

Midnight Color Story



Fabric A: 2277-11
Free-Motion Feathers Midnight
1-3/4 yards



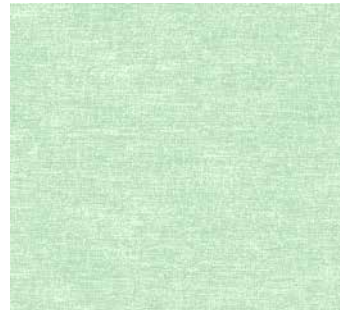
Cotton Shot Coordinates



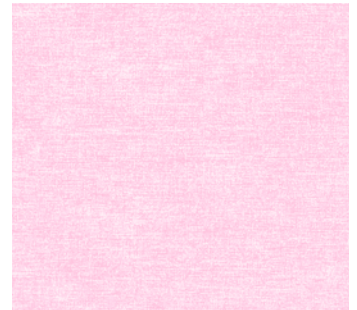
Fabric B: Indigo 9636-55
3-3/4 yards



Fabric C: Jade 9636-47
1 yard



Fabric D: Mint 9636-46
1 yard



Fabric E: Blush 9636-01
5/8 yard



Fabric F: Lagoon 9636-53
1/2 yard



Fabric G: Lilac 9636-36
1/2 yard



Fabric H: Amethyst 9636-60
1/2 yard



Fabric I:
Morning Mist 9636-59
1/2 yard

Sunshine Color Story



Fabric A: 2277-31
Free-Motion Feathers Sunshine
1-3/4 yards



Cotton Shot Coordinates



Fabric B: Cerise 9636-29
3-3/4 yards



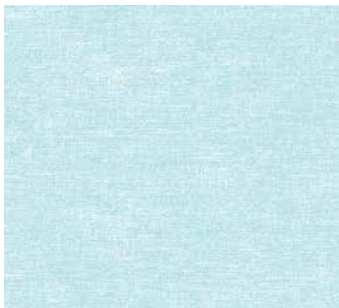
Fabric C: Azalea 9636-28
1 yard



Fabric D: Blush 9636-01
1 yard



Fabric E: Orange 9636-22
5/8 yard



Fabric F: Waterfall 9636-58
1/2 yard



Fabric G: Tangerine 9636-38
1/2 yard



Fabric H: Aqua 9636-24
1/2 yard



Fabric I: Sunshine 9636-33
1/2 yard

Diamonds Instructions

Diamonds is a 56-1/2" x 85-1/2" modern quilt designed by Amanda Murphy to celebrate the introduction of the amazing BERNINA Q16!. It showcases her Free-Motion Feathers fabric and Cotton Shot coordinates for Contempo of Benartex. In addition to the yardage for the version of your choice listed on the preceding pages you will need:

- Batting
- Quilting and piecing thread (I like Aurifil 50 wt.)
- 2 yards of Cotton Shot wideback (currently available in 9636W-14 Platinum and 9636W-12 Charcoal) OR 5-3/4 yards of any Cotton Shot 42" wide print

Cutting

Fabric A:

Turn the fabric LENGTHWISE, and cut 2 rectangles 7-1/2" x 56-1/2".

Keeping the fabric oriented in this direction, cut 1 strip 9-1/2" x the length of the fabric. Subcut into 3 squares 9-1/2" x 9-1/2" and 2 rectangles 9-1/2" x 5".

Note: We will use the leftover fabric in the bonus project that will be featured on weallsew.com after this project concludes, or you can piece it into the back of this quilt or use it for another project.

Fabric B:

Cut 13 strips 7-1/2" x WOF. Subcut into 64 squares 7-1/2" x 7-1/2". Set aside 32 of these squares for Rows 1 and 5 and 32 of these squares for Rows 2 and 4.

Cut 1 strip 5-1/2" x WOF. Subcut into 4 rectangles 5-1/2" x 9-1/2".

Cut 2 strips 5" x WOF. Subcut into 16 squares 5" x 5".

Cut 3 strips 3-1/2" x WOF. Piece into 2 rectangles 3-1/2" x 56-1/2".

Fabrics C and D:

From EACH of these fabrics, cut 2 strips 14-1/2" x WOF. Subcut into 8 rectangles 14-1/2" x 7-1/2".

Fabric E:

Cut 8 strips 2-1/4" x WOF. Set aside for the binding.

Fabrics F, G, H, and I:

From EACH of these fabrics, cut 1 strip 14-1/2" x WOF. Subcut into 2 squares 14-1/2" x 14-1/2".

Piecing

"WOF" refers to width of fabric. All seams are 1/4". Press all seams open, unless otherwise noted.

NOTE THAT ALL OF THE TEAL BACKGROUND FABRIC IS SHOWN AS CREAM IN THE FOLLOWING DIAGRAMS FOR EASE IN PRINTING.

Note: Save all of the fabric triangles that you trim away with the "stitch-and-flip" technique used in this project. They will be made into half-square triangles and used in the bonus project that will be featured on weallsew.com after this project concludes, or you can put them into the back of this quilt instead!

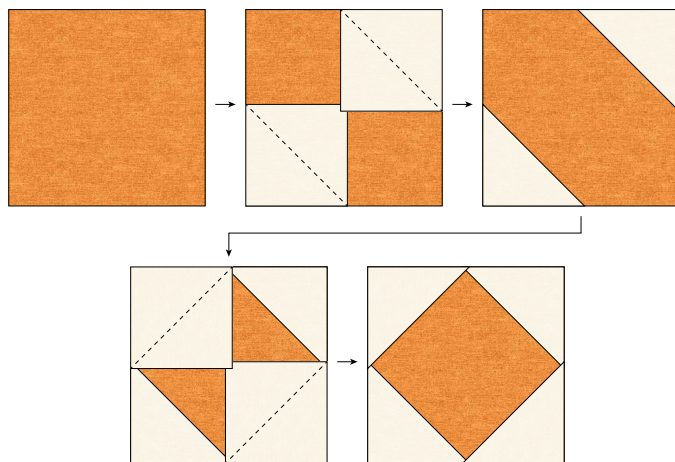
Preparation

Draw a diagonal line on the WRONG side of ALL of the Fabric B squares.

Rows 1 and 5: Large Diamonds

Place a Fabric B square 7-1/2" x 7-1/2" on opposite corners of each Fabric F, G, H, and I square 14-1/2" x 14-1/2", right sides together and orienting the diagonals as shown. Sew right along the drawn lines, a hairline more toward the outer corners to allow for fabric thickness. Trim the seam to 1/4" and press open.

Place Fabric B squares 7-1/2" x 7-1/2" on the remaining corners of these units, right sides together and orienting the diagonals as shown. Sew right along the drawn lines, a hairline more toward the outer corners to allow for fabric thickness. Trim seam to 1/4" and press open.



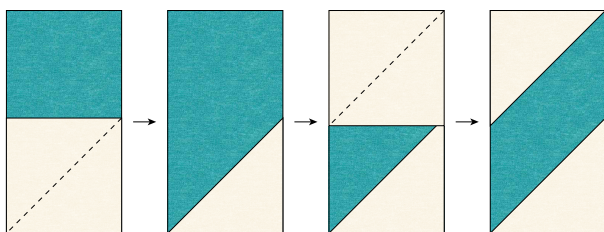
Make a total of 8 (2 of each color)

Following the Quilt Assembly Diagram arrange four blocks to form Row 1 and four blocks to form Row 5. Join the blocks into rows, pressing the seams open.

Rows 2 and 4: Zigzags

Place a Fabric B square $7\text{-}1/2'' \times 7\text{-}1/2''$ on the bottom of each Fabric C rectangle $14\text{-}1/2'' \times 7\text{-}1/2''$, right sides together and orienting the diagonal as shown. Sew right along the drawn lines, a hairline more toward the outer corners to allow for fabric thickness. Trim the seams to $1/4''$ and press TOWARD THE RECTANGLES.

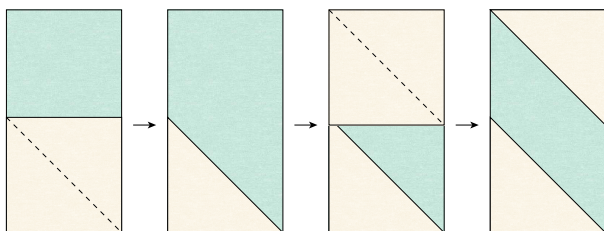
Attach another Fabric B square $7\text{-}1/2'' \times 7\text{-}1/2''$ to the top of these units in the same manner, following the diagram below. Trim the seams to $1/4''$ and press TOWARD THE RECTANGLES.



Make 8

Place a Fabric B square $7\text{-}1/2'' \times 7\text{-}1/2''$ on the bottom of each Fabric D rectangle $14\text{-}1/2'' \times 7\text{-}1/2''$, right sides together and orienting the diagonal as shown. Sew right along the drawn lines, a hairline more toward the outer corners to allow for fabric thickness. Trim the seams to $1/4''$ and press TOWARD THE SQUARES.

Attach another Fabric B square $7\text{-}1/2'' \times 7\text{-}1/2''$ to the top of these units in the same manner, following the diagram below. Trim the seams to $1/4''$ and press TOWARD THE SQUARES.



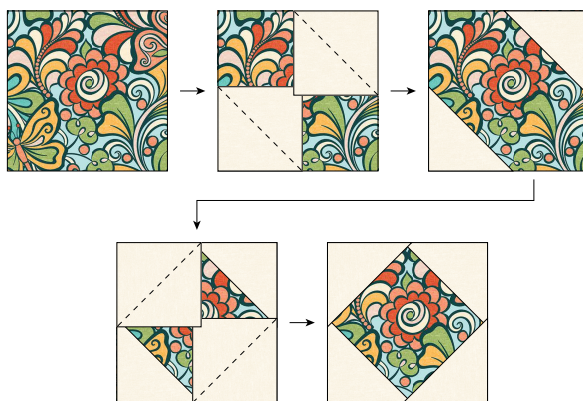
Make 8

Following the Quilt Assembly Diagram arrange four of each of these blocks to form Row 2 and four of each of these blocks to form Row 4. Join the blocks into rows, pressing the seams open.

Rows 3: Small Diamonds

Place a Fabric B square $5'' \times 5''$ on opposite corners of each Fabric A square $9\text{-}1/2'' \times 9\text{-}1/2''$, right sides together and orienting the diagonals as shown. Sew right along the drawn lines, a hairline more toward the outer corners to allow for fabric thickness. Trim the seams to $1/4''$ and press open.

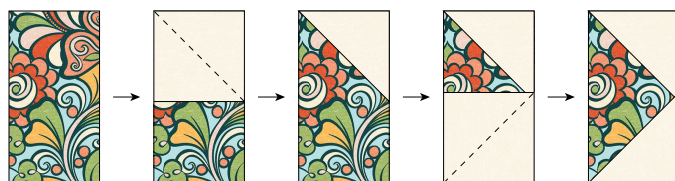
Place Fabric B squares $5'' \times 5''$ on the remaining corners of these units, right sides together and orienting the diagonals as shown. Sew right along the drawn lines, a hairline more toward the outer corners to allow for fabric thickness. Trim seams to $1/4''$ and press open.



Make 3

To make the partial diamonds on the sides of the quilt, place a Fabric B square $5'' \times 5''$ on the top of each Fabric A rectangle $5'' \times 9\text{-}1/2''$, right sides together and orienting the diagonal as shown. Sew right along the drawn lines, a hairline more toward the outer corners to allow for fabric thickness. Trim the seams to $1/4''$ and press open.

Attach another Fabric B square $7\text{-}1/2'' \times 7\text{-}1/2''$ to the bottom of these units in the same manner, following the diagram below.



Make 2

Following the Quilt Assembly Diagram on the following page, arrange these units with the Fabric A rectangles $5\text{-}1/2'' \times 9\text{-}1/2''$ to form Row 3. Join the blocks into a row, pressing the seams open.

Assembly

Join rows 1, 2, 3, 4, and 5 to form the quilt top center.

Join a Fabric B rectangle 3-1/2" x 56-1/2" to the top and bottom of the quilt.

Join a fabric A rectangle 7-1/2" x 56-1/2" to the top and bottom of the quilt.

Finishing

If using 42" wide backing fabric into two lengths. Cut 1 piece lengthwise to make 2 narrow panels. Join 1 narrow panel to each side of the wide panel.

If using wideback there is no need to piece, but I would definitely recommend pre-washing as wideback tends to shrink more than regular quilting cotton.

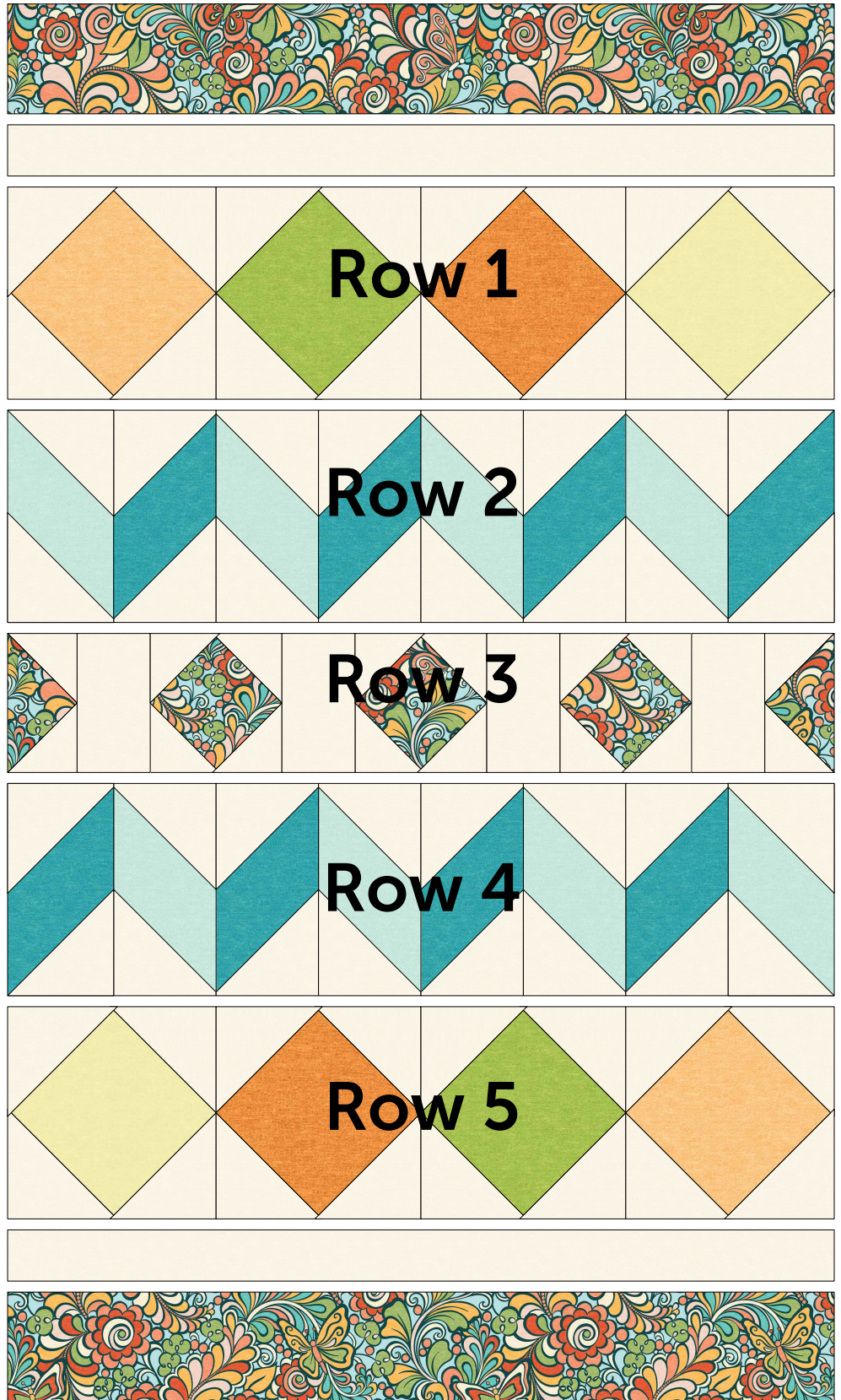
Layer backing, batting, and quilt top.

Consult [BERNINA's blog weallsew.com](http://www.bernina.com) for quilting tutorials for this piece in the fall of 2020!!! We'll walk you through the process step-by-step!

So that you can be prepared, all rulerwork was done using a straight line ruler and a 4", 6", and 8" circle curve. I used my **Every Angle Ruler**, as well as some rulers from my **Every Circle** and **Every Curve** set from Brewer Sewing to accomplish this, but you can use similar rulers to achieve the same effects, as long as you have the same size curves.

Join the 2-1/4" wide binding strips into 1 continuous piece for binding. Press, folding in half lengthwise. Join the binding to quilt on the front, hand stitching to the back to secure.

Enjoy!



Diamonds Assembly Diagram