

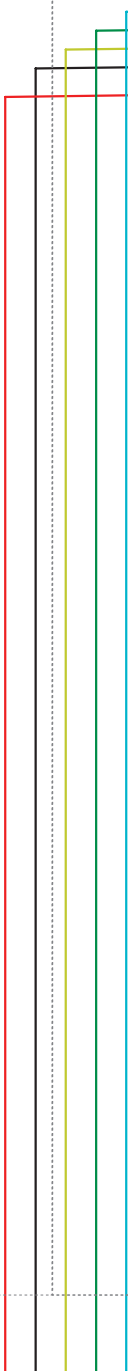
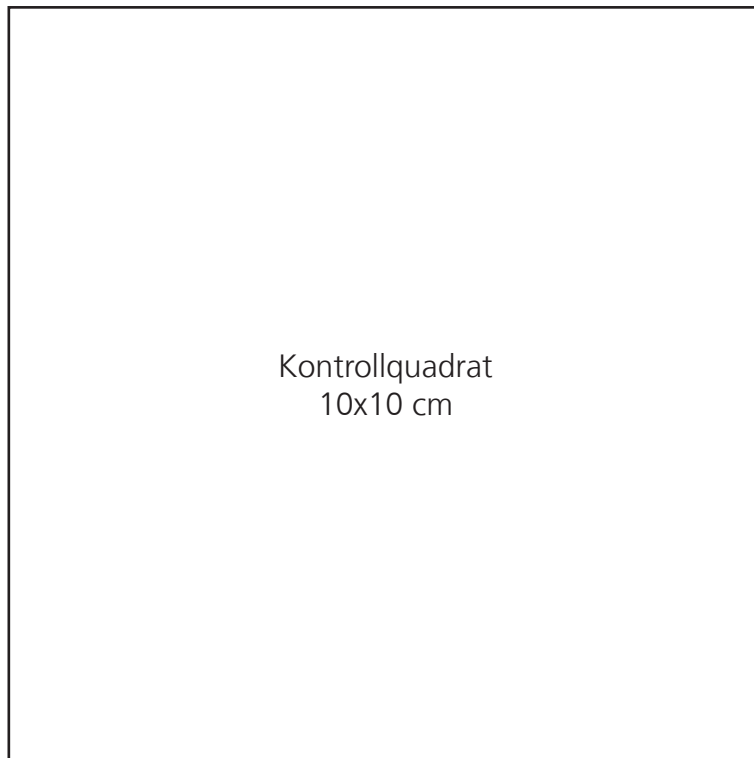
1 Schnittmuster ohne Größenanpassung, d.h. in tatsächlicher Grösse, ausdrucken.

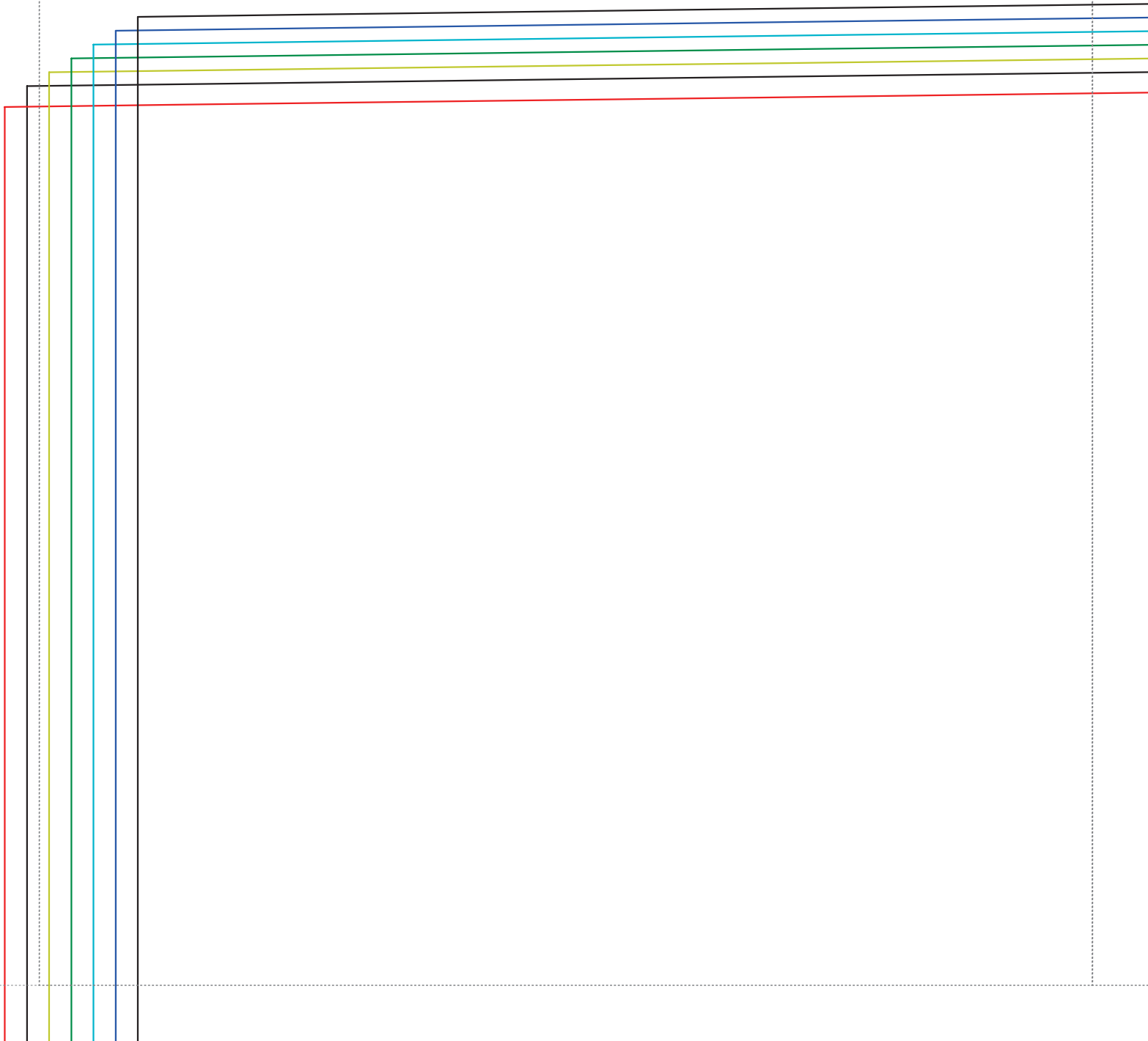
Grösse anhand des Kontrollquadrates auf Seite 1 kontrollieren.

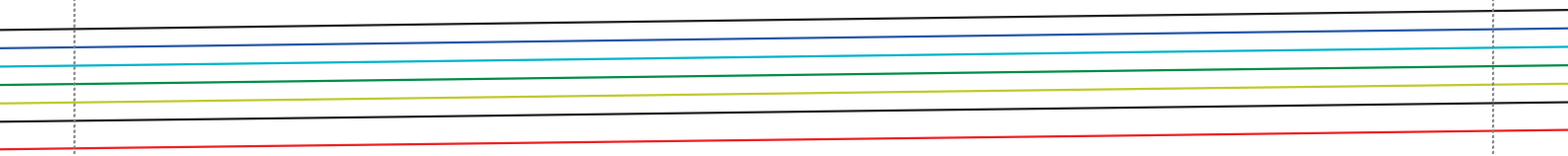
Entlang der gestrichelten Linien zusammenkleben gemäss Legeplan auf Seite 14.

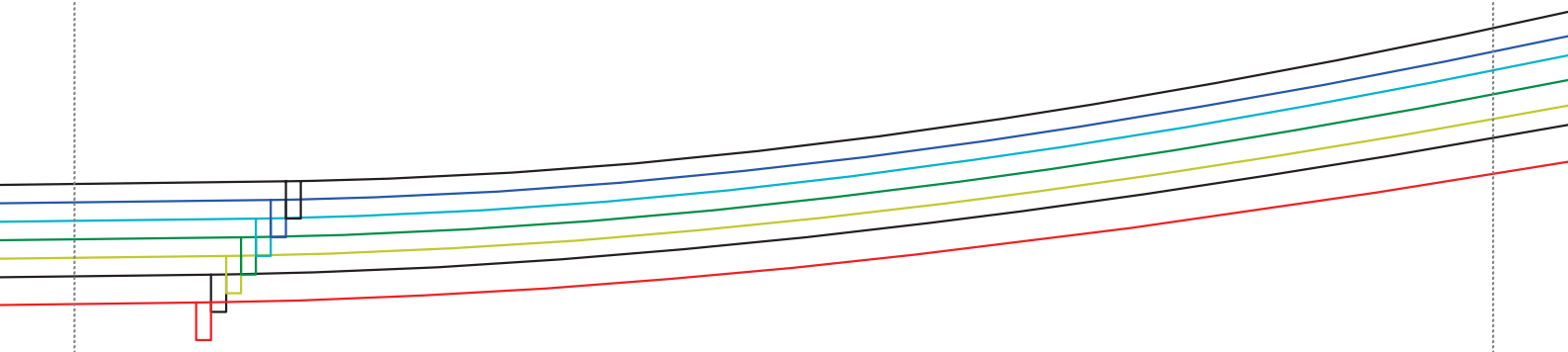
Dieses Schnittmuster stammt aus dem Buch „Hosen nähen – schön, leicht, schnell. Alle Modelle von Größe 34-46“

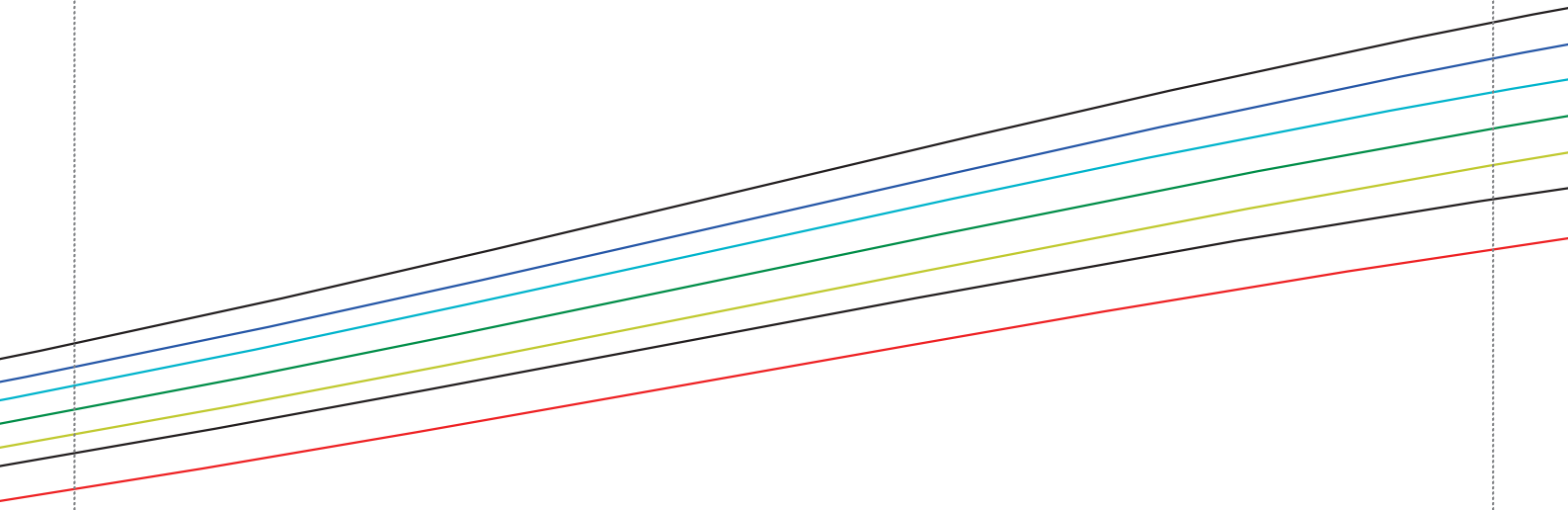
© frechverlag/Franziska Fulvio



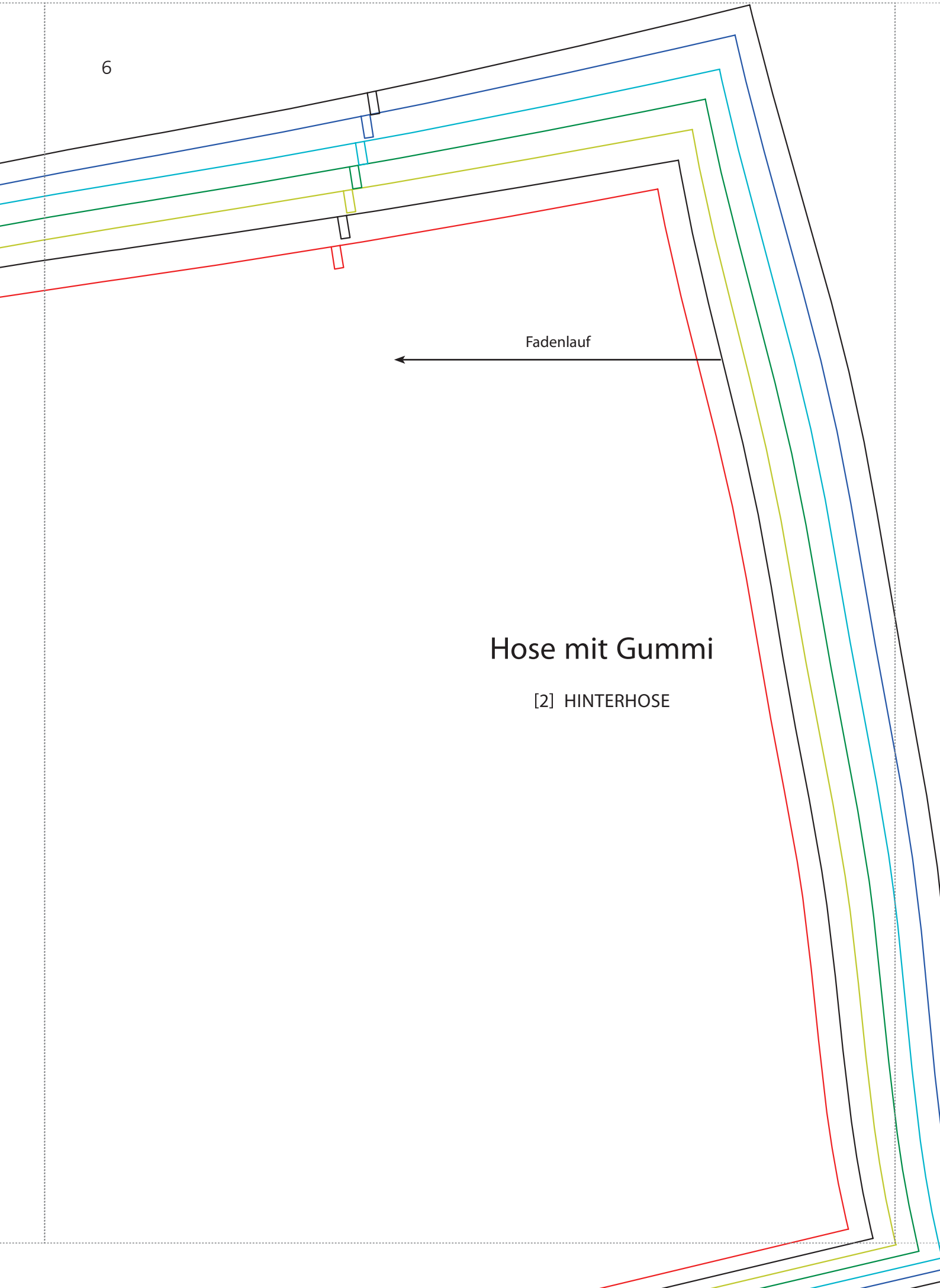








6



Fadenlauf

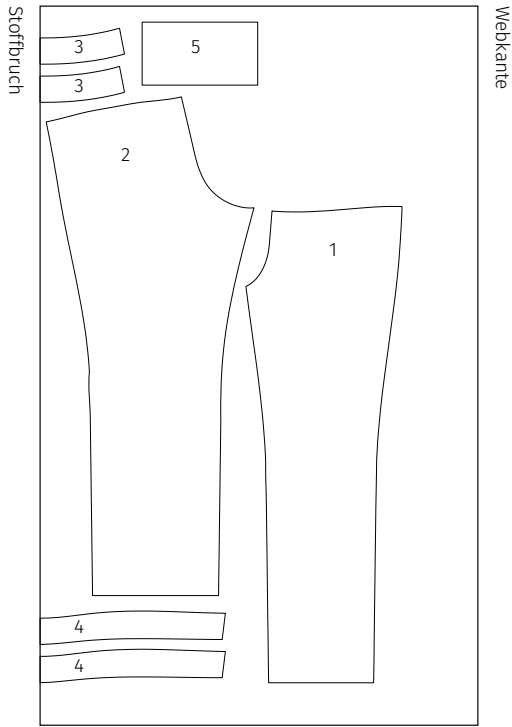
# Hose mit Gummi

[2] HINTERHOSE

7

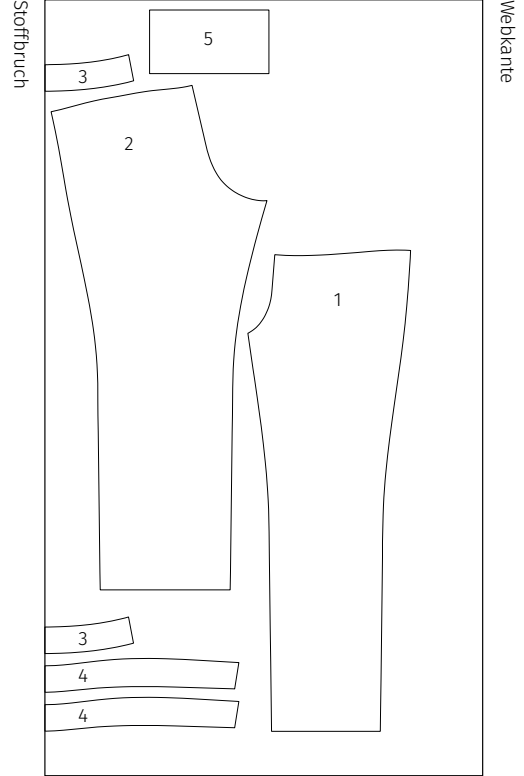
**Größe 34-40**

70 cm



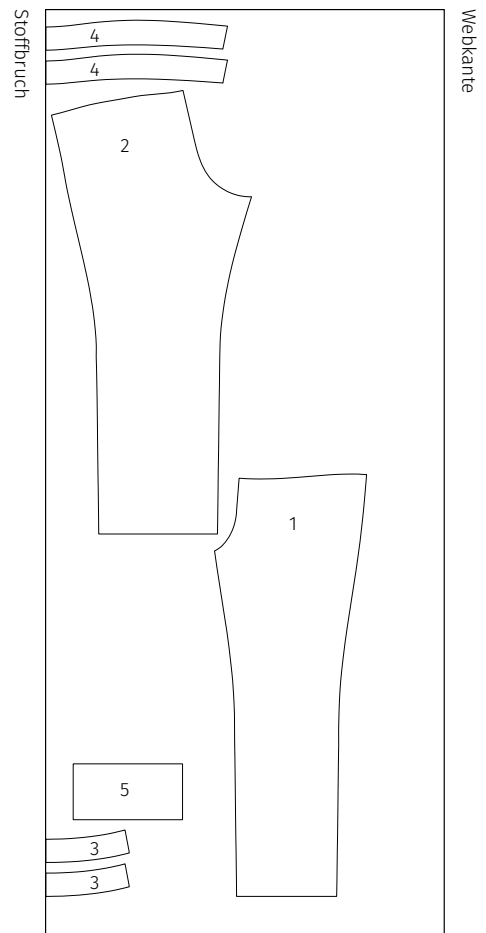
**Größe 42**

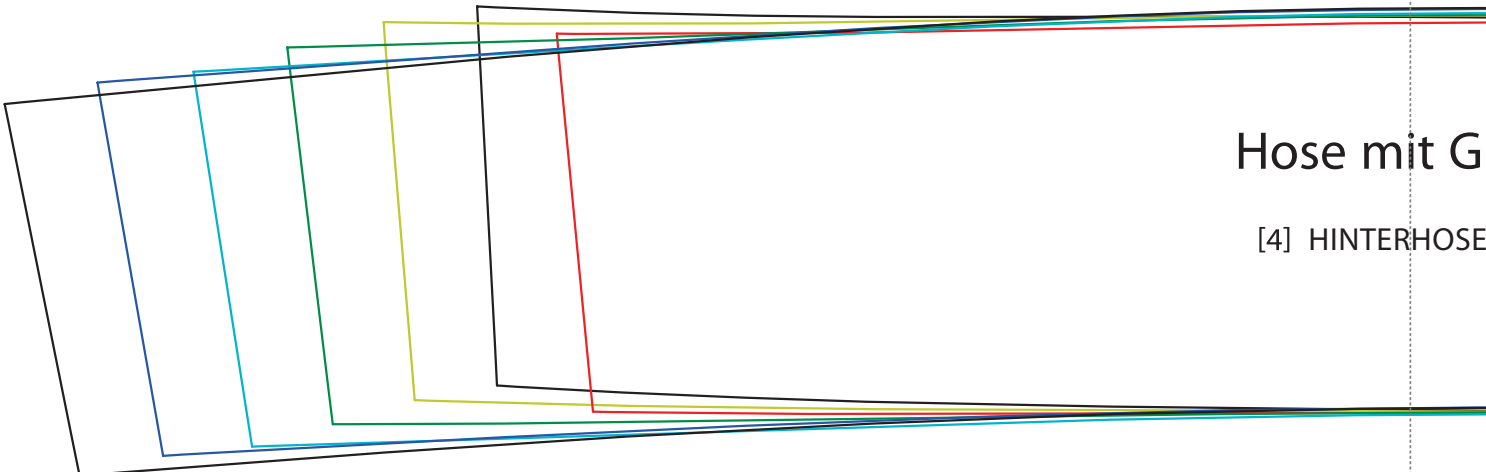
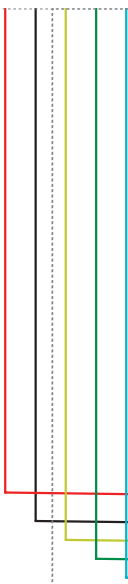
70 cm



**Größe 44-46**

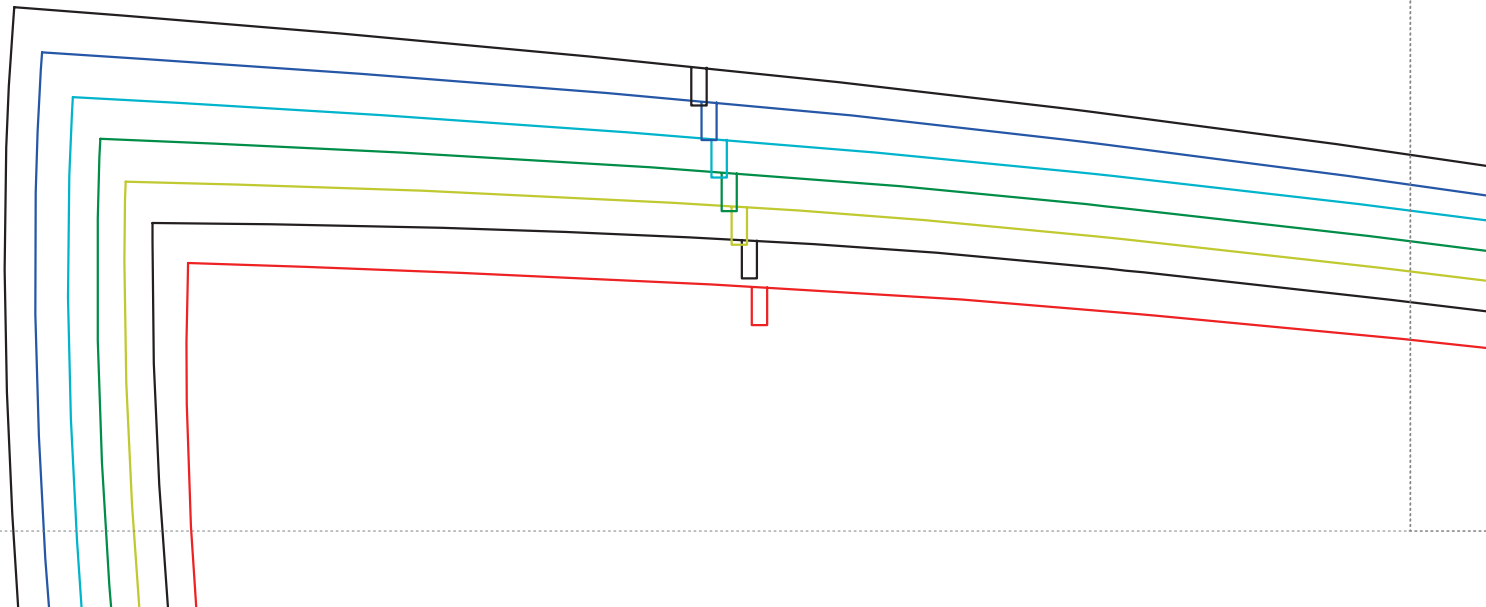
70 cm





Hose mit G

[4] HINTERHOSE

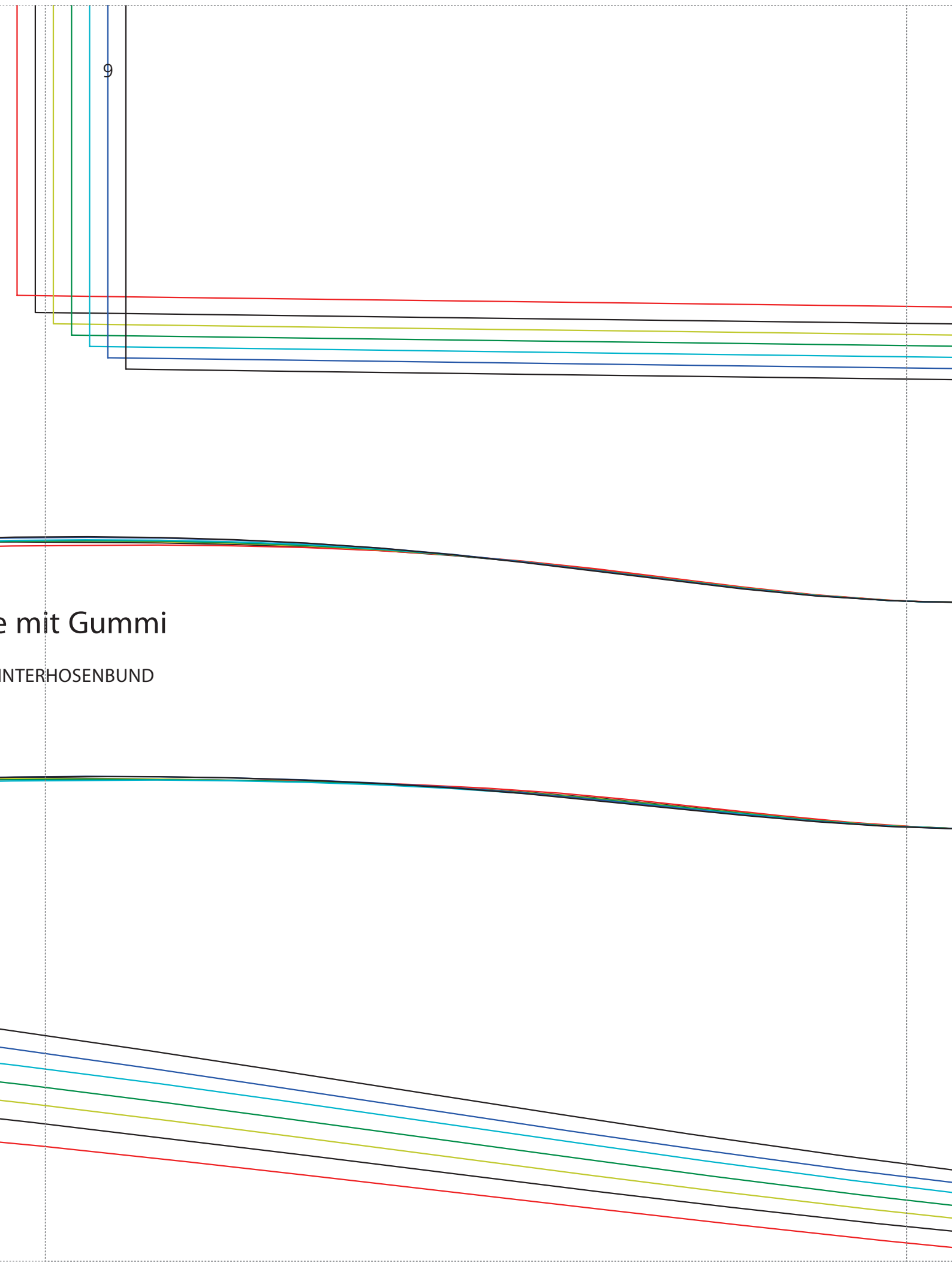


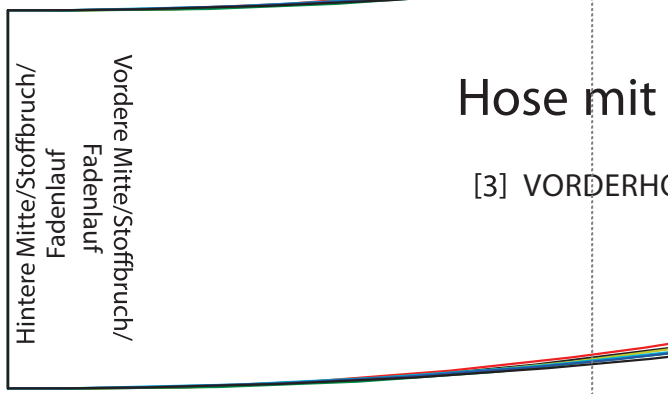
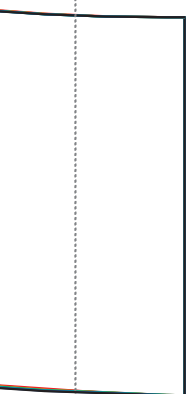
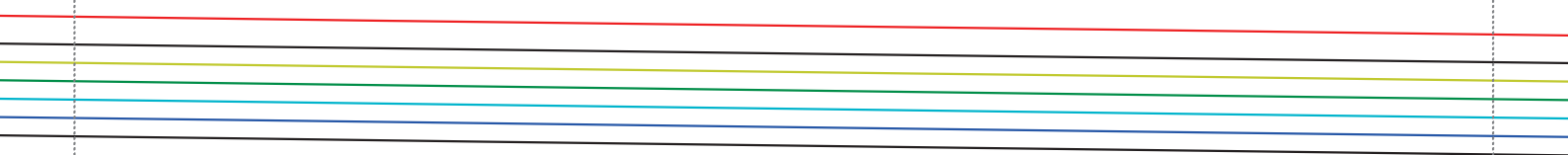


9

e mit Gummi

INTERHOSENBUND

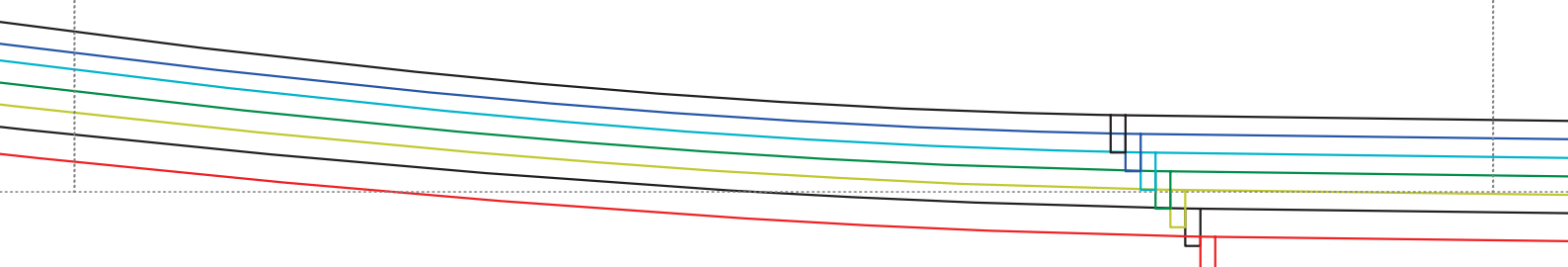


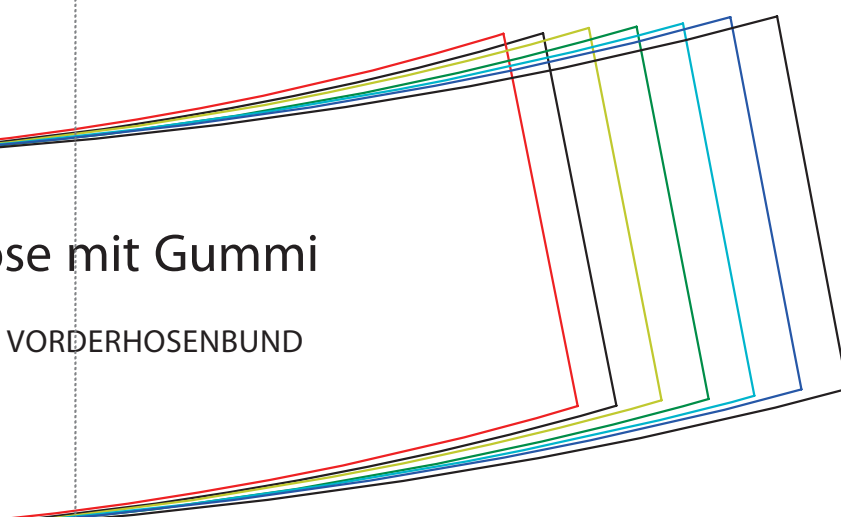
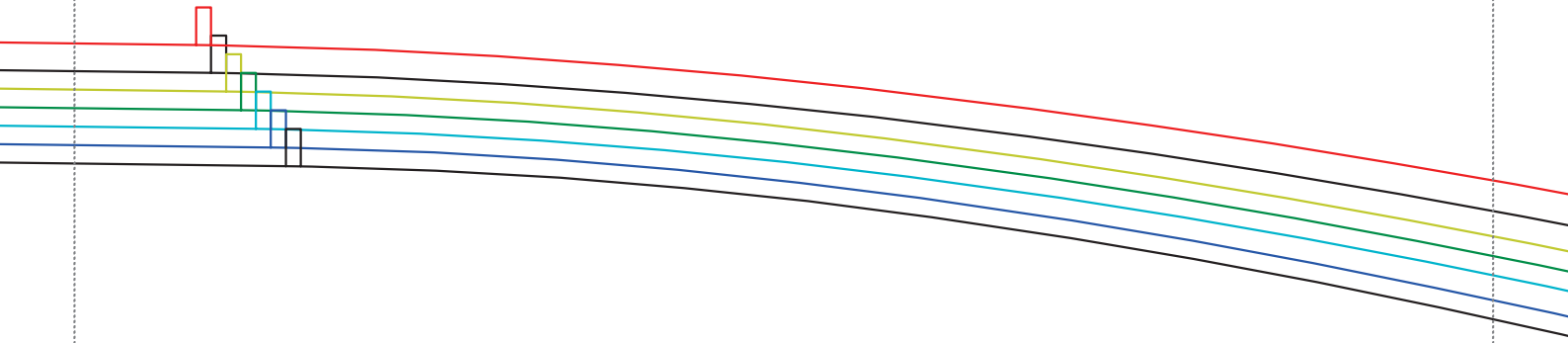


Hintere Mitte/Stoffbruch/  
Fadenlauf  
Vordere Mitte/Stoffbruch/  
Fadenlauf

Hose mit

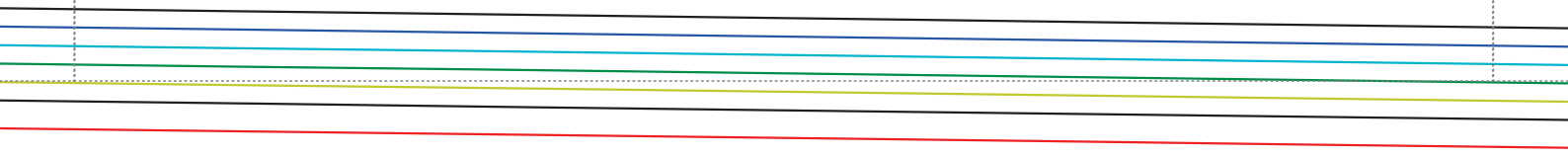
[3] VORDERHÖ

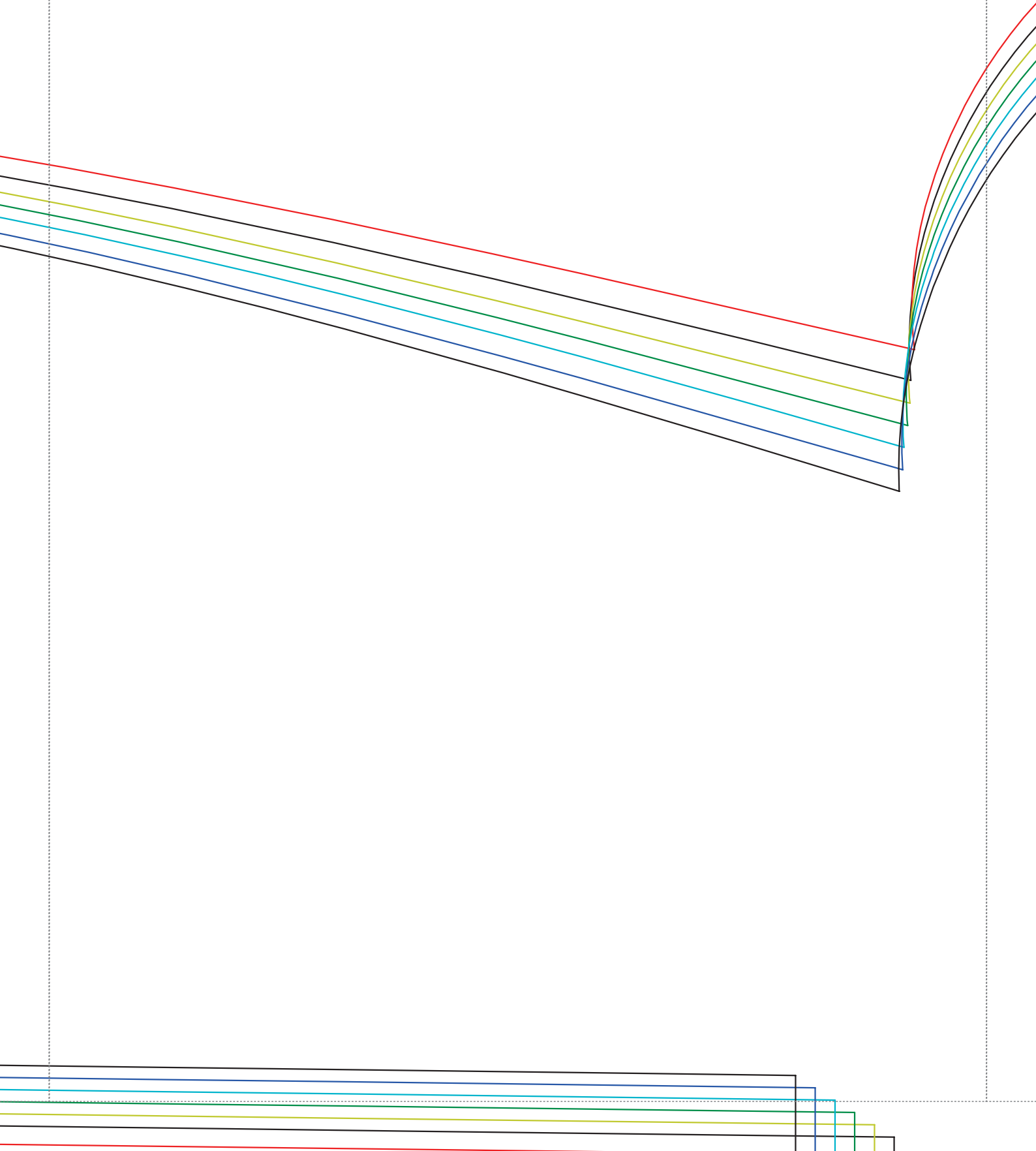




se mit Gummi

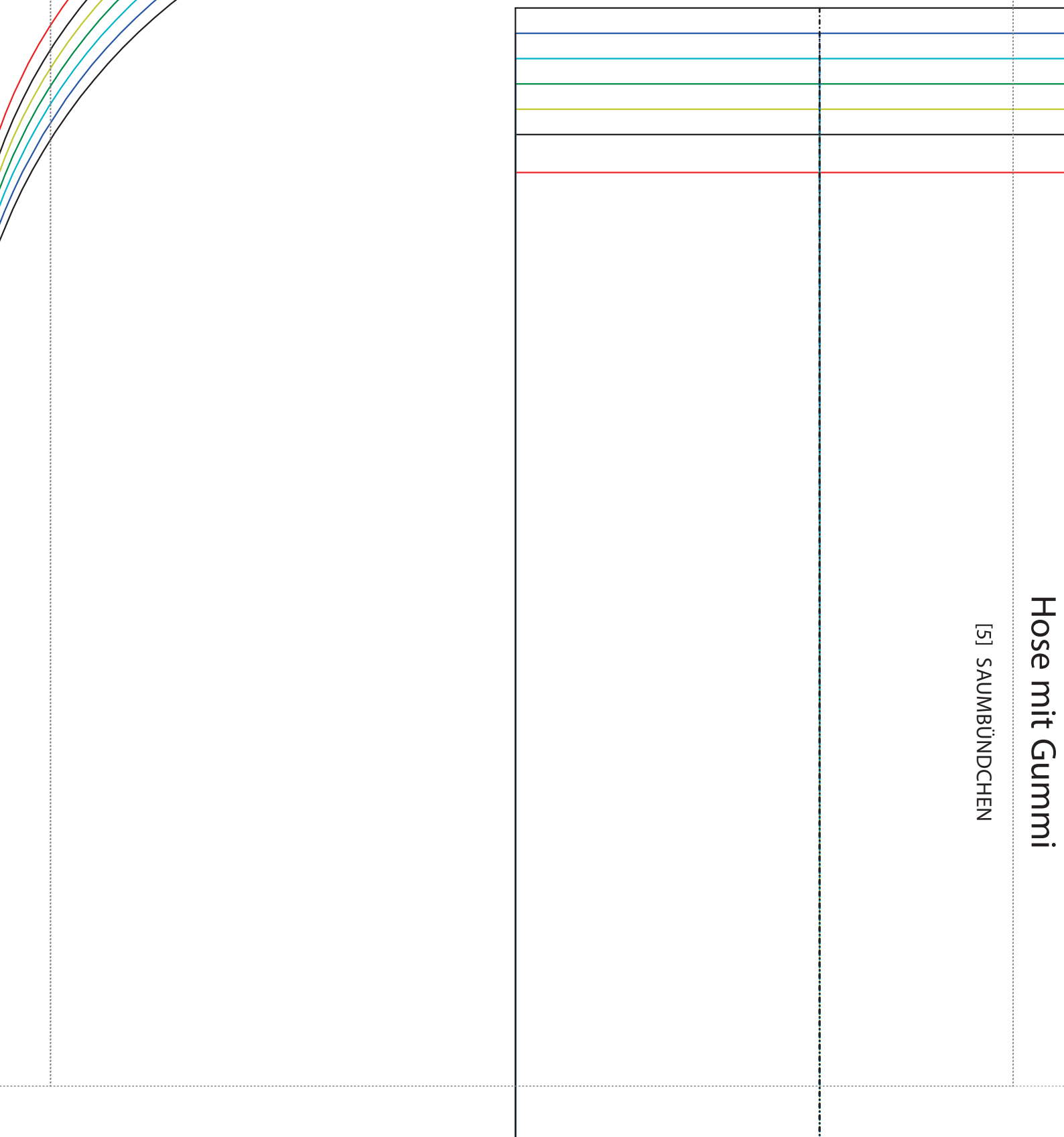
VORDERHOSENBUND



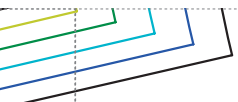


# Hose mit Gummi

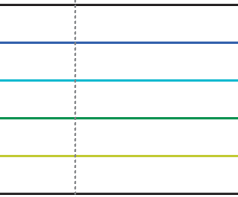
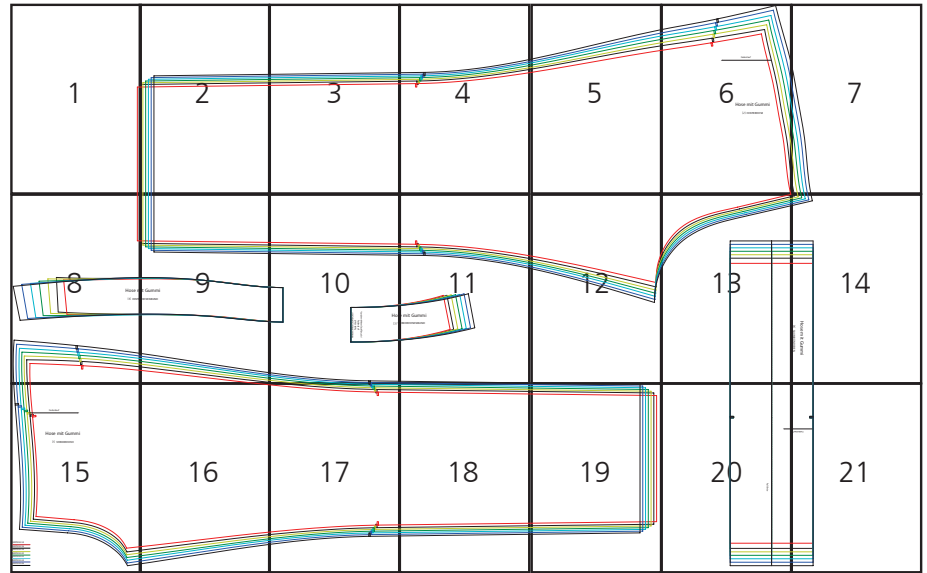
[5] SAUMBÜNDCHEN



13



14



# Hose mit Gummi

[5] SAUMBÜNDCHEN

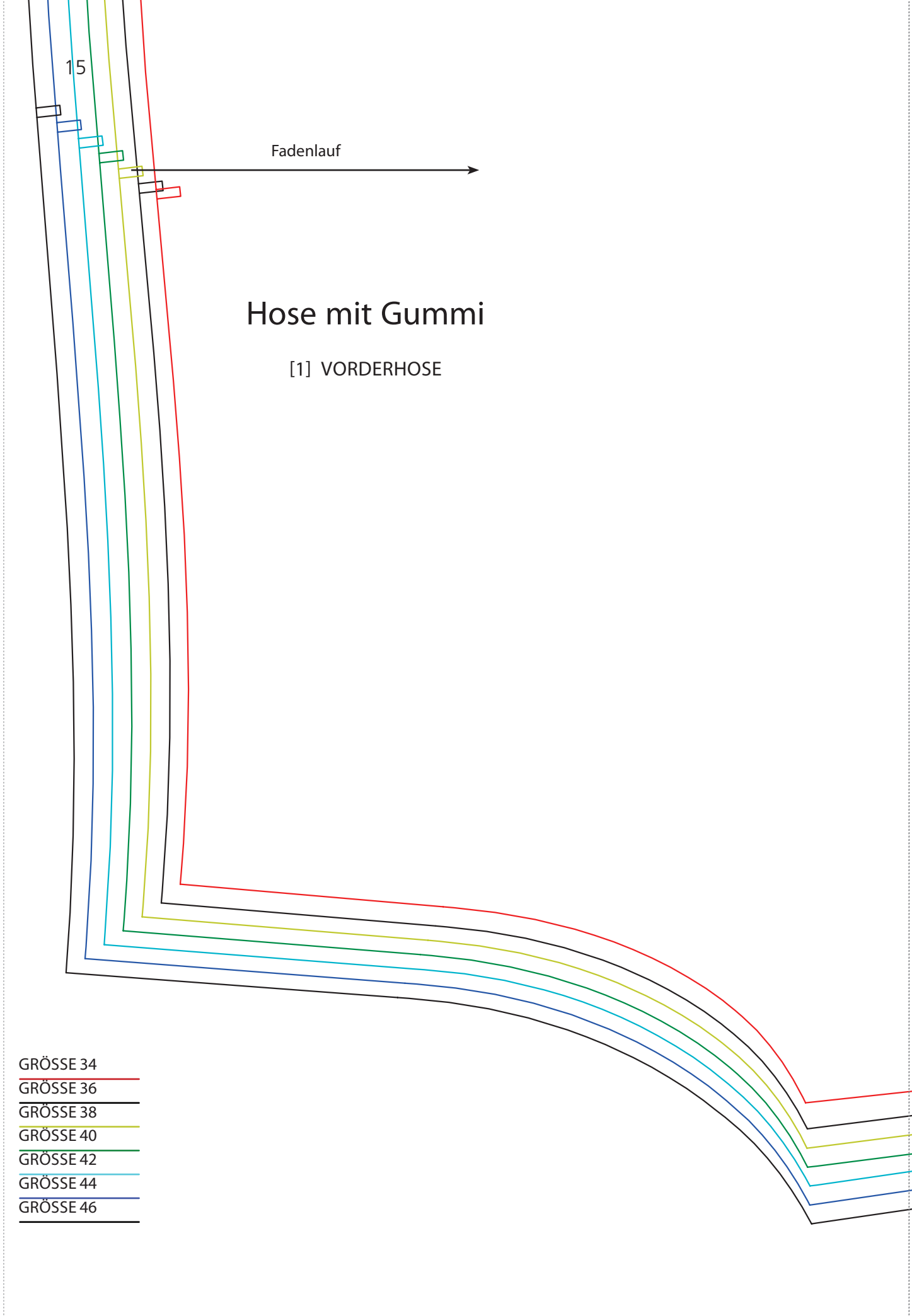
15

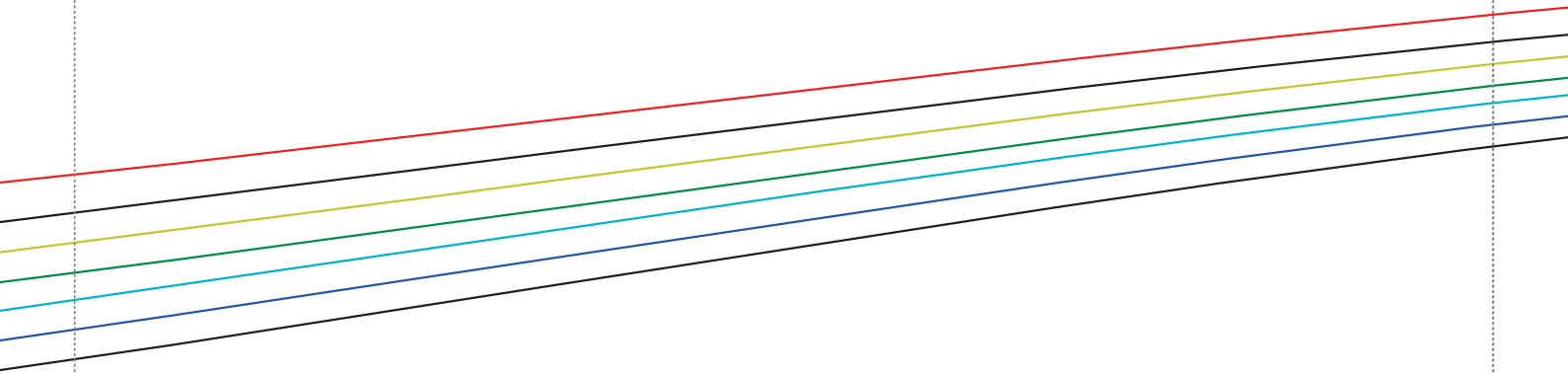
Fadenlauf

# Hose mit Gummi

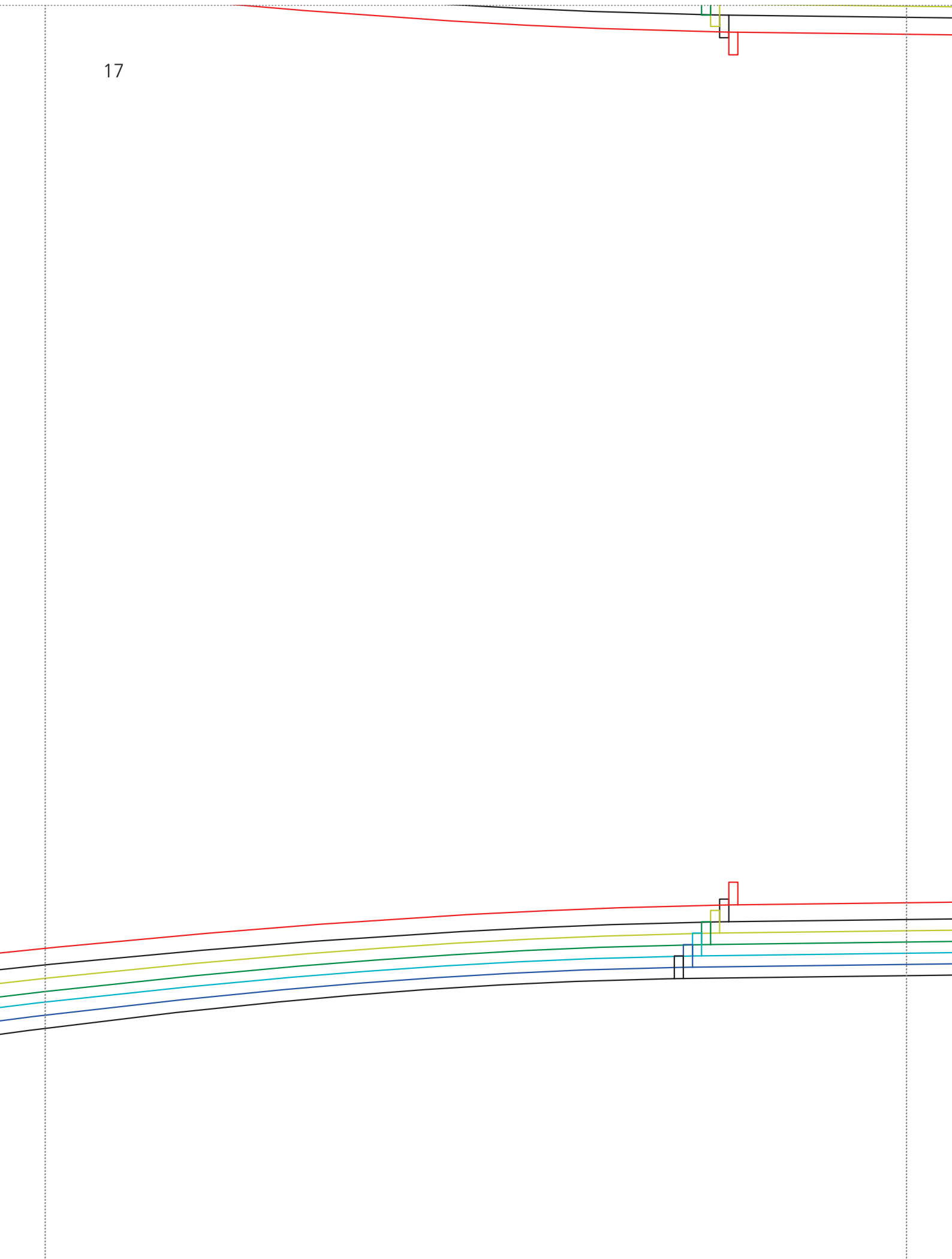
[1] VORDERHOSE

- GRÖSSE 34
- GRÖSSE 36
- GRÖSSE 38
- GRÖSSE 40
- GRÖSSE 42
- GRÖSSE 44
- GRÖSSE 46

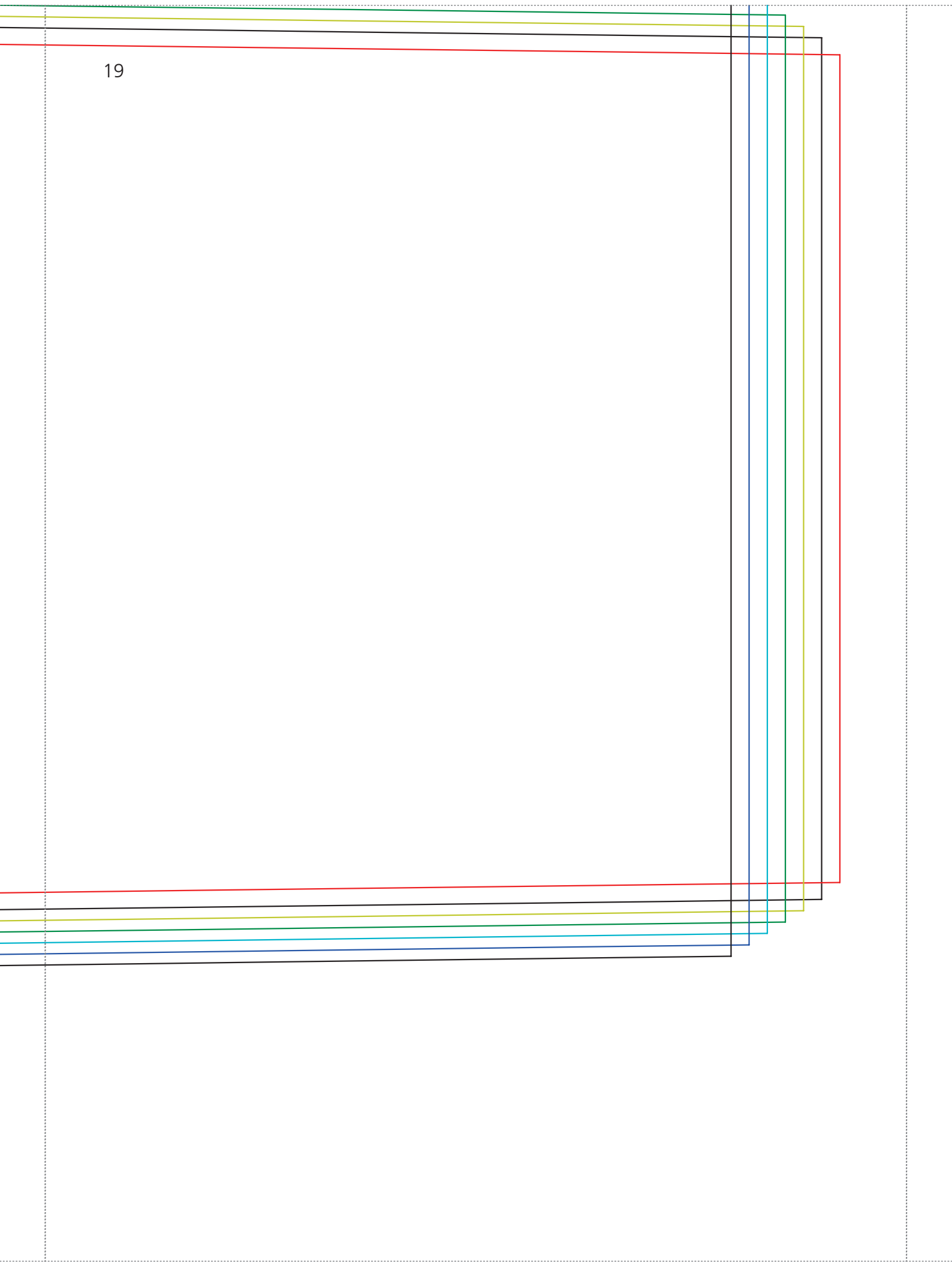






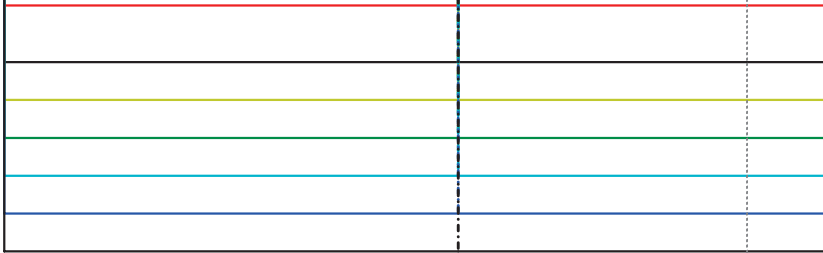
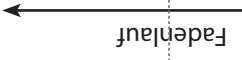








Faltlinie



21



Fadenlauf

