

bruch/Fadenlauf

Rückwärtige Mitte/Stoff

HEMDEN Kragensteg

HEMDEN



HEMDEN Manschette

HEMDEN



Fadenlauf


2 Schnittmuster ohne Größenanpassung, d.h. in tatsächlicher Grösse, ausdrucken.

Grösse anhand des Kontrollquadrates auf Seite 2 kontrollieren.

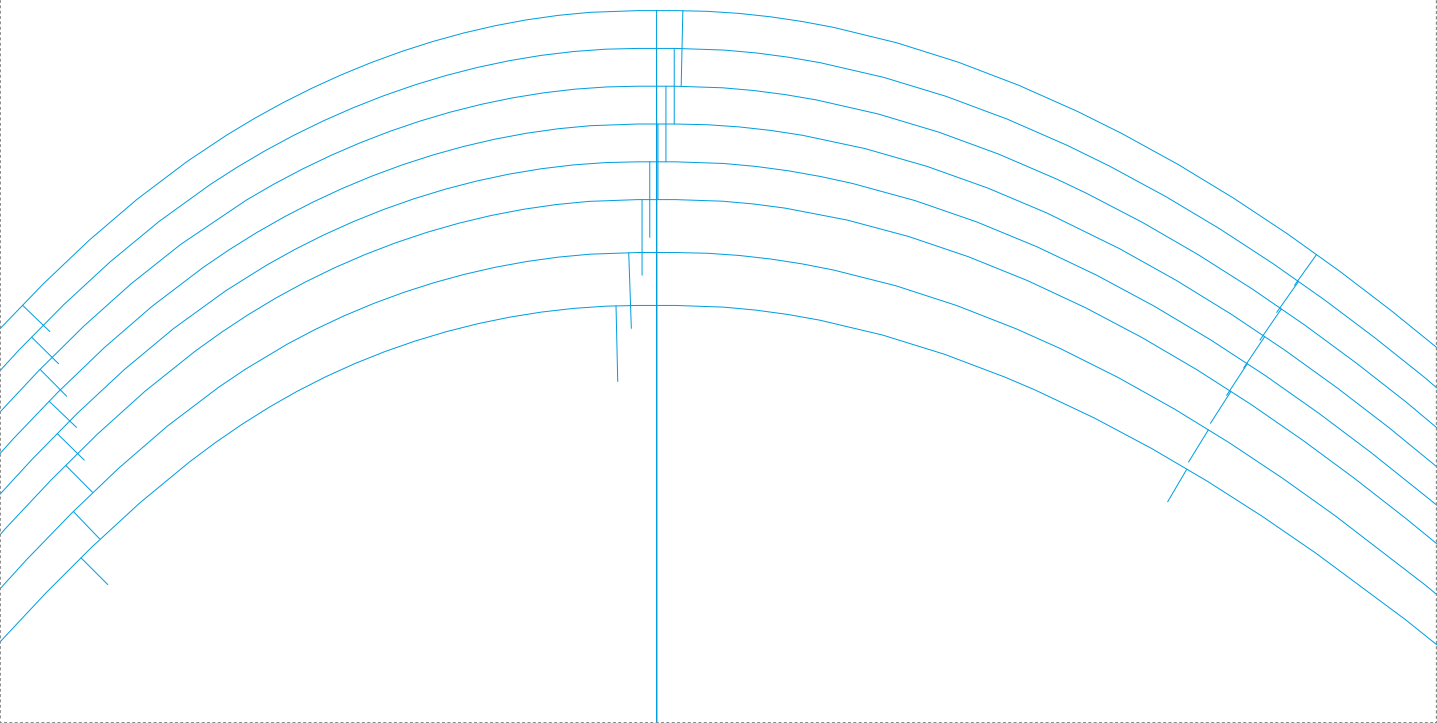
Entlang der gestrichelten Linien zusammenkleben gemäss Legeplan auf Seite 25.

Dieses Schnittmuster stammt aus dem Buch „Männerkleidung nähen, Herrenschnitte in Größe 46 bis 60.“

© frechverlag/Sebastian Hoofs

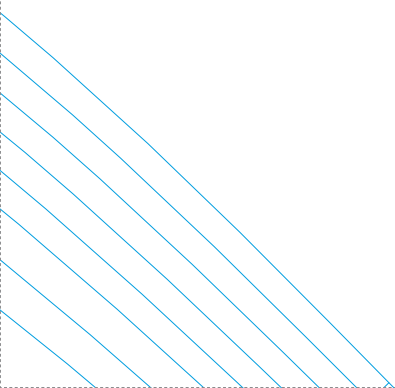


Kontrollquadrat
10x10 cm

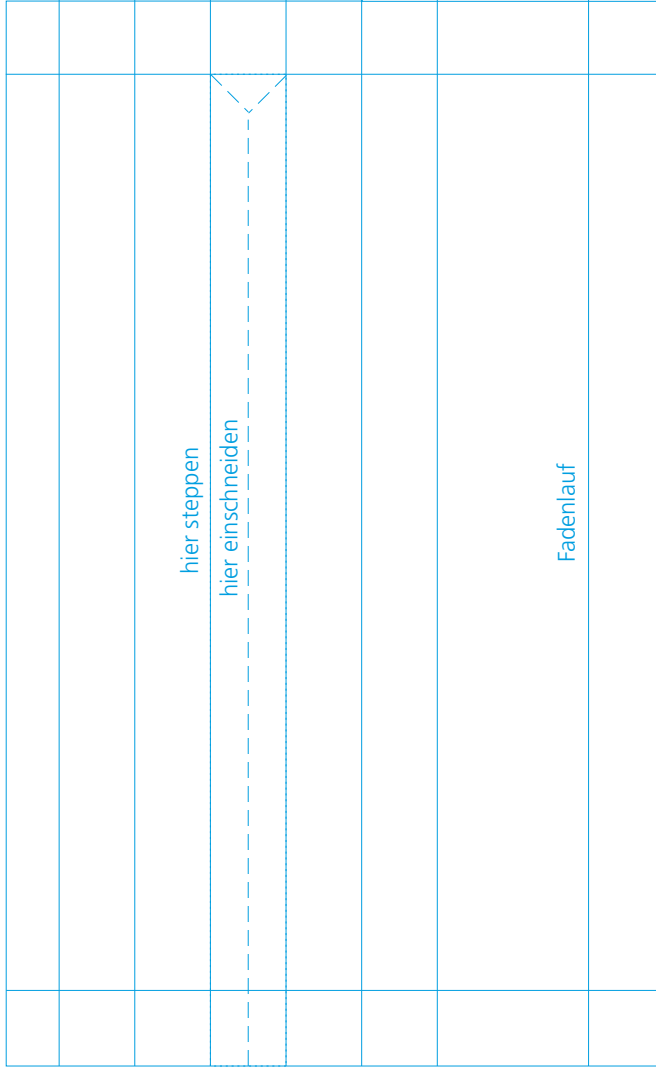


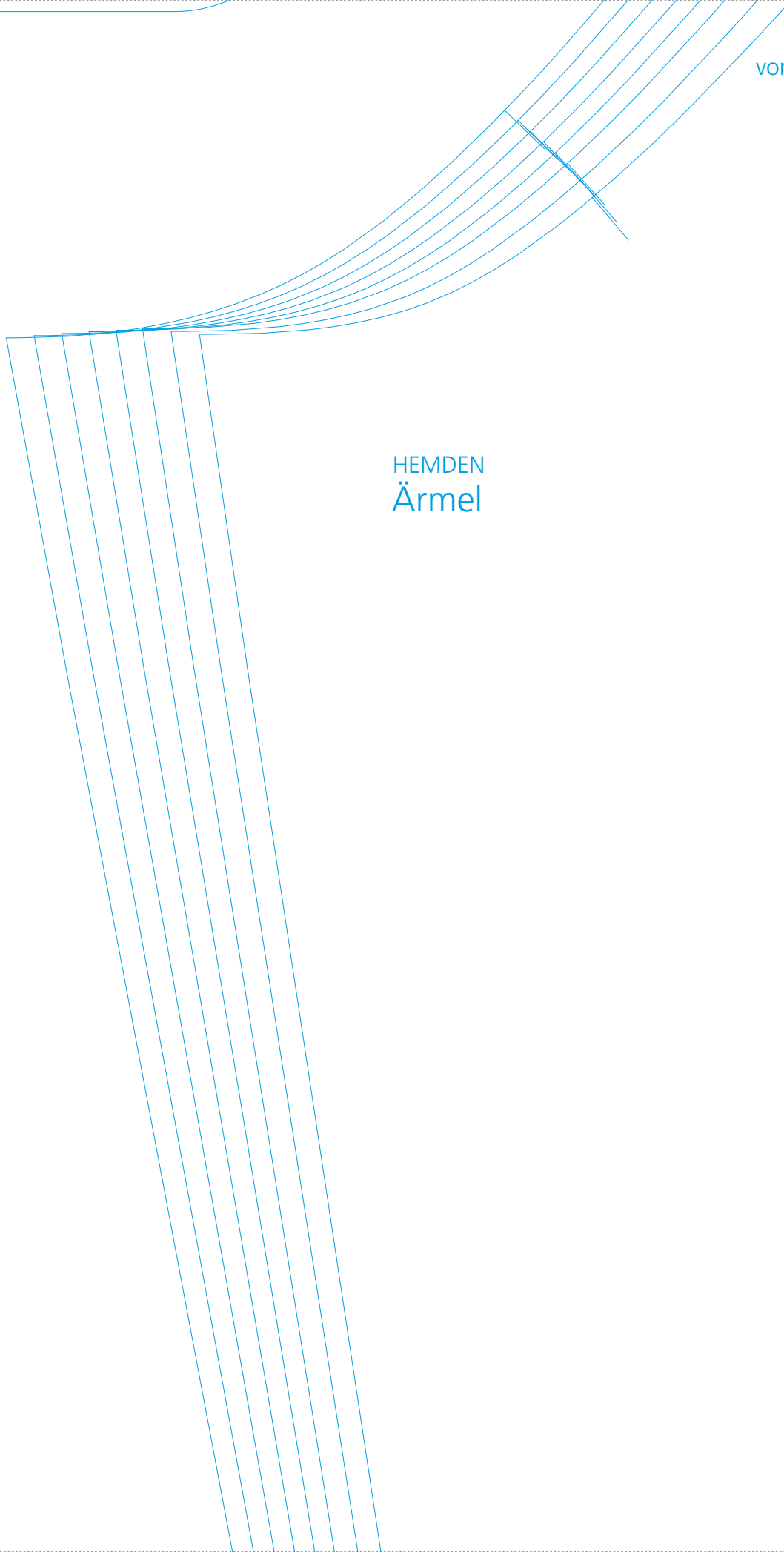
Rückwärtige Mitte/Stoffbruch/Fadenlauf

HEMDEN
Passe



HEMDEN Schlitzbeleg Ärmel











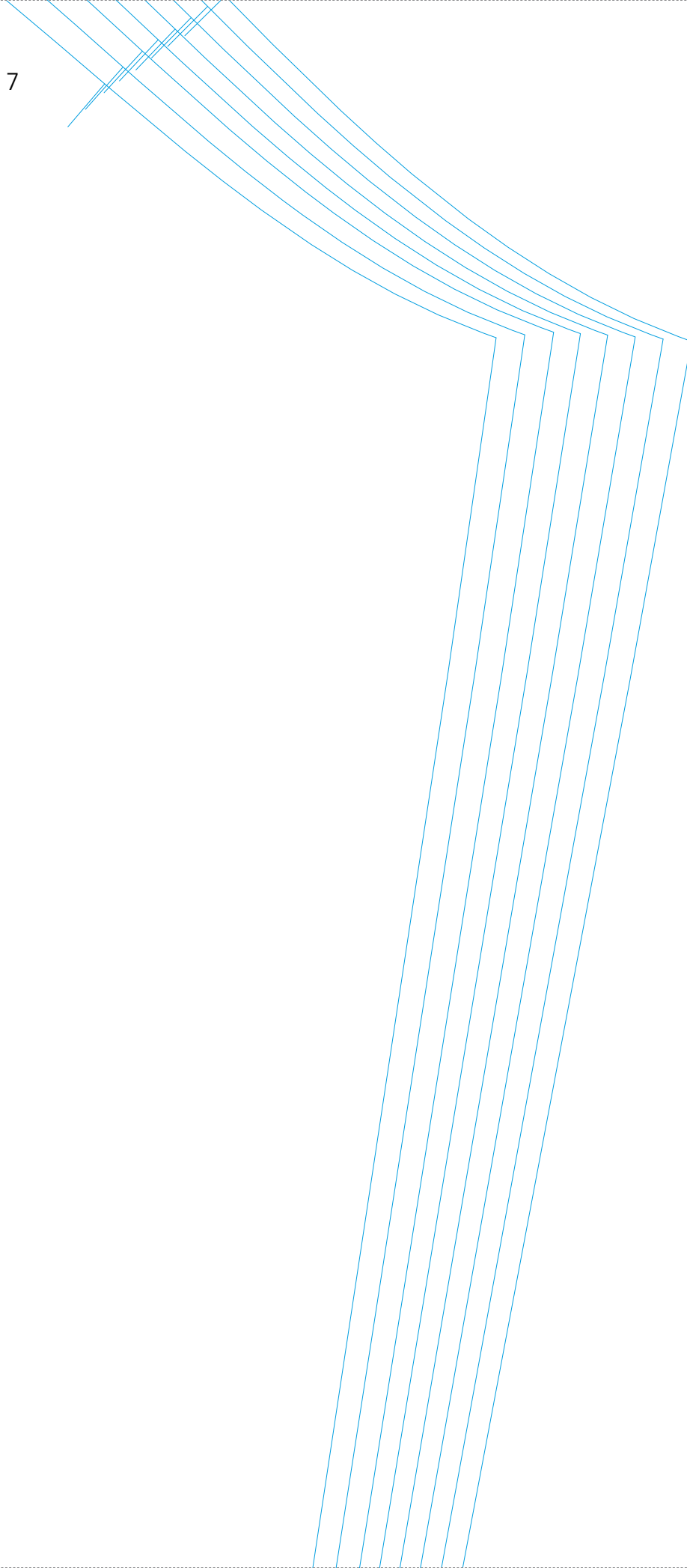


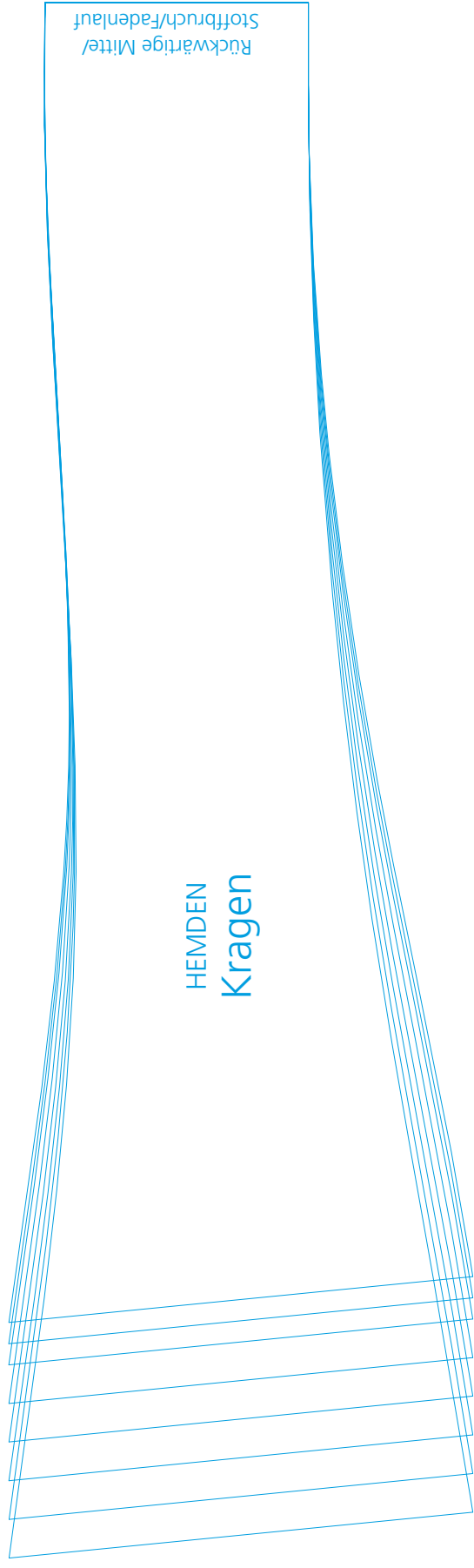
HEMDEN
Ärmel

Fadenlauf

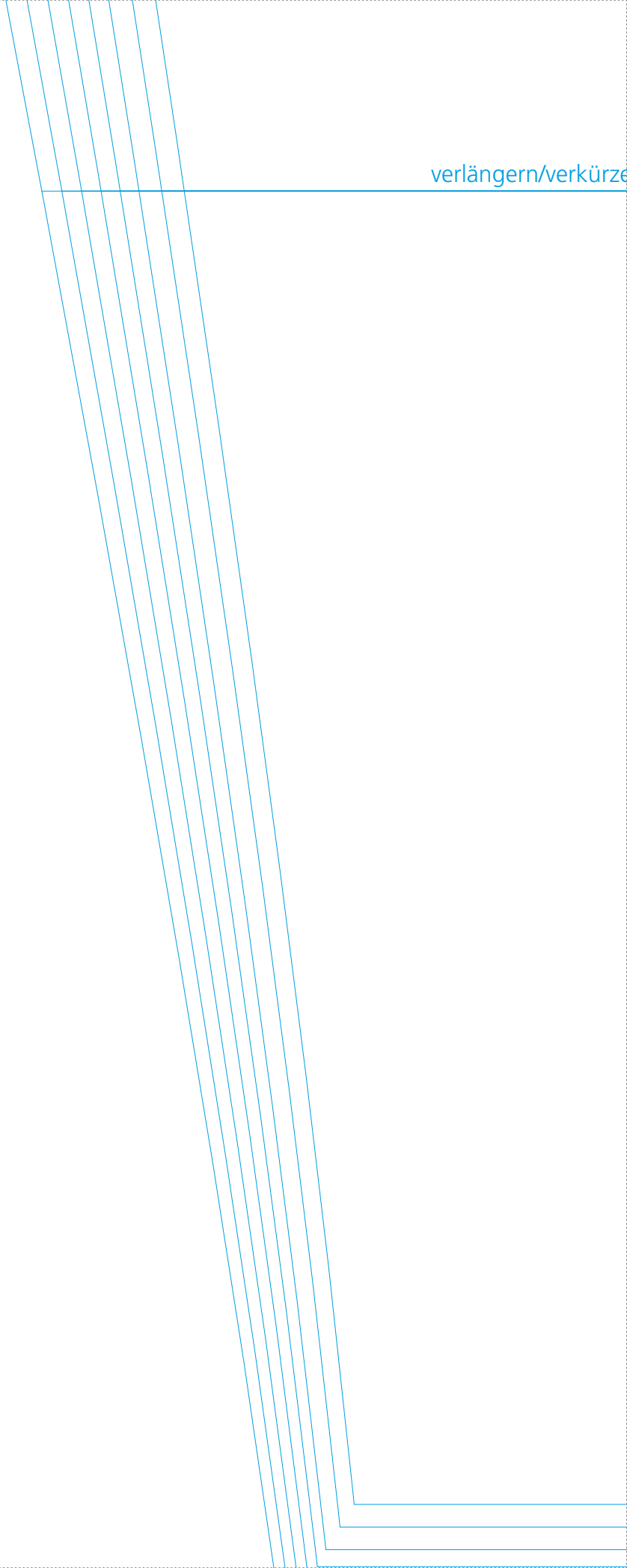
Knopfmarkierung
Leinenhemd

-  46
-  48
-  50
-  52
-  54
-  56
-  58
-  60

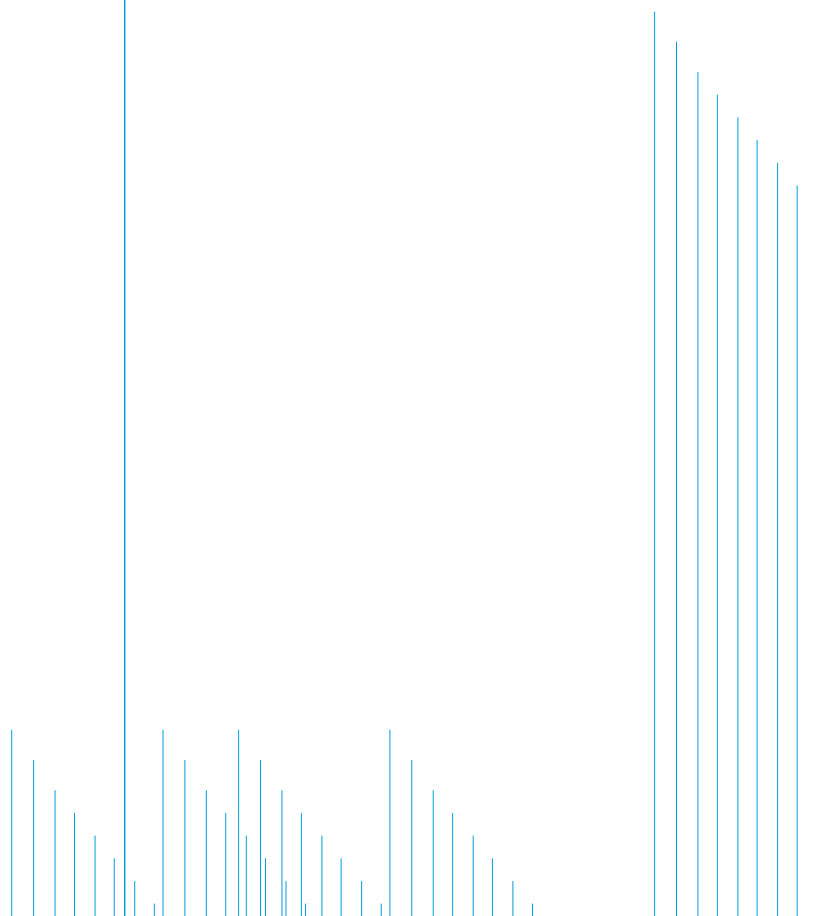




verlängern/verkürze



en: hier einschneiden




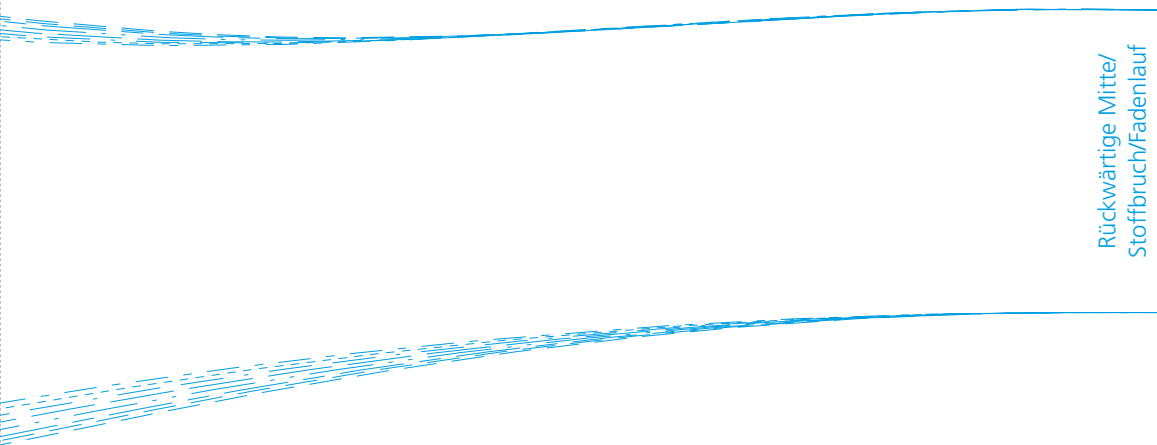
HEMDEN
Leinenhemd
Knopfleiste



HEMDEN
Jeanshemd
Kragen

Fadenlauf

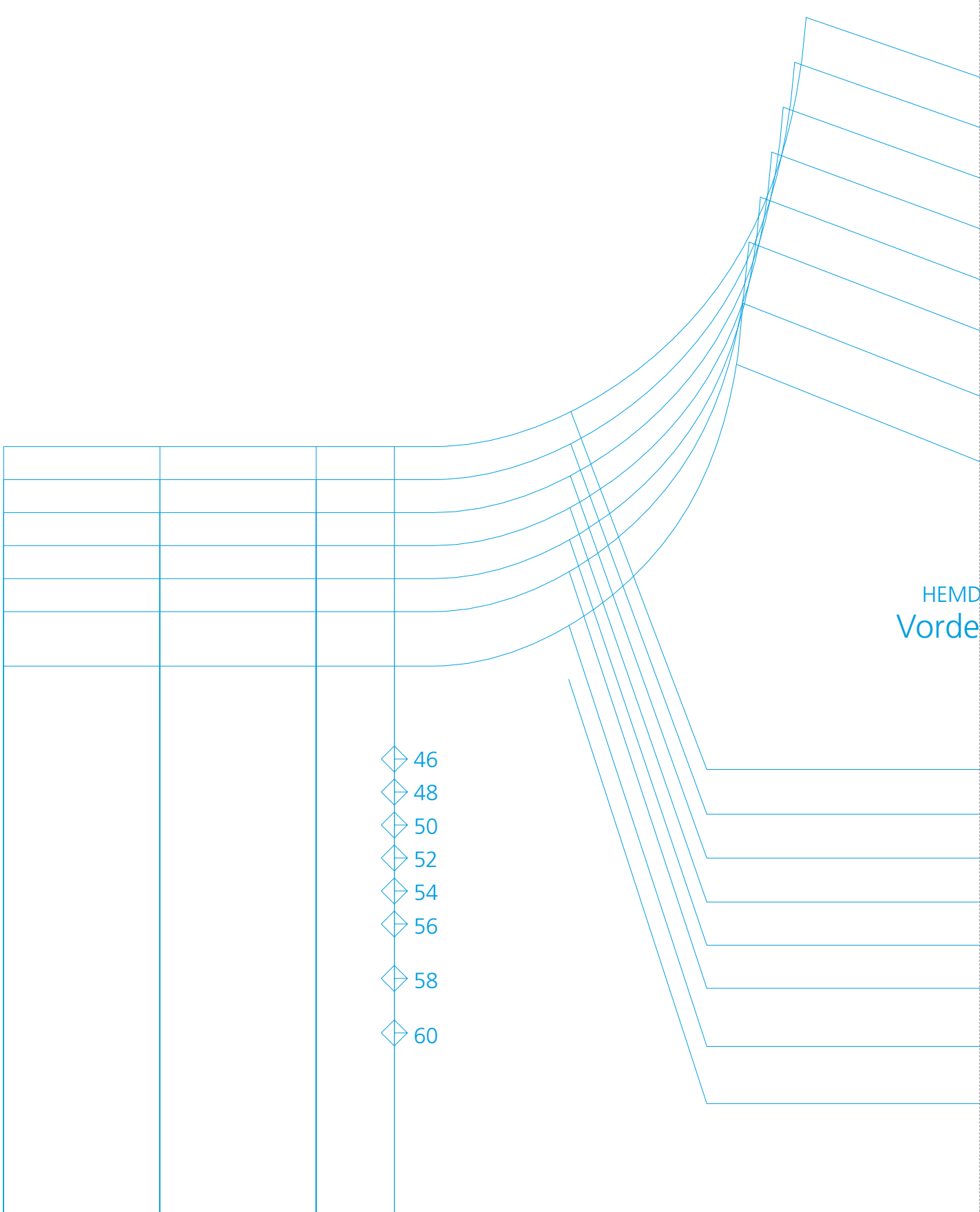
Fadenlauf	
	



Rückwärtige Mitte/
Stoffbruch/Fadenlauf

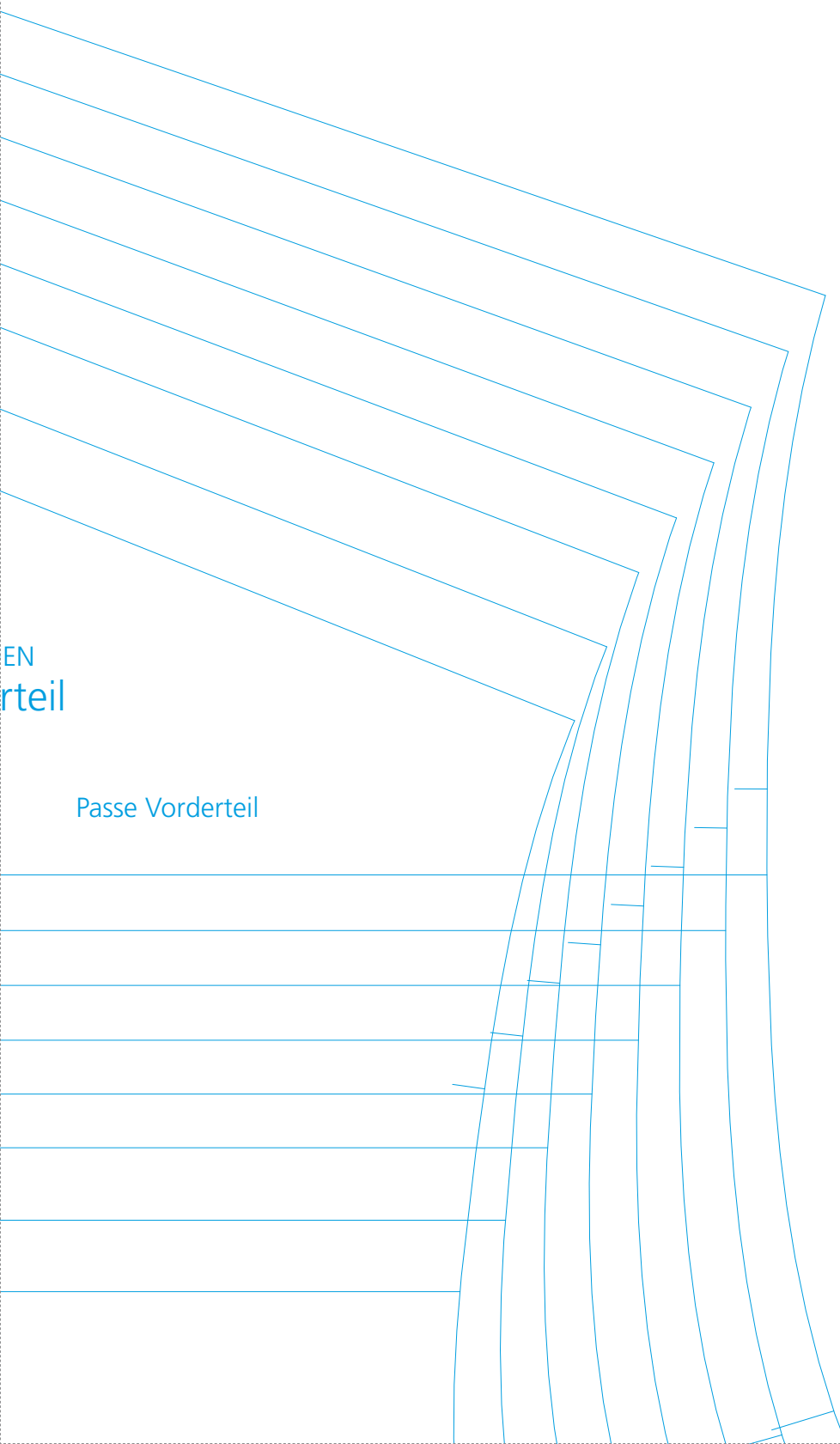
HEMDEN
Jeanshemd
Manschette





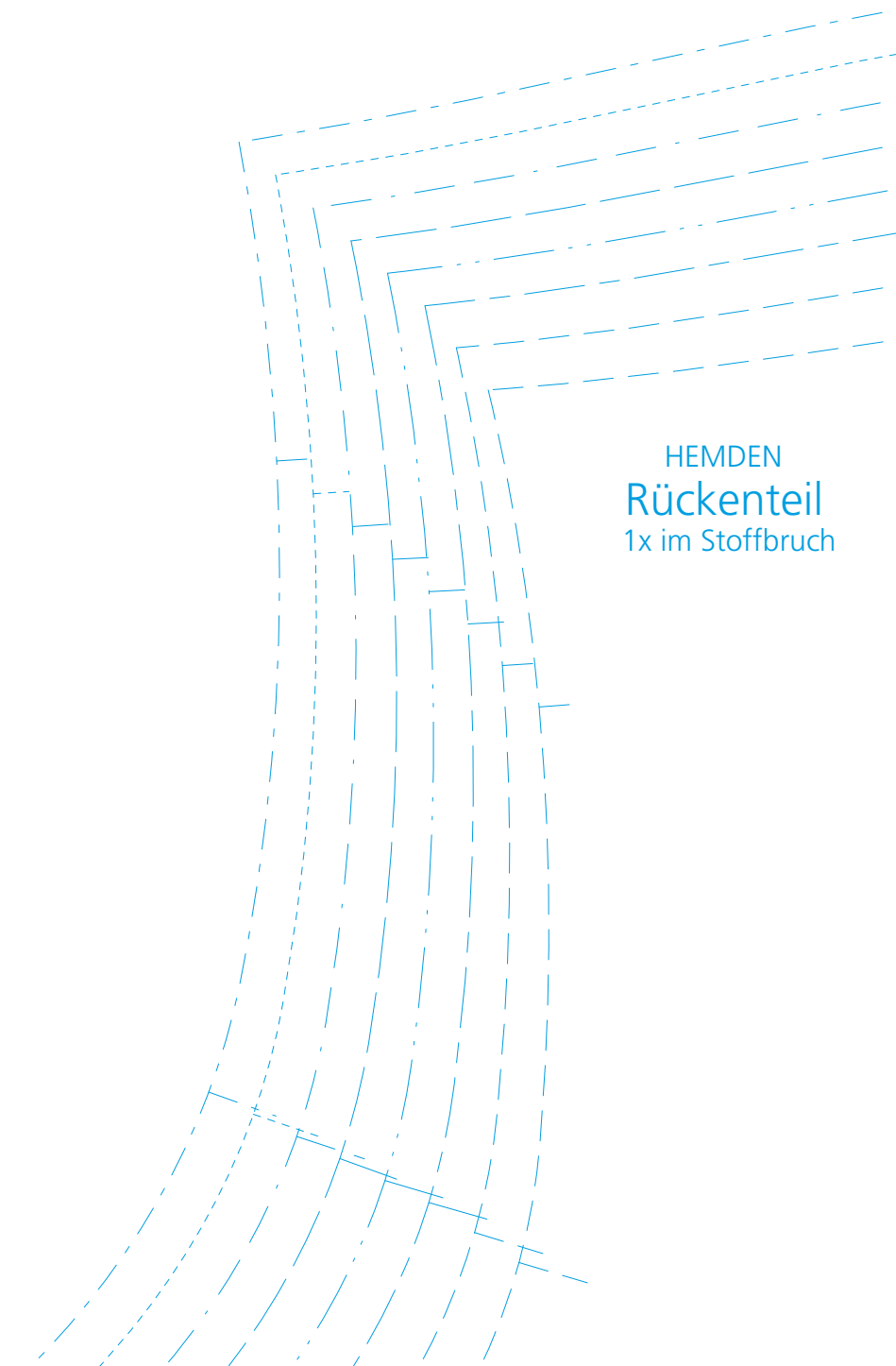
- ◇ 46
- ◇ 48
- ◇ 50
- ◇ 52
- ◇ 54
- ◇ 56
- ◇ 58
- ◇ 60

HEMD
Vorde

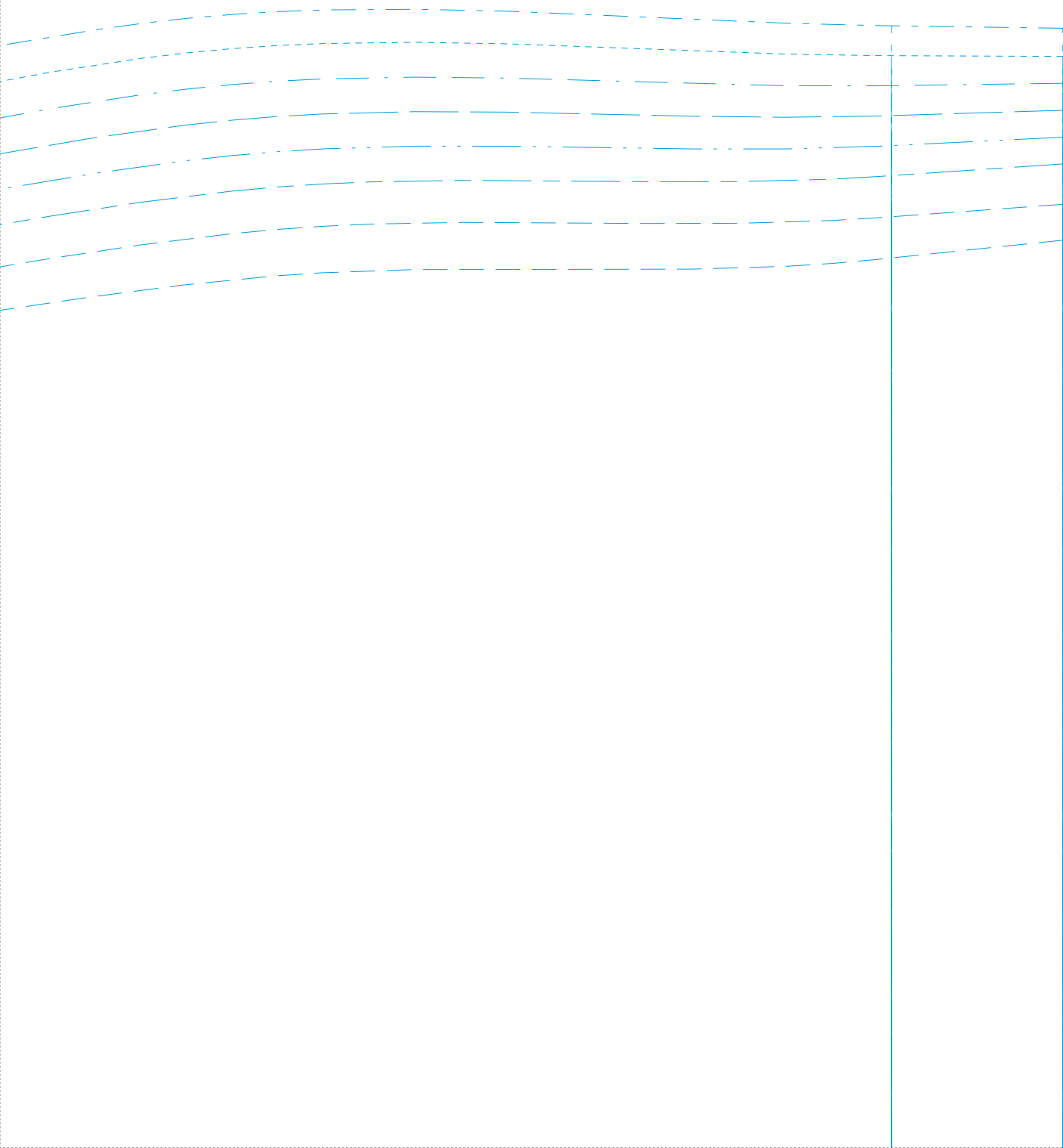


EN
rteil

Passe Vorderteil



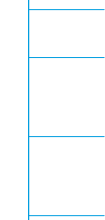
HEMDEN
Rückenteil
1x im Stoffbruch



- ◇ 46
- ◇ 48
- ◇ 50
- ◇ 52
- ◇ 54
- ◇ 56

◇ 58

◇ 60



◇ 46

◇ 48

◇ 50

◇ 52

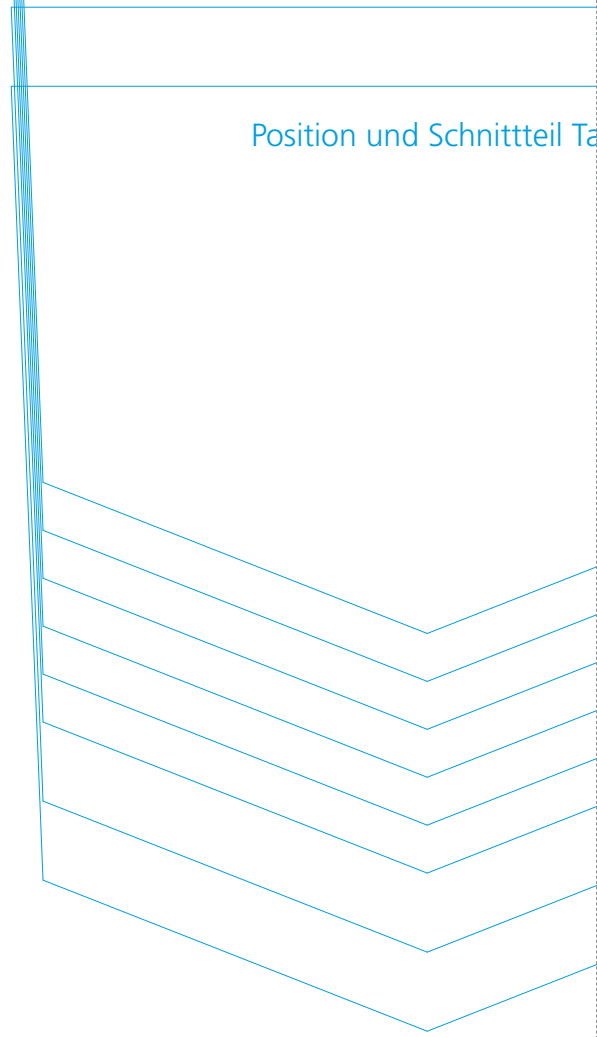
◇ 54

◇ 56

◇ 58

◇ 60

Position und Schnittteil Ta



verlängern/verkürzen: hier

◇ 46

◇ 48

◇ 50

◇ 52

◇ 54

◇ 56

◇ 58

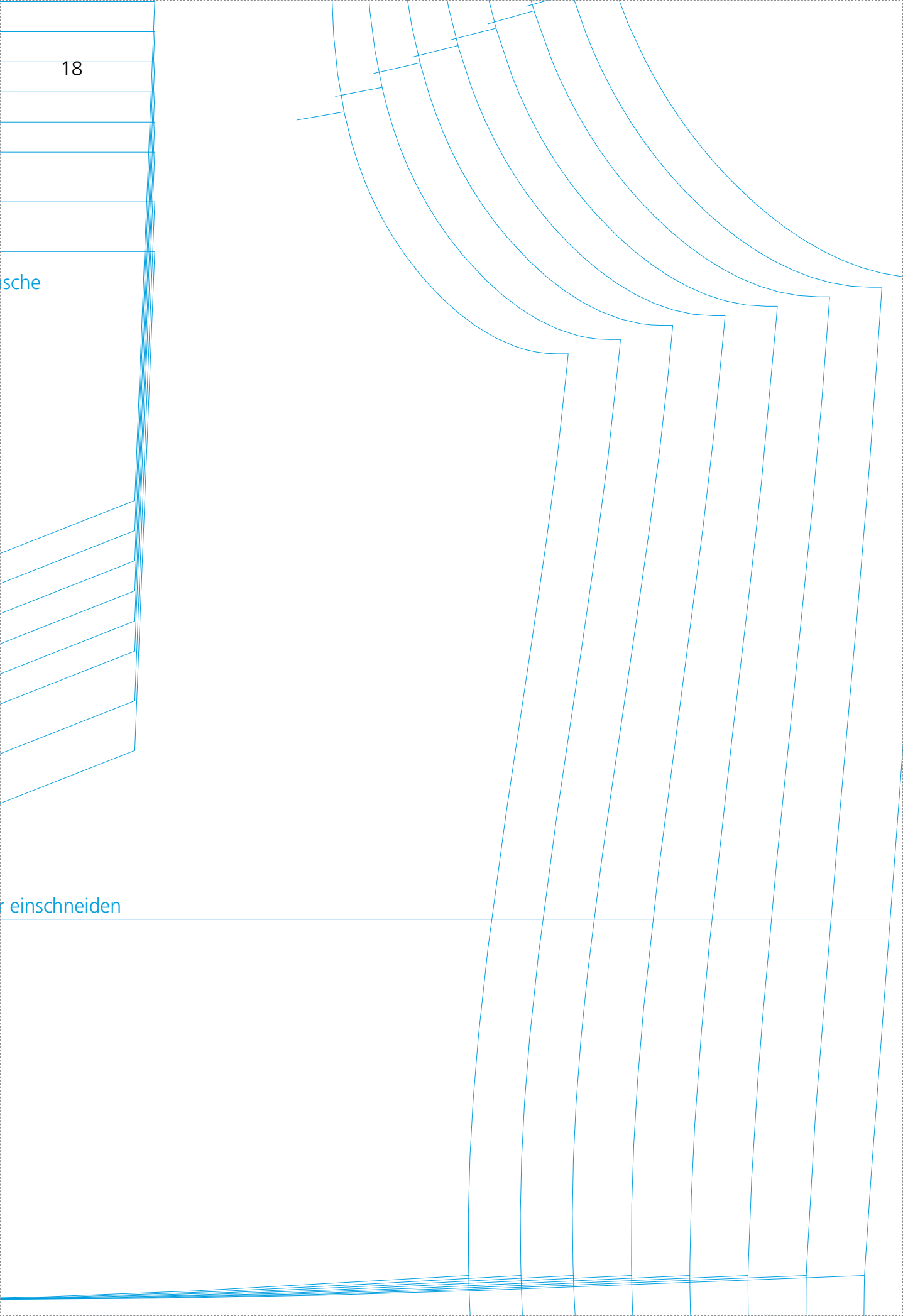
◇ 60

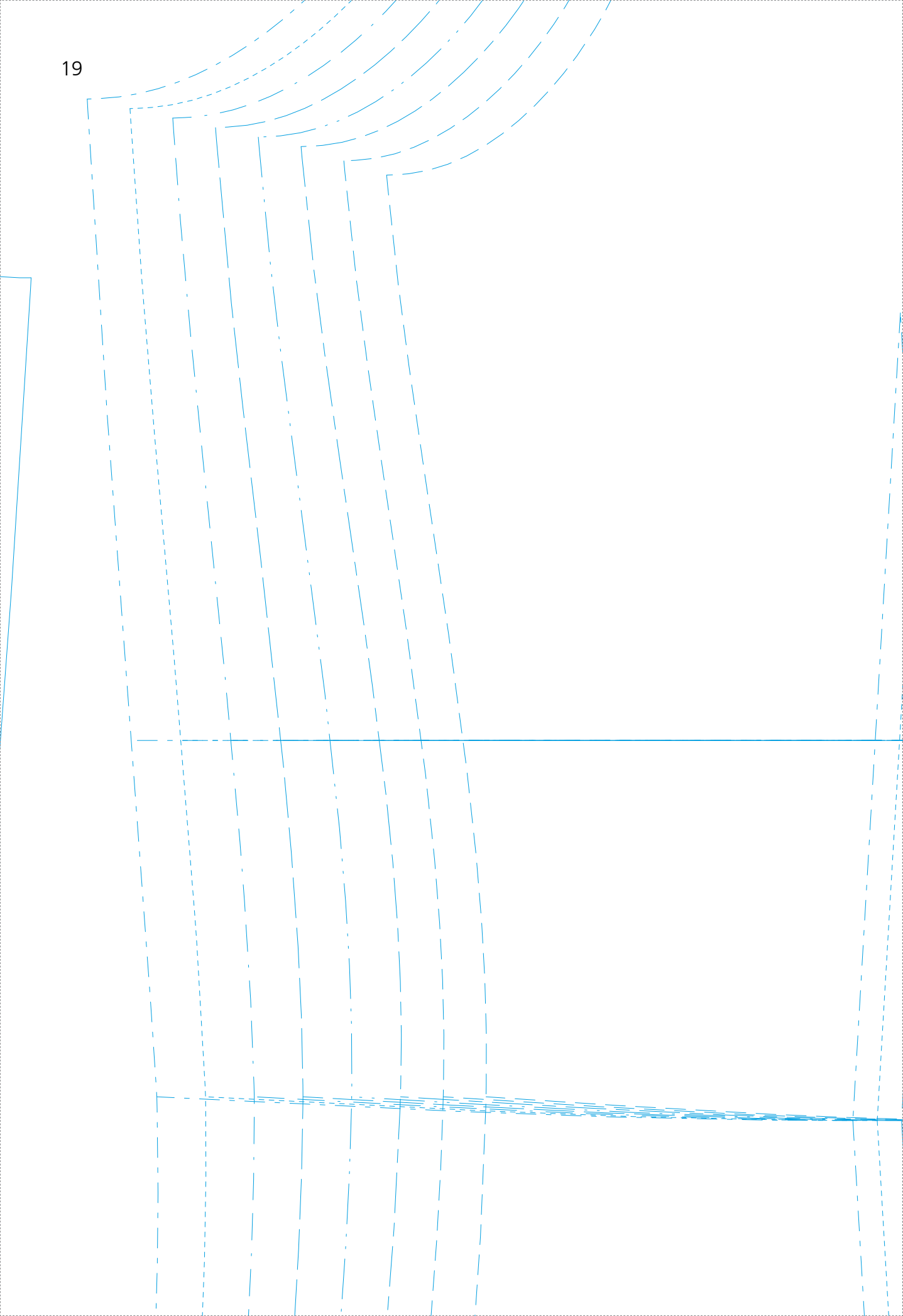
Taille

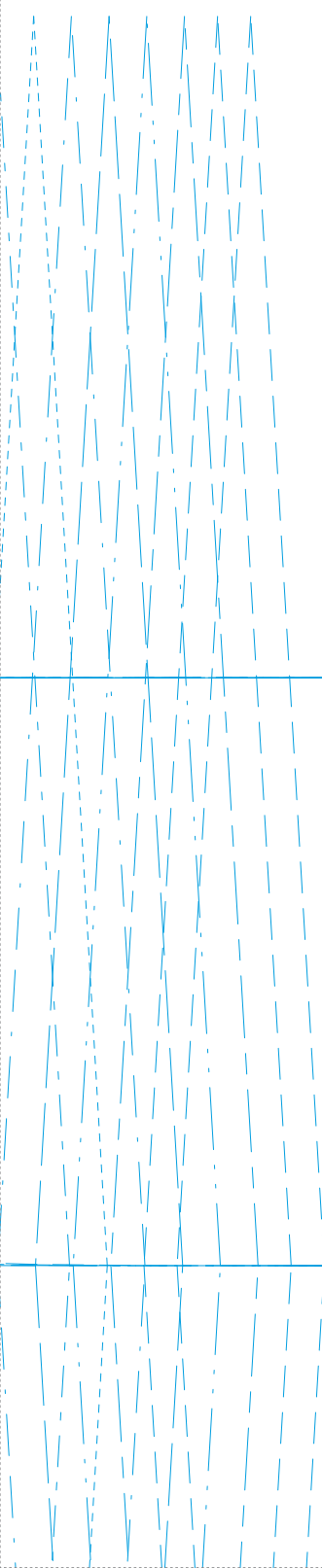
18

sche

r einschneiden







verlängern/verkürzen: hier einschneiden

Taille

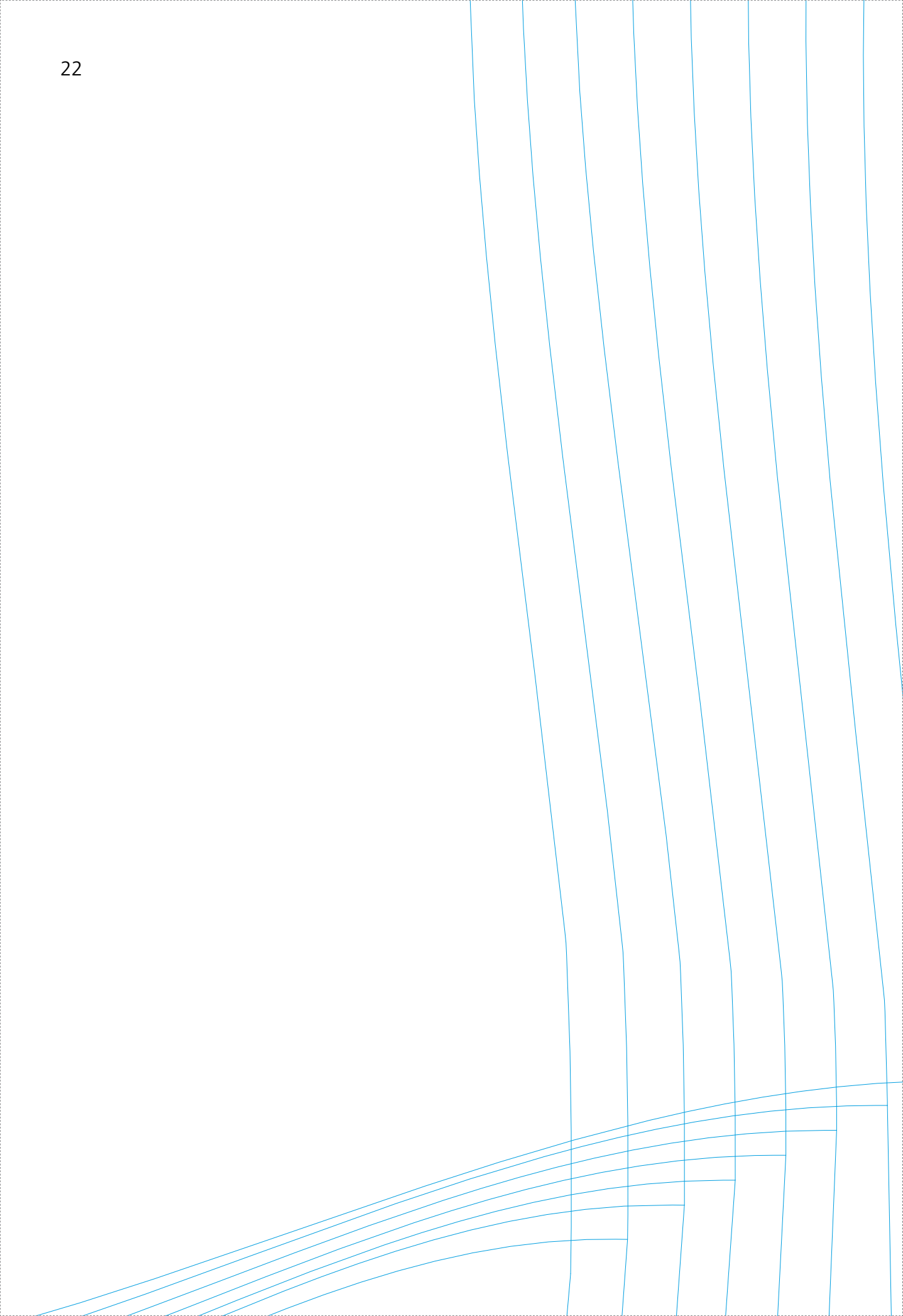
Mitte/Stoffbruch/Fadenlauf (Casual Hemd; Jeanshemd)

Rückwärtige Mitte/Stoffbruch/Fadenlauf (Leinenhemd)

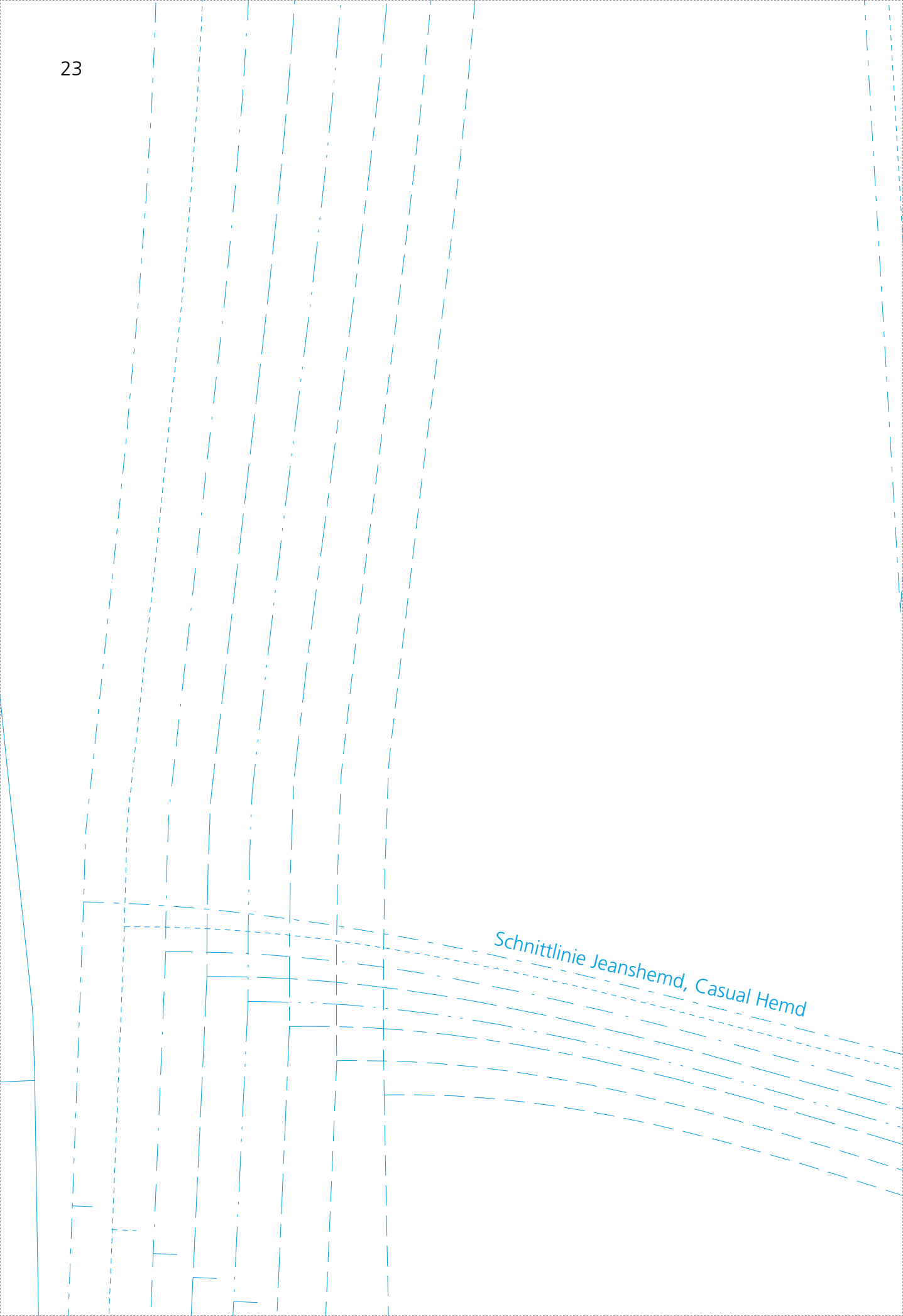
Schnittkante rechte Seite

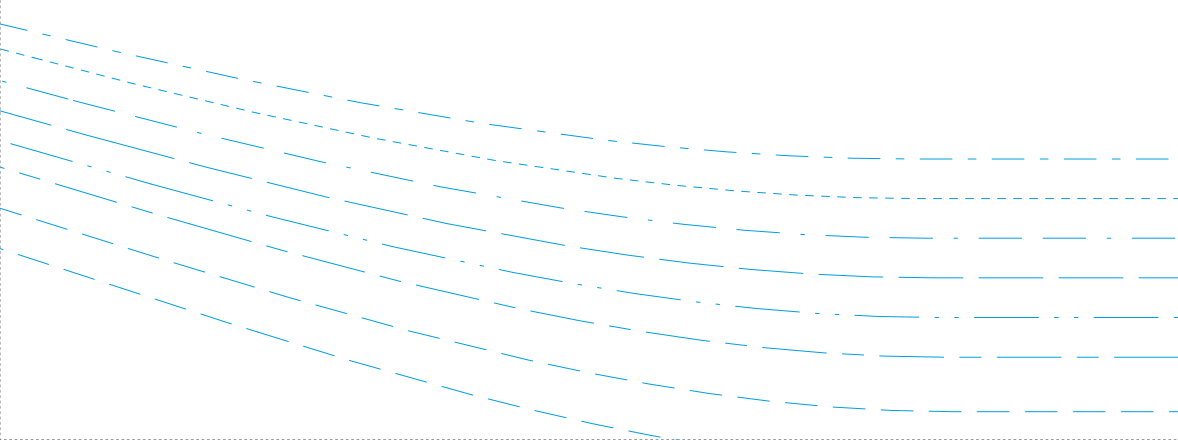
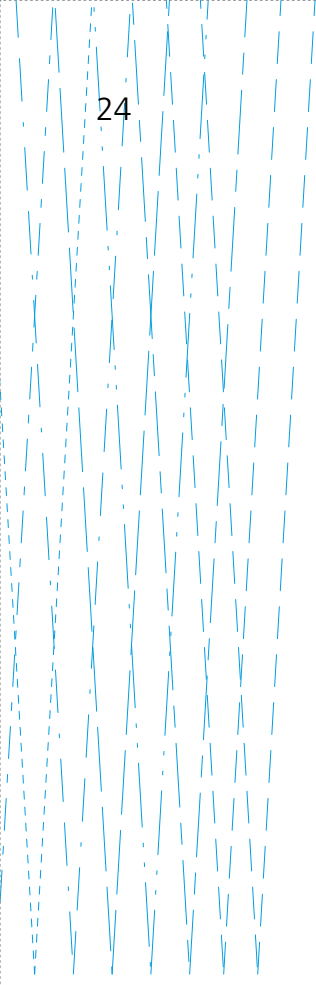
Vordere Mitte/Fadenlauf/Stoffbruch (nur Leinenhemd)

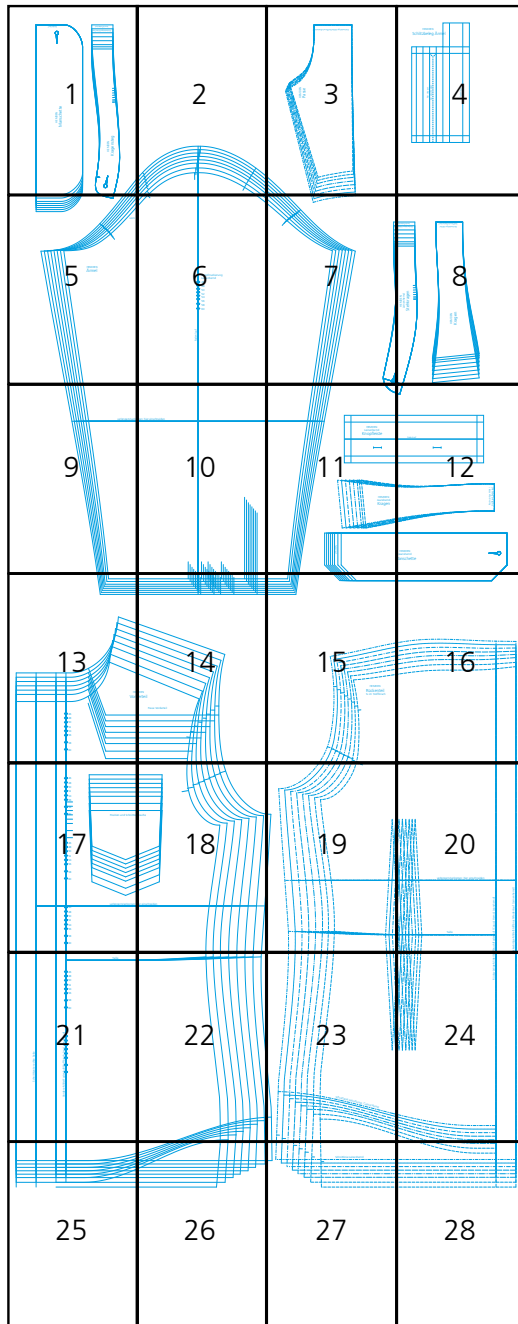
- ◇ 46
- ◇ 48
- ◇ 50
- ◇ 52
- ◇ 54
- ◇ 56
- ◇ 58
- ◇ 60

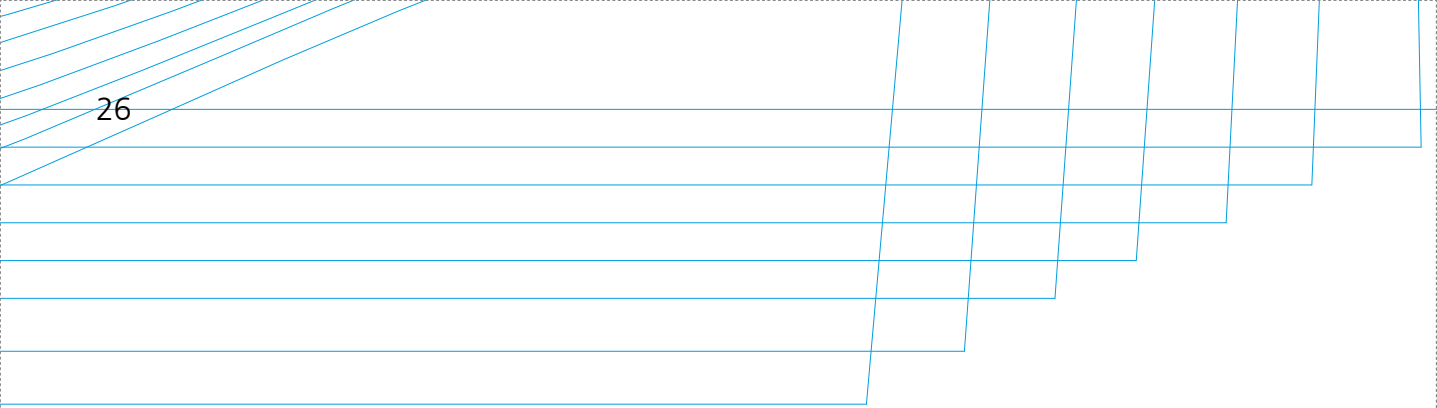


Schnittlinie Jeanshemd, Casual Hemd









Schnittlinie Leinenhemd

27

