

1 Schnittmuster ohne Größenanpassung, d.h. in tatsächlicher Grösse, ausdrucken.

Grösse anhand des Kontrollquadrates auf Seite 1 kontrollieren.

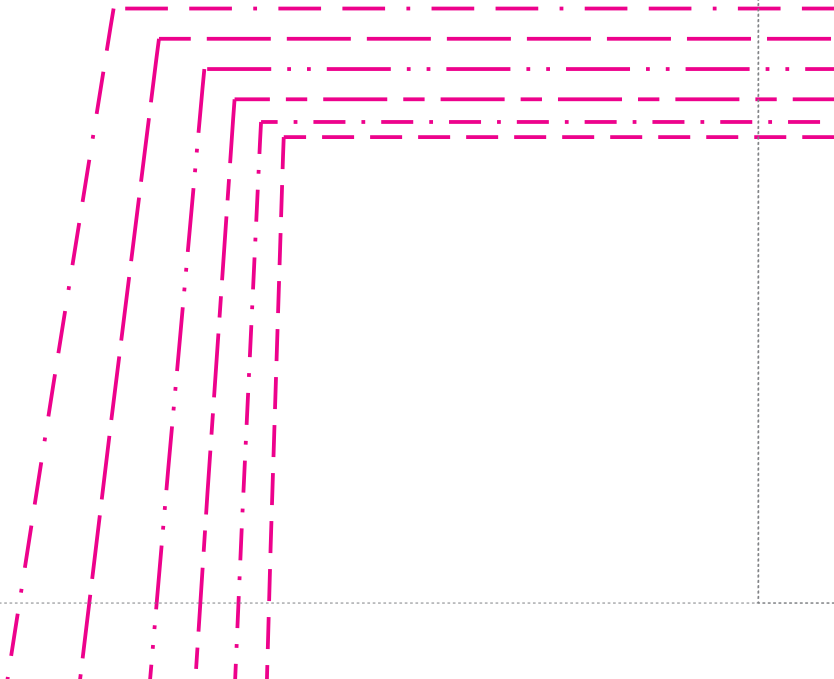
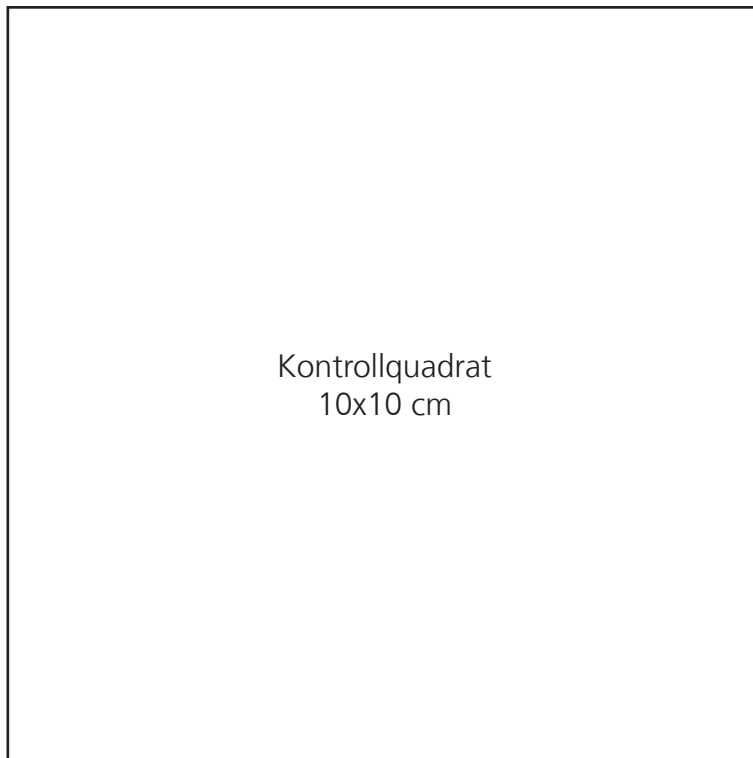
Entlang der gestrichelten Linien zusammenkleben gemäss Legeplan auf Seite 2.

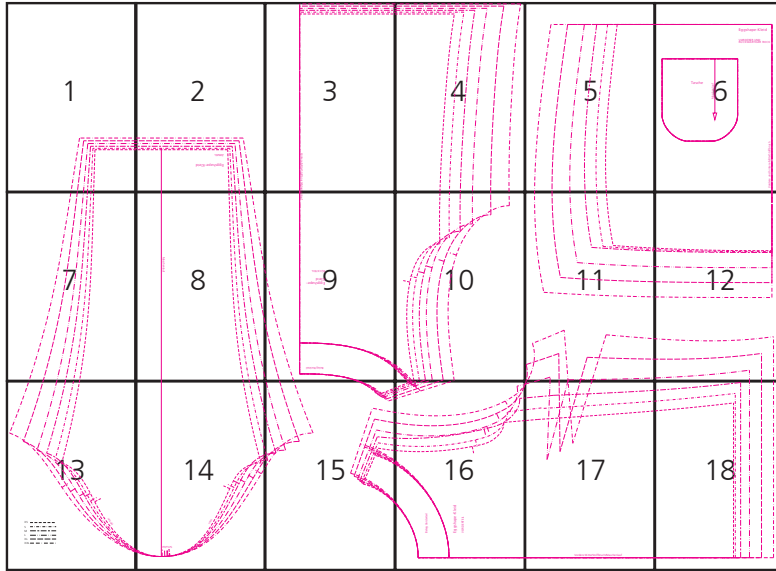
Dieses Schnittmuster stammt aus dem Buch „Das ultimative Jersey-Nähbuch, Über 40 Lieblingsideen für Frauen“

128 Seiten, 21,5 x 28,5 cm, Hardcover

ISBN 978-3-7724-4808-9

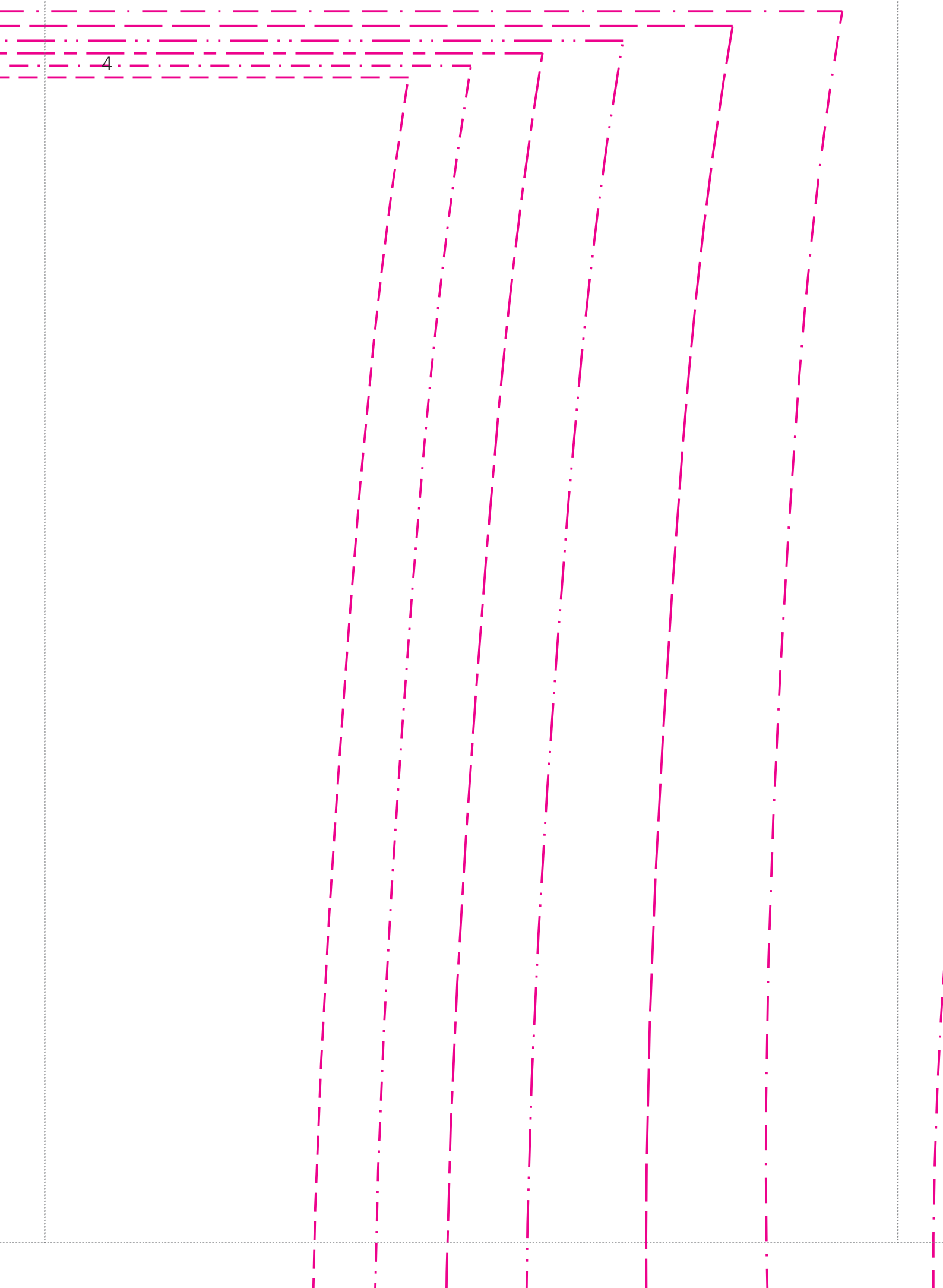
© frechverlag

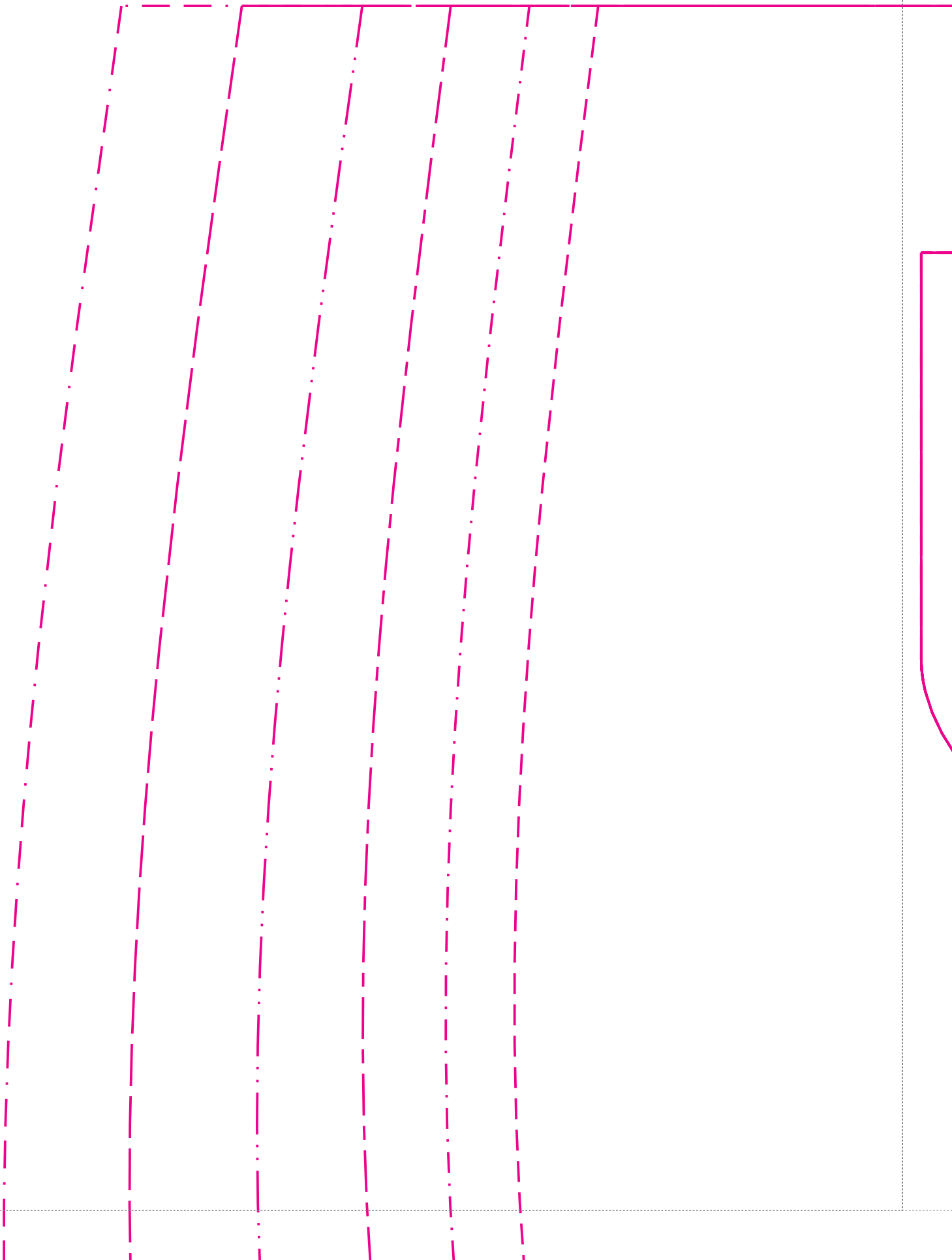




Eggshape-Kleid
ÄRMEL

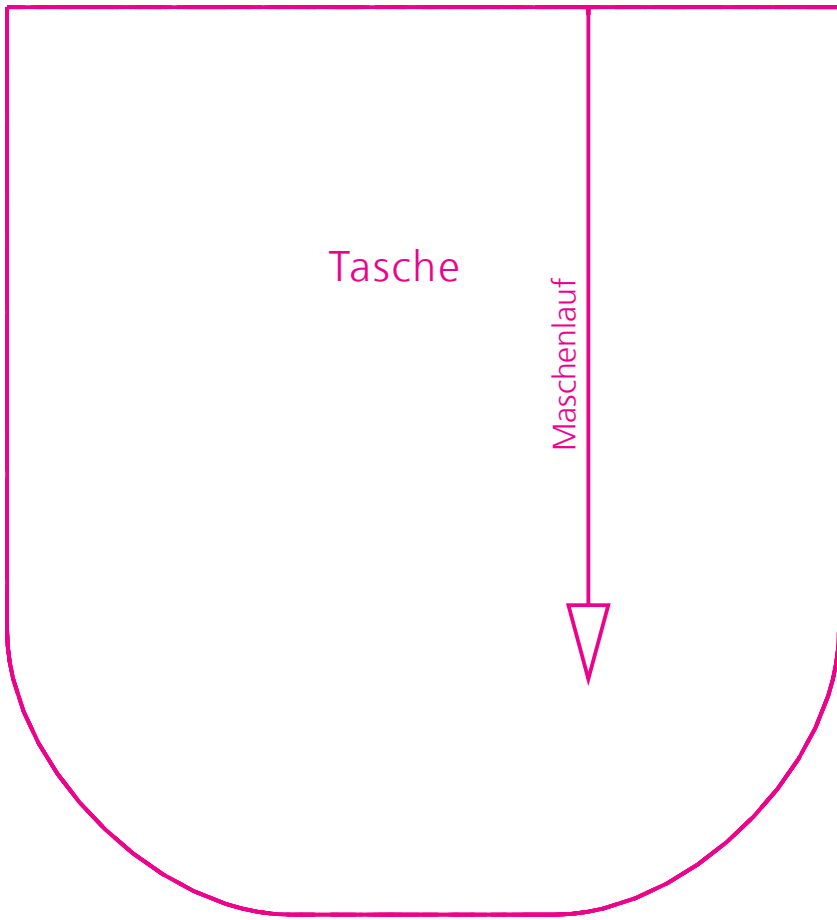
Hintere Mitte/Stoffbruch/Maschenlau



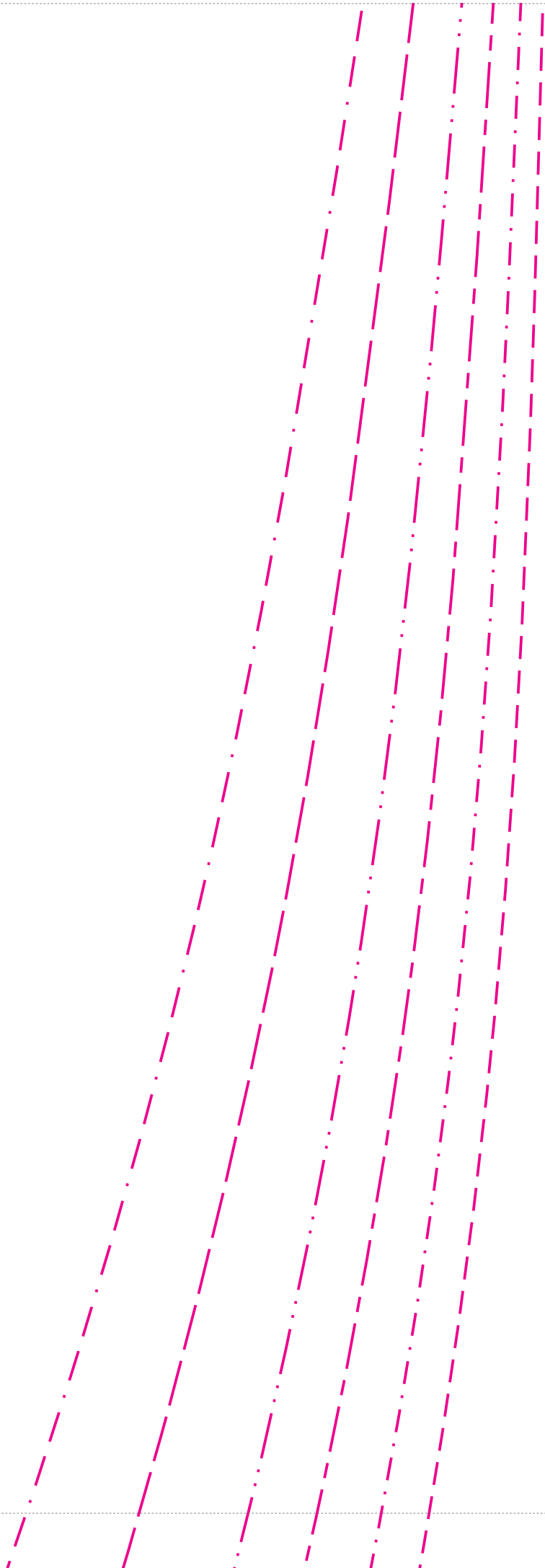


Eggshape-Kleid

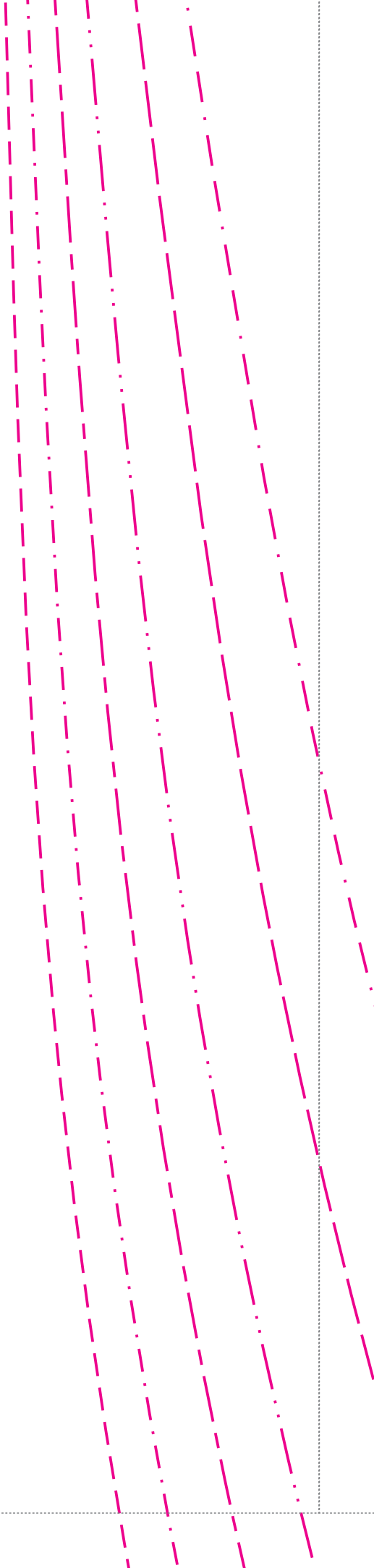
VORDERER UND
RÜCKWÄRTIGER ROCK



Vordere und hintere Mitte/Stoffbruch



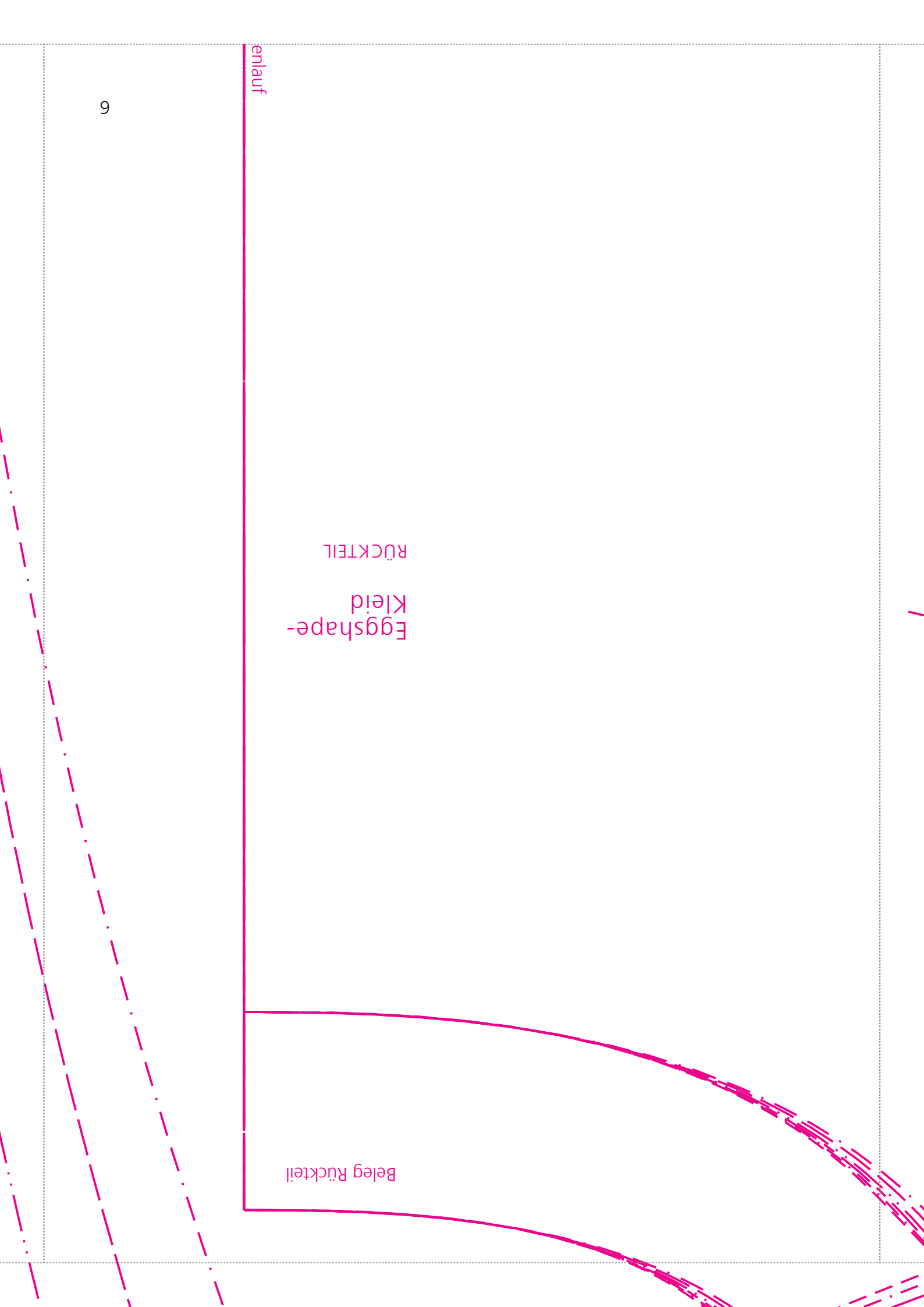
Maschenlauf

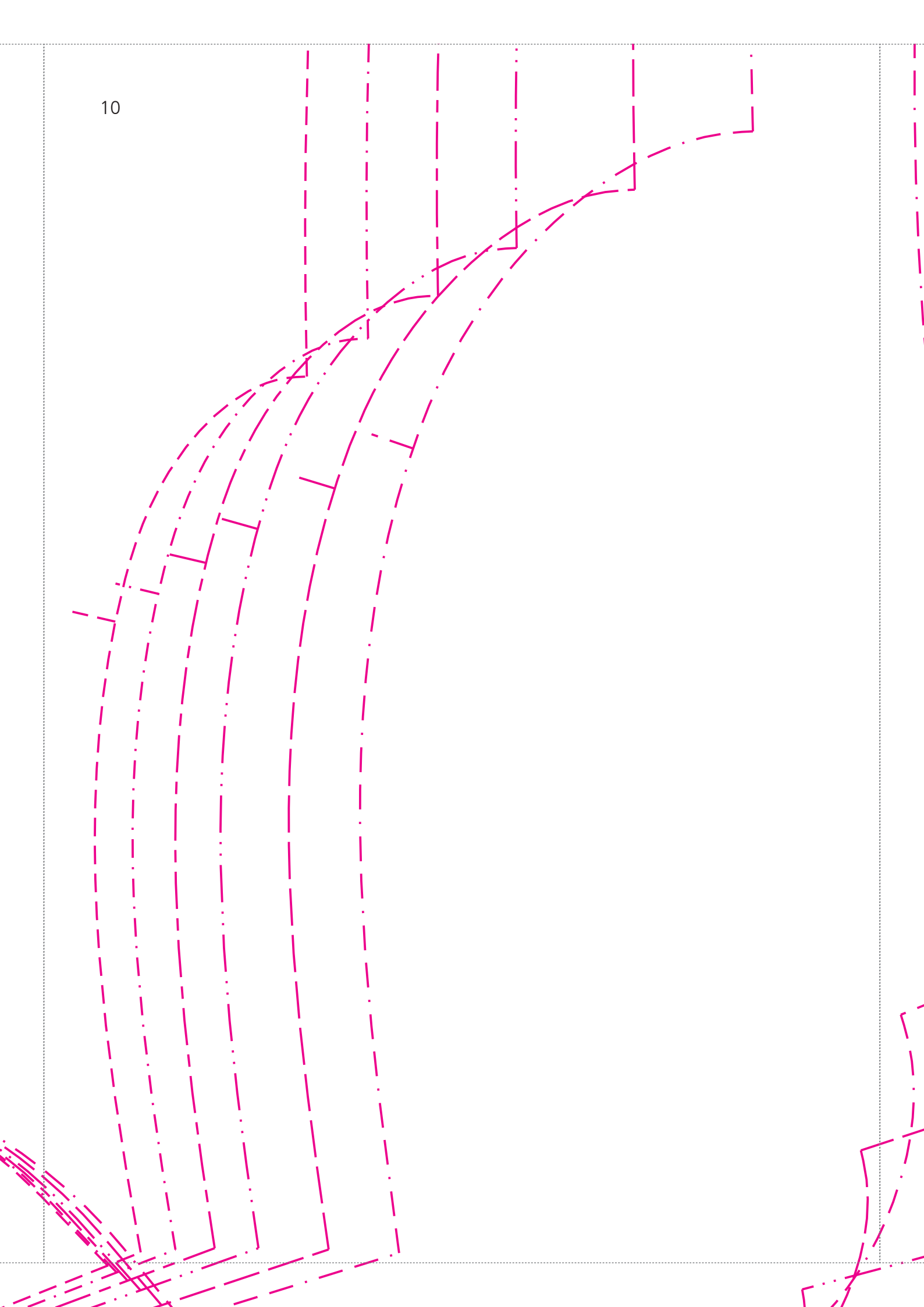


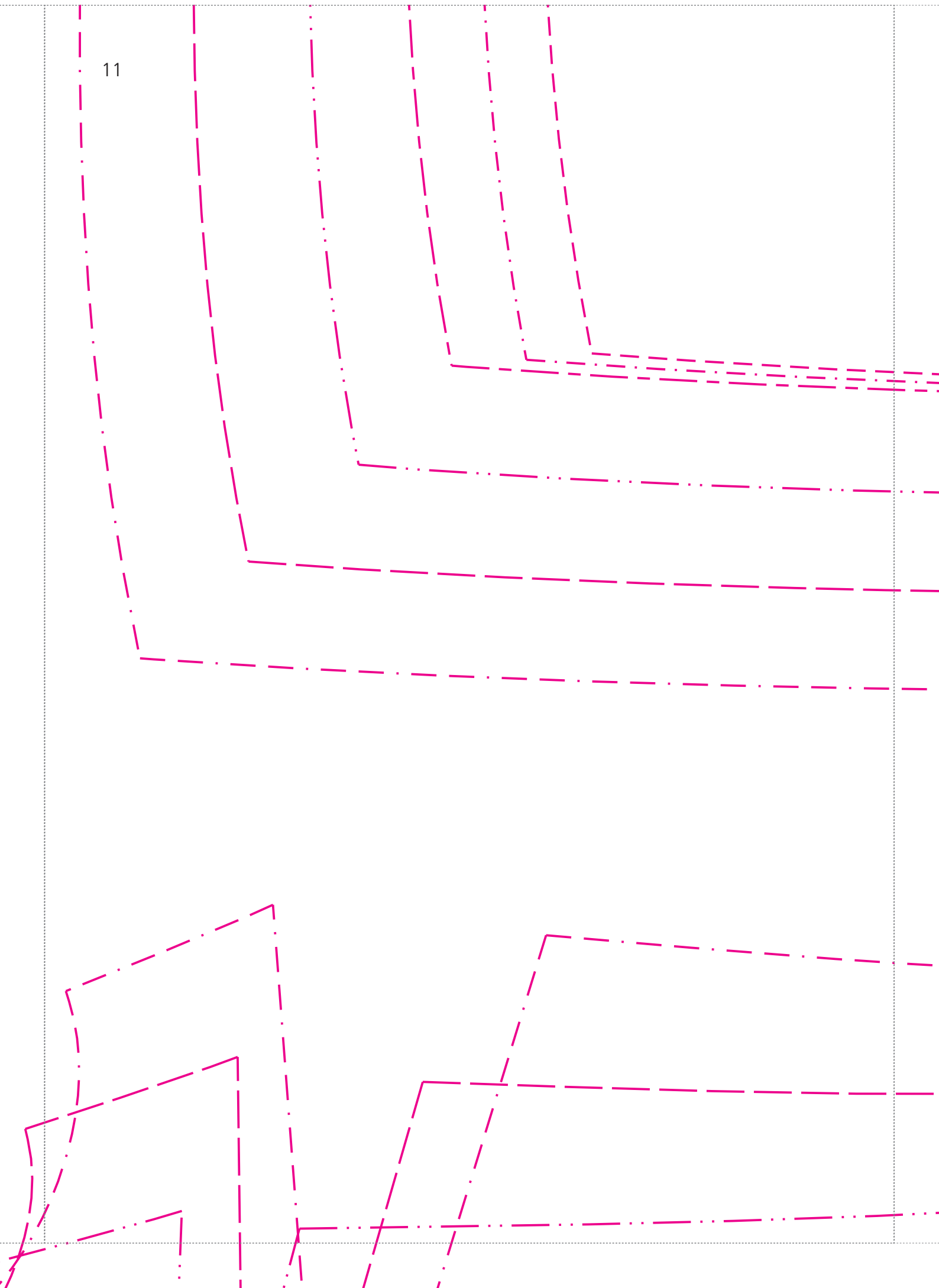
enlauf

Eggshape-
Kleid
RÜCKTEIL

Beleg Rückteil







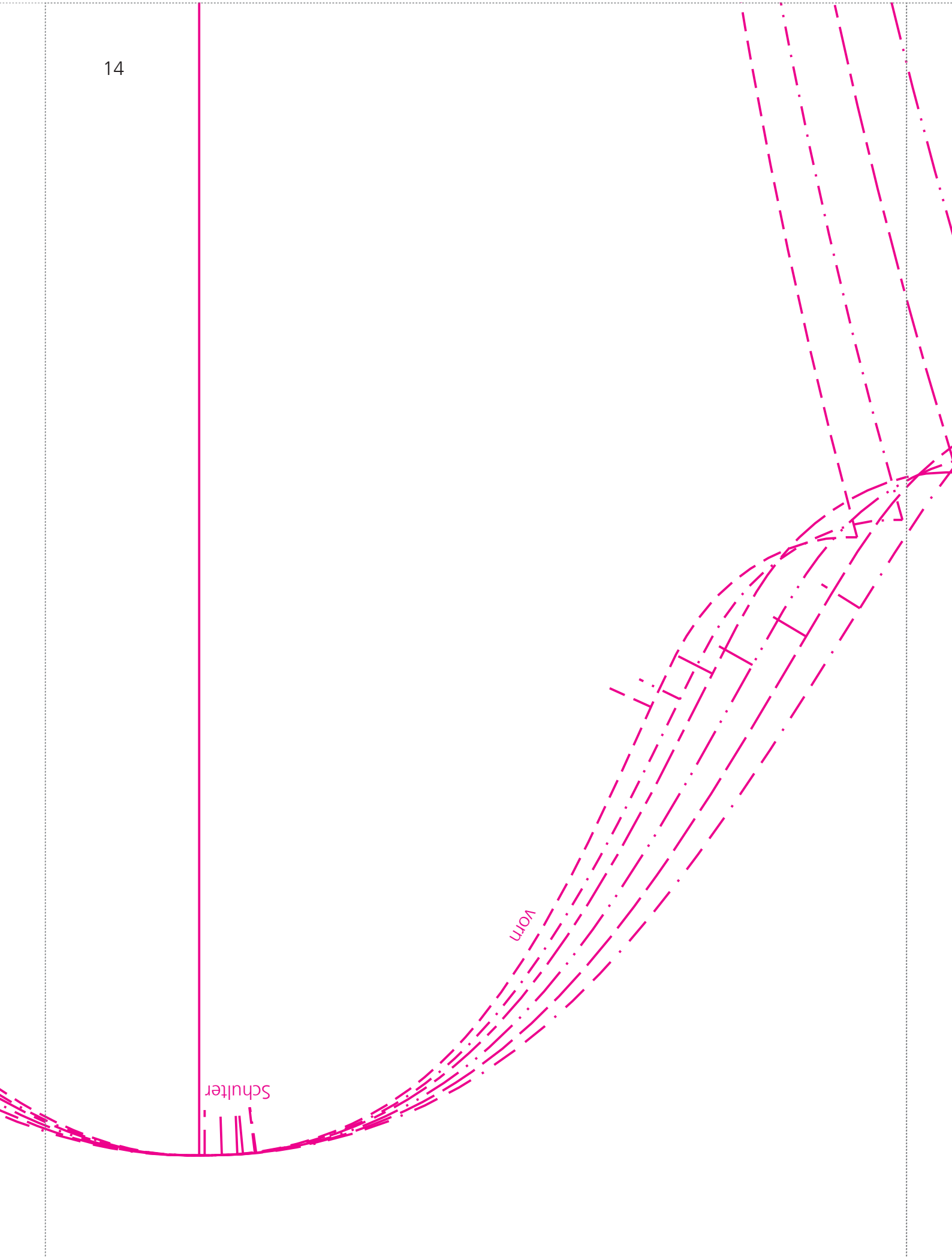


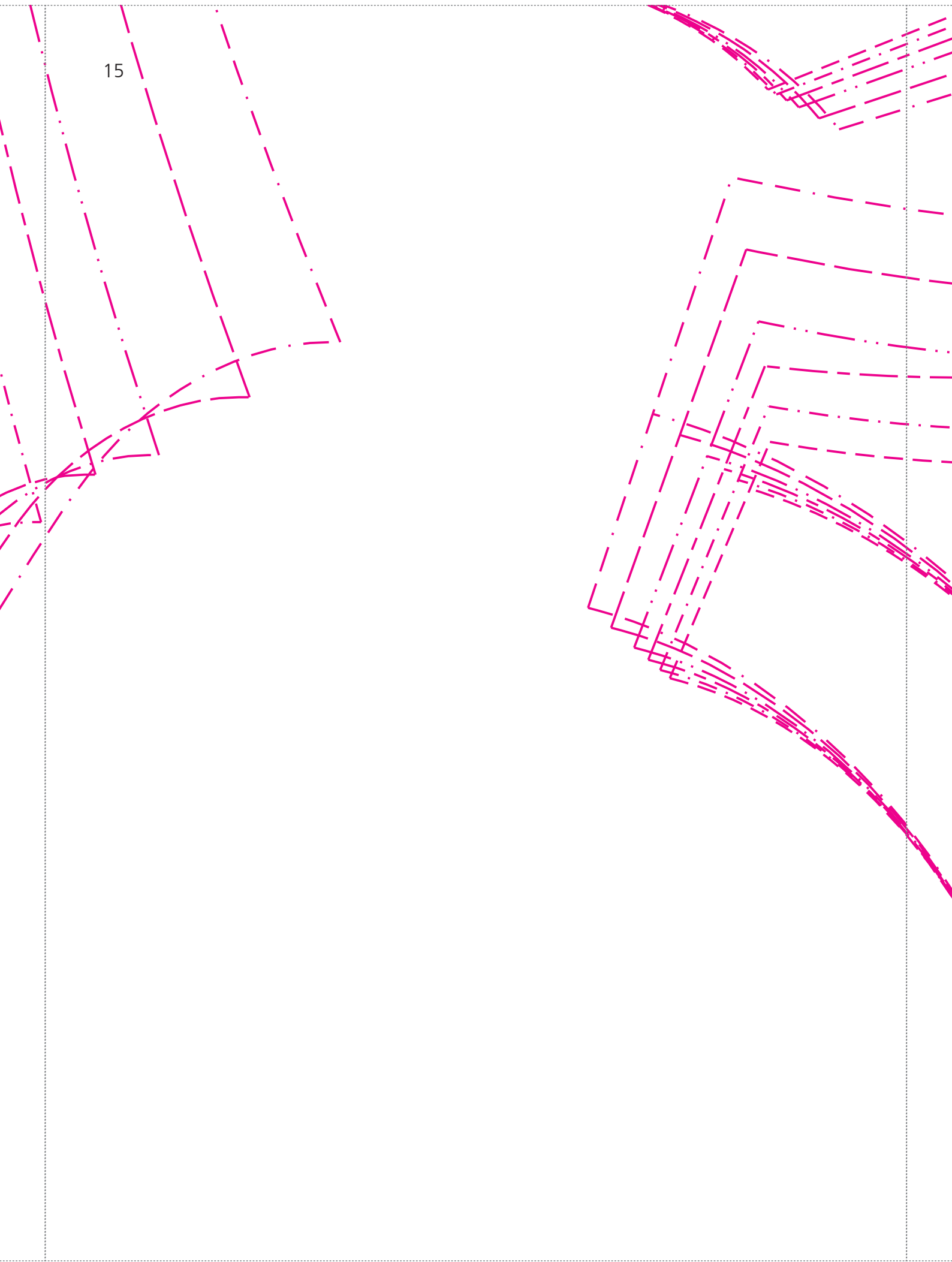
13

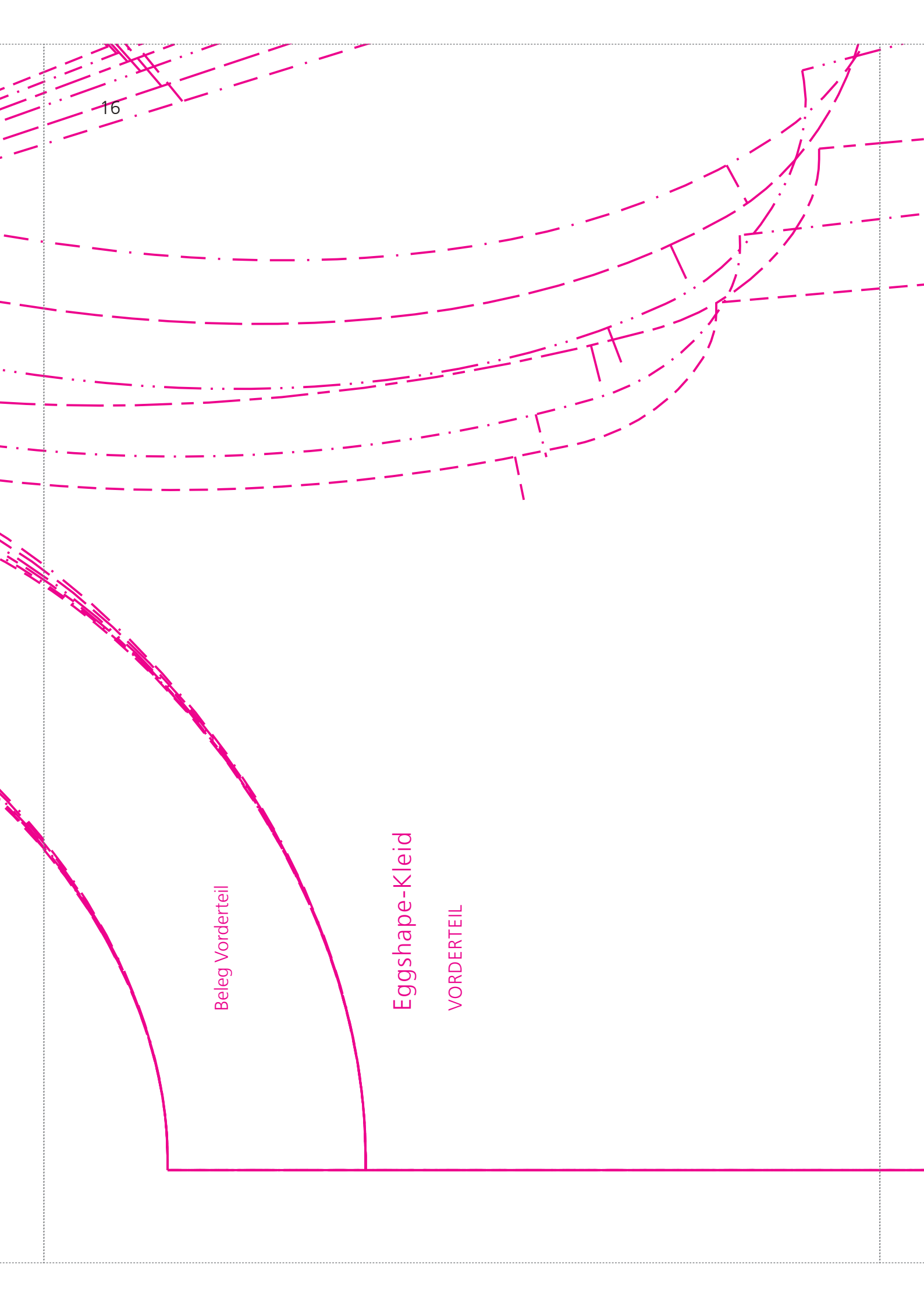


- XS ————
- S — · · · —
- M — — — —
- L — · · — · · —
- XL — — — —
- XXL — · — · — · —

hinten





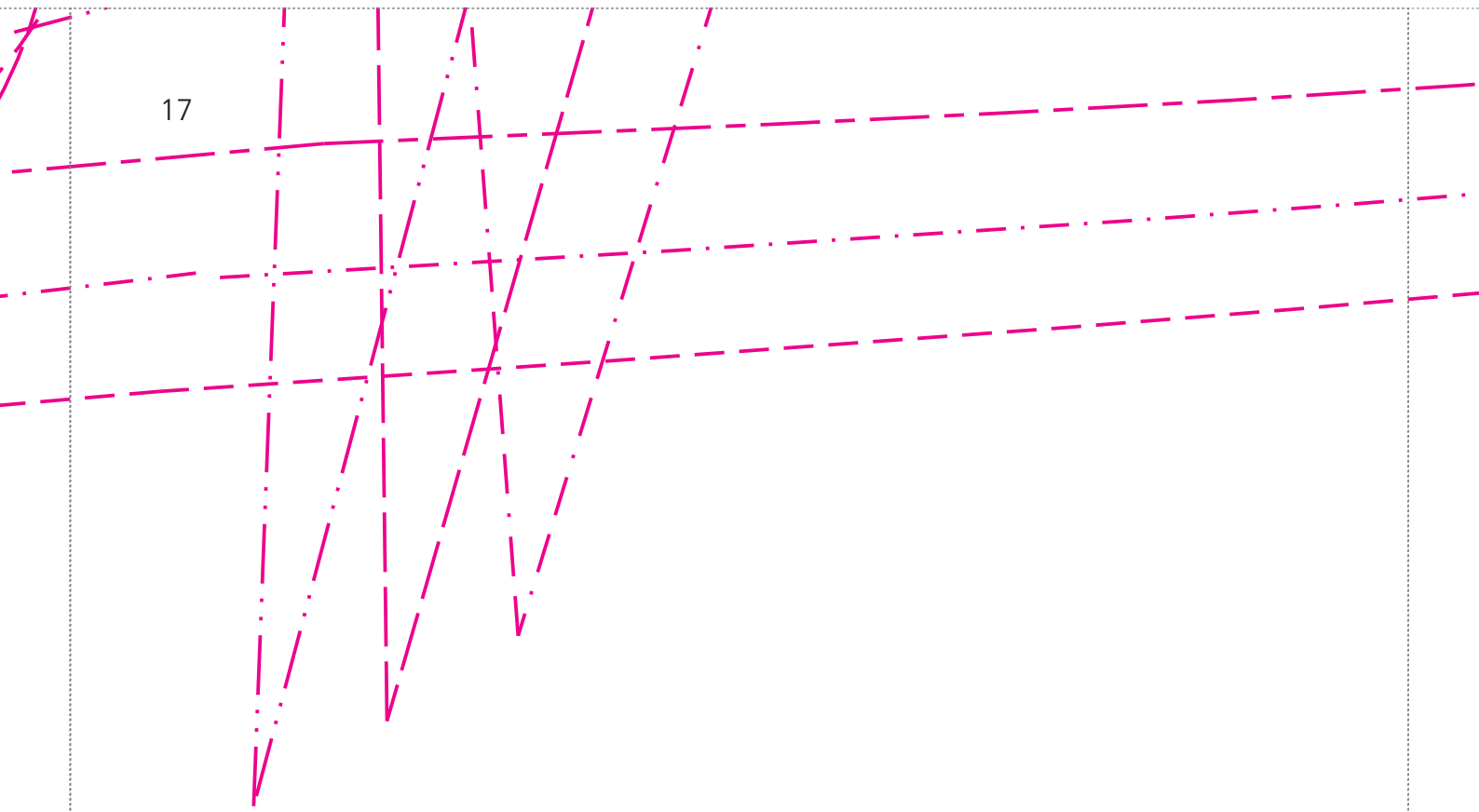


Beleg Vorderteil

Eggshape-Kleid

VORDERTEIL

17



Vordere Mitte/Stoffbruch/Maschenlauf

18

